

Picton Regional Forum held at Picton Emergency Centre, Memorial Park, Picton, on Monday 3 March 2025, at 1.30 pm

Present

Clr Barbara Faulls (Chairperson).

Group Representatives

Clr Ben Minehan (Marlborough District Council), Clr Raylene Innes (Marlborough District Council), Jodie Griffiths (Marlborough District Council), Raewyn Buchanan (Karakā Point & Environs Residents Association), Stuart Eyes (Waikawa Ratepayers Association), Marie-Jeanette van der Wal (Picton Combined Churches Chair), Don Miller (Greater Whatamango Bay Residents Association), Michelle Campbell (Grey Power), Ailsa Carey (Marlborough Community Vehicle Trust), Julie McFadden (Ngakuta Bay Community Association), Norm Hyde (Tirimoana & Anakiwa Resident's Association), Brian Henstock (Picton RSA), Brendan Carroll (Queen Charlotte College Principal), Di Beaumont (Tirimoana & Anakiwa Resident's Association), Chris Davies (Waikawa Ratepayers Association).

Guest Speakers

Eric Jorgensen (Sustainable Seas), Mark Lucas and Georgie Sullivan (Marlborough District Council Solid Waste), and Wayne Oldfield (Marlborough Roads).

Welcome

People were welcomed to the meeting by Clr Faulls.

1. Apologies

Clr Allanah Burgess (Marlborough District Council), Dean Heiford (Marlborough District Council), Steve Murrin (Waka Kotahi), Quentin Doig (Marlborough Community Vehicle Trust), Pip MacFarlane (Picton Dawn Chorus), Beryl Bowers (Picton Historical Society), Janette Howard (Greater Whatamango Bay Residents' Association), Deb Martis (Picton Happenings), Bosun Huntley (Marlborough Recreational Fishers Association), Laurie Stevenson (Marlborough Recreational Fishers Association), and Margaret McHugh (Picton, Marlborough Sounds Tourism Association).

It was moved that the apologies be accepted, and the motion was carried.

2. Confirmation of previous meeting minutes

The minutes of the meeting held on 18 November 2024 were confirmed as correct. Moved by Cllr Fauls and seconded by Raewyn Buchanan.

3. Waste Management Update (Mark Lucas and Georgie Sullivan, Marlborough District Council)

- Work has been done on a new draft Waste Management and Minimisation Bylaw 2025. Reasons for the new Bylaw are the last one was not fit for purpose. We are due to build more Remote Transfer Stations this year. They were not part of the previous Bylaw. It has been updated with these and with current legislation.

People are welcome to read the new Draft Bylaw on the Council website at the following location:

<https://www.marlborough.govt.nz/your-council/bylaws/waste-bylaw-2017/draft-waste-management-and-minimisation-bylaw-2025>

It comes out for community consultation on Monday 10 March and closes on 17 April.

We are seeking submissions on specific trigger values. At present we have copied what other districts have done around New Zealand. We want the community to tell Council where it sits. If we do what everyone else is doing, we can only expect to get the same results.

The reason for change is we have changed internally with how we deliver waste removal and disposal for the ratepayers. Also changes to the terms and conditions. Instead of having a Bylaw that means we have to consult with the community every time we want to change a couple of words, it means that specific council staff can go back to the Councillors and change them.

New recyclable products are coming out all the time, eg, tetra paks. People are looking for ways to recycle. We would have to reconsult, if we specifically listed everything in the Bylaw, every time a new product comes out. Using the terms and conditions Mark and Georgie can do that without having to do public consultation. It must still be approved. This will reduce waste expenditure.

Reasons for the Bylaw. Budgets. We have just started using Stage 9 of Blue Gums Landfill in Blenheim. That cost \$6 million to build. It has an expected lifespan of six years. Ratepayers pay for that.

Currently we annually pay \$60 per tonne in waste levy to the government. On 1 July that goes up to \$65 per tonne.

The New Zealand Emissions Trading Scheme Liability (ETSL). At all landfills in New Zealand the greenhouse gas they produce is recorded and we have to buy carbon credits to cover that. In the past the Council had banked a lot of carbon credits, so we surrendered them. It has been really good up to this point. This year we will run out of banked carbon credits in about July.

We bought the carbon credits in 2020 for \$31. Now they are sitting at \$64 each. We need to buy more.

ETS liability is estimated to go from \$820,000 to \$2.6 million annually, a cost which is passed on to ratepayers.

At present Marlborough is sitting at almost double the average waste produced per person per year compared to other regions.

Nationally, New Zealand produces 740 kgs of waste per person per year. In Marlborough we are sitting at 1330 kg per person per year. We are currently the fifth worst country in the world. We can't afford not to change.

Another reason for the change of Bylaw is that it gives us the ability to direct things in the way it is brought to landfill and also reject items that come. We can reject items outright and send people away to recycle them. So we can remove waste from the landfill.

The current landfill has 24 years left. At today's dollar value it will cost the ratepayers approximately \$50 million to build another landfill. If we stay at the average of 740 kg, the life expectancy would be 44 years; almost double what it is now.

Those figures are so people can understand what we are trying to do with the new Bylaw, which is to divert as much as we can from the landfill as it costs the community a lot of money.

If managed properly, we can divert increasing rates for landfill which will flow on to the community. It is important that the public gives Council feedback, so it is a district-wide response.

Questions/Answers

- Why is our volume so high compared to elsewhere?

A lot of contaminated soil is going in due to the Hazardous Activities or Industries List (HAIL) sites. We have a lot of industry, which has a lot of waste. Major industries in Marlborough are working hard in conjunction with Council to reduce their waste.

Mark Lucas likens it to generational thinking on what is socially unacceptable, ie, the change in drink driving and educating people to make changes.

There is a Statement of Proposal before the Bylaw which explains the reasons why and can be found here:

https://www.marlborough.govt.nz/repository/libraries/id:2ifzri1o01cxbymxkvwz/hierarchy/documents/your-council/trade-waste-bylaw-2025-consultation/DRAFT_Statement_of_Proposal-Trade_Waste_Bylaw_2025.pdf

- Would this be something relevant for Queen Charlotte College to report on at School Assemblies?

Yes. A feasibility report is being undertaken at present for organics. We are looking at an anaerobic digestion plant to deal with our organics here as well. That would strip all the methane-producing waste out of our landfill, potentially reducing the ETS liability.

- Don Miller stated he takes his own recycling to Picton Transfer Station as it's not getting picked up by the local contractors and it just goes to landfill. Signage at the transfer station on the recycling bins is very confusing, ie, Paper, No Cardboard. What is the definition of what is paper versus cardboard? Is it important?

Yes, it is. This is a big project Georgie is working on to re-brand signage and use internationally recognised symbols. We have a high number of tourists here, some of whom don't speak English. It is aimed to be improved on. Work is to be undertaken on the Picton Transfer Station to make it easier for everyone.

- Soft plastics were mentioned and what a problem they are. What can be recycled and what can constitute contamination? This is not advertised properly to the public.

There are issues with McCormick's Road at Whatamango Bay. There are issues with trees blocking access. The truck can't get down there so the small truck is sent down which just gets their waste each week. That is the only street in the district that that is happening at the moment. Every other street a

hundred percent of what is being collected is going through the sort line. This has changed since the new contract has come onboard.

Everything that can be scrunched can be recycled, including foil packets, like biscuit wrappers, chip packets.

Ngakuta Bay has a collection point for soft plastics which is then taken into Picton for Future Post to recycle.

The way we shop has changed. We need to go back to brown paper bags at supermarkets, instead of everything in plastic containers.

- Consumers can dictate how products are received. The winery industry used to get all their sugar in a 20 kg bag, wrapped in paper, with plastic wrapping inside. It was not feasible to recycle the plastic. The winery company put pressure on the supplier to change how things are produced. The product was changed to be put into a cubic metre fadges package. They can now be sent away and recycled. Collectively as a consumer we can do it.

- Do any of the contractors refuse to pick up bins that are not correctly filled, like they do in Christchurch?

Yes. They are left on the side of the road with a tag on to explain to the customer why it hasn't been collected. A photo is taken to record things, so Mark and his team have records of every bin that has been refused because of contamination or wrong presentation.

- Has any progress been made on a site for the new waste disposal transfer station at Anakiwa/Tirimoana/Grove?

No site is available at present. There is a road reserve down the road that could be a potential site for this. Council also wants to have something for trampers coming off the Te Araroa Trail to use and those coming out of Anakiwa, as well as for Outward Bound. Signage would be required for education for this and ideally also put on the Te Araroa Trail website.

- We need to go back to the source. We need to invite Hamish Watson, from Picton Business Association, to one of these meetings.
- Future Post has a really good poster that explains what can go in for soft plastic recycling.
- On Picton Foreshore there are lots of cardboard boxes and things that could be recycled. Is there any responsibility of the businesses to provide places? Or is it Council's responsibility? The bins are overflowing. It is not happening on cruise ship days, so is not a byproduct of them. It becomes very obvious. As we are becoming more educated is it a possibility to have something installed there?

Yes, hopefully with the Councillors' approval. We are getting complaints from people down the Sounds in their baches that they don't have access to recycling. The site on the Foreshore is not big enough for that set up. Mark is talking with Parks and Open Spaces about this and wants to design it around the Remote Transfer Station Site. A compound set up could be established with cameras on. It could be monitored. We would be able to remove any non-compliant items. A budget needs to be found for these.

We need to formalise the one in Waikawa and fix the one in Picton. A trial transfer station in Havelock is being undertaken in partnership with Port Marlborough.

On the Foreshore it needs to be far enough away from the water, for a buffer zone, so it doesn't blow recyclables back into the water, while also being close enough for people coming in on boats who don't have vehicles. That is challenging.

- What is the form of contamination of the 25,000 tonnes?

Milk bottles, yoghurt containers, butter containers, etc, and any organic material in containers which is not washed properly. It needs to be a washed, cleaned product.

- Council needs to come and deal with the Picton Transfer Station. Soft plastics need to be dealt with. Green Waste is a total embarrassment. Having to take it through to Blenheim is not good enough.

There is a Green Waste bin, which is last in the line of bins. The green bin waste cannot be contaminated. If you bring your trailer in with green waste, it is good practice to put a tarpaulin over top of the green waste and excess waste on top of that.

- Can we get some communications or media release distributed about this as it's happening all the time?

Mark realises there is a big need for education around all of this.

- Picton needs soft plastic recycling.

It will be rolled out with tetra pak recycling at all Transfer Stations; Picton, Havelock, Seddon, Wairau Valley and Rai Valley. Soft plastic is next on the list, and recycling of bottle caps will be installed eventually.

It was never included with the initial contract. It is a variation and an added cost. Some restrictions are in place due to government restrictions.

- Council is working with the Community Garden in Huia Street, in Picton, and bringing the green waste, once it has been mulched, back to Blenheim. In conjunction with Envirohub, some empty truck contractors returning to Picton from Blenheim, are going to the Community Garden, being loaded for free, and bringing the green waste back to Blenheim free of charge. There are controls on spray on green waste.

- Does some green garden waste have fertiliser issues?

Council is looking at ways to improve this as well. There are controls in place for the anaerobic garden waste products. Soldier flies and worms will be used to turn the liquid fertiliser into solid compost, therefore being viable for transport. Mark Lucas wants to make the organics collection cost neutral.

- Marie-Jeanette van der Wal thanked Mark for coming to speak to the group and inspiring them all. She has bought a Wholly Shrinker container to put all her soft plastics into to compact them. It has become a routine. We can make changes collectively, rather than individually.

Eric Jorgensen exited the meeting at 2.20 pm due to prior time constraints.

- Is recycling something school children can influence the community on?

Brendan Carroll mentioned that school lunch boxes are also being recycled. Children can become involved and be a driving force for their parents and neighbours. It is about having the ability to recycle locally and becoming a habit.

- Don Miller stated the driver of all this is Council being charged for emissions. Is washing with hot water going to be creating emissions?

Yes. It should be a common-sense approach to wash recyclables at the end of washing your dishes.

- Can the washing be done in the dishwasher?

Yes. It doesn't matter if the plastics become deformed.

- There is a lot of rubbish along the edge of Queen Charlotte Drive. Can a conversation be had about this along with Parks and Open Spaces and freedom camping? Can some signage be constructed about rubbish and keeping it in your car until reaching a proper transfer station or rubbish bin?

This is why Council wants to establish the Remote Transfer Stations (RTS), as they are free. They are to service the communities that don't have wheelie bins. Ratepayers are paying for them. The definition is domestic waste. If it can be put in a wheelie bin at home, it can be put into an RTS.

Hoping that now there is a site open 24/7 it can be utilised and not dumped.

- Are you looking at a proper green waste dumping?

Yes. Council has to come up with a solution to green waste before we can start collecting green waste. We need the infrastructure for it. Having domestic plants growing in the middle of native bush due to self-seeding is not great for the environment, so we need to improve things.

Funding is an issue to implement any programs.

- These are important issues for future generations; rubbish and footpaths. There are other Council things that could be deleted if funding is an issue.

People are encouraged to put these ideas into a private submission to Council if you want anything cut out.

We can effect change if people are enthusiastic about recycling. We need to change people's perceptions about recycling. We need to make it socially unacceptable throwing rubbish out of vehicle windows.

- Would it be good to have Mark Lucas speak to business groups?

Yes. He has spoken to winery groups. It has changed the whole mindset of people in that industry. The internal feedback from that has been great and it shifts people's thinking.

- Is there opportunity for Mark Lucas to meet with local groups, for example at the library, Picton RSA, etc?

Mark can make himself available to groups. Education is important.

- Councillor Faulls will send out links for Mark Lucas to connect with Brian Henstock of the Picton RSA, and the Picton Business Group.

- Mark Lucas distributed some Draft Waste Management and Minimisation Bylaw 2025 documents to the group.

Jodie Griffiths exited the meeting at 2.55 pm.

Chris Davies entered the meeting at 3.00 pm.

4. Marlborough Roads Update (Wayne Oldfield, Marlborough Roads)

- Wayne Oldfield spoke on the Marlborough Roads Recovery re Queen Charlotte Sound.
- IReX works and project improvements were briefly mentioned.
- Discussion has been had with landowners about land issues around roadworks and septic tanks.
- Kenepuru road works are progressing well with a completion target date of September 2025.
- The project team are working on consent requirements and landowner agreements for dump sites and easements.

Questions/Answers

- The ridge between the two sides, will that not have the ability to be cut back, on slide Retreat RP 4.8 Whatamango Bay?

It is recognised there will be log trucks on that road to include logging truck visibility for consumers. It could be 5-6 metres. Chorus, etc, will be included in the design.

The design process takes quite a while, months in the making. It has to be consented to works. It could be up to a year in the planning. Consents are being finalised with Waka Kotahi.

- Dublin Street is a mess after IReX. The new footpath on Auckland Street turns into Dublin Street, with signage, but is tricky if you are in a wheelchair. Can this be fixed for people with accessibility needs?

Wayne Oldfield will mention that and make plans for it.

Dublin Street was discussed. There is a plan for maintenance for Dublin Street. It is only right that the existing contractor fixes their works before any new work is implemented.

- The Elevation is fixed and performing as expected. It will continue to be monitored. The barrier is doing its job at present.
- Coming from Blenheim up the Elevation toward the top it is slumping. Could it continue slumping due to the springs there?

How we are dealing with the water now will dry the site. We recognise it is an important route coming into Picton for ferry customers. It will continue to be monitored.

- When you're in the Crow Tavern, once a week, a motorhome will be parked in the wrong direction. Because trucks are all parked up, the arrow signage is not visible. Why can't there be a sign in the pub itself?

In the short-term people are expected to obey the road rules.

- What is the situation between Blenheim and Nelson speed limits? Should Marlborough Roads be reducing the speed limits on Queen Charlotte Drive to improve safety, particularly for tourists?

Wayne Oldfield explained the ongoing consultation process for speed limit changes and the need for council approval. Some of the areas will reverse back to the original speeds. The Marlborough side is in consultation at present.

Chris Davies expressed frustration with the lack of progress on previous speed limit changes. Council is considering permanent speed limit changes to streamline enforcement.

- Are the Roads team planning ahead re two new ferries now?

No plans currently underway.

- Is there any consideration being given for a ring road around Blenheim with vehicles backing up currently between Picton and Blenheim?

No, there is nothing in any short-term plans for this. Any possible available land is occupied.

What we do know is that with the volumes beyond Riverlands, it drops down to 2,000 to 3,000 per day. It is a low volume of freight for a State Highway. It doesn't stack up economically. A portion of the ferry traffic does go to Nelson and uses the Inland Route.

Clr Minehan stated that surveys have been done on this previously. There is no budget from the government for this.

A member noted it should be included in future planning, to have it pencil marked as a bypass road, so other businesses cannot be built on the land.

Cost versus benefit is not enough.

Could a toll road be implemented to pay it off?

We don't know what the performance of any new ferries will be until we are informed.

- Di Beaumont queried the two properties that are red stickered near Anakiwa Road, one which is in negotiations with insurance still. If we have water going through it, it will go down onto the road. She wants clarity around school buses in relation to young children. Land that has separated is on private land and has a septic tank in front of it, if the septic tank comes down, who would be liable? Would liability fall with Council if they know about it?

The Council team should ensure that septic tanks are managed appropriately. Marlborough Roads have limited ability to go onto private land.

If we have another weather event and it does come down, it's a safety issue, she doesn't want grandchildren running around if things could come down.

Ms Beaumont has been asked to send photos through to Wayne Oldfield and they will follow up on it.

- The poor quality of recent road resealing work, particularly on Queen Charlotte Drive was discussed with cars crawling along at 10 km/hour due to tar and stones being flicked up. This is recent sealing in the last two or three weeks. If it's due to heat, why is it being done at this time of year?

It has a high degree of emulsion binder in there and time for the binder to grip the stones. It is better for the environment and safer for the team. It is performing as expected now. We need to keep sweeping it as well. There is always a degree of stone chips due to the nature of the curves. Wayne Oldfield acknowledged the issues and explained the use of emulsion binders, which may cause temporary stone loss.

- In Ngakuta Bay there is a 30 km sign put up at Christmas and has not been replaced by a 50 km sign. Would it be possible to replace it with a 40 km hour sign going into Ngakuta and 50 km going out?

From July this year it will be consulted on and the appropriateness of it will be looked into.

- There is nothing in writing for Anakiwa. They have tried to get it down to a more sensible level, due to Outward Bound School being there. Lady Cobham Road is a 100 km hour speed limit. Does the Tirimoana & Anakiwa Resident's Association have to write a submission to get this put at a better speed limit?

The original consultation document was presented to NZTA. Recommendations were put to local government / Council, were accepted and ratified, but since then we have had a change of government. It is up to us, as communities, to ratify the situation.

Opportunities will be coming for discussions around speed. After processing it through Council first, the community will be listened to.

You need to have a speed representing the nature or difficulty of the road.

- In Koromiko, there is a bypass to Freeths Road to the Freedom Camping bay. Should there be a pullover for people to turn left, for turning right when people are travelling at 100 km hour? Will the width be enough? Aisla Carey raised concerns about traffic management during road works, particularly for school buses and young children.
- Wayne Oldfield explained the Council's role in managing traffic and the importance of community feedback.

Wayne and locals will watch this space. A walk through will be done from a safety perspective. The engineers will be approached about this and ideas passed on.

- Brendan Carroll discussed the impact of logging trucks on school bus routes and the need for better traffic management.

Council is working on improving signage and traffic control measures to ensure safety. Marlborough District Council is also working on improving school bus schedules and ensuring safe transportation for students.

Brendan Carroll also mentioned the rebuilding of school facilities and the expansion of aquaculture and building academies.

5. Annual Plan Process Update (Councillor Barbara Faulls, Marlborough District Council)

- Cllr Faulls provided an update on the annual plan process, including the high number of submissions received. The process has changed this year to become more cohesive and to get ideas from ratepayers first. Council is considering submissions, including some interesting ones on goat and ungulate management and other local issues. The Sounds Restoration Trust are doing a good job eradicating not only wilding pines but also goats.
- Cllr Faulls acknowledged the issues with the online submission form and the lack of ability to comment on others' submissions. Council is working to address these issues and improve the process for future consultations.

Don Miller raised an issue about the format and templates of the online forms. It ended when the submissions date finished. His concerns will be passed on.

6. Actions from the previous meeting

	Action	Person Responsible
1.	Check if rates can be received as an itemised bill according to where they live. <i>Completed.</i>	Clr Barbara Faulls / Geoff Blake
2.	Distribute information about the Picton Happenings Survey to the group. <i>Completed.</i>	Kirsty Baldwin / Jodie Griffiths
3.	Distribute the Blue Cod Review Survey. <i>Completed.</i>	Kirsty Baldwin / Clr Barbara Faulls
4.	A question was raised about feeding power back into the grid and how that can be done on buildings in Marlborough. <i>Completed.</i>	John Boswell

7. General Business

- **Queen Charlotte College**
 - Administration areas have been re-built.
 - Aquaculture and the Building Academy are going from strength to strength.
 - The college are looking at viticulture and tourism to link into local employment opportunities.
 - The school role is presently 400.
 - There is a full bus coming in from Blenheim.
- **Greater Whatamango Bay Residents Association**
 - Toilets by High Street and trees are not good. This will be looked into.
- **Waikawa Ratepayers Association**
 - A lady fell on the Queen Charlotte Track recently and found it difficult to find accommodation. There are no after-hours numbers. Could there be a phone number contact about Destination Marlborough? After-hours information should be made available.

Council has a 24/7 answering service to direct people for help.

- **Grey Power**
 - Michelle Campbell acknowledged Tania Cowie for all the work she did for Picton Grey Power.
 - There are a number of people who go right due to poor signage, near Auckland Street and London Quay roundabout, on the way towards the Interislander Ferry Terminal. Could this get better signage?
 - We could benefit on a communication note for Picton tourism businesses to give to their customers.
 - The temporary Picton Terminal is not a good welcoming space for people coming into Picton.
- **Tirimoana Anakiwa Resident’s Association**
 - Freedom camping was discussed – and whether checks are being done.
 - Di Beaumont raised concerns about the ownership and management of moorings in local bays and queried whether there will be enough moorings for locals if people from out of the province are mostly buying the moorings. Will locals get first preference?

Clr Faulls explained the process for obtaining and managing moorings, including resource consent requirements. Issues were highlighted with moorings being transferred or used without proper authorization. Council is working on addressing these concerns and ensuring compliance with local regulations.

 - Clr Innes will follow up on this.

Michelle Campbell exited the meeting at 4.00 pm.

Stuart Eyes exited the meeting at 4.05 pm.

Brendan Carroll exited the meeting at 4.05 pm.

8. Actions from the meeting

	Action	Person Responsible
1.	Distribute a Statement of Proposal about the draft Waste Bylaw. <i>Completed.</i>	Mark Lucas / Kirsty Baldwin
2.	Councillor Faulls will send out some links for Mark Lucas to connect with the Picton RSA, and the Picton Business Group. <i>Pending.</i>	Clr Barbara Faulls
3.	Continue monitoring the Elevation works into Picton, with regards to ongoing slumping. <i>Pending.</i>	Clr Barbara Faulls
4.	Provide updates on the consultation process for the speed limit changes between Blenheim and Nelson. <i>Pending.</i>	Clr Barbara Faulls
5.	Follow up on feedback on the pedestrian crossing issues on Auckland Street. <i>Pending.</i>	Clr Barbara Faulls / Stuart Eyes
6.	Re-send Blue Cod survey to member Norm Hyde. <i>Completed.</i>	Kirsty Baldwin

	Action	Person Responsible
7.	Moorings query and clarity requested. <i>Pending.</i>	Clr Raylene Innes
8.	Di Beaumont has been asked to send photos through to Wayne Oldfield about Anakiwa Road and they will have a look at it. <i>Pending.</i>	Di Beaumont / Wayne Oldfield
9.	Could there be an after-hours phone number contact list for Destination Marlborough. <i>Pending.</i>	Clr Barbara Faulls / Council Customer Service Team

9. Proposed Future Speakers

- Picton Air Quality Management Update (Dr Sarah Pearson, MDC).
- Roading Update (Charlotte Campbell-Lamerton, Marlborough Roads).
- Picton Sewerage Update (Stephen Rooney, MDC).
- Marlborough Conservation Trust Update (James Wilson, Bryn Evans, Picton Dawn Chorus).
- Northwest Waikawa Marina Update (Gavin Beattie, Port Marlborough).
- Arapawa Island Paua (Mike and Antonia Radon, Arapawa Sea Farms Ltd).
- Ngati Kuia Nursery / Te Hoiere Project (Pelorus).
- Marlborough Sounds Blue Cod Review Update (Oliver Wade, MDC and/or Ministry for Primary Industries).
- Marlborough Sounds Fishing Update (Eric Jorgensen, Sustainable Seas).
- Picton Happenings Update (Debra Martis, Picton Happenings).
- King Salmon Update (Representative, New Zealand King Salmon).
- Port Marlborough Pending Projects Update (Representative, Port Marlborough).
- Greg Billington (Private Individual, Sculpture and Art Trail in Waitohi/Picton).

10. Proposed Meeting Dates for 2025

Picton Regional Forum

- 5 May 2025
- 7 July 2025
- 1 September 2025
- 10 November 2025

The meeting closed at 4.07 pm.

Appendix A – Marlborough Roads Update

Marlborough Roads



Roading Update

Picton Forum
3 March 2025

Slide Index

Slide #	Commentary	Commentary
2	Recovery Programme Target Dates	
3	Kenepuru- Programme Zones	
4	Kenepuru – Phase 3 Complex Sites -Schedule	Kenepuru & Complex D&C Target Dates
5	Retreat RP 4.8 Whatamango Bay	
6	Retreat RP 5.0 Whatamango Bay	
7	Picton Port Upgrade	

Current Recovery Programme and Key Target Dates

ZONE/ACTIVITY	TARGET COMPLETION DATE*
Queen Charlotte Drive - Construction Complete	December 2025
French Pass – Construction Complete	June 2026
Picton/Port Underwood – Construction Complete	September 2025
Kenepuru Complex Construction Complete	December 2027
Phase 2 Construction Complete	July 2025
Design Complete	September 2025
Landowner agreements	Inline with overall programme

*Current programme dates as at 3 February 2025.

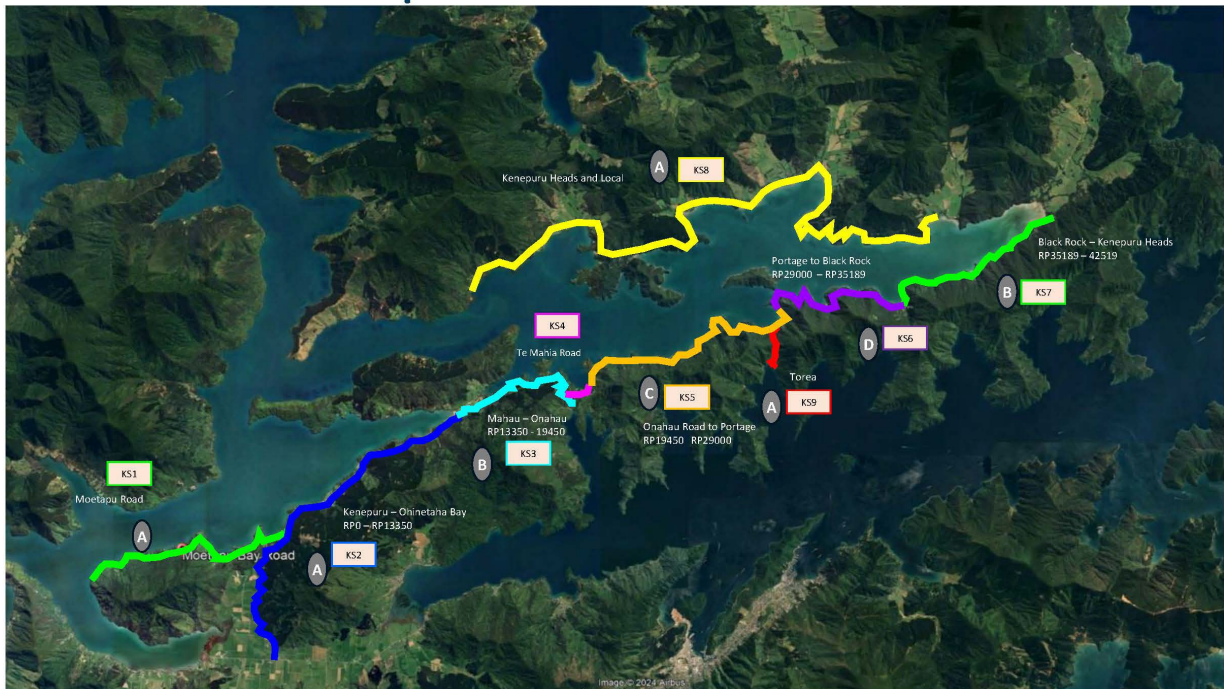
Dates will be further refined when detailed designs are completed allowing scope of works to be fully defined.

This in turn will then allow the construction durations of the various projects within the overall Programme of Works to be confirmed and tied down.

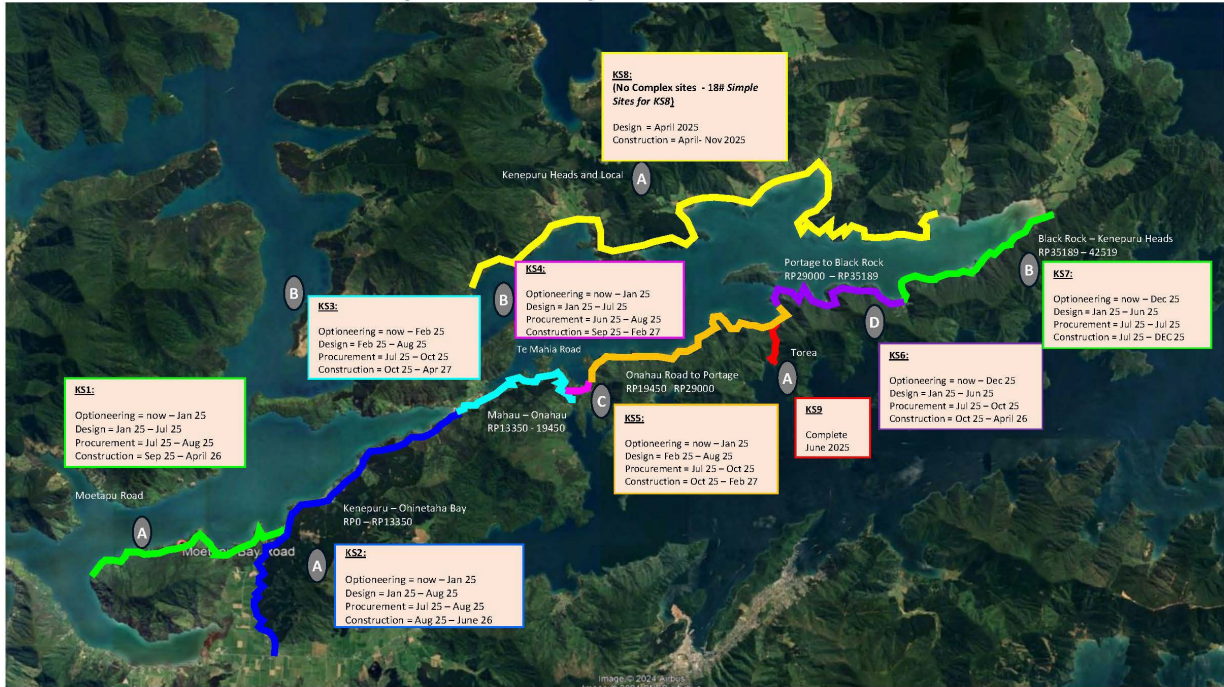
Marlborough Roads



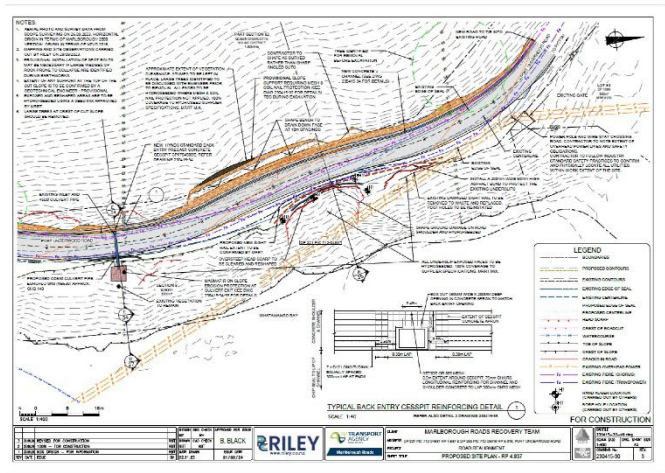
MRRT PHASE 3 – Kenepuru Overall



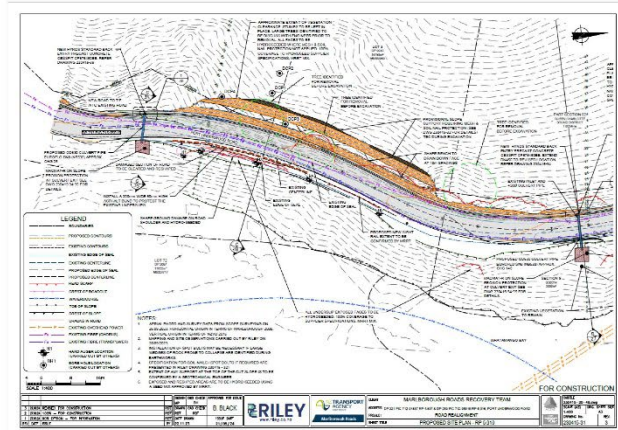
MRRT PHASE 3 – Kenepuru Complex



Retreat RP 4.8 Whatamango Bay



Retreat RP 5.0 Whatamango Bay



Marlborough Roads



Picton Port Upgrade

- State Highway revocation project is underway.
- This includes intersection improvements along Kent Street and Auckland St
- Public consultation to start around Easter
- SH 1 Elevation. Works complete but will monitor.

Marlborough Roads

