

Canvastown streetscape upgrade

An extensive revamp has reinvigorated the gateway to Canvastown.

The area outside the iconic Pelorus Tavern on SH6 has been upgraded with improvements including new paving.

The Village Green project has also enhanced access to the historic Miner's Hut with grassed areas, pathways and revised traffic layouts.

This all means ongoing positive effects for locals and visitors Canvastown Community Chairman Alan Rees said.

"It makes us feel good to welcome visitors into our slice of paradise with a revitalised look that is our Canvastown village."

Street lighting, better parking, mobility access and outdoor seating have all been installed.

There is also an improved link to the stormwater system and a speed reduction in the area.

These were all carried out in line with objectives identified by Council's Small Townships Programme's planning process which began in 2017 Marlborough Sounds Ward Councillor Barbara Fauls said.

"I am delighted to see that after many years of the community asking for improvements to their village hub, we have been able to do these," she said. "It's improved the safety aspect and also enlivened the space while retaining the rural authenticity of the area."

Canvastown has a rich gold-mining history which began in 1864 when the precious metal was discovered in the Whakamarino/Wakamarina Valley. More than 6,000 prospectors helped form a thriving community.



The revamped area outside Canvastown's iconic Pelorus Tavern

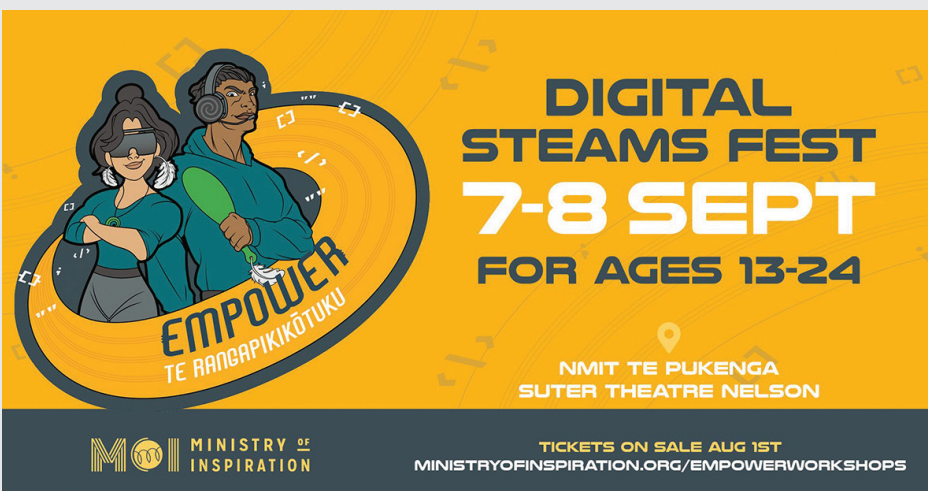
Marlborough youth invited to EMPOWER Festival

Marlborough youth are invited to attend Te Rangapikikōtuku/Empower Festival, which is to be held in Nelson on September 7 and 8.

The festival is aimed at young people aged 13 to 24 and is an opportunity to connect with tech innovators, explore career opportunities and unleash their creativity in a supportive and inclusive environment.

It will feature hands-on workshops, Battle Bots and an e-sports tournament, with various events held at NMIT and The Suter Theatre.

See the Facebook event for full details and a link to the ticket portal:
www.facebook.com/events/395050839818071/?mibextid=9I3rBW



Workshops foster connection with culture

Students from Bohally Intermediate and Richmond View Schools will soon be published writers following a series of workshops with language mentors.

The initiative, organised by REAP Marlborough and Welcoming Communities Marlborough, was designed for students from non-English speaking backgrounds. It gave them the chance to create their own piece of writing and have it published in a book alongside those of their peers. It was also an opportunity to connect with and share their culture and language.

The students were guided by language mentors to write in both their first language, as well as English. The finished pieces will be collated and turned into the My Voice, My Culture book, to be launched at the end of September.

A personal copy of each book will be presented to each student and language mentor at a special multicultural school assembly just after Welcoming Week 2024, which runs from 6 - 15 September.



Matilde Tayawa Figuracion and Jarenne Cabiling work together to create a piece of writing for a new book, My Voice, My Culture.

Catchment care and erosion planting

At risk areas in Marlborough are benefitting from plantings through Council's Catchment Care and Hill Country Erosion programmes.

This year more than 17,000 plants were established covering nearly four hectares of wetland or riparian areas.

More than three kilometres of fencing has been completed with support from the Catchment Care programme which began in 2020 and works with Marlborough communities to invest in protecting and enhancing catchments that are degraded or at risk of degradation.

Key objectives are to protect and improve water quality, reduce erosion and sediment and protect sensitive catchments.

Programme advisor Rosanne Homewood said Council had exceeded the target for the project regarding plants established and areas planted and was on target for fencing.

"A big challenge this summer was the drought which delayed fencing and planting and meant some landowners couldn't do work due to increased financial constraints or adverse conditions," she said. "This year saw a 100 per cent increase in landowners involved in fencing or planting projects compared to last year."

Having new landowners engage had been a highlight of the programme she said.

Working alongside the Catchment Care project is advisor Jenny Buck who leads the Hill Country Erosion Programme. She



New plantings on the banks of Lake Elterwater

works alongside landowners providing advice and funding for eroding or erosion prone hill country properties.

Some landowners choose to fence off badly eroded areas, retiring it from grazing and establishing native vegetation on their properties.

"I have spoken to several landowners who have committed to retiring non-productive areas," she said. "They get a real kick out of watching the native plants grow and then love the bird life that returns."

For the 2023/24 season, 2,917 poplar and willow poles were planted and 19 hectares of exotic woodlots established.

Native reversion plantings totalled 20,157 hectares.

For more information on the Catchment Care programme, go to www.marlborough.govt.nz/environment/catchment-care

Opening Hours

Mon to Fri: 8.30 am - 4.30 pm
Closed Wed 12.30 pm - 1.30 pm
03 520 7400 | mhc@marlborough.govt.nz

15 Seymour Street, Blenheim 7201, New Zealand
PO Box 443, Blenheim 7240, New Zealand

For careers at Council go to:
www.marlborough.govt.nz/your-council/careers



marlborough.govt.nz