



# 358 submissions received on Long Term Plan

Public submissions to Council's Long Term Plan 2024-2034 closed on 13 May. Three hundred and fifty eight were received in total.

Of the submissions, 166 were related to the Marlborough Sounds roading funding options for repair and reinstatement, the largest category of submission. The rest cover a variety of items including community facilities, general roading, flood protection and infrastructure planning.

Hearings will be held from 10 to 21 June with 103 submitters requesting to speak. The mayor and councillors will consider all submissions on Monday 24 June.

The Marlborough Regional Land Transport Plan 2024-

2027 also closed for public submissions on 13 May. Eleven submissions were received.

Mayor Nadine Taylor warmly thanked all submitters.

"It's great to see such strong interest in the future of Marlborough - thank you to everyone who has taken the time to have their say. It's now over to councillors and myself to consider everyone's feedback, suggestions and ideas. I look forward to the public hearings and also some robust discussions with councillors before we decide on our final recommendations."

## Rolling out Marlborough's revamped remote transfer stations

Marlborough's first remote transfer stations (RTS) are about to be built as part of improvements to the way Council manages waste and recycling.

Council will provide Marlborough's rural communities with 10 revamped remote transfer stations to improve facilities and replace existing coin operated skips and community recycling bins, under a new contract with WM New Zealand (formerly Waste Management).

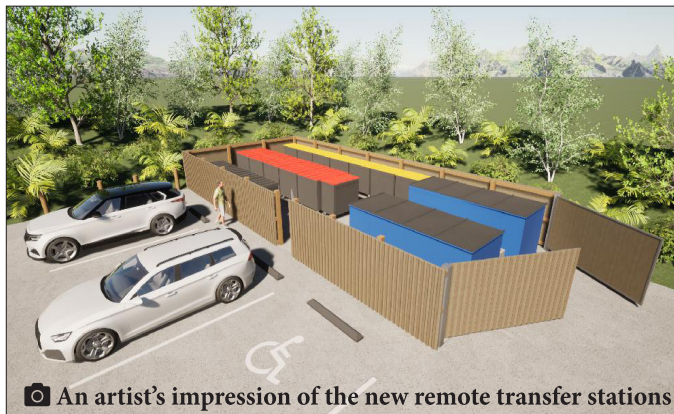
The sites are Awatere Valley Road, Ohingaroa Quarry, Port Underwood, Portage Bay, Rai Valley, Linkwater, Titirangi, Waihopai Valley, Waitaria Bay and Ward.

Council hopes to have all the sites operational by Christmas, Solid Waste Manager Mark Lucas said. "Council will remove all coin operated skips by 30 June 2024 and provide a 'stand in' transfer station until the new RTS are built, serviced by Council's contractor."

Mr Lucas said the new sites had been designed with an emphasis on aesthetics, practicality, ability to contain the waste and ease of keeping clean. The

design includes several recyclable products, including repurposed vineyard posts and mussel ropes. All the sites have been designed so people with reduced mobility will be able to use them and they will have 24/7 CCTV surveillance.

"The new remote transfer stations will include larger wheelie bins for all recycling and waste. People will be required to sort their recycling and waste into the appropriate bins and all glass will be placed in a large skip and sorted by colour," Mr Lucas said. "Current rural community recycling bins will be replaced by a combination of the expanded kerbside service and the remote transfer stations. This includes the current bins in the Awatere Valley



An artist's impression of the new remote transfer stations

and Ward."

Following community consultation and the letting of a contract to WM New Zealand, Council approved changes to Marlborough's waste services including expanding and changing the kerbside collection, including the introduction of wheelie bins, and installing the 10 remote transfer stations.

Wheelie bins are being rolled out now across the region to Blenheim, Picton, Grovetown, Havelock, Rarangi, Rai Valley, Renwick, Seddon, Spring Creek and Tua Marina.



Autumn brings falling leaves which can be used for compost

## Dealing with autumn leaves

Cooler weather is here and leaves have started to change colour and drop.

Council's Parks and Open Spaces team deals with leaves in our parks and reserves, collecting them where possible and using for compost. Leaves on roads are dealt with by Marlborough Roads.

Leaves can be collected and spread on your garden as a weed suppressant and mulch or added to the compost heap. Mowing leaves helps them break down faster.

If you see blocked drains or leaf build up you can report it to Council through the Antenno app. Antenno is Council's free mobile app and a great way to keep up to date with important Council alerts.

Free to install it is available on Apple and Android smartphones and no personal information or login details are required. Antenno updates link to information on Council's website.

For more information visit:

[www.marlborough.govt.nz/services/apps](http://www.marlborough.govt.nz/services/apps)

## Library card competition launched to replace rocket



Marlborough Libraries are looking for a new design for the Children's Membership Card which currently features a rocket ship.

A competition to design the next children's library card has now been launched and is open to all primary and intermediate children aged five to 13 years.

"After more than 10 years, it's time for our beloved rocket to blast off on a new adventure and that means we need a new design for our children's membership card," Libraries Manager Glenn Webster

said. "Who better to help us create a new design than the children who will use it. We are excited to see what our rangatahi come up with."

Completed entries must be received by Marlborough Library (Blenheim) or Picton Library by 5pm on Tuesday 4 June. Designs can be created as an art project in class but a parent/guardian needs to complete the consent form

for the entry to be valid. The judges will include a representative from Council, Marlborough Libraries and the Marlborough Art Gallery.

Entry forms are available at both Marlborough Library at Te Kahu o Waipuna and Picton Library and Service Centre or download here: <https://www.marlboroughlibraries.govt.nz>