



**MARLBOROUGH  
DISTRICT COUNCIL**



Rose Manor street trees in full bloom

**Information Update  
Assets & Services, Property and Community Facilities  
Department  
1 October 2024**

# Contents

<b>Marlborough Roads .....</b>	<b>1</b>
Local Road Asset Management Report – August / September .....	1
NOC Monthly Activities (June Report) .....	2
Operations Report (May Report).....	2
Marlborough Road Activities .....	3
Stakeholder and Communications (June Report).....	4
Road Safety (August-September Report).....	5
<b>Marlborough Roads Recovery Team Update – August 2024 .....</b>	<b>6</b>
Environmental .....	7
Construction Summary.....	8
Programme .....	9
Communications & Engagement .....	10
Progress Photos .....	10
<b>Rivers and Drainage Section – Activity Report.....</b>	<b>12</b>
Wairau River .....	12
Wairau Floodplain and Tributaries .....	15
Drainages.....	17
Picton, Sounds and Awatere.....	17
Investigation and Miscellaneous .....	17
Quarries .....	20
<b>Waste Management and Minimisation – Activity Report.....</b>	<b>21</b>
Waste Management and Minimisation Services Contract # 2021-077 (Contractor – WM New Zealand)....	21
Blue Gums Landfill – Contract # 21-039 (Contractor – Roding and Asphalt).....	22
Reuse Centre - Contract # 21-159 (Contractor – JBL Environmental).....	23
General.....	24
<b>Services and Operations .....</b>	<b>25</b>
Education Report – September 2024.....	25
<b>Parks and Open Spaces Activity Report .....</b>	<b>29</b>
Blenheim Parks .....	29
Renwick Parks .....	33
Awatere and Flaxbourne Parks.....	33
Picton Parks .....	34
Northern Marlborough/Sounds.....	37
District Public Conveniences .....	39
District Cemeteries.....	40
District Memorials.....	41
Walking and cycling .....	41
Trees .....	42
Playgrounds .....	43

Policy and planning .....	44
Road Safety Coordinator Update.....	45

# Local Road Asset Management Report – August / September

(Information prepared by Steve Murrin)

R800-007-02

## General

Funding decisions on the 2024-27 NLTP were released by NZTA in early September. Funding levels are below what was requested by Council. This will mean some adjustments to our proposed programme of works to stay within budgets.

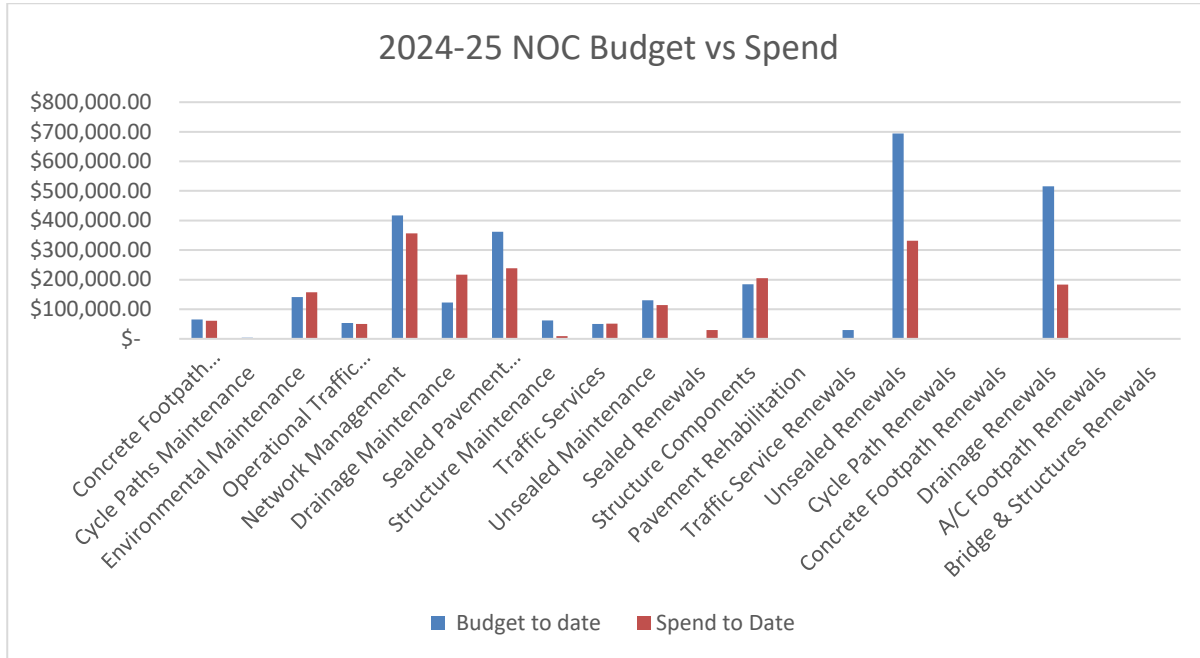
The NOC team are focused on preparing for a big summer of reseals and pavement renewals. Moving out of winter it is great to see the big effort gone in by the NOC on the unsealed network. Graders are working across the district and a big programme of maintenance metalling is underway. Very pleasing to receive some compliments for this work.

## Financial Commentary

Budgets for the Network Outcome Contract are still to be confirmed following NZTA’s funding advice and the Rooding Budget paper presented at this month’s Assets and Services Committee Meeting.

Below shows the tracking of indicative budgets across each subsidised category.

Once budgets are confirmed, catch ups on the Unsealed and Drainage Renewal budgets will be programmed.



Programme achievement in August was 67.2% - 135 of 201 jobs completed plus an additional 927 reactive jobs.



# **NOC Monthly Activities (June Report)**

## **Summary from Contract Manager, Grant Bennett**

Renewals remain the focus point with the pre-reseal repairs ready to go and a programme completion for most repairs by the end of October. A few stragglers are to be completed at the beginning of November.

We have had another positive month for pothole response, with low numbers on the highways. The cyclic crews are adapting well to the pothole response initiative with low numbers of potholes being find and fix, with little to no pothole complaints from outside sources. The reporting and daily meetings continue. A good stock of various patches is in stock to target areas of risk. We have also been approached by a couple of different suppliers and will be looking to undertake some trials.

Team culture is a work in progress with high workflows, key staff departures, and agreed programmes and budget delays all increasing pressure on the team. New team members are working well within the team and are making a positive change.

Winter maintenance has been managed well and the response to date has been at effective times, ensuring road user safety. Although the calendar winter season has finished, we will continue to monitor for the odd cold snap.

The unsealed network team are in full swing with maintenance metalling. We continue to receive compliments on the unsealed network. Programmes of grading and metalling of the unsealed road is being generally delivered within a week of the programmed maintenance.

Drainage renewals is well underway with a good programme ahead. The high lip and surface water channel teams are going well with their work, and it is good to see the outstanding work around the network.

# **Operations Report (May Report)**

## **Summary from Operations Manager**

Pre-seal repairs were undertaken on local roads across the network including edge breaks, unlined water channels and high shoulders. AC levelling and edge breaks were also undertaken on SH6 Rai Valley in August.

Resources in the drainage team focused on high shoulders and unlined water channels in August. This month they completed works on Queen Charlotte Drive along with Watsons, Cape Campbell, and Long Valley roads.

A large amount of grading and metalling continues to be undertaken. This month metalling focused on Northbank and Taylor Pass roads, and the grader working in the Northbank/Pelorus regions.

The Fuschsia Bridge Renewal was undertaken this month along with routine maintenance bridge works across the region.

Works on an unsealed dig out were undertaken this month on Maungatapu Road.

Tree felling works were undertaken on Port Underwood Road between Karaka Point and Whatamango Bay under road closure this month.

There was a significant amount of find and fix undertaken in August of note on local roads were potholes, drainage clearance, edge marker post installation and edge breaks. On state highways replacement of marker posts, potholes and litter removal were the highest categories of works.



**Figure 1 - Newly metalled and mowed Cable Station Road**

### **Monthly Programme Summary**

The focus this month is to confirm the programme and have lump sum and renewal activities approved in RAMM, to the end of September 2024.

The Q1 September focus;

- Unsealed roads preparation and wearing course
- Drainage maintenance
- Heavy maintenance activities on local roads
- New and replacement signs
- Barrier repairs
- Structural maintenance, component, and renewals (for bridges, jetties, and boat ramps)
- Preparation of RAMM categories and dispatches for the 24/25 season
- Confirming funding and allocation for the next three-year NLTP

## **Marlborough Road Activities**

### **Maintenance and Operations**

Routine and lump sum maintenance is continuing as per the contract requirements. With the release of the NLTP funding decisions the current year's budget provides very little in the way of additional maintenance. Some re-programming of works will need to be undertaken to ensure our programme stays within budget.

### **Renewals**

The Joint Venture team are working on finalising renewal programmes for Drainage, Unsealed Roads, Surfacing and pavement Rehabilitation. Unsealed road and drainage renewals are already underway based on conservative programmes that were adopted by Council through the Asset Management process.

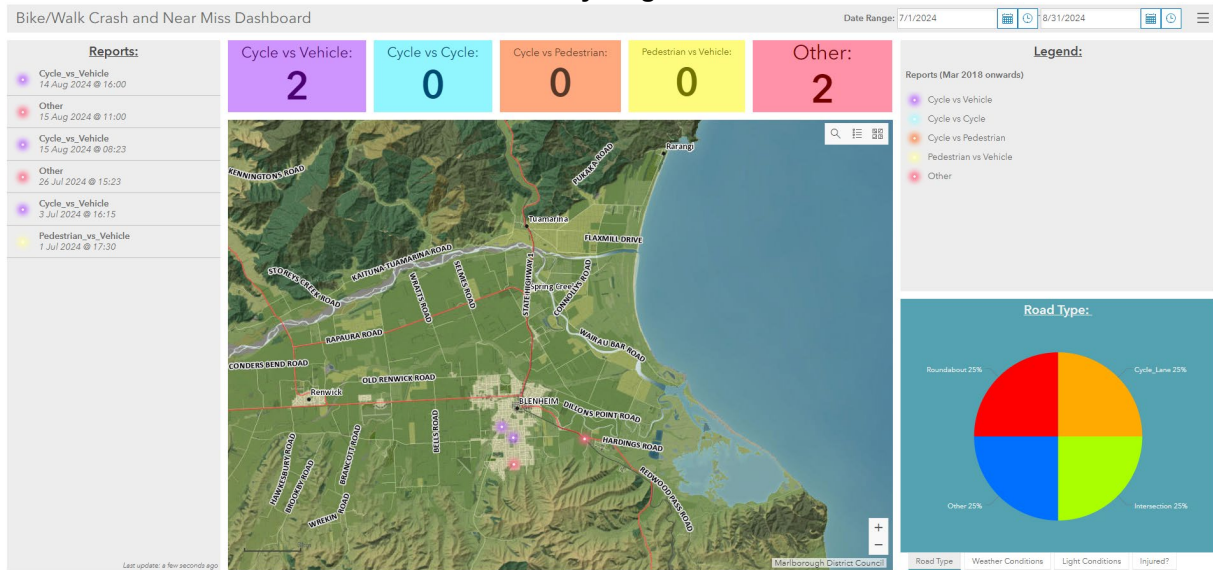
### **Marlborough Roads Team**

We have a new Network Manager joining the team in October. This will mean that in a very long time the team is fully resourced.

The team have all been very busy finalising works programmes for the coming year as well as dealing with Customer enquiries.

The lease on our current building expires at the end of March 2025. The team will be moving to our new office at 28 Alfred Street early in the new year.

### Bike/Walk Crash and Near Miss Dashboard – July-August 2024



## Stakeholder and Communications (June Report)

### Summary from Communications Manager

The total number of customer enquiries in August was 67, below the previous month with 107 CRMS in July 2024. Enquiries were also down when compared with August 2023 with 102 CRMS. Of the 67 CRMs, 87% were for local roads and 13% for State Highways, with 100% resolved.

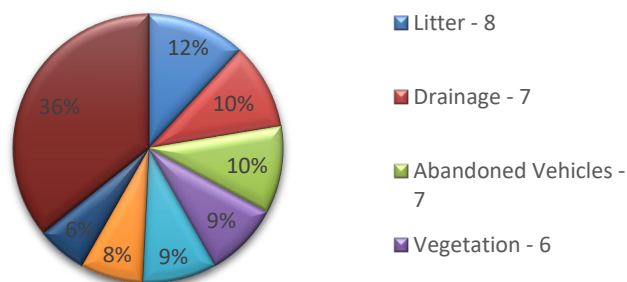
The highest number of enquiries were for litter with eight CRMS in August 2024. This is an increase on the previous year, with three litter enquiries in August 2023.

There was a significant decrease in cycleway and footpath enquires on the previous year with four in August 2024 compared to nine in 2023.

Also of note, was the sign category which had a 50% reduction in enquiries compared to the previous year. This can be attributed to having a high August 2023 result due to a vandal defacing signs on the network.

Please note, descriptions are as per CRMS categories.

### Customer Enquiry Type - August 2024



There was one compliment received in August 2024 from the Senior Network Manager regarding the quality of the edge breaks on the state highway.

Three customer feedback enquiries were completed in August with an average of 5 for customer service received from the MRJV Team (with one being very poor and 5 being very good).

One Letterbox drop was completed this month for tree felling works on Port Underwood Road. These works were also notified via Antenno, VMS and with direct engagement to stakeholders. Other stakeholder engagement this month included the freight forum held in Nelson.

Northbank Road's closure on August 22 due to a rock fall was notified to the public via a media release, Antenno, website alert and Social Media posts.

**Future Month Focus:**

- Local Road notification process refresher
- Communication planning for 2024/25 construction season
- Communication planning and roll out for upcoming significant impact work.

## **Road Safety (August-September Report)**

### **Monthly Summary from Network and Road Safety Manager.**

#### **Local Road Crash summary:**

The Contract has had one DSI crash on the Local Road network recorded in CAS for August 2024.

# Marlborough Roads Recovery Team Update – August 2024

---

## Executive Summary

### Health & safety

All physical works currently being delivered by subcontractors, more focus required on getting Critical Risk Conversations occurring more regularly across the worksites and raising awareness of requirements.

### Environmental & Sustainability

Sites visited by the Environmental Manager during August included the completions for Cullens Point, Moenui Box Culvert and Daltons Bridge approach, as well as the rail iron wall by RMF at Ngakuta Bay.

All sites showing good knowledge of the environmental risks at their sites.

The new sediment control boom and curtain system was applied successfully at Daltons Bridge for the abutment repair and scour protection works.

Approval obtained for the Landscaping works to be awarded, with a joint approach with Landscape Marlborough (planting and shrub supply) and Marlborough Turf Professionals (hydroseeding) to be finalised.

### Construction

Construction is continuing in full swing with several large sites along Queen Charlotte Drive nearing completion, 24 out of the 476 total phase 2 faults are remaining.

Also, good progress has been made overall in the month with priority 1 faults (Phase 1 & 2) works now down to 22 sites remaining from the previous months 26#.

### Commercial

Phase 3 funding has been confirmed. Awaiting formal variation/instruction.

Phase 2 remaining funding is tracking positive with a current forecast showing circa \$12M contingency.

### Programme

Currently working to complete Phase 2 and review of Phase 3 Budget Programme has commenced with a workshop in late September to review opportunities for improvement and meet MDC's expectations on any priorities they have.

### Customer & Stakeholder

Community stakeholder satisfaction continues to be high with MDC and the Kenepuru Community Group.

Customer enquiries have been increasing with more works in the Sounds areas especially the Kenepuru, they have largely been positive with customer's appreciative of work being done.

There has been an increase in positive news stories with MDC confirming phase three funding, and high priority sites being completed on Queen Charlotte Drive.

Client has requested team to review Phase 3 programme for an earlier finish than currently forecasted.

### People and Culture

We thank Rob Løbker for his sterling effort over the last 15 months and wish him success in his new role in the Middle East.



Larrisa Kodma joined the team to take over from Camilla while on maternity leave. A series of TEAM's handover sessions between them both will be arranged in due course.

Hani Faraj will return from his annual leave in mid-September. He will be taking on the NOC-Recovery Interface Manager role for the Kenepuru Zone with the aim to streamline the works and utilise opportunities while there are significant recovery works ongoing in that area.

It is evident that whilst the team has been delivering well, we have little reserve when it comes to staff being on holiday, sickness or other events. With this in mind we are currently looking to secure an additional Zone Manager and Superintendent to join the team.

There will also be a likelihood of other additional staffing requirements as we look to improve/accelerate the current Phase 3 Programme as requested by the Client.

The spring season is upon us meaning that several social sports are starting back up again. Together with NOC BAU we're setting up teams for Volleyball, Mountain Biking and the annual corporate rowing event. These are good opportunities for team bonding between the Recovery and BAU teams.

### **Living Safely**

H&S processes within the JV has moved over to Living Safely v2.0 from the 1st of July. Although the general management of H&S has not changed much through this new version, there is more focus on Critical Risks and Critical Risk Conversations (CRC's).

### **Subcontractors**

With the rollout of living safely in July and subsequent subcontractor toolbox it was determined to have all subcontractors use the MRJV risk control plan to standardise the daily risk management template across the project. This template includes the Life Saving Rules and subcontractors have also been provided with LSR signage to place alongside site hazard boards to ensure these conversations are occurring as part of daily prestart.

SSSP checklist has been developed and being incorporated to provide standardised information being included in site planning.

We will be looking to incorporate early site inspections as new worksites start up to verify works are in alignment with plans and processes.

## **Environmental**

### **Consenting Progress**

Wilkes Resource Management (Wilkes RM) have completed and submitted the retrospective consent application for the clean fill on Croisilles-French Pass Road alongside an approved volume from the farm operator for future filling should it be required. MDC is still awaiting the affected party approval form before issuing the consent.

Wilkes RM have completed the draft document as far as they can for the Whatamango Clean Filling area. The final drawings and method will be provided to Wilkes once DoC approval and conditions to fill the dog park area is received. This will move the fill site further away from the sensitive marine environment. Iwi dialogue has been undertaken and there is general acceptance / support for the filling to occur, with some re-planting and finalisation conditions. Final confirmation pending following Te Ātiawa referring the planned works to Waikawa Marae for comment. To be updated in September's report.

Wilkes RM have completed the application for the fill site on Northbank Road to accommodate the rock fall risk removal site at 17km.

## Environmental Highlights

- Sites visited by the Environmental Manager during August included the completions for Cullens Point, Moenui Box Culvert and Daltons Bridge approach, as well as the rail iron wall by RMF at Ngakuta Bay.
- All sites showing good knowledge of the environmental risks at their sites.
- The new sediment control boom and curtain system was applied successfully at Daltons Bridge for the abutment repair and scour protection works.
- Approval obtained for the Landscaping works to be awarded, with a joint approach with Landscape Marlborough (planting and shrub supply) and Marlborough Turf Professionals (hydroseeding) to be finalised.

## Construction Summary

### Progress Update

August marked completion of a couple of our larger complex works remaining on Queen Charlotte Drive, being the Cullens Point wall and Moenui Box Culvert sites.

Good progress has been made overall in the month with priority 1 faults (Phase 1 & 2) works now down to 22 sites remaining from the previous months 26#.

### Construction Issues and Challenges

There has been a recent lull in the issue of designs, however September should start to see a pickup of the issue of these with a further surge of minor and simple works into spring/summer period. This will increase the risk with truck movements in and around the sounds as holiday makers start making their way onto the roads.

Kenepuru Road is also planned to lift its resident only restrictions up to the Watertank slip late September. This will also see increased traffic movement from members of the public.

### Handover

This month a focus was undertaken of handover of completed Complex, Simple and Minor sites within the French Pass zone. Notices have been raised with the client updating the ongoing progress in this area.

With the departure of our handover engineer with an earlier than planned paternity leave, zonal handovers will slow for a short period while we arrange a handover with the new handover engineer, which will be undertaken in due course.

(We have also reviewed the staffing requirements and our conclusion is that we are light in numbers for Phase 3. Plan underway to address).

Limestone slip snags have been completed towards the end of July allowing this complex site to be handed over to BAU.

### Cost Summary

The August 2024 claim totalled \$2.300M. During the month there was constructional spend of \$1.476M, \$299,688 P & G spend, traffic management spend of \$178k and design spend of \$346k.

The major construction works undertaken this month by zone were as follows - QCD \$1.154M; Kenepuru \$100k; Pelorus \$177k.

## Remaining Budget

The programme in total has approximately \$35.047M of budget remaining to cover both physical repairs, design, client-side costs etc.

## Programme

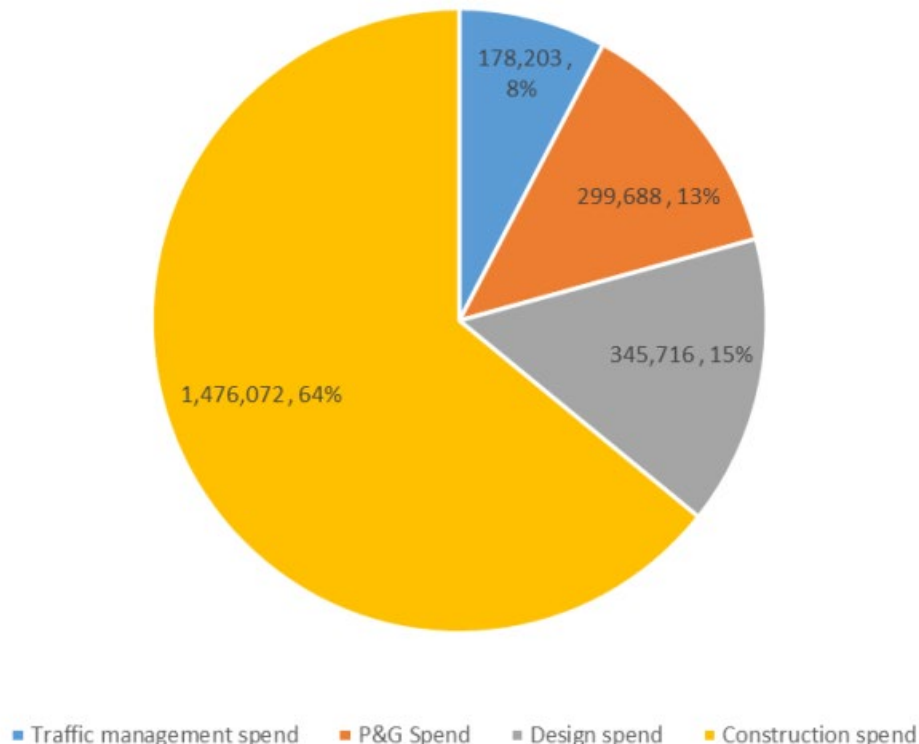
### Progress Update

Northbank remains the longest path on the project with delays seen in the optioneering stage due to timing of parental leave and completing deliverables. Design Hub team is working with BECA to try and mitigate delays although due to the specialist resource this requires little gains can be made. The remaining design process programme is worst case scenario based on one of the two potential options. Significant time can be won back if the earthworks options is favourable for this site.

Other programme notes:

- Pukenui site which has passed its optioneering stage and is now in detailed design.
- Watertank slip design is expected on the 4th of October 24, design is an approximate 100m long H-pile wall which is key to be constructed prior to Christmas. This will be achievable with the right contractor, procurement process to reflect this.
- Phase 3 programme has been currently baselined as per the Phase 3 funding programme.
- Programme Workshop planned for late September to review where we can gain betterment of the Phase 3 Programme.

### Claim Spend Analysis



## Communications & Engagement

In August 2024, the weekly recovery newsletters included information on closures on Kenepuru Road at night for drilling, Daltons Bridge, Wharf Road in Okiwi Bay and Northbank Road for emergency works. The intention to remove the resident restriction on Kenepuru Road as far as Onahau Road was also notified throughout August. Information was also included on works being undertaken in the French Pass, Kenepuru, Northbank, Pelorus, Queen Charlotte Drive and Waihopai Zones.

All newsletters continue to be shared via the Council's Antenno app.

Customer interactions are on par with the previous month with 24 enquiries in August, compared with 20 in July. Of the 24 enquiries, the majority were regarding the Kenepuru Zone with 15 or 63% of enquiries. Five were regarding faults following heavy rain, four were related to access and two were relating to suppliers.

In August there was four media stories relating to recovery. Three of the articles were from a MDC media release celebrating sites being completed on Queen Charlotte. This story was also published in the Council's Weekend Express pages. The fourth story regarded the NZTA funding being a month away, published on Stuff.

The NZTA internal Transport services newsletter included an article on the recovery works progressing on 6 September.

Four posts were shared on the Council's Facebook page in August. The post on the works completed on Dalton's Bridge and the end of the six week closure had 23 likes, four comments and four shares. Two posts regarding the Northbank Road closure to rock fall and subsequent emergency works under a day closure received a combined total of 34 reactions, 51 comments and 12 shares. The post sharing the media release on the Queen Charlotte Drive works completion had 78 likes, six comments and 7 shares.

Stakeholder and community engagement was undertaken for the extension of the Dalton's Bridge closure by one day to undertake sealing, the Wharf Road in Okiwi Bay closure and the Kenepuru Night closures. This included notification to emergency services with an onsite contact.

## Progress Photos









# Rivers and Drainage Section – Activity Report

---

(Information prepared by Andy White, Anne Bruce, Duc Nguyen, Frank Westergard, Geoff Dick, Gregor Punzel, James Mills-Kelly, Lucie Klimkova, Steve Bezar) R700-014-01

## Wairau River

### Flood Damage

#### Wairau True Left Bank below SH 6

Erosion has been ongoing for quite some time, presumably since August 2022, damaging both the bank and the training bank WAT11. Around 400 tonnes of medium and toe rock have been placed in two groynes to divert high-velocity water from the bank. More groynes will be needed. Rock was sourced from Pukaka and Havelock quarries.



Figure 2 - Contractor Preparing Site



Figure 3 - Finished Groyne

### **Spring Stopbank/Training bank Maintenance**

Vegetation control has been carried out on stopbanks, with a digger and tree shear removing larger trees that interfere with the reach mower. Mowing maintenance has been completed on the Lower Wairau and northside between Wairau Tuamarina and Waihopai confluence.

### **Stopbank Conders Bend**

Repairs have been made to the river-facing side of the Conders Bend stopbank.



**Figure 4 - Damaged river face of main stopbank**

### **Spring Creek Works**

Stage 1 of the Spring Creek works is complete, with a dozer shaping excavation works. Grass seeding will occur on 17/09/24, and remaining rootball offcuts will be chipped soon.





**Figure 5 – Spring Creek Widening Project Stage 1 completed**



**Figure 6 - Stockpiles, that will be hydroseeded**

### **Lower Wairau below Gills Crusher**

A dozer has pushed the inside bar into a heap for easy contractor extraction, reducing pressure on the opposite bank. This follows the stage 1 Spring Creek widening works.



Figure 7 - Success, river has spread across entire width LW below Gills Crusher

### **Wairau River Inspection**

A helicopter flight was undertaken to set up the annual work program for the Wairau. A helicopter inspection covered the Waihopai and Wairau Washbridge down to SH1 Bridge. A follow-up flight will include Lower Wairau, Diversion, and Lower Ōpaoa.

## **Wairau Floodplain and Tributaries**

### **Lansdowne Nursery**

Willow Moutere stock has been harvested and replanted in the nursery. Undesirable varieties were removed and space was made available. This variety is a fast growing, non-spreading hybrid.

### **Tuamarina**

A pump station at Parkes Drain failed after a minor rain event and was promptly fixed through contractors.

### **Are Are Creek**

Willow growth around the road bridge has been cleared, improving drainage.

### **Ruakanakana Creek**

Emergency Works have been completed just below Bedfords, widening the channel to prevent overflow. In the past the creek has got choked and overflowed the banks, which is undesirable.





**Figure 8 - Creek widening completed**

The first control gate of SVIS has been upgraded. Works were needed as debris has made gate stuck over and over again. This is a crucial asset for Renwick lower terrace flood protection.



**Figure 9 - Debris screen added**



## **Terrace Creek, Renwick**

An unsafe intake structure was repaired by replacing a missing board.



**Figure 10 - Terrace Creek intake structure**

## **Drainages**

### **Taylor River: Mark Smith Reserve**

A dangerous tree has been removed in the Mark Smith Reserve by an arborist contractor.

## **Picton, Sounds and Awatere**

### **Picton and Waikawa Streams**

An on-site meeting with a contractor was held to set up works for the upcoming greenscape maintenance run. That includes most of the streams in Picton and Waikawa.

## **Investigation and Miscellaneous**

### **Capital Works**

#### **Contract 22-216 Town Branch Upgrades – Connor & CMP Blocks**

Work completed since the last report includes completion of the new railway culvert, the new vehicle bridge in the Connor property, commencement of landscape planting and ongoing drain widening. High water levels in the drain have curtailed below-ground works such as the culvert outlet and inlet structures however progress is made as weather allows.





**Figure 11 – Abattoir Drain planting**



**Figure 12 – Connor bridge construction**



**Wairau Stopbank Realignment: Upper Condors**

Warm September weather has allowed for hydroseeding to take place.



**Figure 13 – new Condors stopbank hydroseeding**



**Figure 14 – new Condors stopbank realignment during the flyover**



# Quarries

## Pukaka

Removal of overburden and smaller crushable rock at the top of the quarry continues. The tip of the rock seam produced small amounts of large armour rock used for repairs over winter.



Figure 15 – Pukaka Quarry top bench working



Figure 16 – toe rock from the top of the seam

# Waste Management and Minimisation – Activity Report

---

(Information prepared by Mark Lucas and Georgie Sullivan)

W300-006-008-09

## Waste Management and Minimisation Services Contract # 2021-077 (Contractor – WM New Zealand)

### Wheelie Bin/Kerbside Collection

#### Feedback

We are slowly progressing to the point that Wheelie Bin Kerbside collection is becoming the norm. We are now receiving a lot of positive feedback like this below.

*Just had a call from a resident on Fulton Street (name and address removed) who wanted to thank Council for the New Wheelie bins.*

*[name] is 90 years old and she used to find it hard dragging the black bags out to the gate but finds the new bins a breeze and is very pleased with them.*

The above feedback is consistent with other feedback we are receiving.

#### Windy day solution

On Thursday 29 August we had the first big Norwest wind hit the region for the spring. As a result, we had a number of recycling bins blown over. We have a solution for this problem but it was not in place for this day as the winds hit a bit earlier than expected.

The solution is the clip below. This clip is made of rubber, easy to install and pops open with the weight of the items in the bin, once tipped upside down. It is attached to the lid handle and requires no tools to install.

The cost of these clips is \$5.05 per unit for an order of 5,000. We would recommend offering the first set for free and then a cost recovery system for additional units.

## SAFEWASTE MULTI-FIT LID LATCH



You can watch the installation video via the link below

<https://www.youtube.com/watch?v=1fBJjYA1W0>



## **Transfer Stations**

### **Recycling**

There have been a number of comments regarding the size of the recycling holes in the bins at the Transfer Stations. These are the standard size from the manufacturer and they are designed to help reduce contamination. A number of people have requested these to be made bigger so that they can bulk deposit recyclable products in these containers. Contamination is the biggest issue with this change as we are finding in Blenheim that people are just throwing everything in any bin. I have thought of a possible solution to this issue that would possibly work. These are ongoing discussions.

### **Recycling Centre**

Agrecovery have decided to follow Metallic Sweeping and not use the recycling centre as a collection point for their product in the interim. The service is a product stewardship scheme and will still be offered to the community but it will be run directly by Metallic Sweeping.

There have been a couple of issues identified with the change of contractor and these require working through. The LOS has not decreased to the public, the drop off site has changed.

### **Remote Transfer Stations**

- We had an issue with the personal gates on the RTS sites that we have built. The Marlborough Norwester was a bit much for the catch. A modification was made to the gate frame and a new, sturdier catch has been installed.
- We have received a number of calls about the size of the holes in the recycling bins being too small to put in all the recyclable product. It transpired that the holes were incorrectly manufactured and they have now been re-cut to the 200mm diameter that they were designed to be.
- We are currently confirming sites for the next five sites to be built. We have sent information to the local communities to confirm they agree with the proposed sites. Once we have the community backing, the next step is to proceed with the RM Act requirements. As there is a cost to this, we believe it is important to have the community backing before that process is started.

## **Blue Gums Landfill – Contract # 21-039 (Contractor – Roding and Asphalt)**

### **Soft Plastics at the landfill**

As part of the final completion walk-over at the landfill it became evident that soft plastics are an issue at the landfill. The soft plastics are being blown up the hill from the tip face. As of 1 February 2024, we have not been able to collect soft plastics at the kerbside collection with the mandatory products now being collected. I have questioned the rationale of this legislation to the Minister of Environment and the Minister of Regulation via our local MP. The most frustrating factor is that we have an outlet to recycle soft plastics in Marlborough. We will be starting a campaign to encourage the public to use the soft plastic recycling program that is currently running to divert soft plastics and hopefully reduce this issue.



Figure 1 – Soft plastics blown from the tip face.

### **New Zealand Emission Trading Scheme**

As previously reported, the NZETS has been reviewing the way they have calculated the liability. This work has now been completed and after listening to most of the TA around the country they have decided that the new calculation will be implemented in 2025, giving councils the opportunity to budget for the increase. With the new calculation it is anticipated that our liability will increase by approximately \$200K to just over \$1m annually (with our current volumes).

## **Reuse Centre - Contract # 21-159 (Contractor – JBL Environmental)**

### **Construction and Demolition Waste**

With the introduction of the new contractor there has been some momentum in reusing of new products. One of the areas that we are moving into is the reusing of building and demolition products.

The first building where some of the products are being diverted from the landfill to the reuse store is the old terminal building at Port Marlborough.

All the glass from the building has been diverted for recycling and now there is a steady flow of wood coming also.

This was the first load of timber delivered and it was snapped up in a day and we now have a back log of orders before the wood is delivered.





Figure 3 – Wood being reused from the Ferry terminal.

### Donating recovered products

**Reused Plates:** The Reuse store had a request for assistance from Outward Bound at Anakiwa. They were having issues with keeping up with broken plates. All plates that are being recovered at the Reuse store are being donated to Outward Bound.

**Cooking Implements:** Blenheim School is setting up a kitchen for the students and approached the Reuse store for equipment to stock the kitchen. As these products are coming into the store they are being donated to the project.

## General

### Rebranding

As a result of the new Contractors starting, all the signage at the Council Waste Facilities is now obsolete as they all refer to the old contactor and old costs. In the interest of specifying the correct information it has been planned/budgeted to up-date these signs. As a part of this rebranding, it is considered that the naming of the sites should reflect the common English terms. Some of the sites have been named with the waste industry terms that do not reflect the common English terms, for example the Resource Recovery Centre is called the recycling centre; the Waste Sorting Centre is a Transfer Station. For a number of reasons, most importantly to reduce confusion, it is important that we use consistent language across all of the Council waste facilities.

# Services and Operations

---

## Education Report – September 2024

(Information prepared by Annie McDonald on behalf of the education team of Annie McDonald, Angela Wentworth and Ramona Millen) E340-001-001-01

Highlights from kindergartens and schools can be found in our term Greenchat - [GREENchat - Marlborough District Council](#) sent out to schools at the end of each term.

Programmes we deliver as part of our environmental education work to schools and ECE's can be seen here [Environmental Education Programmes - Marlborough District Council](#)

The Enviroschools Marlborough website shares local school and kindergarten stories - [Blog and Stories - Enviroschools Marlborough](#)

The MDC education strategy comes from the council vision and has a goal of “Behaviours and Actions that lead to positive environmental change.”

The four main areas of focus are:

### Working with Schools and ECE centres

- Provide educational resources, teacher support and experiential learning opportunities
- Deliver professional development for teachers and students
- Connect with MDC staff, conservation groups, iwi, and government agencies

### Supporting Enviroschools

- Provide and deliver teacher professional learning and student leadership opportunities within the Enviroschools framework
- Continue to grow and deepen the Enviroschools process
- Support student led school and community projects

### Providing Opportunities

- Deliver and support opportunities to develop student agency and leadership for the environment.
- Support MDC related plans and actions
- Encourage local volunteering opportunities

### Engaging with Community

- Share information about the education programme
- Be an active participant in NZAEE<sup>1</sup>
- Collaborate and connect with other relevant organizations working in the EEfS<sup>2</sup> area

This report will reference these areas of focus.

**Twenty-one visits have been made to schools and ECE centres this term on** a wide range of programmes from setting up recycling systems, to planting native areas and learning about bird counts. There are some great young environmental caretakers and action takers in this region.

**Working with Schools and ECE Centres** - Nature Connection Sessions have been supported at four kindergartens and three schools. There is a growing interest in using Nature Connection as a way to engage students in environmental actions. Schools taking part in Nature Connection have gone on to plant native areas at their space of learning. They have looked at alternatives to plastic wrap and are using our Bees Wax Wrap Kit to make cloth beeswax wrap as an alternative packaging in lunchboxes. They have

---

<sup>1</sup> New Zealand Association for Environmental Education

<sup>2</sup> Environmental Education for Sustainability



taken part in a Litter Intelligence programme and been interested in learning about the biodiversity that they see in nature.

Four schools have taken the opportunity to be part of a collaborative project with LandCare and Grovetown Lagoons called Junior Wetland Warriors helping each fortnight to plant trees and learn from the experts about why restoration of areas and erosion planting is important.

**Supporting Enviroschools** - A principal's breakfast was held with 10 registrations from principals new to Enviroschools or to the school they are working in. Information was shared about the changes to the Enviroschools Guiding Principles and the Holistic Reflection Process where levels are being phased out. In the Marlborough region we had sought feedback from the Principal's Association meeting in 2023 as well as lead teachers and had begun this process. A similar meeting is planned for kindergarten head teachers and senior management early in term 4.

A tour for visiting a local Enviroschool to see plans and projects in action was offered to teachers new to Enviroschools. This has been postponed until early 2025 after feedback that students new in Envirogroups would value an opportunity to see actions in Enviroschools with teachers.

Two schools have done a stream study as part of their learning around fresh water and an opportunity to look at a programme around making bug bags to study stream health is being explored following an interesting presentation from the Canterbury Enviroschools team.

Three schools are booked in for stream study programmes as part of their camp activities.

**Providing Opportunities** - Two of our team took the opportunity to visit the Nelson/Tasman environmental expo for teachers. This is an opportunity that could be offered to our teachers in 2025 so it was useful to see what sorts of providers took part and what was on offer. Following the expo we are putting together a camp kit for schools to take on camp with some environmental activities and also creating a bike blender to share how energy can be used with help from the Menz Shed.

Nelson and Tasman education teams are investigating running a climate camp in term 4, 2025 and have offered an opportunity for a group of Marlborough intermediate age students to take part. Both of these regions are currently running a pilot climate education programme with intermediate age students as part of a wider climate action programme. Our team is meeting with some of the developers of this programme to see if there could be an opportunity to run the pilot programme in Marlborough in 2025 and what costs would be associated with that.

**Kids Edible Gardens** - There is some very cool things happening in the school's gardens around Marlborough. Our programme funds school facilitators to work in with the garden for a few hours each week with students, teachers also school support further learning in classrooms. Our team try to capture some of these activities in our blog stories but here are a few extras. More to come for the next report from other schools in the programme. Rapaura students planted garlic bulbs during the winter season and even were brave enough to taste them raw! Canvastown School students dehydrated fruits from their orchards. Redwoodtown students pruned their grape vines and made kale chips from the kale they harvested (Best use of kale if you were to ask me!) Tua Marina students planted lots of winter seedlings then noticed the birds were eating them so made protective tee pees. Mayfield students got stuck into the compost bins, making some great compost for the gardens. Witherlea students made "delicious" apple muffins and tucked up their gardens with a layer of mulch for winter. St Marys students grew a cover crop for winter and made fruit protectors for fruit trees from recycled materials. Renwick School students made slug traps, grew their own seedlings and planted 130 out, one for each student in the programme (That's a lot of seedlings). Linkwater School students planted beans in jars, watched a time-lapse of the beans growing, and discussed plant parts and growth expectations. Fairhall School students made rain gauges and learnt how to prune fruit trees in their orchard and Picton School students are excited to have a new tunnel house which has just been planted out.

Next term four kindergartens join Kids Edible Gardens. It will be exciting to start them on this programme that came from humble beginnings of students wanting to reuse lunch food scraps and compostable materials and turn it into something useful and fun to learn about. After a pilot of six schools in 2006, there are now 24 schools taking part in the programme.



## Marlborough District Council Education Strategy

**Vision:** Marlborough is a globally-connected district of smart, progressive, high-value enterprises, known for our economic efficiency, quality lifestyle and wellbeing, caring community, desirable location and healthy natural environment

**Education Goal:** Behaviors and actions that lead to positive environmental change

**Learn and practise new skills** to identify and help solve environmental challenges

**Te Taha Tinana**

**Grow knowledge and understanding** of different perspectives on the environment and apply new thinking to environmental challenges

**Te Taha Hinengaro**

**Develop values and attitudes** of concern for the environment, while experiencing outdoor learning in the environment

**Te Taha Wairua**

**Participate in active sharing and collaboration** with others to share and celebrate learning, actions and success

**Te Taha Whānau**

**What informs our work:** Marlborough District Council Long Term Plan, Waste Strategy, National Strategy Environmental Education for Sustainability; New Zealand Curriculum, Ti Tiriti o Waitangi; Enviroschools Guiding Principles

What we do:

### Working with Schools

- Provide educational resources, teacher support and experiential learning opportunities
- Professional development for teachers
- Connect with MDC staff, conservation groups, iwi, and government agencies

### Support Enviroschools

- Provide coordination and facilitation of the Enviroschools programme
- Continue to grow and deepen the Enviroschools process
- Support school led community projects

### Providing Opportunities

- Deliver and support opportunities to develop student agency and leadership for the environment.
- Support youth council related plans and actions
- Encourage local volunteering opportunities.

### Engaging with Community

- Promote and support delivery of Sustainable Living programme
- Collaborate and connect with other relevant organizations working in the EEFS \*area
- Be an active participant in NZAEE\*

\*EEFS – Environmental Education for Sustainability. \*NZAEE – New Zealand Association for Environmental Education

## 2022-2024 Strategic Priorities

- Delivery of an education programmes that aligns with Councils strategic priorities and adds value
- Development of programmes that support the growth of the local curriculum
- A focus on place based opportunities for students and young people
- A team that is regionally connected , informed by best practice and helps young people to take action



# Parks and Open Spaces Activity Report

---

(Information prepared by Jane Tito, Robert Hutchinson, Kiri Whiteman, Grahame Smail, Linda Craighead, Brad Molony, Regan Russell, James Gilmour, Carolyn Jones, Robyn Blackburn, Rachel Hutchinson, Murray Morgan, Ross Laybourn,)  
R510-009-000-01, R510-006-02,  
R510-005-04-02, R800-005-03

## Blenheim Parks

### Pollard Park

Maintenance is still the main priority at Pollard Park at present with staff working through all the gardens. All the rose gardens have now been weeded, fertilised and a layer of mulch added. The camellia gardens have also been weeded and tidied with all the dead heads from the flowering camellias removed. Staff have also mulched the cottage garden and perennial border.

Staff are currently working through the annual beds, with weeding and dead heading being the priority to keep the plants healthy and encourage more flowers to come through. Currently the annual beds are looking stunning with a lot of the tulip bulbs currently up and flowering in the centre bed. The purple tulip flowers can be seen in the left of the garden in the image below.



Staff are currently working on improving the lawns in both Pollard Park and Seymour Square. Lawns are being fertilised more regularly to try and increase healthy growth and colour and staff have also been dethatching the lawns throughout both parks.

The garden on the bank alongside Fultons Creek is looking amazing when viewed from above. A lovely acknowledgement of these annual beds from a visitor to Blenheim was recently received.

*“Visited Blenheim for the first time on the weekend. Chanced upon Pollard Park. The annual beds were nothing short of magnificent. Best I've ever seen (have been involved in parks/horticulture for a couple of decades). Your gardeners are doing an amazing job!! Please pass on my thanks.”*





### Seymour Square

Staff have just completed working through the annual beds at Seymour Square with weeding, hoeing and dead heading activities. The border gardens and rose gardens have also been given a quick tidy up and a layer of mulch applied to help retain moisture in the summer. Organic fertiliser was added around the plants before the mulch was applied. The mulch is good at slowing down the weeds while also adding organic material back into the soil over time.



Annual bed by the pump shed – Seymour Square



## Lansdowne Park

The Mako vs Bay of Plenty fixture on 31 August was played in thunderstorm conditions. A lighting strike on Marlborough Lines infrastructure took out the playing lights for a short period of time pre-match causing a 40-minute delay to kick off.

The playing conditions were a good test for the field as there has been a transition away from the biochar blended surface towards a sand surface. Two Mako fixtures were played and despite the 11mm of rain received over a short period of time the Tasman match day manager commented they were very pleased with the turf after the two games.

The media tower at the Park has recently been painted cardinal red in recognition of Marlborough Rugby colours at Lansdowne.



Although it is difficult to determine total numbers, given children accompanying an adult had free entry to Lansdowne Park, it is estimated over 5,000 people turned up for the first defence by the Mako of the Ranfurly Shield in mid-September. A fantastic spring day with the Park looking stunning went with a successful defence of the Shield.

## Lansdowne Hub

On Friday 23 August Blenheim ANZ hosted the amazing Ethel and Bethel Bingo Babes and 120 guests for a night of hilarity and fun at Lansdowne Hub. This was their annual Daffodil Day event to raise funds for the Cancer Society. They raised over \$9,000 and everyone at the event had a great time and Ethal and Bethal were amazing.





## Ballinger Park

Where there is a rubbish bin there is waste, both legal and illegal, for staff and contractors to have to deal with. Contractors discovered 150kg of soil in five rubbish bags dumped beside a rubbish bin at Ballinger Park recently. With contractor charges and landfill fees this waste cost just over \$300 to dispose of.



## A & P Park

The New Zealand Secondary Schools Gary Sowden girls football tournament was held at a wet and slippery A & P Park this past month with 16 South Island school teams taking part from Christchurch to Marlborough. Avonside Girls High School were the winners with Marlborough Girls College coming tenth.

A request for interest in design works for the A & P Park Pavilion has been advertised by the Council. This first stage in the new pavilion development project is to find an architectural/design company to undertake the initial design works.

Like Ballinger Park, a number of rubbish bags were recently left beside bins in A & P Park. Staff were alerted from a member of the public with contractors following up to dispose of the rubbish.





### **Taylor River pindone rabbit programme**

The pindone rabbit programme on the Taylor River has wrapped up. Dog walkers largely heeded the advice to avoid the area or to keep dogs on a leash. There were no reports of accidental poisoning either direct or secondary.

The programme is now in the next phase, which is the mop up shooting. Results of the effectiveness of the poisoning programme will not be known until another night count by the Council's Biosecurity Team is undertaken but a further report will be provided once the counts are complete.

## **Renwick Parks**

### **State Highway 6 - Rapaura Road – roadside berms**

Sadly, some totally unnecessary vehicle damage has been done to the large grassed roadside berm areas on both sides of the long ramp leading up to the Wairau River State Highway 6 bridge, on the southern side of the bridge.

Staff are investigating options to reinstate the normally mown grassed berm areas to ensure these areas can be maintained and reduce or limit the unnecessary ongoing destruction and damage to what have previously been very nice countryside berm areas. This is to both make these large berms look good, as an entry statement to the wider Renwick area, and provide a safe, informal roadside rest space for travellers to use and enjoy.

## **Awatere and Flaxbourne Parks**

Staff are working with both the Flaxbourne Settlers Association and Awatere Community Trust to renew maintenance services contracts with the Council. For the Flaxbourne Settlers Association this includes maintenance of the Ward Cemetery, Flaxbourne Hall, Ward Domain and some roadside mowing. In Seddon the Awatere Community Trust looks after management of the Seddon Camping Ground, the Seddon swimming pool and the Awatere Community Hall (the Domain itself is managed and maintained by the Council).

The renewal process involves more than one section of the Council with Parks and Open Spaces, contracts and risk, legal and financial teams all providing input. The review process will ensure the maintenance agreements remain fit for purpose, achieve what is needed and activities or services are cost-effectively delivered.

### **Ward Solar Farm**

Work to progress and develop a solar farm immediately adjacent to the eastern side of Ward Domain (the Domain) is well underway. Staff have been involved in discussions with the community through the Flaxbourne Settlers Association and Marlborough Lines who will build and operate the solar farm.

As a condition of resource consent there is significant tree work required along the existing tall conifer tree line between the Domain and the solar farm area. Along this eastern boundary and within the Domain, a roughly 3-metre-high shelter belt of native species trees and shrubs will be planted to form over time, a largely maintenance free, pleasant eastern boundary backdrop to the Domain and ensure the solar farm is not shaded so it can operate effectively.

## Picton Parks

### **'Carnatic' immigrant sailing ship - 150th Anniversary**

On 10 January 1875 the sailing ship Carnatic anchored just south of Mabel Island in the outer Picton Harbour. It offloaded 197 passengers destined to settle in Marlborough and was the only immigrant ship to come directly to Picton from England.

Staff are working with a small group of descendants to put together and install a small interpretive storyboard panel overlooking the anchorage site and tell the story of the Carnatic and some of its immigrant passengers. This will coincide with the 150th anniversary early in 2025. The location for the storyboard will be in one of the carparks on Victoria Domain overlooking Mabel Island.



### **Auckland Street Reserve – Picton Skate Park and Youth Space Revamp**

The continuation of some key aspects of the revamp of the Auckland Street Reserve – Picton Skate Park and Youth Space is due to get underway shortly. This Stage 2 work has a focus on a revamp and modernisation of the skating aspect of the space and it is hoped that the on-the-ground work will be completed by summer.

The newly formed Skate Marlborough group arranged a community get together at the skate park in mid-September to discuss the provision of skate park facilities in Marlborough.

### **Community garden opening**

A small, informal 'soft' opening was held recently at the Huia Street Reserve site of the Waitohi Picton Community Garden by representatives of Envirohub Marlborough, who have a lease for the area and will manage and run the community garden. Also in attendance were representatives from Te Ātiawa and children from the nearby Waikawa School. Those gathered 'broke ground' and planted a few trees and shrubs. A more formal opening is planned sometime in the future.





Finished car parking and fencing – Huia Street community garden

### Shelly Beach Reserve improvements

A second beach shade umbrella kindly donated by the Picton Lions was installed at the south end beach area of the Reserve. As part of the rock revetment shoreline protection some additional rock has been placed to help better protect a small section of the beach and Reserve shoreline from erosion. Some more flat rounded rock is being sourced to be placed to allow better water access and general seating options at this popular area.



The native ice plants planted a few years ago are doing very well in helping to stabilise the top of the rock revetment and soften the margin along the revetment and grass open space interface.





As part of some recent critical water and power supply renewal work at the Shelly Beach toilets, a beach wash down shower moved a step closer with the installation of a water supply through inground ducting from the toilets. The beach wash down shower was a community request through the Annual Plan process and is expected to be available well before summer.

### Port Marlborough Pavilion

#### *Marlborough Mount Everest Challenge*

Back for its fifth year, the Marlborough Mount Everest Challenge runs from 12 October until 30 November 2024. The event has come a long way since the first challenge in 2020 where there were 144 participants and it was very social, to last year with 341 participants and while still social, there is the added feature of trophies for different accomplishments such as the most individual climbs for those that are a bit more competitive. The Picton Foodbank is the charity sponsor again this year, with 20% of the entry fee going to this cause. Registrations are open on 16 September.

[www.everestchallenge.nz](http://www.everestchallenge.nz)





## Show Me Shorts Film Festival

Port Marlborough Pavilion will be screening the Show Me Shorts Film Festival again this year on 19 and 20 October. This year the following selections will be screened.

- **Whānau Friendly** - Meet space travellers delighted by our world, charming robots and radio-active chickens. Hear the song of our beautiful native birds of Aotearoa and discover unlikely friendships on the beach. This annual collection of short films for children and their families is one of the most popular sections of Show Me Shorts.
- **Aotearoa Ka Awatea** - The characters in this collection of homegrown short films are making sense of the world after a difficult time or crisis. They rise to meet their challenges, be they connection, redemption, justice, closure, understanding or peace. Ka pō, ka ao, ka awatea. From within the darkness comes light and a new day.
- **Sampler** - Highlights of the festival are collected in this package of short films. Equal parts moving and silly, you'll find here stories of triumph, friendship, fantastic creatures, and familial love. Stars include the likes of Joanna Lumley and Ben Whishaw, alongside local actors who shine. An excellent way to sample Show Me Shorts like a box of chocolates.

Tickets will be available on Eventfinda from 6 September.



## Northern Marlborough/Sounds

### Rai Valley Village Green celebrated

Recently, a long-held dream of a village green in the Rai Valley township was celebrated along with the unveiling of a pou and history storyboard panels.

Locals and the whole school from the Rai Valley Area School attended. The children sung waiata and performed a haka to support and acknowledge the three speakers Ruihana Smith, representing tangata whenua, Faye Leov, longtime resident, and for Council the Mayor, Nadine Taylor. After the speeches and unveiling, all gathered had an afternoon tea in the adjacent Millers Rest tavern, kindly provided by a couple of locals.

One of the panels tells the story of early Māori occupation and resource use in the area and the two other panels are a timeline, which traces European settlement and endeavour over the past 150 plus years. The Corten steel pou (built by local engineering firm REM), represents the rivers and streams of the Rai that all flow into Te Hoiere (Pelorus).

The village green development was made possible thanks to a lease with a local landowner and funding from Council and through central government's Tourism Infrastructure Fund.





## Havelock Pavilion

The Havelock Pavilion, which is Council owned but maintained and managed by the Havelock Community Association, recently had the ceiling in the men's changing rooms collapse. The facility was not in use at the time. It appears the glue that held the ceiling up has degraded over time due to lack of ventilation and increased use with Pelorus Rugby now using the Pavilion as their home turf.

Staff are taking the opportunity to install a high-volume extraction system and upgrade the lighting to LED in both the men's and women's change areas as well as ensuring the women's ceiling is screwed to avoid a similar incident.



## District Public Conveniences

### Renewal programme

Staff are working with suppliers on other key aspects such as consenting to deliver two replacement toilet facilities and one new facility in the Blenheim urban area. These facilities have been considered and approved by the Council following community interest and submissions through the Long-Term Plan/Annual Plan processes.

- A new facility for Horton Park is to replace the existing very old Stephenson Street toilet block with a new, modern auto-door facility located on Redwood Street. It is hoped this location will help reduce ongoing vandalism at the existing site and will improve the everyday availability for the community and Park users.
- A new similar replacement toilet facility is programmed for Oliver Park to be located slightly west of the community centre on Cleghorn Street. This will help serve the everyday use for the community and sporting group users of the Park.
- Staff are working with Robinson Construction to locate a new public toilet facility at the Westwood shopping precinct. This will be located in the northwestern corner of a carpark that will serve the new retail development currently being built to the south of the Bunnings building.

All going well it is anticipated that these three new facilities will be delivered in the first quarter of 2025.

## *Renwick Township – Uxbridge Street*

Staff are working on a solution to replace the old Uxbridge Street public toilet as this facility is well past its best and is difficult to maintain.

## **District Cemeteries**

### **Tua Marina Cemetery**

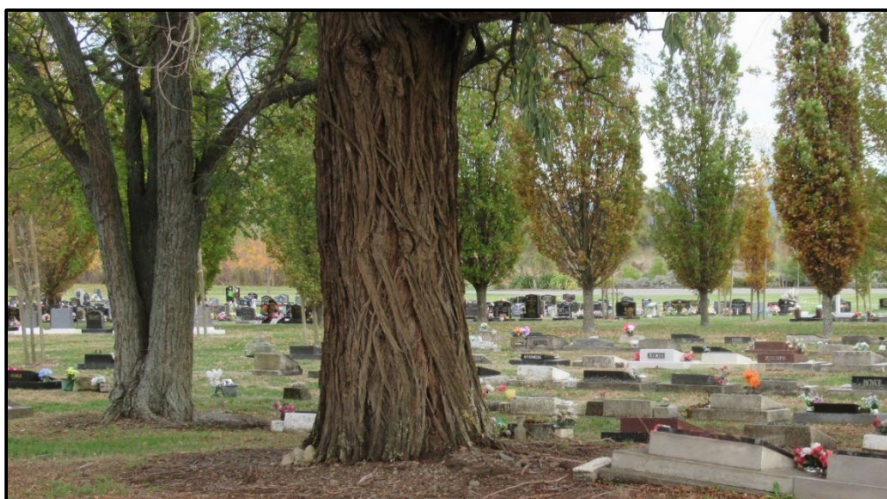
The recent heavy rain caused a relatively small slip at the Tua Marina Cemetery. However, given its location between burial beams and an internal road, an engineer was asked to assess the site. An inspection of the area found the hill was holding a lot of water. It has been determined that the drainage system is not sufficient and it is likely there are springs further up the hill. An interim drainage solution is being looked at for the site of the slip while a wider look at drainage for the entire cemetery will also need to be considered.



### **Fairhall Cemetery**

A large gum tree is to be removed from Fairhall cemetery as the root structure is lifting the adjacent burial beam. This is one of three areas within the cemetery where this is occurring. This particular tree is considered the priority as it is causing the most damage, however removal of two other trees will be staged over time.

The recent review of the Council's Tree Policy enables officers to remove trees in these circumstances, even when the trees are large. Unfortunately, at the time of planting, it was probably not considered that the tree could cause this type of damage in later years. The Tree Policy also provides the direction to consider these matters when planting now to avoid the same situation in the future.





## District Memorials

### Renwick War Memorial

Staff have been working with the Renwick RSA and Renwick Smart and Connected to upgrade the war memorial site to improve the overall usability of the space. This work will include relocation of the corner amenity moveable planters to nearby sites within the village, installation of a spotlight to light the memorial structure, removal of one of the fixed raised planters, installation of seating for resting and reflection and removal of small flaxes to create new hard surfacing areas. Any plants that are surplus to requirements are replanted at other parks or open space sites.

### Māori Battalion D Company War Memorial - Picton Foreshore

Re-staining of the Māori Battalion War Memorial carved pou whenua on Picton Foreshore will be undertaken shortly to keep this very highly visited and photographed site in good order and in preparation for the upcoming tourist visitor season.

## Walking and cycling

### Tirohanga and Barnes Tracks slips

Another effect of recent heavy rain was felt on both the Tirohanga and Barnes Tracks in Picton with slips on both causing a closure for not only clearing but concerns for the stability of land above the slips. Both tracks have since been inspected by an engineer.

The Tirohanga Track slip requires removal of approximately 10 to 15 cubic metres of dirt and clay off the track and above to ensure no further material will dislodge. Due to the location of the slip access to remove the material is difficult and will need to be helicoptered out.



**Tirohanga Track slip**

The Barnes Track slip saw more material from an existing rock fall come down. The face that was dislodged is now stable with no further loose material likely to fall. However, it has destabilised the adjacent area of



rock making the area unsafe to access. Engineers are gathering further information on possible solutions, and the likely costs associated with that, along with the level of risk to public and staff. The track will remain closed to the public in the interim.

## Trees

### Street tree planting programme

The 2024 winter street tree planting programme is almost complete. The letter drop to adjacent neighbours saw only four responses (out of 130) declining the planting of a new tree for various reasons. Some neighbours also took the opportunity to talk with staff out on the street when sites were being marked up.

Part of the planning process for planting new trees is to identify the location of underground services. It was discovered that 25 new trees allocated for Scott Street could not be planted as the underground services were in a different location to what was expected. This meant there was not enough room available in a narrow berm to accommodate the trees. However, the trees have now been able to be planted in other streets.

These trees will now go onto the three-year watering scheme to help them get established.



Rose Manor street trees in full bloom

### Harling Park trees

A large gum aged around 30 years recently fell in Harling Park, damaging part of the boardwalk and blocking the pathway. Staff were concerned as to why the tree fell as there had been no apparent issues, so a closer inspection was undertaken by an arborist. Drill holes in both feeder and support roots on the southwestern



side of the tree were found, the roots had been poisoned and had died over time. With the loss of these roots the leaf load and sail were sufficient to cause the tree to fall when the winds were from a southerly direction.



### **Damage to street trees**

Staff have found several other instances recently where people are damaging trees or undertaking unauthorised work on a tree.

Three mature street trees, one each in Lakings Road and Eltham Road, which have been pruned to such an extent that the best outcome is for them to be removed and a third street tree in Wither Road, which has been ring barked and will also need to be removed.

## **Playgrounds**

### **Ngā Taonga Tākaro**

Harko Brown recently ran a Ngā Taonga Tākaro workshop, which staff were lucky to attend. Harko is a teacher by trade and a Māori games expert who advises on mara hupara around the country. The workshop covered the whakapapa, tikanga and protocols for a variety of traditional games and ideas.

Part of the day was viewing what games and resources can be easily made using natural materials that don't have an impact on the environment and also playing the games themselves.

It was a very rewarding learning opportunity that gave valuable insight and ideas on traditional games that could be incorporated into existing parks within Marlborough.



## Playground visit

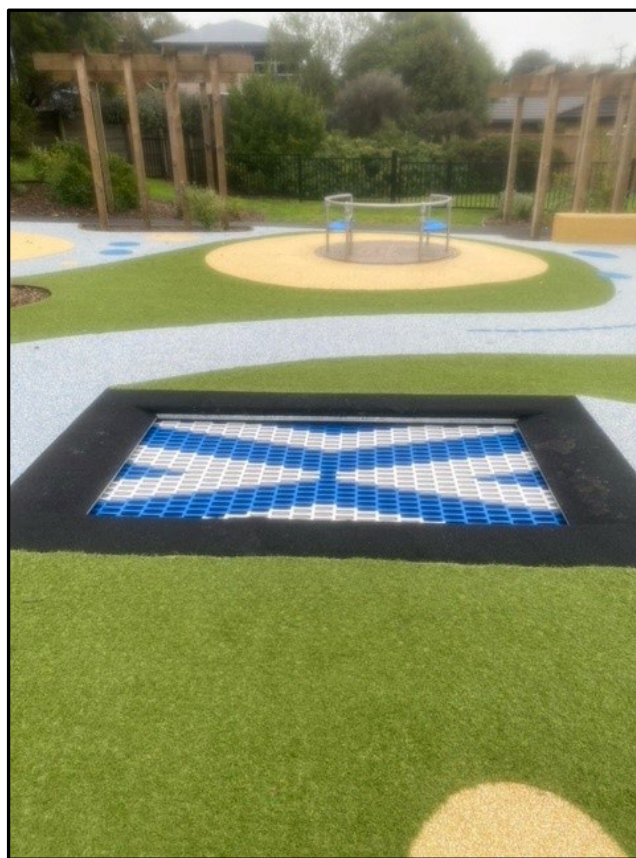
Staff recently visited two fully inclusive playgrounds in the North Island, the Magical Bridge - Claudelands (Hamilton) and Lorna Irene - Kapiti playgrounds, to gain further insight into what is required to provide a play space that anyone of any age can enjoy. Of interest was that both playgrounds were fully fenced with seats and picnic tables being within the fenced area.

The Magical Bridge playground was incredibly busy despite it being a rainy Monday. This playground was built in partnership between the Hamilton City Council and the Magical Bridge Trust. There were all ages and abilities visiting while staff undertook the tour. Later when the rain really set in, there were still visitors making use of the sheltered areas to enjoy lunch and the water features.

The Lorna Irene Drive Reserve in Kapiti was a great example of how a neighbourhood playground can be constructed so all abilities can enjoy it. This playground was fully funded by the Kapiti Coast Council and was a playground renewal although building it fully inclusive meant additional funding was required.



Magical Bridge – Hamilton



Lorna Irene Drive Reserve - Kapiti

## Policy and planning

### Asset management planning

Staff are in the early stages of reviewing the Parks and Open Spaces Asset Management Plan and have been looking at how other councils are preparing such plans. Nelson City Council (NCC) are well advanced on their parks asset management planning journey and are well resourced in this area with 5 FTEs, although they have a different structure to this Council. To gain an understanding of their process and hopefully learn from this staff met with the NCC team via Teams to discuss their journey and to build relationships in the asset management area. This proved very useful and follow-up meetings will be held over the coming months.

## Asset data capture

Recently, a holiday student visited most of the toilet facilities around the District (except the outlying Sounds locations) to capture all of the toilet fixtures associated with each public convenience. This included such things as hand driers, basins (cubicle and external), mirrors, pans, accessible toilets and more. This information was then included into the Parks and Open Spaces asset management system.

The purpose of this is to give Parks Officers the ability to run a comprehensive report, which would attach every asset associated with each public convenience into a usable list that could be provided to contractors when the toilets contract was going out to tender. This would give prospective contractors more information to help them work out their pricing schedule more easily.

## Road Safety Coordinator Update

(Information prepared by Robyn Blackburn)

R800-005-03

### NLTP – Road Safety Education delivery 2024-2027

The Government Policy Statement (GPS) on Land Transport 2024-2034 has been released and across the entire NLTP, NZTA are looking for greater efficiencies. In terms of direction relevant to national road safety promotion, it states that *'investment will go towards road policing and road safety promotion to ensure an appropriate level of enforcement while promoting safer driving, as well as a nationally consistent and coordinated road safety promotion'*.

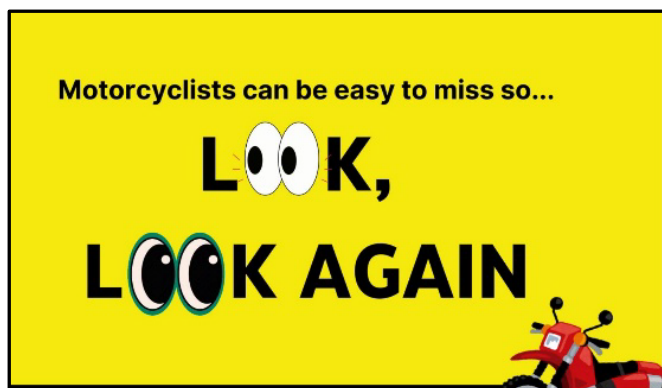
While this means there has been less funding allocated to Road Safety Coordinators across the Motu, the requirement for road safety promotional advertising to be managed nationally has taken away some of the costs for local road safety delivery.

Most of the successful programmes and activities that have been operating in Marlborough for several years are still able to be delivered such as RYDA, Ride-On Cycle Skills, Driver Licence programme, the child car restraint checking clinics and some funding for motorcycle and drink driving activities.

### Motorcycle Safety

September is Motorcycle Awareness Month (MAM) and Road Safety Coordinators from Marlborough, Tasman and Nelson councils worked together to deliver a social media campaign and an activity book for young people (co-ordinating with school holidays).

The Picton Library/Council customer service team designed and delivered a digital display with several slides showing continuously on their screen.



The customer service team at the Council's main district administration building developed a display in the main reception area.

The Marlborough Motorcycle Road Safety group are still meeting regularly and looking at ideas for engaging more with motorcyclists to 'spread' the staying safe message. A recent presentation on bike airbag technologies attracted over 25 riders.

### Marlborough Clued-up Kids

Planning for the 2024 event at Brayshaw Park is well underway with the Council's support to develop and print take-home information and assessment booklets, as well as having several departments taking part in the day. These include Emergency Management, Harbours and Road Safety.



## Motorcycle Awareness Activity Book

We all need to "Look Again Look Again" for motorcycles.

Whether we are travelling in the car with family and friends,  
riding our bicycles, or crossing the road.



On each page we've hidden our eyes  because we have to "LOOK AGAIN" at all times to make sure we see motorcycles. Can you find the  hidden on each page?



Record no: 24226195