

**MARLBOROUGH
DISTRICT COUNCIL**

Annual beds planted for spring display

Information Update
Assets & Services, Property and Community Facilities
Department
9 July 2024

Contents

Marlborough Roads	1
Local Road Asset Management Report – July 2024	1
NOC Monthly Activities (May Report)	1
Operations Report (May Report).....	2
Marlborough Road Activities	3
Stakeholder and Communications (May Report)	5
Road Safety (May Report)	6
Marlborough Roads Recovery Team Update – May 2024	7
Living Safely	7
Environmental Highlights	8
Design Summary.....	11
Design Issues and Challenges	11
Construction Summary.....	13
Financial.....	13
Programme	14
Progress Photos	15
Rivers and Drainage Section – Activity Report.....	16
Wairau River	16
Wairau Floodplain and Tributaries	16
Drainage.....	17
Floodway Reserves.....	18
Picton, Sounds and Awatere.....	18
Investigation and Miscellaneous	18
Gravel Extraction.....	23
Quarries	24
Waste Management and Minimisation – Activity Report.....	26
Contract # 2021-077	26
Blue Gums Landfill	29
Hazardous Waste/Reuse Centre	29
General.....	30
Services and Operations	31
Education Report – July 2024.....	31
Parks and Open Spaces Activity Report	32
Blenheim Parks	32
Renwick Parks	38
Awatere and Flaxbourne Parks.....	38
Picton Parks	39
Northern Marlborough/Sounds.....	41
District Public Conveniences	42

District Cemeteries	43
District Memorials.....	45
Walking and cycling	45
Trees	46
Ecological reserves	46
Playgrounds	47
Policy and planning	49
Road Safety Coordinator Update.....	50
Sport & Recreation Community Activity Fund.....	52
Property and Community Facilities - Projects	55

Local Road Asset Management Report – July 2024

(Information prepared by Amanda Smith)

R800-007-02

General

We are at the end of the financial year. A lot of work has been achieved in the last few months and it is great to see all the programmes of work completed.

Since January, Marlborough Roads has had two vacancies within its Network Team. In early June we filled one of the Network Manager roles by promotion of our Network Technician, Fern McGaw. An offer has been accepted by a very experienced senior engineer for the other Network Manager role and they will commence in September.

There was a high calibre of applicants for the Network Technician role. We are hoping to have a full Network Team with a good level of experience on board by October 2024.

The Marlborough Roads Joint Venture was awarded the Collaboration Award at the NZ Health and Safety Safeguard Awards held in Auckland in June. This was in recognition of the work done by the team working collaboratively with the wine industry to get through harvest and the construction season with as much co-ordination as possible.

Financial Commentary

Our roading programme has had substantial cost pressures over the last 12 months mainly due to inflation and customer demands. We are forecasting expenditure may slightly exceed budget within the subsidised programme.

Indicative funding levels for our continuous programmes have now been released by NZTA. Our team are preparing the programmes of work to align with the budgets for the next three year period. Councillors were advised at the recent LTP meeting of the reduction in operational funding of \$5.5m. This will mean the proposed 3 year programme of replacement of concrete street light poles will be pushed out. Once the team know exactly what the affects this will have on the programme this will be reported back through the committee.

As advised at the LTP meeting it was very pleasing to see all the funding in the Pothole prevention work category was funded. This means we will be able to preserve our asset at current LOS.

NOC Monthly Activities (May Report)

Summary from Contract Manager, Grant Bennett

The end of the first funding block has come around quickly and the team are prioritising the work to meet budgets as closely as possible, which is a credit to the whole team.

A good news story with the CRM process continuing its positive trend and the key indicators, for example potholes having halved from this time last year. This shows great work by the team and pleasing to see the results of the last three years starting to be reflected.

The grape harvest went smoothly this year with half the spills from the previous season. The strong collaboration with Wine Marlborough, NZTA/Waka Kotahi, NZ freight industry and ourselves has been extremely effective in making this a real success.

The Truck Roll Over Prevention Group presented to the Governance Board on its investigations and recommendations for improvements and industry direction. This was received very well with the board giving the green light to pursue some of the recommendations identified. Well done to the team involved, working together for the betterment of the network and industry to help keep our staff and customers as safe as possible on our network.

The teams are well entrenched in the planning for the 24/25 season with a large renewals season on the cards again. We haven't seemed to reflect too much on the great success we had in our last season, hitting all our renewal targets.

A Last Planner workshop is scheduled for the start of July to look back on what has been completed over the construction season and opportunities for improvement. This will support the team in the growth and delivery of the coming year.

Collaboration is the key to success and our large network increases the importance of investing early and clear planning.

The winter response teams have been meeting to ensure we are set up and ready for action when needed. A cross boundary meeting with Tasman/Nelson was held to work through areas of efficiency and communication.

We are looking forward to welcoming two new staff members over the coming months and introducing them across the contract once they have landed.

Operations Report (May Report)

Summary from Operations Manager

The previous month's completion of local road culvert renewals allowed for resources to focus on High Shoulder as part of the pre-reseal repairs for the 24/25 season.

A good amount of grading was completed this month with 173,628 SQM, with a particular focus on the French Pass and Kenepuru areas.

Surface water channel clearance was also a focus this month, especially along Queen Charlotte Drive and Port Underwood Road.

A disconnect in programme submission timings has been identified which has been rectified, which will improve accuracy in reporting moving forward.

Monthly Programme Summary

The focus this month is to confirm the programme and have lump sum and renewal activities approved in RAMM, to the end of June 2024.

The Q4 June focus;

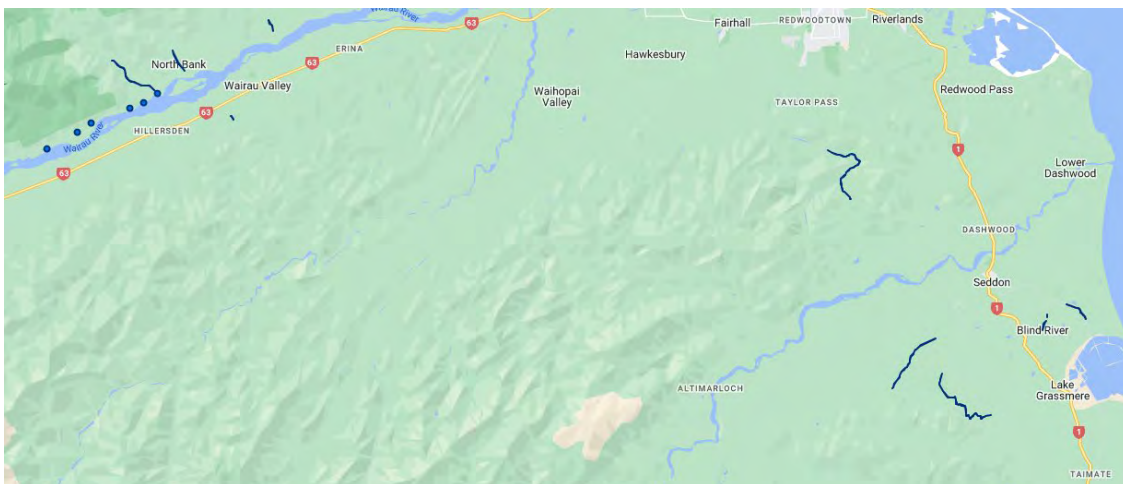
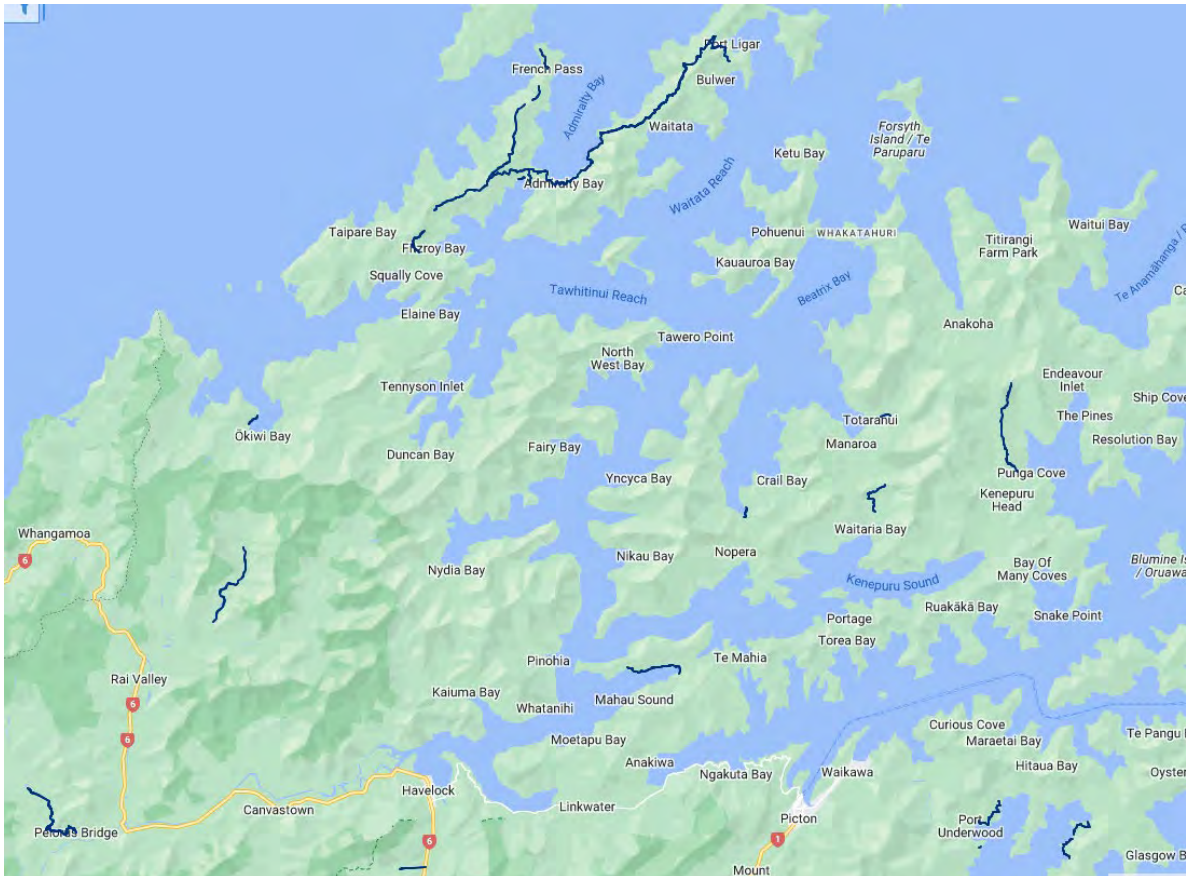
- Completion of Footpath and Cycleway renewals (asphalt and concrete programme)
- Unsealed roads preparation and wearing course
- Drainage maintenance
- New signs
- Barrier repairs
- Structural maintenance, component, and renewals (for jetties and boat ramps)
- Preparation of RAMM categories and dispatches for the 24/25 season
- Reviewing funding and allocation for the next three-year NLTP

Marlborough Road Activities

Maintenance and Operations

Work has begun on programming for the next three-year period. Programmes are being put together based on the Indicative Funding Allocation indicated by NZTA. As we await final approval of these budgets, we will begin on drainage renewals and continue with our current unsealed road programme over the winter.

The Marlborough Roads JV have really been putting some attention into the unsealed network over the last few months. A big effort has gone into metalling the outer sounds roads, particularly in the French Pass area. This has had some positive feedback from the community. Efforts are now being focussed in the Kenepuru and Northbank area. The map below shows roads that have recently had unsealed surface renewals.



As part of a nationwide project, roading asset management data is becoming aligned under an Asset Management Data Standard (AMDS). This work has two components:

- Migration of all asset data from our current standard to the new national standard
- Development of a national map of all roading networks, including footpaths and cycleways.

This work will allow for consistency across the country's asset data and the way in which we report this data.

The asset data migration for MDC is scheduled for September to align with the State Highway data migration so that the team don't have to work between two different standards. Work to clean and align data is underway. This is requiring additional resourcing from within the NOC and from external consultants.

The network mapping is also underway and whilst not being as demanding on the team's time, is requiring additional resourcing.

The four-pilot area implementation of the New Zealand Guide for Temporary Traffic Management (NZGTTM) has reached the end of funding from NZTA. The Marlborough Roads JV team have been developing risk-based approaches to how they carry out their maintenance and renewals work rather than immediately applying the Code of Practice for Temporary Traffic Management (COPTTM). It is hoped that the risk-based approach will lead to safer and more innovative ways of carrying out work on and around our roads.

As of October 2024, all work on State Highways will be carried out using the risk-based approach of NZGTTM. How this will be carried out over the local network as well is being considered now to ensure consistency for the Marlborough Roads team, contractors and road users. This will be reported at a future Committee meeting.

Unsealed Road Renewals locations (also Awatere Valley Road)

Whale Trail

The Tuamarina section has been completed and opened to the public.

We are awaiting decisions around funding for the whale trail urban routes through Blenheim and Picton. As soon as we have confirmation of decisions that will be brought back to the committee.

Licenses to Occupy (LTO) will be raised and issued by NZTA to the Whale Trail (MKTT) to cover clip-on bridge structures maintenance inspections and specified maintenance on the Wairau Bridge (and Waimea Bridge once built) sections of the Whale Trail.

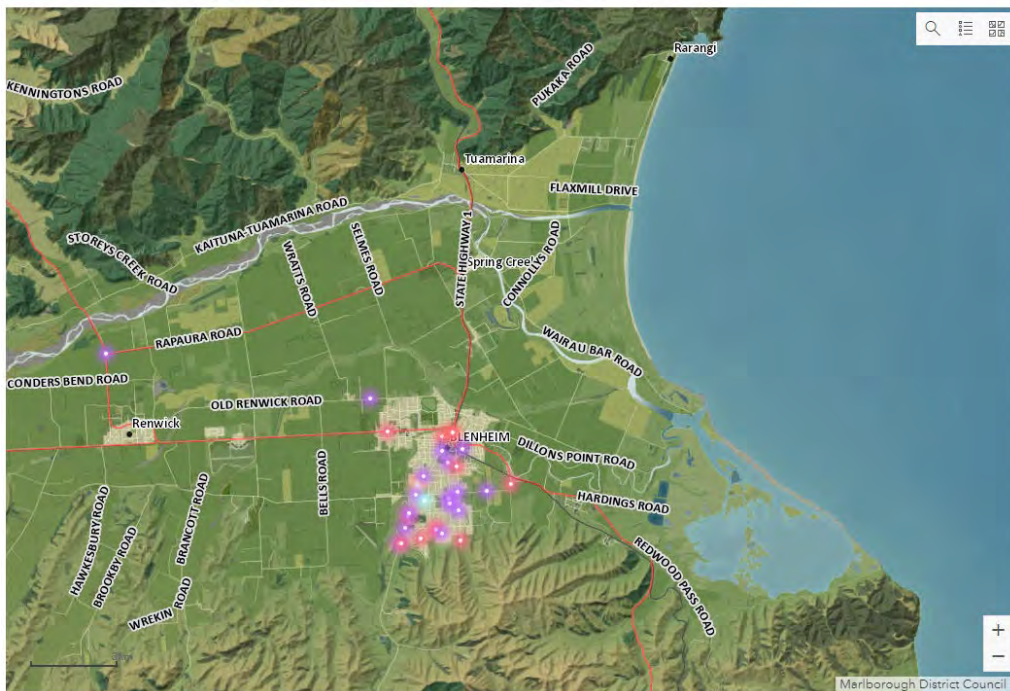
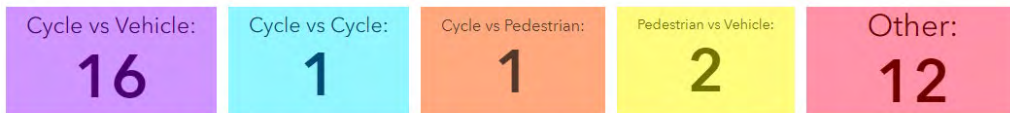
French Pass Boat Ramp

Replacement of the boat ramp had the concrete poured on Thursday 27 June. The work had to be scheduled to coincide with low king tides. Fortunately the weather was perfect on the day. The boat ramp will be closed for a week to allow time for curing and will be back open to the public in early July.



Figure 1 Concreting just completed on the French Pass Boat Ramp

Bike/Walk Crash and Near Miss Dashboard – July 2023 to March 2024



Stakeholder and Communications (May Report)

Summary from Communications Manager

Summary for May

The total number of customer enquiries in May was 59, down on the previous month with 82 CRMS in April 2024. Enquiries were also down when compared with May 2023 with 111 CRMS. Of the 59 CRMs, 93% were for local roads and 7% for State Highways, with 100% resolved.

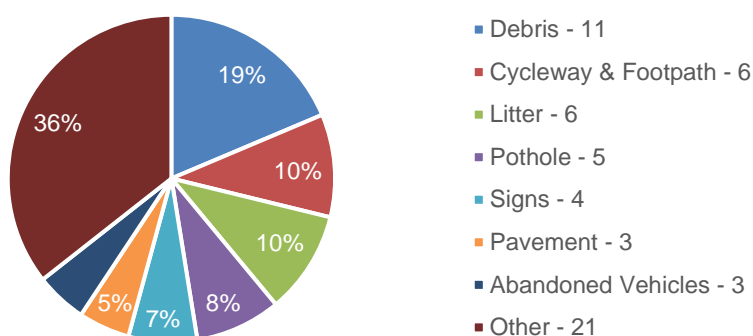
The highest number of enquiries were for debris with 11 CRMS in May 2024. This is an increase on the previous year, with four debris enquiries in May 2023. This can be attributable to residents being more aware to contact us for their removal and previous weather events making anything to do with drainage top of mind especially during the wetter months.

There was a significant decrease in abandoned vehicle enquiries in May 2024 with three compared to 13 in May 2023. This follows a high number of abandoned vehicle CRMS in April 2024, reflecting a change in timings for harvest with workers leaving the area, earlier than previous years.

Also of note, was the decrease in pothole enquiries with five this month, compared to 10 in May 2023. Reflecting the overall state of the network and the teams work in this area.

Please note, descriptions are as per CRMS categories.

Customer Enquiry Type - May 2024



There was one complaint received in May 2024 regarding the traffic management on SH1 Elevation, this was forwarded to the relevant team and responded to within the timeframe required.

Sixty-five customer call backs have been completed year to date against a target of 25. Two callbacks undertaken in May both gave five out of five for customer service received from the MRJV Team (with one being very poor and 5 being very good).

There was one letterbox drop to a total of 30 residents and eight Antenno and Alerts sent in May 2024 to notify residents of upcoming works.

Future Month Focus:

- CSCMP review and update completed
- Significant impact work communication requirements refresher training
- Communication planning for 2024/25 construction season

Road Safety (May Report)

Monthly Summary from Network and Road Safety Manager. Details and trend information is included in the Quarterly reporting.

Local Road Crash summary:

The Contract has had two DSI crashes on the Local Road network recorded in CAS for May 2024.

Marlborough Roads Recovery Team Update – May 2024

Big focus for May was the preparation of Kenepuru for the winter months. We started the pre-winter maintenance package in that zone including prep and seal of previous completed works, pothole works around our recovery site and bund tidy up and removal. This work was overall well received by the community and has significantly improved the ride on Kenepuru Road. Some key projects like Torea Wall and Cullen Point are currently underway, and several sites on Queen Charlotte Drive were completed or are nearing completion.

It was a big month for the design hub team with multiple design packages being delivered for final review. Some of the remaining phase 2 packages required some effort and direction from all parties for progress and the team has managed to get a direction forward for all these remaining packages now.

Effort has been put into the handover of zones and sites to BAU. The zonal handovers have been prioritised with three zones fully reviewed by BAU and were notified to Marlborough Roads for acceptance, this process has started for the two other zones not included in phase 3. The first BAU reviews of complex sites have also been undertaken in the month of May.

Together with NOC BAU we have done an accurate review of the truck rollover risk we have in our region, outcomes and next steps were presented to the NOC JV Board meeting on the 28th of May. The board endorsed the work we have done to date, has approved for us to start implementing the quick wins and develop longer term solutions further together with Marlborough Roads.

There has been a significant shift in the phase 2 programme longest path. A way forward for a rockfall site on Northbank Road generated some programme changes. Future opportunities have been identified and could potentially be realised depending on the final design solution that is being selected from the optioneering process.

The funding application for phase 3 was finalised and submitted at the end of the month. We understand that the aim is for MDC to confirm their available funding on the 24th June, with NZTA confirmation during the board meeting in August. In the meantime we have received the verbal approval from MDC to continue phase 3 design work funded by remaining phase 2 funding. We will start putting minor works procurement packages together in June/July for approval to commence the physical works package.

The design team has worked through the Level of Service guidance for phase 3 and became apparent that the details as provided in the MSFAS is not fit for purpose in certain areas, and MDC guidance around additional restriction due to this level of service will be required. Design Hub have developed a proposal which will be discussed in more detail beginning of June. Finalisation of this document is key for continuation of a large phase 3 simple site design, and all complex site design scope.

People and Culture

There are still minor concerns within the team about PMO procurement uncertainties for phase 3 and therefore timely confirmation from MDC/NZTA around the procurement confirmation for the PMO would be appreciated to ensure the project remains resourced appropriately. The team is planning as if phase 2 works were to flow into phase 3 works later in the year. A programme and written approval from MDC to proceed works under phase 2 funding has been requested.

We are now organising fortnightly lunch & learn sessions at our Linkwater offices for the delivery team members. During these sessions, team members will present to the wider team about a certain topic to share knowledge and to assist with the training and competency of the wider team. These sessions are great platforms for on-the-job learning for our team members.

Living Safely

H&S processes within the JV will move over to Living Safely v2.0 from the 1st of July this year. Although the general management of H&S will not change much through this new version, there will be more focus on Critical Risks and Critical Risk Conversations (CRC's) will be implemented from then, while the requirement

for LSA's will be removed. These are guided and more in-depth conversations with site teams focussing on Critical Risks.

Subcontractors

In the month of May, we have rolled out the online induction to align with Living Safely Manual. This has been met with positive feedback by subcontractors and the project team themselves. A number of items of plant across three sites were identified as having expired, where these were able to be re issued on site this was done, in a couple of instances the plant was either locked out or removed from site. Continuing education with all that these need to be checked regularly by the subcontractors themselves and by our MRRT on site visits. The plant induction spreadsheet is being reviewed and each contractor being contacted to confirm what plant is on site.

Two subcontractor inspections (annual) planned for the coming month. We provided 18 inductions to new workers as required. We also reviewed the level of risk control and worker competency was appropriate for the works being undertaken.

Injuries and Incidents

During the month of May, we had one incident recorded.

Leadership Safety Actions

In May, we had 64 leadership safety actions logged, with a target of 49. Leadership Actions are a good way of demonstrating the dedication and commitment our team has towards the Health, Safety, Quality and Environmental considerations for workers in the field. This is a positive reflection of a good safety culture within the Marlborough Roads Recovery team.

Environmental Highlights

Highlights:

- Sites visited by the Environmental Manager during May included the Moenui Box Culvert, Pottery Place / Tepuia Heights retreat, and the Onamalutu Road scour repair for the brush wall installation.
- All sites showing good knowledge of the environmental risks at their sites.
- The mussel shell initiative has been submitted to the VINCI (HEB home org.) global environmental awards, awaiting the outcome which is due later this year.
- The retreat at Tepuia Heights (QCD-561-02407) re-commenced at the beginning of the month following the stand-down period, with an Iwi monitor from Ngāti Kuia present.



*Site completed on Queen Charlotte Drive at RP 07369 – 30 May 2024



MSE head wall built up at the Moenui box culvert installation site – 24 May 2024



MSE head wall built up at the Moenui box culvert installation site – 24 May 2024



Retreat and new culvert installation on Queen Charlotte Drive, near Tepuia Heights – 23 May 2024



Brush wall completed at the Onamalutu Road scour site during – 30 May 2024.

Design Summary

Design Issues and Challenges

Phase 2 overview

As of end May, complex designs for 11 out of the total of 57 faults are outstanding, with the last packages being closed out in October 2024. A big push is underway during June to progress the remaining Phase 2 sites with another two packages being closed out in May.

Phase 3 Complex Sites

A draft high-level programme of delivery has the first group of Complex sites being prepared for tender in July 2024, with another four tenders (grouped sites) to follow. Inputs are being staggered to:

- provide time for an industry briefing,
- allow the industry to respond given their previous success (and resourcing commitments),
- allow the Design Hub staff adequate time to prepare the various site briefs, and
- provide time to develop the tender documentation and assessment criteria.

Development of the ITT for Phase 3 is underway. A strong weighting on NPA scoring has been included.

There was a good response to the Design Hub (DH) request for secondment applications, with 13 candidates put forward from across seven organisations. DH have shortlisted and interviewed suitable candidates and put forward their recommendations for approval. Unfortunately, we have not been able to find the one engineer with all the required skills and availability, we therefore propose two additional Design Hub members, one in a full time and one in a part time capacity. This proposal is currently under discussion and we hope to have it resolved and appointments made by the end of June.

Simple Site Repairs

Simple site progress is now being monitored.

Progress has improved, with geometrics items starting to be completed with more consistency. Our full time geometrics secondment has had his contract extended to the end of the year. There were some issues with the availability of the part time seconded, however these have now been resolved and MRRT getting the full 16h minimum time commitment that was agreed upon. That said, the urgent focus on completing the LoS documentation and agreeing assessment criteria has taken resource away from the specific simple site designs over the last week and into June.

To date two simple site repair proposals have been submitted.

- SR-315 has been submitted and approved.
- DP-237 has been submitted and rejected.

Upcoming submissions are:

- SR-013 – awaiting stormwater assessment. This has been awarded to Davidson.

Level of Service Document Development

Design Hub have made good progress with the LoS, Revision 4.

A key focus of the team has been around efficient Geometric Design, and a map, LoS Design and Check Vehicle Map, has been developed to communicate the proposed design vehicle and check vehicle for the different roads in the Sounds. Broadly speaking, design vehicles will stay in their lanes while traversing corners, while check vehicles can take up both lanes.

Currently the Design Hub have suggested design vehicles based on:

- Existing HPMV routes
- Existing vehicle length restrictions (QCD)
- Where the MSFAS identifies potential vehicle restrictions
- And, in a few cases, knowledge about knowledge about existing corners or narrow sites that will restrict vehicle size

However, in carrying out this exercise it has been discovered that there are implications to the choice of design vehicle that need MDC buy-in. For example: Do vehicles larger than the design vehicle require a permit or a pilot vehicle? Permitting decisions are made by MDC, not the LoS guidelines, but the issues should inform Design Hub recommendations for the design vehicle for a particular road.

An example of the where the LoS document needs to provide clarity is Tennyson Inlet Road. For this road, Design Hub have assessed that some of the existing switch backs would not allow a 12.6m truck or car + trailer to stay within their lane. This raises the query of whether all of the proposed repairs should be for the 99th percentile car instead? Or should repairs be designed to a higher standard to take into account that the road is frequently used by cars with boats, and it is a potential area of further development?

These scenarios and the LoS document were discussed in the Design Hub Leadership catch up on 4th June and Design Hub are now working on providing additional detail and clarifying the scope of where conflicts might occur. It is crucial that the LoS guidance documents is finalised and able to be shared with the Phase 3 optioneering briefs.

Construction Summary

Progress Update

Overall outstanding Priority 1 faults down to 31 remaining to complete. Peak construction remains in QCD Zone with a number of complex sites well underway or nearing completion.

Construction Issues and Challenges

Majority of our sites are being completed with little problem. Zone Managers continue to show a good presence across the work sites, resulting in any issues that crop up onsite being viewed as no more than BAU.

Subcontractor Performance

All subcontractors performing well. No current urgent issues with our current subcontractors on the panel. Only change in performance tracker for this month being the inclusion of Glacier Holdings.

Financial

The May claim reflects increased construction activity for the month as works ramp up on new sites throughout the recovery area.

Cost Summary

The May 2024 claim totalled \$2.398M with areas of spend can be seen in the pie chart below. During the month there was constructional spend of \$1.541M.

The major construction works undertaken this month by zone were as follows:

QCD \$321k, Kenepuru \$683k, North-bank \$166k, Port Underwood \$159k, Pelorus \$38k and Awatere \$20k.



Remaining Budget

With the phase 2 funding now confirmed the programme in total has approximately \$43.934m of budget remaining to cover both physical repairs, design, client-side costs etc.

Programme

Progress Update

Critical sites overall remain reasonably steady. The longest path has now been taken over by the Northbank Rd Rockfall site. A methodology for continuation of that site was developed through which now includes the review of two last options for this site. A construction period post design completion has now been included in the programme, previous considered rock scaling options were included in the design programme. These changes caused for this site to now be the longest path on the project.

Communications & Engagement

The weekly roading recovery e-newsletters continue to form the base of the regular MRRT communications, supported by updates on the Marlborough District Council's (MDC) CDEM Map, and Antenno.

In May, the e-newsletters included information regarding the closure of Dalton's Bridge to heavy vehicles, planned closures on Maungatapu Road and Dalton's Bridge, and progress on sites including Torea on Kenepuru Road and multiple sites along Queen Charlotte Drive. Further information was given regarding works in the Kenepuru, Northbank, Waihopai, Pelorus and Port Underwood areas.

Notification of the extension of the transition period on Kenepuru Road, until a road safety audit and works at Torea and Water Tank slip are completed, was also provided in the newsletter on 30 May.

Customer interactions have decreased significantly from the previous month with eight enquiries in May, compared with 22 in April. These customer interactions have been recorded and will be shared with MDC for their record.

Of the eight enquiries, the majority were regarding the Kenepuru Zone with six or 75% of enquiries. Five of these were regarding access, and one from The Portage Hotel for a timeframe on Kenepuru Road opening to the public.

One enquiry, concerning the Queen Charlotte Zone regarded plans for the installation of a culvert on Moenui Road.

One final enquiry was concerned that road users were not adhering to the traffic lights at RP17 on Northbank Road. Following this enquiry, the traffic management and design teams investigated options at this site. The site continues to be monitored and increased communications along with stakeholder engagement on the reasons for these lights has been undertaken.

This month there was one media story directly relating to MRRT, regarding the closure of Dalton's Bridge to heavy vehicles, as a result of a Council media release. There were further stories on the Council's long term plan submissions, future spending on roading repairs in the Sounds and marine infrastructure.

In May, the Council featured a story on recovery repairs on Queen Charlotte Drive in their Weekend Express pages. This story also featured in the Marlborough Matters newsletter and is planned to be published on their Facebook page and the Blenheim Sun Council page in June.

The NZTA Waka Kotahi Senior Content Producer visited some Queen Charlotte Drive sites on 22 May to interview Steve Murrin, Rob Löbker and Phil Leslie of Leslie Brothers Contracting. The resulting video to be produced in June, will be published on NZTA Waka Kotahi's social media channels and shared internally.

An article, led by the Design Hub Team has been developed for the New Zealand Geographical Society's June publication. The article focuses on the learnings from the Marlborough Recovery Project, which could be used in other storm recoveries.

Engagement with all eight Te Tau Ihu iwi on the proposed Torea Barge Ramp was undertaken this month, with a group hui planned with the three interested iwi, Ngāti Kuia, Te Ātiawa and Ngāti Toa Rangatira for Monday 10 June.

Progress Photos



Rivers and Drainage Section – Activity Report

(Information prepared by Andy White, Frank Westergard, Gregor Punzel, James Mills-Kelly,
Duc Nguyen, Geoff Dick) R700-014-01

Wairau River

Flood Damage

The main outstanding flood damage repairs are the rock rip-rap top up work along the full length of the managed Wairau River channel below the Waihopai River confluence. This work has been delayed by rock supply with work completed to date being either essential emergency repairs or rubble holding works including at the Diversion.

The total estimated tonnage of armour rock still required is about 55,000 tonnes including the large Diversion repair at the mouth. Final schedule checks are underway. Once complete the work will be tendered in up to four packages over the next three months.

A large proportion of the rock will need to be resourced from private quarries likely including those at Barracks and Brookby Road, and from outside the Region. With stripping of the upper extension bench and haul road construction complete at Pukaka Quarry rock is again becoming available but we will need to consider ordinary maintenance and capital upgrade requirements therefore Pukaka rock armour is unlikely to be used in the Flood Recovery Programme.

Ground investigations are complete adjacent to the section of stopbank where concerning seepage occurred at England Street, Tuamarina pocket during the both the 2021 and 2022 flood events. Repairs/minor stopbank upgrade works are planned for this summer following receipt of the geotechnical investigation report and repair design.

Channel maintenance works

Channel realignment works have been completed at Barnetts and either side of the SH6 bridge at Renwick to rework large gravel deposits and reduce the risk of further bank erosion. These works were completed before the recent spate of wet weather and will be followed up with targeted gravel extraction from 1 July.

Wairau Floodplain and Tributaries

Upper Ōpaoa - Behind Lansdowne Park to Waipuna Street

A report has been received of a minor gravel blockage in the Upper Ōpaoa channel in the vicinity of the Rapaura sawmill. This will be inspected and attended to as appropriate.

Tuamarina

Recent inspections of the Tuamarina River by the Bush Road bridge show that the willows on the SH1 side are beginning to encroach greater than ideal into the main channel. Clearing maintenance will be scheduled as necessary.

Construction of the section Whale Trail upstream from the Bush Road bridge is largely complete except for the new bridge crossing downstream of the railway bridge. The trail through this section is within the Tuamarina floodway and so care was required to both limit future flood damage and loss of floodway capacity.

Are Are Creek

Willow clearing is planned for Are Are Creek both upstream and downstream of the Kaituna-Tumarina track. Vineyard owners have contacted Rivers staff re concerns that willow growth is exacerbating bank erosion risks.

Ruakanakana Creek (just downstream of Waihopai intake)

Minor channel maintenance was completed upstream of the SH63 bridge to ensure a steady inflow of water. The Wairau intake has not required any work for several months now.

Wither Hills

The recent rainfall should assist pasture recovery after a very dry summer and autumn period.

Drainage

Lower Ōpaoa River

The autumn weed cut is about 50% complete with our operator currently waiting for the river to drop and clear to resume work. Safety paperwork requirements and a damaged drive wheel motor have delayed this autumn's cut. A two-week window of settled weather conditions should see this job complete with hopefully the new weed cutter boat arriving in time for the scheduled spring cut that starts 1 December.

Taylor River: Town Area

Maintenance dredging from opposite the now demolished old Marlborough Clubs building to Beaver Road is complete including rock stabilisation of the north bank side. Approximately 1000m³ of sediment was removed returning flow depth and channel capacity. The berms have been levelled and sown to grass.

A request has been received from the owners of 13 Grove Road for an observation deck to be constructed over a section of stopbank that remains in the owner's title. The request will be considered, including the impact on Council's ability to both maintain and upgrade the stopbank in future. The land under the stopbank is subject to a designation for floodway purposes giving Council ability to control development but also requiring Council to compensate the owner by way of purchase if the owner's aspirations are significantly restricted.

Stormwater Pumping Stations

Alabama Road etc

The diesel generator at the Dry Hills pump station has been serviced. Minor electrical upgrades have also been completed to a number of pumps in the network.

New weedcutter boat

Construction of the new weed cutter boat hull is underway with progress reports being received. A trip is planned to Christchurch to view the build work to date and work through any design issues related to later mechanical or hydraulic fitout.

Drainage Maintenance

- The autumn drain spray programme is complete.
- The Riverlands Co-op drain and Sandhills outlet have been weed raked - about 3500m in total.
- Floodgate inspections plus follow up maintenance as necessary is underway,

Floodway Reserves

Management of the various leases and licences of floodway reserve land continues with one discharge licence, one lease renewal and three new leases/licences being managed through APL.

Picton, Sounds and Awatere

Rai River

Two site visits have been made to farms in the upper Rai Valley to view and discuss stream management issues, a pre works start meeting and view ongoing river management works still subject to resource consent application.

Pelorus River

Marlborough Roads have given notice of intended extraction from a consented site just upstream of Widles Island. Completed well, this extraction should provide some limited relief to the opposite landowner from ongoing bank erosion. A start up site visit is planned.

Waikawa and Waitohi Rivers

Staff are working through the requirements for a planned nine lot residential development in Waimarama Street, Waikawa including the requirements for a section of upper Edes Drain that appears to have been diverted around 1970, likely without formal approval.

A meeting was held with KiwiRail to discuss what further work was required to reinstate the section of stopbank adjacent to Dublin Street and the Waitohi Domain following the cancellation of the IREX project.

Investigation and Miscellaneous

Capital Works

Contract 22-216 Town Branch Upgrades – Connor and CMP Blocks

Work completed to date includes earthworks for the realigned section of drain, backfilling of the redundant drain and culvert construction from Connor Close to the new section of drain. The bridge designs are being finalised and construction is expected to begin in July. Widening of the drain eastwards is currently being hampered by fluctuating water levels in the drain however there is progress as weather allows.



Figure 2 –Railway Drain Culvert bedding preparation for the final lengths of pipe.



Figure 3 –Town Branch Drain realignment earthworks complete and landscaping underway.



Figure 4 –Town Branch Drain widening underway.

Contract 22-223 Wairau Stopbank Realignment: Upper Conders

The works have experienced delays due to weather and river conditions but are now structurally complete and connected to the existing stopbank, with final topsoiling, grassing and tidy up to be finished by early July.



Figure 5 – Conders stopbank gravel core of new stopbank completed in late May.



Figure 6 – Conders stopbank filter and facing layers completed mid-June in wet conditions.

Contract 24-007 Quarry Drain Culvert Extension

These works were completed by Gills Construction in April. The roadside has been capped with gravel and left to settle before next year's programmed upgrade of the intersection of Pukaka Road with Pembers Road.



Figure 7 – extension and backfill of Quarry Drain Culvert complete.

Peninsula Road, Spring Creek

Geotechnical assessment of stopbank LW05 beneath Peninsula Road, commenced in mid-May and was completed within two weeks. This work has confirmed the presence of longitudinal cracking along the length of the bank to a depth of approximately 2m. This work will inform the design options for repair and remedial works planned over the next three years – early indications are that the bank will need to be fully reconstructed, incorporating a new raft foundation, as anticipated for in earlier project planning.



Figure 8 - cracking and voids within stopbank



Figure 9 - recording cracks within stopbank



Figure 10 - vertical cracking



Figure 11 - vertical cracking



Figure 12 - vertical cracking

In response to feedback at the Spring Creek community meeting in June, work was accelerated on the river true left, to reduce pressure at the toe of stopbank LW05. Significant progress has been made with willows removed and the inside berm reshaped.



Gravel Extraction

The 2023/24 gravel extraction programme is complete with several contractors now looking to access gravel early in the new extraction year starting 1 July. One of those companies was Fulton Hogan where a permit for 6500m³ was issued early to extract part of a beach immediately downstream of the SH6 Wairau River bridge and complement Council's channel management works.

Briefly:

- In the Wairau River below the Waihopai River confluence a 90,000m³ extraction programme is proposed unless amended following analysis of new survey and an updated programme recommended to the Assets and Services Committee. Initial permits will only be issued for about half the above programme as a precaution.
- We are also awaiting analysis of recent lidar survey data. Anecdotal evidence is for declining riverbed levels in that area affecting riverbed intakes. A policy decision will be required to balance access to the gravel resource vs any environmental effects of future extraction.
- The Rivers Team is assisting with the setup of gravel extraction from the Upper Wairau via Keith Coleman Lane, Wairau Valley township. Managed well this should have some river management benefits.

Quarries

Pukaka

West Knob continues to produce small armour rock and crushable byproduct. However, reduced construction activity over the winter has resulted in the floor of the quarry becoming full and production activity slowing.

The permanent access road to the top of the quarry has been completed and development of the quarry extension is approaching completion. Removal of overburden at the top of the quarry continues at the east facing flank to expose the rock seam on two levels ready for production to commence.



Figure 12 –Pukaka Quarry haul road completed.



Figure 13 – Pukaka Quarry haul road switchback.



Figure 14 – Pukaka Quarry upper edge of rock seam being exposed for production.

Waste Management and Minimisation – Activity Report

(Information prepared by Mark Lucas and Georgie Sullivan)

W300-006-008-09

Contract # 2021-077

Wheelie Bin/Kerbside Collection

There have been over 35,000 bins and 2,500 crates delivered during the delivery phase of the project. This equates to approximately 18,500 entitled properties. As a result of people wanting to change to larger size bins, we ran out of 240L bins but more were ordered and delivered before the end of June.

All the trucks arrived whilst the bins were being delivered and are sign written. As of 1 July, they have been out and about collecting waste and recycling around the district.



Figure 1 – Side loader truck for kerbside collection



Figure 13 - Side loader truck for kerbside collection

Remote Transfer Stations

The first five sites, Awatere Valley, Ohingaroa Quarry, Rai Valley, Waihopai Valley and Ward are now operational.



Figure 3 Awatere Valley Remote Transfer Station during construction

We changed the design of the Ward site to fit the infrastructure that was already there, this reduced the construction costs by approximately 50%.



Figure 4 Ward Remote Transfer Station

Discussions have started with Marlborough Lines to lease the remainder of the site for their Solar Farm.

From the end of July, we will be looking at confirming the five other locations and once we have firmed up on the location, we will be completing community consultation for each site. All the new sites will require Resource Consent.

Transfer Stations

All the new pricing has been updated and the new contractor is settling into the sites. A general tidy up of all the sites will begin with the new contractor. We have adopted the philosophy that these areas are a place where we collect waste and recycling but they do not have to look like a tip. As a part of this clean up, new signage and general maintenance is planned to bring them up to an acceptable standard and will be completed over the 2024-2025 year. This will be completed within the existing maintenance budgets.

Recycling Centre

By 1 August we will be recycling flat glass at the centre. Flat glass is glass from windows. Initially this will only be available for commercial customers but will be opened up to the public once we have the system and processes tested.

The Recycling Centre becomes a storage site for the glass and then it is collected and sent to Christchurch for recycling. We already have the bunker system on site so there have been no set up costs. There are also no costs to the rate payers as the commercial identities have the relationship with the recycler. The Council receives a monthly administration fee for the use of the site and reporting therefore this is cost negative to the rate payer.

We do not have any records of the volumes of flat glass that currently go to the landfill each year so the diversion rates to this project will only be identified over this year.

The first glass that has been recycled, as a result of this scheme, is from the old ferry terminal building in Picton. This was taken directly to Christchurch because of the volumes involved.

All the weights will be recorded and will be monitored with other waste diversion projects.

Blue Gums Landfill

Stage 9 Construction

This construction is now all but complete and is ready to be used. There are some storm water drain works that need to be completed but the weather has held this up. The project has been completed under budget and only a little over the projected finish date. This extension of time was as a result of weather hold ups.

The total cost is still being finalised but it is approximately \$6m and the life expectancy of Stage 9 with the current volumes is six years.

Waste Levy

During this year's budget announcement, the new coalition government stated the waste levy will increase by \$5.00 per tonne each year until 2027. That will take the levy from \$60.00 per tonne to \$75.00 per tonne by 1 July 2027.

The upside of this is that they also pass the Waste Minimisation (Waste Disposal Levy) Amendment Act 2024. This act came into effect on 1 July this year. This amendment will allow Council to apply for funding for more diverse projects. One of the key inclusions is that Council can apply for funding to assist with the costs to deal with waste as a result of an emergency.

New Zealand Emission Trading Scheme.

The Environmental Protection Authority have indicated that they intend to change the way that the greenhouse gas emissions are to be calculated for 2024. In 2022 they changed the calculation and at the time they knew they had not got it right. This recalculation is to fix this mistake.

It is anticipated that this new calculation will increase our liability by approximately \$200k annually, increasing our current liability from \$816k to approximately \$1m. This is still \$300k under the annual budgeted total of \$1.3m.

Hazardous Waste/Reuse Centre

Reuse Centre

As of 1 July, the new contractor (JBL who run the HWC) took over the management of the Reuse Centre at the Recycling Centre. They have some ambitious plans to improve the site which will allow us to recycle commercial and demolition waste.

There will also be changes to where products are to be delivered, for example the whiteware and e-waste will now be collected at the Hazardous Waste Centre.

General

New Ministry for the Environment reporting requirements.

From 1 July, Council is required to report on all waste and recycling across all of our sites and in specific categories specified by the Ministry. These reports are completed monthly and will be recorded via the Online Waste Levy System.

We have modified our computer systems for this and have been testing the new requirements.

The new categories are:

- Construction and demolition
- Mixed Industrial, commercial and institutional
- Heavy industrial
- Residential drop off
- Residential kerbside collection
- Unusual activity
- Transfer Station – mixed activity

Services and Operations

Education Report – July 2024

(Information prepared by Annie McDonald on behalf of the education team of Annie McDonald, Angela Wentworth and Ramona Millen) E340-001-001-01

Highlights from kindergartens and schools can be found in our term Greenchat - [GREENchat - Marlborough District Council](#) sent out to schools at the end of each term.

Programmes we deliver as part of our environmental education work to schools and ECE's can be seen here [Environmental Education Programmes - Marlborough District Council](#)

The Enviroschools Marlborough website shares local school and kindergarten stories - [Blog and Stories - Enviroschools Marlborough](#)

In the Enviroschools programme our team has been working with eight schools and six kindergartens on a variety of programmes and projects linked to our 2024 focus on place. In schools these include delivering Nature Connection sessions at local parks and reserves, supporting Envirogroups with actions like creating or extending gardens using plants used in Rongoa, making wax wraps and learning about giving back to the community as part of a wellbeing programme. Kindergartens have been looking at reducing their waste, planting new native gardens, looking after community gardens and developing Nature Connection programmes.

In our wider environmental education activities, two teacher workshops were delivered on Nature Connection as part of curriculum days. Two schools took part in an MDC led replanting programme at Kahikatea Reserve and an extension of a planting programme along the Taylor River is planned around Matariki with secondary students. A few lucky kindergarten and school students also got the chance to see the new recycling trucks in action as part of a waste inquiry they were working on. Unfortunately, we had to reschedule a couple of events due to wet weather. The first of the Wetland Warrior Envirogroup events with LandCare, Grovetown Lagoon and Koru Nature Reserve was postponed but the second one went ahead and students learnt how to propagate and plant natives and about the species that live locally and what makes them special. Students, teachers and the teams that supported them gained a lot from this experience and more are scheduled next term. The Taylor River Guided Walk for teachers sharing the history of the area and activities for students on the land learning about the plants in the water learning about storm water and water quality is rescheduled for August.

Working with community we have established a school's programme with Envirohub for Litter Intelligence which is part of the Sustainable Coastlines project that is now in action. We have been collaborating with the Wai Connection programme looking at ways we can offer follow on support to local schools to be involved in their catchment education programmes. A programme was delivered for a group of Te Kura students that explored the Pollard Park backyard garden and investigated worms and worm farms looking at the role tiger worms play in helping break our food down.

The Kids Edible Garden facilitators met for a workshop at the community gardens to see a larger garden in action and how they companion plant as well as exploring the kumara plot run by rangatahi. Six new facilitators are being supported in schools to run the programme and options for new reporting formats are being trialled

Our educators have attended webinars on literacy and nature and updates on the curriculum through NZAEE as well as regular Enviroschools online professional development opportunities. Our team are meeting with our Nelson Tasman colleagues in August to share work programmes and view their Enviro Expo for teachers to look at how we could set up a similar expo in Marlborough.

Parks and Open Spaces Activity Report

(Information prepared by Jane Tito, Robert Hutchinson, Kiri Whiteman, Grahame Smail, Linda Craighead, Brad Molony, Regan Russell, Carolyn Jones, Robyn Blackburn, Rachel Hutchinson, Murray Morgan, Ross Laybourn,) R510-009-000-01, R510-006-02, R510-005-04-02, R800-005-03

Blenheim Parks

Pollard Park

Maintenance is the main priority in Pollard Park at present. Staff have been working through the perennial border and cottage garden cutting down the plants for winter and tidying as they go. At the same time the staff pruned the fruit trees and berries in the potager.

All the annual beds are now planted for the spring display and the bulbs are starting to come up. Planting was done in late April/early May.

Staff are about to advertise for rose pruning demonstrations, which will happen in the Pollard Park rose gardens during mid-July. Every year we advertise a three-day slot of public demonstrations with staff showing the public how to prune and answering any questions from those attending. The demonstrations are done alongside the staff working in the area. We explain the process and what we are trying to achieve with the way we prune.

Staff have replaced approximately twenty rose bushes recently; this is done to replace the dead or sick plants. All the rose gardens will be weeded and tidied with a layer of mulch in the coming weeks.

Currently the staff are cleaning up the last of the autumn leaves with 95% of the trees having now finished dropping leaves for the season. With all the wet weather recently, this makes for an excellent job for the staff when the gardens are too wet to be worked on.



Seymour Square

All the annual beds have been planted for the spring displays. Gardens were dug over after Anzac Day and replanted during May. The flower plants are now growing and starting to produce flower buds and some plants are already coming into flower.

Staff have been through the perennial borders, cutting back the plants for winter and weeding and tidying as they go. Gardens will be mulched when they dry out enough but they are currently too wet with the rain over recent weeks.

Community Hockey Turf - Nelson Street

Staff have been working with Marlborough Hockey and Marlborough Girls College to prepare an MOU for shared use for the recently opened hockey turf and pavilion. This sets out the day-to-day activity of how the hockey facility is used and managed. The MOU has now been signed.

Additionally, a document for Marlborough Hockey to lease the pavilion from the Council is currently being negotiated between staff and Marlborough Hockey representatives.

Rewi Murray Park

Staff have also been working with the Council's contractors on a contract variation to provide full year maintenance of Rewi Murray Park, formerly the home of polo in Marlborough. Previously the Council only maintained the playing turf and carpark area during the winter.

Staff have also been negotiating with the Blenheim Polo Club to purchase some equipment, pumps and irrigators to help maintain the Park. The Club has officially vacated the Park removing everything but their clubrooms and the equipment the Council has purchased.

Athletic Park

A well-meaning parent has marked lines onto sections of the now faded athletics track to help with winter training. Unfortunately, a herbicide direct to ground was used and now we have very visual lines on the Park that will require some work to repair (costing close to \$1,000). Hopefully, we will get good germination in spring and there is no delay to the beginning of the athletics season.



Horton Park

Work is now complete on the relaying of the No 1 cricket block at Horton Park. There is now a grow in period for the seed to germinate and be managed until the first ball is bowled on the new surface in October.



College Park

Retractable bollards were installed late last year at College Park at the request of the Police following antisocial behaviour in the carpark. Unfortunately, someone has now taken exception to the bollards and has driven into them on two separate occasions.



Taylor River Floodway

Resource consent has been lodged for the use of pindone (an anticoagulant poison) on the Taylor River Floodway and private property to control rabbits, as was approved by Council in May. With all necessary landowner approvals having been obtained it is anticipated the consent will be processed soon.

A test to gauge bait uptake is currently being undertaken. Indications are that there is a lot of feed around for rabbits at present, so some thought is being given to deferring the programme until the food source is less.

New wayfinding finger signs in Blenheim CBD

We have recently added 16 new wayfinding finger signs to the existing posts around Blenheim's CBD as well as adding a new post for the newly developed EV charging station in Park Terrace. The need for updating the posts was instigated by the change of location of both the Library and Art Gallery and the need to replace a number of missing finger signs throughout the CBD.



Of note, the new gardens at the EV charging station have been designed and are being maintained by a Marlborough Lines apprentice as part of their studies/training.

Wash Bridge Recreation Reserve, Wairau Valley

The development of the new freedom camping area at the Wash Bridge Recreation Reserve has been underway. This site in the west of the district will provide 10 spaces for users. The area required some works to level the site and provide a sealed accessway to the state highway, which was required as a condition of resource consent. It was also important to retain access to the Wairau River through the back part of this reserve.

Unfortunately, within 24 hours of installing the marker posts for each of the 10 parks someone stole the posts. This required their replacement with a more substantial footing to make it more difficult to remove.



Wither Hills Farm Park

The slash that has lain in the Gentle Annie gully for a couple of years has been chipped using a forestry mulcher. A quick and relatively cost-effective way to deal with the slash, it will be followed up with a spray that will help break the mulch down quickly to enable the carbon to return to the soil and then the area can be planted back with grass. A trial of the spray is being conducted in another area of the farm park prior to being used in the Gentle Annie area.



Lansdowne Hub

Top of the South netball tournament

The Woodham Top of The South netball tournament was held on Sunday 9 June at Lansdowne Park. Representative teams from Marlborough, Motueka, Nelson, Kaikoura, Selwyn and Buller took part, each side getting three matches over the course of the day. The under-18 grade comprised six sides, with eight teams contesting the under-16 division. The top performers on the day were the Selwyn under 16 and under 18 teams.



Billet the Mako

The Tasman Mako are hosting a meet the Mako at the Lansdowne Hub on 24 July before some of the players are billeted out for the night with Marlborough families. The following morning, families drop off the Mako players who will be involved in a captain's run on Lansdowne Park before the team heads off to Wellington for a pre-season game against the Manawatu Turbos.

This year's Mako's games at Lansdowne Park are as follows.

- Tasman Mako vs Bay of Plenty Steamers – Saturday 31 August 7pm
- Tasman Mako vs Wellington Lions – Sunday 15 September at 2pm

BILLET THE MIGHTY MAKO

HOST THE TASMAN MAKO AT YOUR PLACE FOR A NIGHT DURING THE NPC PRE-SEASON. A GREAT WAY TO GET TO KNOW YOUR FAVOURITE FOOTY PLAYERS.

WEDNESDAY 24TH JULY
4:30PM | LANSDOWNE PARK
MEET THE MAKO AND PICK-UP YOUR MAKO HOLIDAY GUESTS

THURSDAY 25TH JULY
7:45AM | LANSDOWNE PARK
GIVE 'EM BACK TO US
8:00AM | STAY FOR CAPTAIN'S RUN

IF INTERESTED, PLEASE EMAIL: hnw@tasmanrugby.co.nz

Renwick Parks

Renwick Dog Park

Staff met on site with a couple of regular Renwick Dog Park users recently over a concern of dogs getting quite dirty when using the cool down dog baths. There are two of these at different locations within the Dog Park. This was a relatively minor but important concern which was sorted by the Council's contractor by gravelling an area around the dog bath.



Before



After

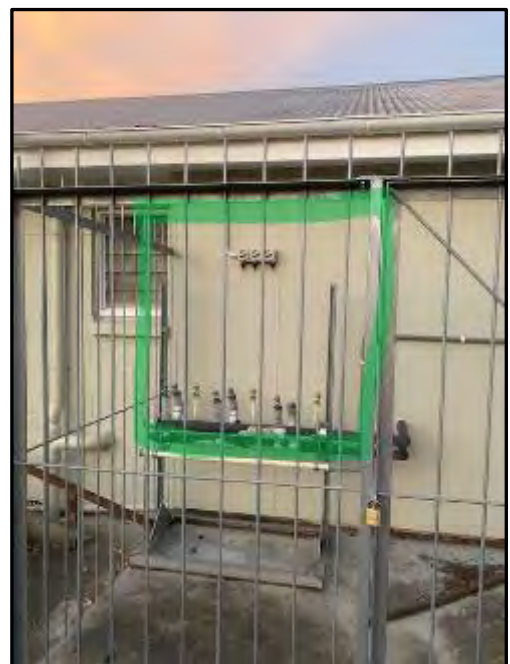
Awatere and Flaxbourne Parks

Seddon Domain

Three gas califonts were stolen from the back wall of the changing pavilion at Seddon Domain despite them being within a locked cage. This was reported to the Police. It is quite likely the califonts were taken for the copper piping inside each unit. Awatere Rugby Club players have had to endure cold showers as we searched for replacement califonts which have now been replaced at a cost of \$13,000.

The control boxes for the Awatere Rugby training lights were also broken into and required repair. It is likely the offenders were looking for copper wire here as well and were lucky they weren't injured when damaging the electrical boxes.

A revival of netball in the Awatere area is underway with training having to be extended to the late evening. For the first time since 2021, the lights around the courts are being used which is great to see.



Gas califonts were removed from the area highlighted in green inside locked cage

Picton Parks

Port Marlborough Pavilion

Fresh Choice Picton - Rainbow Run

After a hiatus in 2023, due to ground maintenance on Endeavour Park, the Rainbow Run was held on 7 April and proved very popular with approximately 483 participants this year. This event is all about family friendly fun, where adults and children alike have a chance to walk or run with their family and friends while getting a bit messy, having a laugh while our team (and sponsors) douses them with lots and lots of colour.

Local businesses lined the track throwing different coloured paint at participants making this a truly community event. Adding to the excitement the local firefighters-soaked participants at the start of the event.



Marlborough Team Challenge

The Marlborough Team Challenge event is in its second year and is designed to encourage Marlborough residents to get active in a social environment over the winter period. This year we have extended the distance of the route as well as increase the number of participants allowed in each team.

Teams of up to eight will aim to complete the virtual course from Cape Reinga to Bluff over the course of the Challenge. That's a staggering 2,067.20 km in just six weeks. Walking and running are encouraged and participants can either enter their activity manually or sync with Fitbit, Garmin Connect, Apple Health or Google Fit. An activity conversion chart also allows participants to convert their training, dancing, tennis, wheeling on a wheelchair and other exercise activities into steps.



Tirohanga Bridge

The Tirohanga pedestrian bridge approach works have now been completed and a code of compliance has been applied for. Once signed off, appropriate planting to revegetate the area disturbed by the construction will occur. The bridge will allow all weather crossing of the Waitohi River to allow access to the Tirohanga Track as well as providing a stunning backdrop for a photo opportunity.



Victoria Domain – Revegetation

Preliminary planning work for the revegetation of an area at Victoria Domain that a block of western cedars was removed from is underway. The removal of these trees was an action that was signalled in the Victoria Domain Reserves Management Plan to help improve amenity of nearby residents and enhance biodiversity values for the Domain.

The area is recovering well from the removal of the trees and is surprisingly weed free. There is already a good base of regeneration occurring with a good seed source in the area. Further planting will help the processes of regeneration. Advice on appropriate species for planting has been provided by the Environmental Science Team.

It is hoped local schools and other interested parties will be involved in the revegetation work.



Shelly Beach Reserve - Shoreline Protection

A small amount of additional rock was placed at the southern end of the rock revetment shoreline protection barrier that helps protect the Shelly Beach Reserve grassed open space area and native trees that provide shade. The revetment work that was done a few years ago has proved very effective in providing protection against wave action erosion along this narrow grass reserve margin and any potential loss of landward space.

Former Picton Aquarium site

Port Marlborough New Zealand Limited (owners of the former aquarium site) recently hydroseeded the gravelled site. With a bit of warmer weather, the new grass should spring to life and the area will be a nice, grassed space until such time as the Port Company decides on the future of this area.

Northern Marlborough/Sounds

New reserve land

Staff have been working with a developer in Okiwi Bay to enhance public access in the Bay. Through a subdivision application, several lots have been created as recreation reserve with the intention of creating a walking/cycling track. The developer has applied for and received resource consent to construct the track with some funding available through the first round of the Better Off Funding to develop the track. Ultimately there will be a loop track through the hills behind the Okiwi Bay township.

The intention is that a trust will be established and a lease entered into with the trust for development and ongoing maintenance of the track.

Another small area of land on the east side of the Bay has also come into Council ownership through the same subdivision. This was identified by the developer a couple of years ago as being potentially surplus to development needs and staff gave some consideration at the time to acquiring this land. The opportunity was revisited late last year in considering the location of a replacement footbridge across the lower part of Ruataniwha Stream.

The following map shows the location of the land (outlined in blue) now vested as recreation reserve.



District Public Conveniences

Maintenance

Routine maintenance and dealing with senseless vandalised facilities has continued over the past period. New lighting has been installed at some sites in response from users and the need to have particularly high use sites well-lit at night.

Public Toilet Facilities – Appreciation Feedback

A nice email was received recently via the Mayor’s Office from some visitors through the district while touring the South Island. They commented on the parks and toilet facilities in Marlborough:

“I just wanted to say how much we appreciated the myriad of parks and rest areas, and especially the ones that have tables/bench seats and toilet facilities. The toilets were all so clean and well stocked with paper, they are a credit to the people who maintain them.

Please pass on our sincere thanks to the people who (a) arranged for these facilities to be installed and (b) keep them in such good condition.

In particular we loved the Lake Elterwater rest area. We stopped there for coffee/pit stop on our way south, and again a couple of weeks later on our way back to the ferry. What a beautiful spot with all the birdlife.”



District Cemeteries

Joint Cemeteries Meeting

Twice a year, Council Parks and Open Spaces staff, the local funeral directors and cemetery staff from our contractor, Downer, meet to discuss matters concerning the eight Council-administered cemeteries.

The most recent meeting, on 15 May 2024, covered a wide range of topics, some of which were:

- the trial of a grave-shoring device for use in Omaka cemetery, where the stony ground often collapses at the sides during digging.
- improved numbering planned for several of the cemeteries to assist visitors to locate graves.
- a reminder to follow the correct procedures around installing a headstone or memorial, and notification of work underway to correct the permitted headstone/memorial sizes in our Cemeteries Bylaw and handbook.
- on-going work by the Cemetery Administrator to correct the Cemeteries Smart Map, using the information we hold in the old interment books and on-site inspections.
- new plots added to two of the cemeteries and other work completed within.
- proposed fee increases being considered by the Councillors.

One issue of concern raised was a large tree at Fairhall Cemetery that was planted many years ago amongst the graves and is now lifting the nearby concrete beam and headstones. We have previously had to remove trees such as this, which currently entails initiating the standard Council “Tree Removal” process. This can take some time and a possible amendment has been included in the recent review of the “Tree Policy” in an attempt to streamline the process of removing a tree that is interfering with graves.

Once the removal of the tree is approved, the families of those buried nearby are contacted (when possible) to advise of the work to be done, and then a monumental mason carefully uplifts the headstones for safe keeping whilst the tree is removed. Once the tree is gone, the concrete beam is reinstated and the headstones returned. This is a costly process and one which is now avoided for the future by careful choice and placement of any trees planted within cemeteries.



GPS-Plotting of Cemeteries

As mentioned above, one of the on-going projects for the Cemetery Administrator, as time allows, is correcting the information - and sometimes the position of graves - on our Cemeteries Smart Map. This is important as we wish to present accurate information to the descendants of those buried within our cemeteries. There are many unmarked graves and we regularly receive enquiries from family members who wish to arrange installation of a plaque or headstone, sometimes many decades after the burial took place. It is therefore very important that we have accurate maps.

As part of this work, we currently have a casual employee, Harry Edwards, who is using a very accurate GPS receiver to plot the visible structures within the older areas of our cemeteries. This information is available on our internal Field Maps, along with photos taken at the time, to assist in checking the Smart Map accuracy and to eventually attach the photographs to our database and therefore the Smart Map for public viewing.



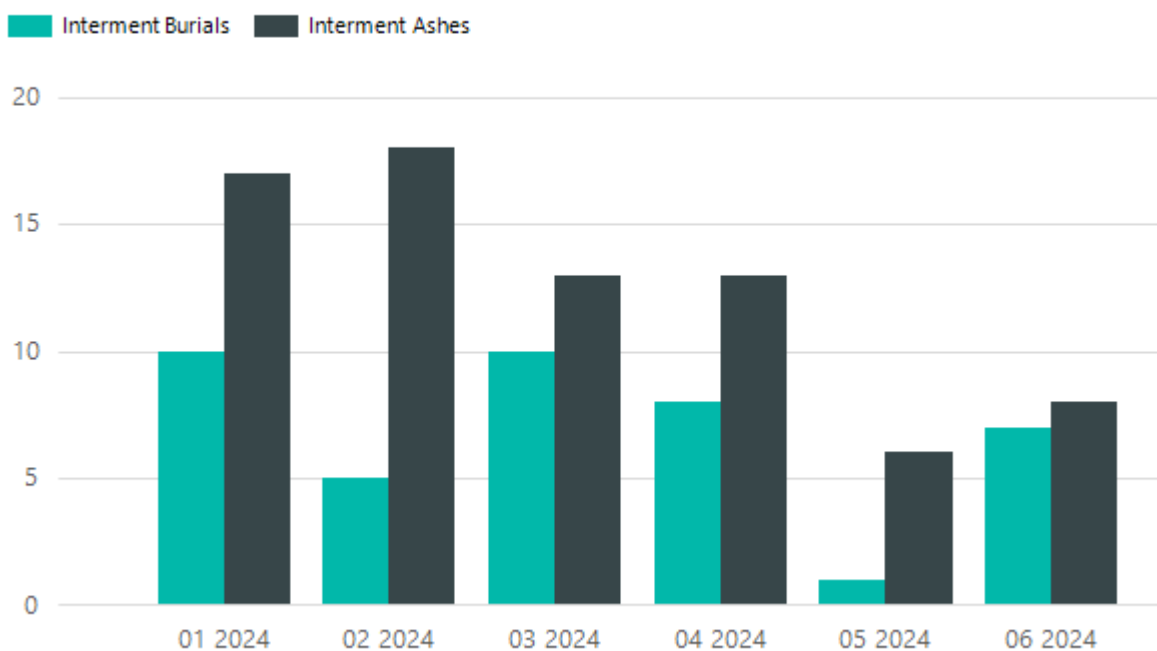
This screenshot of part of the Havelock Cemetery shows how plots that are not visible from the aerial photos (due to being obscured by trees) are currently not included on our Smart Map. The coloured rectangles show what is on the Smart Map, the circles are where the recent GPS coordinates have been taken from, with each coordinate having photos attached.



The next logical step in this process would be to undertake a survey of our older cemeteries using Ground Penetrating Radar (GPR), which would build a picture of where unmarked graves lie and help to determine if there is unused ground which could be used for future expansion of the cemetery. We have obtained quotes for this service from specialists but have not yet determined if we will be able to proceed at this stage.

Interments for the year to 24 June 2024 across all Council-administered cemeteries

Interment Summary (Monthly)



District Memorials

Memorials around the district were given their annual spruce up for the ANZAC ceremonies which were again well attended this year with favourable weather and ANZAC falling within the school holiday break.

Anzac Day commemorations

The service at the Torea Saddle soldiers' memorial was well attended and similarly the Picton Waitohi 6:00am dawn service. This is always the first ANZAC ceremony for the district and following the traditional service there is now a Māori welcome and tributes to those recorded on the Māori Battalion - D Company memorial near the water's edge on the Picton Foreshore Reserve.

Other ANZAC Day commemoration services held around the district from French Pass to Ward and many places in-between were all well attended.

Walking and cycling

Late last year the tracks within the Mountain Bike Park were audited for grading consistency using the New Zealand Cycle Trail Design Guide (5th edition). A number of the tracks were found to be under graded when using the above design guide. Options to resolve the trail grading inconsistency include either re grading an existing trail to the higher grade or undertaking works to bring the trail to the grading sought.

The Mountain Bike Club have been asked for feedback on the report and a paper will be presented to the August meeting of the Assets and Services Committee with recommendations.

Trees

Street tree planting

Each winter approximately 130 new street trees are planted in townships around the district. This year's trees have been purchased and will be ready for planting in August.



This year's street trees to be planted

We are at a stage now where the majority of the trees being planted in Blenheim are replacements for dead or dying trees. This is because a large percentage of these trees are now reaching 40+ years and their health is beginning to decline.

We have also started a planting plan for Havelock so there will be a few streets planted with either Kowhai's or flowering cherries where underground services and space allows. Seddon has had a number of new trees planted with Crepe Myrtles over the last few years.

Ecological reserves

Sutherland Stream QEII Covenant area

Last year staff successfully applied for a grant from The Stephenson Fund, which is a fund established by the QEII National Trust to provide support for enhanced stewardship of covenants and to enhance our partnerships with covenants. Staff were able to purchase eight AT220 Auto Traps for the covenant area. These traps auto reset meaning a contractor doesn't have to clear and rebait the trap resulting in more opportunity to keep target pest species out of the area.



Kahikatea Reserve

May saw the area affected by the arson earlier in the year, replanted by students from Tua Marina and Spring Creek schools. Approximately 450 native trees were planted over the morning with assistance from the team at Landscape Marlborough who gave the students valuable education on tree species and how to plant and care for trees.



Playgrounds

Havelock War Memorial Park

The new playground was a finalist for the Recreation Aotearoa Play Space of the year category for projects under \$500k. Unfortunately, it did not win but to be recognised as a finalist was a great achievement. Finishing touches are underway to the playground with a four-square court and permanent cornhole board (beanbag toss) being installed. The cornhole bags are being made by the Red Cross Refugee Sewing group and are made from street banners that have been damaged.



Picton Foreshore Reserve

The very popular waterplay at the Picton Foreshore Reserve playground has had a significant overhaul and renewal of the water pipe manifold and solenoids that control and run the ten waterplay jet nozzle features. The waterplay has been in operation for over seven years now.

Wairau Valley Township

The Wairau Valley Township now has two new play areas that have been installed at the rear of the Wairau Valley Hall replacing the old pieces that were there. There are two areas of play; one being a junior area, which is fenced to provide greater safety and security for the young ones; and the second is a larger open space for older children.



Open, older children play area



Junior fenced area

Policy and planning

Wither Hills Management Plan

At the time of writing, one submission has been received on the recently notified Draft Wither Hills Management Plan. There has been strong interest in the Draft Plan with about 30 copies being picked up by the public from the front counter. As submissions come in and are reviewed, they will be made available on the Wither Hills consultation page on the Council's website. Submissions will be open until 9 August.

Grovetown Lagoon Management Plan

A workshop with the Grovetown Executive was held in late May with good progress being made on the draft document. Some mapping work is to occur as well as some final editing and then the draft documents will be workshopped with Councillors.

Wither Hills Working Group

The Wither Hills Working Group is an operational group comprising staff from various departments of the Council (Rivers, Parks and Open Spaces, Biosecurity, Environmental Science and Monitoring, Services and Emergency Services) as well as external interests including the farm park lessee and FENZ. The group was set up last year in acknowledgement of the differing responsibilities each of the above departments have and to improve the efficiencies in delivering outcomes for the Wither Hills. In time, the group will help to ensure coordination of activities across the range of Management Plan outcome and action areas.

The group met recently to discuss what had been achieved over the past year and what was planned for the next year. The following matters were covered:

- Recap of the development of the management plan and that this was now out for public submissions.
- Recap of farming activities.
- What farm management activities had taken place and what was proposed for the next year.
- Discussion on the fire risk, the need to report back against the outcomes of the fire assessment work and the closure of the farm park for an extended period over the most recent summer.
- The various operational plans signalled in the management plan that will need to be completed.

Public access

Staff met recently with a representative of Herenga ā Nuku Aotearoa (Outdoor Access Commission) and a landowner representative concerning esplanade strips along the east Marlborough coast north of the Awatere River. The esplanade strips came about through Overseas Investment Office conditions following the purchase of land along this coast by overseas interests.

The Outdoor Access Commission wanted to confirm that conditions had been complied with regarding signage and access. However, coastal erosion around the location north and south of Renners Road has meant the public access links from Renners Road to the new esplanade strips and existing marginal strips cannot be established. It is important that if public access is to be provided then it needs to be both safe and lawful. At this time, there doesn't appear to be any likelihood that this can be achieved.

Resource consents

Parks and Open Spaces staff have been spending a lot of time recently on providing advice on several subdivision applications. One particular subdivision involves the development of 94 residential sections on land to the east of Wairau Hospital. This is a fast track application that has been made to the Environmental Protection Authority so will not be decided by the Council. However, the process provides for the Council to have input into the application.

A large recreation reserve of approximately 3000m² is proposed, which will vest in the Council. The applicant has originally proposed some features, which you wouldn't usually expect to see on a neighbourhood reserve (community garden, barbecue and cultural features). Staff have been providing advice as to how these features need to be managed to ensure that additional maintenance costs are covered by a body corporate or similar.

Road Safety Coordinator Update

(Information prepared by Robyn Blackburn)

R800-005-03

Motorcycle Safety

Riders' uptake of Ride Forever motorcycle training in Marlborough is well under target despite ACC reducing the targets for FY2024 and the number of incentives offered to riders to attend training by our road safety team.

Month	Marlborough					
	2024			2023		
	Delivered	Target	Target %	Delivered	Target	Target %
July	0	5.3	0%	2	19	11%
August	0	6.36	0%	3	23	13%
September	0	7.42	0%	0	27	0%
October	0	8.48	0%	10	31	32%
November	19	9.54	199%	17	35	49%
December	0	8.48	0%	0	31	0%
January	6	10.6	57%	2	38	5%
February	5	10.6	47%	7	38	18%
March	15	11.66	129%	5	42	12%
April	6	10.6	57%	0	38	0%
Total	51	89.04	57%	46	322	14%

Note: Targets are lower for FY24 than they were for FY23

Marlborough Ride Forever course delivery YTD at end Q3 (FY23 & FY24)

The ACC Injury Prevention Partner for the Upper South Island met with the Road Safety Coordinators from Tasman and Marlborough in May to discuss new motorcycle safety initiatives for 2024-2025, including how to increase the uptake of training in Marlborough.

Nelson/Tasman are well on or over their projected target for riders attending Ride Forever (ACC initiative) training. It is accepted that, because the contracted training provider for Marlborough is from Nelson/Tasman, there are limited weekends offered for training in Marlborough. However, the training provider often struggles to fill the available training spots.

One new initiative recently put in place is for all new riders to receive congratulation packs encouraging training when they pass their Learner Licence at AA.

Child Car Restraint

A total of 670 road safety packs created by the Marlborough Car Seat Safety group have been given to local primary schools by the School Community Officer to be distributed to all new entrants.

The packs contain several flyers relating to legal child restraints for tamariki under seven years old, how to use crossing points, as well as a road safety activity book and colouring pencils.



Cycle Safety

In partnership with Welcoming Communities, Te Wahtu Ora and Red Cross, the Council's Ride-on team recently delivered a Grade One (off-road) cycle skills training session to former Colombian and Rohingya refugees. While some who had registered for this pilot programme were not able to make this session, we did have 20 cyclists go through the training on the day. Bikes from the MenzShed and donated helmets were on-hand for people to choose if they did not already have a bike and helmet.

A further Grade Two (on-road) session is planned for 8 June for those riders who were able to pass their Grade One training and are over 10 years of age. Further training opportunities will be offered regularly to these communities and others who have recently moved to or work in New Zealand.

Cycle safety programme for former refugees

By Chris Valli

27 former ex refugees now residing in Marlborough, are getting on their bike for a cycle safety programme.

Rohingya (Myanmar) and Colombian former refugees and migrants have registered for the course which will consist of skills training based on the local RideOn cycle skills education programme and delivered by trained cycle skills instructors.

The programme is divided into two three hours sessions-Grade One (off-road) and Grade Two (on-road) skills training. Other training includes New Zealand Road Rules and legal requirements for cycling – wearing helmets, when to use lights and mandatory bike requirements.

Rebekah Lowe, a Health Promoter with Nelson-Marlborough Public Health says volunteers who support the formal refugee resettlement programme expressed interest in a cycle safety programme for former refugees.

“Hard in her role as an ESOL educator noticed that some Rohingya former refugee women don’t have any means of



The RideOn Cycle Skills Programme has been running in Marlborough schools. 27 former ex refugees now residing in Marlborough, are getting on their bike this weekend for the cycle safety programme which consists of skills training delivered by trained cycle skills instructors.

transport around Blenheim. She thought providing cycle skills classes could provide women more access to the area,” says Rebekah.

Meanwhile, Red Cross has been providing former refugees with bikes and had noticed that some didn’t know how to ride the bikes and/or understand the

New Zealand road rules.

“He has also noticed that some people are riding bikes without helmets. Blenheim Menzshed, who have an excellent refurbish older bikes programme are supporting this programme by providing bikes at subsidised rates to riders.”

Health NZ – Te Whānui Ora,

Marlborough District Council, the Multi-Cultural Centre and Red Cross volunteers worked together to create the programme. ACC have supported with funding for helmets.

The first lesson will be held at Horton Park, this Saturday May 25 from 12pm until 4:30pm.



Drink Driving – Better Together initiative.

Marlborough has been invited to participate in the Better Together initiative to run May – June 2024.

The aim of this initiative is for local councils, NZTA and NZ Police to work together to address drink-driving in three regions – Canterbury, Tasman and Greater Wellington.

Drawing on local knowledge and insights, the aim is to develop a co-ordinated campaign across all communities which includes promotion messages and enforcement to leverage and influence public perceptions and change behaviour.

The overall objective is to reduce deaths and serious injuries.

Locally the Council has been promoting this road safety message and the national “Would you rather” campaign through social media, press releases, radio, digital advertising and community newspaper advertising.

Drinking? Don't Drive

Wednesday, 22 May 2024, 11:49 am

Press Release: Marlborough District Council



Marlborough District Councillor Jonathan Roberts (left) with Blenheim Police Sergeant Josh Clouston discuss the campaign to target people in Marlborough who drink and drive. (Photo supplied)

Sport & Recreation Community Activity Fund

(Information prepared by Samantha Young/Jane Tito)

R510-027-03-23

The Council's Sport and Recreation Community Activity Fund is open to event organisers or local clubs and organisations to help create small sport and community activities that are of low cost to participants and encourage involvement and physical activity. This is an annual contestable fund with \$30,000 available for allocation with one funding round per annum.

This year, there were four applications to the fund and these were all approved. Attached are the latest minutes setting out the applicants and the funding each requested and received.

**Report & Minutes of Meeting of
SPORT & RECREATION COMMUNITY ACTIVITY FUND
DECISION-MAKING PANEL
2023/2024**

**Thursday 9 May 2024 commencing at 11:30am
Marlborough District Council (Awatere Room), 15 Seymour Street, Blenheim & Zoom**

Present:

Clr B Dawson (Chair) - via Zoom; MDC Regional Events Advisor Samantha Young; MDC Parks & Open Spaces Manager Jane Tito

Background:

The Sport & Recreation Community Activity Fund is open to event organisers or local clubs / organisations to help create small sport and community activities that are of low cost and encourage participation and physical activity. Council allocates \$30,000 per annum for this fund. There is one funding round per annum.

Meeting Report & Minutes:

All applications and associated paperwork were sent to panel members in advance of the meeting.

REA gave an overview of the fund and its purpose.

REA provided an overview of each application before funding discussions commenced.

Parks & Open Spaces Manager confirmed total available budget for this funding round (including carryover) is \$51,000.

Summary of Decisions Made:

\$37,016.75 of funding was approved as shown below.

Application & Event Name	Funding Decision & Conditions
Marlborough Performing Arts Competitions Society Incorporated 'Marlborough Performing Arts Competitions 2024'	Funding Requested: <ul style="list-style-type: none"> • \$15,000 Funding Decision: <ul style="list-style-type: none"> • \$15,000 approved Costs Covered: <ul style="list-style-type: none"> • Venue hire (ASB Theatre Marlborough) Funding Conditions: Applicant to provide details of where participants are from as part of their post-event accountability report.
Endeavour Park Pavilion Society 'Marlborough Team Challenge 2024'	Funding Requested: <ul style="list-style-type: none"> • \$6,500 Funding Decision: <ul style="list-style-type: none"> • \$6,500 approved Costs Covered: <ul style="list-style-type: none"> • Advertising • App development • Awards • Venue hire Funding Conditions: N/A

<p style="text-align: center;">Marlborough Basketball Association Incorporated</p> <p style="text-align: center;">'Waitohi Rangitahi 3x3 Basketball Tournament 2024'</p>	<p>Funding Requested:</p> <ul style="list-style-type: none"> • \$6,961.75 <p>Funding Decision:</p> <ul style="list-style-type: none"> • \$6,961.75 approved <p>Costs Covered:</p> <ul style="list-style-type: none"> • Officials and uniforms • Floor controllers • Promotion • Score clock • Bibs • Balls • Medals <p>Funding Conditions: N/A</p>
<p style="text-align: center;">Graeme Dingle Foundation Marlborough</p> <p style="text-align: center;">'Wet 'n' Wild Week 2024'</p>	<p>Funding Requested:</p> <ul style="list-style-type: none"> • \$8,555 <p>Funding Decision:</p> <ul style="list-style-type: none"> • \$8,555 approved <p>Costs Covered:</p> <ul style="list-style-type: none"> • Staffing • Equipment • Water tanker/trailer <p>Funding Conditions: N/A</p>
<p style="text-align: center;">General Discussion</p>	<p>REA sought permission from the panel to accept a late application from Creative Kids - all agreed.</p>

The meeting closed at 12pm.

Property and Community Facilities - Projects

(Information prepared by Maighan Watson)

Marlborough Hockey Turf and Pavilion (*Puna Wai*)

The Marlborough hockey turf and pavilion projects are now complete. On May 15 a dawn blessing and opening of the new facility was held, with Iwi gifting the name '*Puna Wai*' to the new hockey stadium. Hockey Marlborough promptly and proudly took the reins, with the first official match on the new turf hosted the day following the handover.



Fig 1 – Puna Wai Hockey Stadium



Fig 2 – Completed Hockey Turf



Fig 3 – Puna Wai Dawn Blessing

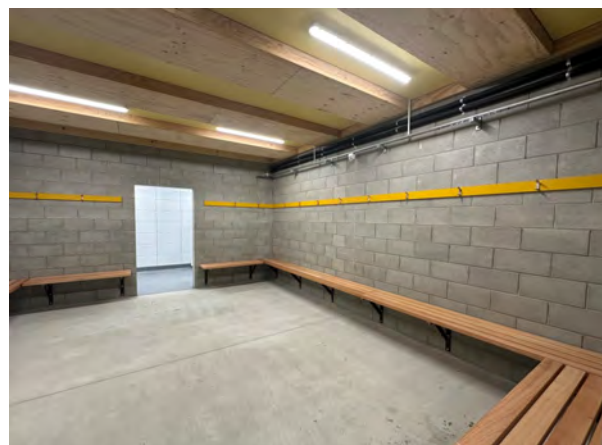


Fig 4 – Puna Wai – Changing Room 1



Fig 5 – Puna Wai Stadium



Fig 6 – Puna Wai Stadium

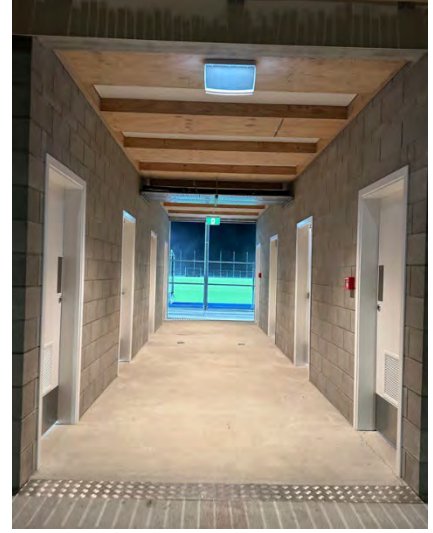


Fig 7 – Puna Wai breezeway

Former Millennium Art Gallery site development

Work to develop the former Millennium Art Gallery site into urban green space commenced mid-June. Fast forward two weeks under the near constant cover of rain, and the site is now green and near completion. Final works to be undertaken post-Matariki include the installation of the RPZ, water connection and meter (MDC Work Ops), bollards (MTP), and the planting of several new native trees and plant species (MDC Gardens Team).



Fig 8 – Former MAG site development



Fig 9 – Former MAG site development, asphaltting

Marlborough Mile

Work continues on the Marlborough Mile initiative in Blenheim’s CBD. Most recently the Aviation storyboard was installed in the Liz Davidson pocket park, completing the site. Credit to the MDC design team, Kina Communications, BB Signs and Cuddon Engineering for their work in bringing this together. In the background the design for the Viticulture site is underway, as is the final phase of the Agriculture site and storyboard.



Fig 10 – Marlborough Mile, Aviation storyboard



Fig 11 – Marlborough Mile, Aviation storyboard



Fig 12 – Marlborough Mile 'Aviation' Storyboard, Liz Davidson Place

Senior Housing development - 85 George Street, Blenheim

The finish line for Council's new Senior Housing development at 85 George Street, Blenheim is in sight. Contractor T & D Construction has completed the internal fit-out for stage 1 of the development, with the first floor decking material left to install. Over on stage 2, plastering and internal painting is well underway. Externally, the contractor is nearing completion of the hard landscaping, external stairwells and balustrades. Handover to Council is earmarked for August 2024, prior to which a blessing and official opening of the new housing development will be held.



Fig 13 – George Street Development, bathroom



Fig 14 – George Street Development, kitchen



Fig 15 – George St Development



Fig 16 – George St Development



Fig 17 – George St Development

Record No: 24164727