



PICTON HAPPENINGS

Free Newsletter

01 May 2024

01 Pink Ribbon Breakfast, 12.30pm - 2.30pm Wed 1 May

The Craft Circle invites you to join them at their New Zealand Breast Cancer Foundation fundraiser at Waikawa Boating Club. Pay \$5 per person at the door.. See page 4.

06 Endeavour Park Pavilion Society AGM, 6.30pm Mon 6 May

Endeavour Park Pavilion Society invites the community to their Annual General Meeting. Only financial members can vote or stand for office. See page 2.

19 Yoga Retreat, 10.00am - 2.30pm Sun 19 May

Vitality, Balance and Restoration! Nurturing and nourishing sequences and breathwork to restore balance and build your energy reservoirs to sustain your health and well-being over the winter months. Contact Fiona 027 655 1223 for more information or book your place at <https://www.nurturesoul.co.nz/book>

03 Picton Quilters Exhibition, 10.00am - 4.00pm Fri 3 to Sun 5 May

Picton Quilters present an exhibition and market of new goods with proceeds going to Hato Hone St John. \$5 entry includes morning and afternoon tea. See page 4.

10 Regenerative Tourism for Tōtaranui 9.00am - 10.00am Fri 10 May

Fenjie Qi (PhD student), invites you to Picton Library for a talk on research about tourism and its role in regional development, focusing on local community. See page 4.

22 A Cuppa With Your Councillors, 10.00am Wed 22 May

Council's Sounds-based councillors are available for a drop-in chat each month. Come along to Picton Library. For info see page 14.

03 Picton Wine Club, 6.15pm Fri 3 May

Join Picton Wine Club at Picton Little Theatre for their next tasting - Saint Clair Family Estate . See page 2.

12 Gondola Hill Walk, 10.00am - 2.00pm Sun 12 May

Walk up Gondola Hill and raise funds for the rewilding of Kaipūpū Sanctuary and Waitohi Picton. Enjoy this unique opportunity to access this local viewpoint. See page 6.

04 Coastguard Dessert Competition and Auction, 6.00pm Sat 4 May

Waikawa Boating Club presents 'Sweet As', a fundraiser for Coastguard Marlborough. Dessert tasting and live band. See page 4.

17 NZSQ Soundscapes, 7.30pm - 9.30pm Fri 17 May

The NZSQ is thrilled to return to Picton in May with a concert at Picton Little Theatre as part of its 2024 season Soundscapes. See page 5.

NEXT ISSUE

Publication date: 5 June 2024

Copy deadline: 5pm 29 May 2024

SUBSCRIPTION: The Picton Happenings is a FREE monthly newsletter circulated via email. To subscribe please send an email.

CONTENT: Are you a community group who would like to promote your activities or have a story to tell? Then please get in touch.

☎ 03 520 7400

✉ nicola.neilson@marlborough.govt.nz



ENDEAVOUR PARK PAVILION SOCIETY



AGM

MAY 6TH , 2024

**PORT MARLBOROUGH
PAVILION**



6:30PM

MORE INFORMATION

Only financial members can vote or stand for office.

Forms and more information available at
manager@endeavourparkpicton.co.nz



Picton Wine Club

Next Tasting

Saint Clair Family Estate



Picton Little Theatre
Friday 3 May | Doors open 6.pm |
6.15pm Start

Food Matches by Le Cafe

Members \$25.00 Member Couples \$40
Non-Members \$30.00

All welcome but bookings are essential.
E: pictonwineclubbookings@gmail.com
or contact Bruce on 027 346 2130

Picton Badminton Club



Term 2 Badminton on Wednesdays at QCC Hall

Juniors 4.45 to 6pm | Seniors 6.30 to 8.30pm

New members welcomed, children under Year 7
with a parent or older sibling to assist.

For more information email
dibusiness6@gmail.com



Picton Regional Forum



Seeking expressions of interest

By Councillor Barbara Faulls

The Marlborough District Council invites community groups in Picton to express their interest in joining the Picton Regional Forum, a platform that convenes every other month to discuss pressing issues and receive updates from Council staff on matters like national policy statements concerning freshwater, roading, the iReX project, and more.

Participation in the forum is voluntary, with the expectation that members disseminate all pertinent information to their respective community groups.

Established to bolster communication between the Council and the Marlborough Sounds Ward, the Picton Regional Forum facilitates dialogue, deliberates on issues, and formulates actions. Key objectives of the forum include:

- Encourage dialogue between Council and the

Picton / Sounds areas on issues affecting these communities.

- Encourage community consensus and understanding on issues affecting them.
- Support the Marlborough Sounds Ward Councillors in representing the views of their Ward.
- Assist Council in decision making for the Marlborough Sounds Ward.

For further details on the Picton Regional Forum, please visit the [Picton Regional Forum page](#) on the Marlborough District Council website.

To register your group's expression of interest, kindly contact Kirsty Baldwin via email at kirsty.baldwin@marlborough.govt.nz.



Regenerative Tourism for Tōtaranui

TIME & LOCATION

- 9-10 am 10th May, 2024
- Activity Centre, Picton
Library and Service Centre
Waitohi Whare Matauranga
- Light refreshment provided
- ALL WELCOME!

RSVP
Email: f.qi@massey.ac.nz
Tel: 029 020 58244

ABOUT THE STUDY
This research is about tourism and its role in regional development, focusing on the local community and people's connection to the natural world. Data was collected from Nov 2022 to Oct 2023.

PRESENTER
Fenjie Qi
PhD candidate in Development Studies
School of People, Environment and Planning, Massey University Palmerston North, New Zealand

MASSEY UNIVERSITY
TE KUNINGA KI PUREHURŌA
UNIVERSITY OF NEW ZEALAND



Join us at

parallel 41

Quilt Exhibition

+
Nostalgia Challenge & Display

Queen Charlotte Yacht Club
Picton Marina

Quilt Exhibition	Friday 3rd May 10am - 4.00pm
	Saturday 4th May 10am - 4.00pm
	&
	Sunday 5th May 10am - 3.00pm
	2024

Market Stall of New Goods with proceeds to St John Ambulance

Merchant Stands

\$5 entry fee
Includes Morning & Afternoon Tea



Proudly Presents

'Sweet As'



Dessert Competition & Auction

Fundraiser for



MARLBOROUGH

Saturday 4th May 6pm
\$20 pp includes dessert tastings
Open to everyone

Live Band - 'Full House'

Tickets available from Waikawa Boating Club
or Susie 021 2607361 okiwabaylodge@gmail.com
waikawaboatingclub.co.nz

Please join us at **Craft Circle** for a

Pink Ribbon Afternoon Tea

Wednesday 1st May
12.30pm - 2.30pm
Waikawa Boat Club
(Behind Jolly Roger restaurant)

All proceeds go to the New Zealand Breast Cancer Foundation



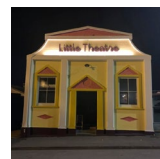
- ~ Bring a plate
- ~ Dress or accessorize in pink!
- ~ Guest speakers
- ~ Raffles donated by our generous community!

For more info call
Mo 021 274 5914

\$5 per person, pay at the door



Picton Little Theatre



NZSQ Soundscapes

Friday 17 May 7:30pm - 9.30pm

Tickets: [Eventfinda](#) \$40 + fees or \$45 cash sales at Summit Real Estate Picton and on the door if tickets are still available

The NZSQ is thrilled to return to Picton in May with a concert as part of its 2024 season Soundscapes. Following a sold-out concert with Arts on Tour in 2023, the NZSQ is back at the Picton Little Theatre with a programme showcasing a work written by renowned New Zealand composer, Leonie Holmes, alongside notable pieces from the classical canon by Haydn and Debussy.

Programme

Leonie Holmes Fragment II

Haydn Op. 71 no. 3

Interval

Debussy in G minor Op.10

Bucket List Movie group

Relaxed Sunday movie sessions at Picton Little Theatre. Dates for 2024: 12 May / 9 June / 11 August / 8 Sept / 13 October / 10 November / 8 December. \$10 membership fee, first session FREE. Then entry by koha/donation – we suggest \$10 per session. BYO refreshments. RSVP for each session to: Nicky.Wagner@outlook.com

Membership of Picton Little Theatre

Membership of Picton Little Theatre Incorporated Society supports our community theatre promote the live performing arts and bring culture to our town. \$25 incl GST for a year's membership.

<https://www.pictonlittletheatre.com/membership.html>

Picton Little Theatre | 9 Dublin Street, Picton



Picton
Dawn
Chorus



KAIPŪPŪ
Sanctuary

GONDOLA HILL WALK FUNDRAISER

Come and enjoy the beautiful view from the top of Mt Collins



WALK DETAILS

-  A steep scenic walk
-  Elevation gain 370m
-  4.4km return
-  Solid track

Date: Sunday 12th May 2024

Postponement Date: Sunday 19th May 2024

Time: Registrations from 10 until 11 am.

We aim to be down by 2pm

Price: \$20 for non members or \$15 for members.

Children under 12 walk for free.

CASH
BBQ
AT THE TOP



REGISTER YOUR INTEREST FOR FULL DETAILS

Come into **Picton Environment Centre**, 14 Auckland St

Find the event on **Eventfinda** and **Facebook**

OR TURN UP AND PAY ON THE DAY

Check in desk will be located at the end of Fantail Heights, Endeavour Park Estate. Please be mindful of residents when parking. Parking also available at the lower Pavilion carpark. A 5 minute walk from start of track.



Picton Heritage & Whaling Museum

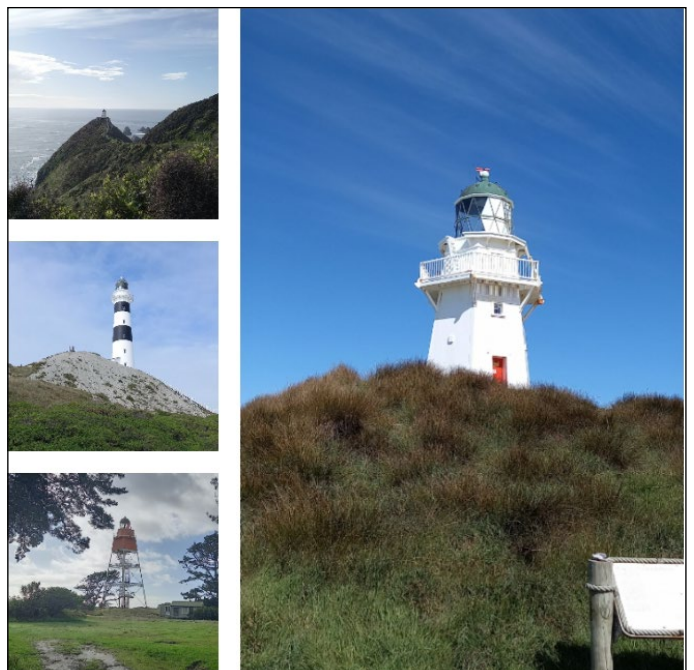
May update

By Mary Cooper

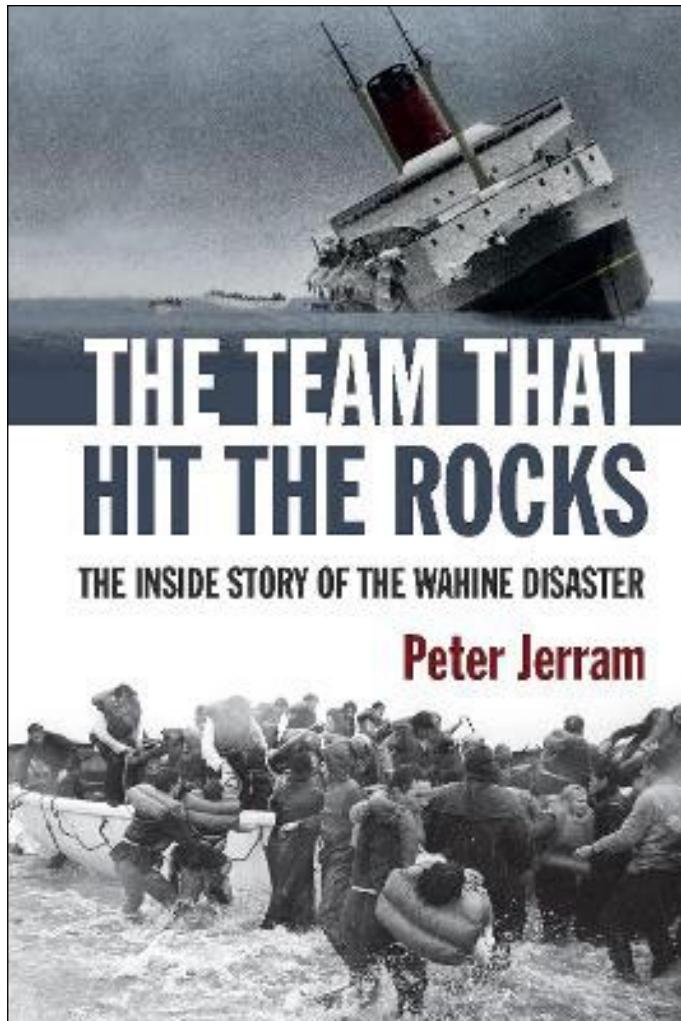


I have long been fascinated by lighthouses and “bag” them at every opportunity just like trampers “bag” mountains and huts. I have always liked the stories - a childhood story about Grace Darling and lately the lighthouse which was found abandoned by its keepers (Flannan Isles Lighthouse) and of course the movie “The Light Between Oceans” which features Cape Campbell lighthouse. How many of these lighthouses can you identify?

There is also an exhibition (left) relating to The Brothers Lighthouse at the museum.



We have for sale Peter Jerram's book (below) about the sinking of the Wahine (\$40).



My first car was..... We all remember our first car. These photos show the first motor car in Picton owned by Dr Redman (below) and in another we see the cars of the 1960s parked across the road from Oxleys (main image). My old Ford Anglia would probably feature in Len Southward's car museum! And now we have electric cars

A series of podcasts, videos and radio features that tell the stories of Aotearoa and our Pacific neighbours: <https://www.rnz.co.nz/programmes/history-matters>



Dr Redman, owner of the first car in Marlborough, an Oldsmobile, outside Picton Hospital in 1906.



Picton Heritage & Whaling Museum

9 London Quay, Picton

Open daily 10am - 3pm

www.pictonmuseum-newzealand.com

Waikawa Ratepayers & Residents Association



At our AGM earlier this month it was decided to only meet every second month - June, August, October and December on the second Wednesday BUT at 6.00pm rather than 5.30pm. For more information email wrrasn@gmail.com.



Ngā ratonga ki te manawa o te whenua
Heartland Services



Proudly provided by:

Te Piki Oranga
MĀORI WELLNESS SERVICES



#for the love of our
WHAKAPAPA

Heartland Services – access to government and community services for rural whānau

Te Piki Oranga is a provider of Heartland Services for whānau in the rural and remote regions of Marlborough, including:

Waikawa • Waitohi / Picton • Tōtaranui / Marlborough Sounds



Drop in for a kōrero with our friendly local team

We can help with:

- Technology: internet, email, printing, scanning, phones and more
- Government and community service forms, applications and websites
- Meet with government and community service staff from Inland Revenue (IRD), Workbridge, Justices of the Peace (JPs), Whānau Ora, Suicide Prevention and more
- Join a diabetes support group, facilitated by Te Piki Oranga
- Join a cancer information group, facilitated by Te Piki Oranga and the Cancer Society

See our website for the most up to date information: tpo.org.nz/heartland

22 High St, Waitohi / Picton
Open Mon–Fri, 9am to 4.30pm

03 577 5806

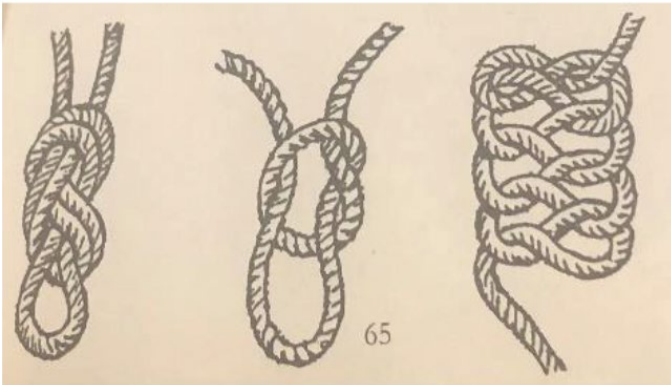
0800 672 642 | heartland@tpo.org.nz

Picton Rail and Sail



The knot

By Brian Morris



The word knot has many meanings. To navigators (both under and on the water, and in the air), it's a measure of speed (about 1.85kph / 1.15mph).

Sailors use many different types of knots to secure rigging and to make connections between various points and parts of their vessels; their ropes are made of a variety of materials, from old-school flax, hemp and cotton through to nylon. Truck and trailer loads don't much use ropes and knots nowadays – they are now mostly secured with bungy-cords, stretchy netting, plastic or woven straps or tie-downs to ensure they stay safely in place.



Above: Symbol of Complexity by Karol Gozdzikowski, 2023

Philosophers refer to the Gordian Knot which has become the description of a seemingly intractable problem. "Cutting the Gordian Knot" has become the catchphrase for any unconventional/creative solution applied to such a problem. Right now, the conflicts in Gaza or Ukraine would certainly qualify as modern-day Gordian Knots crying out for untangling.

In ancient Greek times, King Gordius in Phrygia tied a super-complicated knot around a cart, declaring that would be untied only by a future king of Asia. Contenders struggled for hours and days to undo the knot - without success. Then Alexander the Great rode into town, gazed at it for a few moments, drew his sword and cut straight through it and surprise, he subsequently became king of the known world at the time!

Picton Society of Model Engineers Incorporated (Picton Rail and Sail Society)



World-famous on the

Picton foreshore

VOLUNTEER



As a volunteer, you will help keep the loco wheels turning and the yachts sailing for everyone who comes to the Picton foreshore to enjoy what we have to offer – it's almost world-famous! All that's required is:

- (1) a \$5 annual membership fee
- (2) about ½ hour of training
- (3) willingness to do **one** two-hour shift on a Sunday **once** every six or eight weeks (more often during school holidays, if you can)

As a volunteer, you will be a valued person in a long-established, much-loved Picton attraction, which contributes 100% of its profits to other Picton clubs, groups and organisations. We have a monthly newsletter, strong links with similar societies all over the country, and enjoy a variety of social events with each other (lunches, dinners, BBQs, quiz nights)

Please email us at railandsailpicton@gmail.com, or contact Bob 027 733 1355, or Deb 021 953 900, or Quentin 027 547 9010, or Derek 03 573 5957 if you'd like to be part of this amazing team running a facility that people flock to Picton to experience!



Valuable Outstanding Loyal Untiring Notable Trustworthy Eager Effective Ready Special

Picton Rail and Sail
railandsailpicton@gmail.com



Mediterranean fanworm found in marina

Mediterranean fanworm has been found on the Waikawa Marina infrastructure and seabed.

The four large fanworm (*Sabella spallanzanii*), between 150mm and 400mm, were discovered during Marlborough District Council's regular autumn surveillance and have been removed and destroyed.

The invasive species poses a threat to the Marlborough Sounds due to its ability to form dense colonies that compete with other marine life.

Council is currently undertaking more dive surveillance work to find the extent of the incursion and eDNA sampling was recently completed with no detections.

Mediterranean fanworm, native to the Mediterranean and Atlantic coast of Europe, was first discovered in Marlborough in 2014 on a boat

hull.

It is commonly transferred by attaching itself to hulls, and Marlborough Sounds Marinas are proactive in monitoring this by insisting any vessels coming in from high-risk areas are routinely checked in compliance with marina rules

[Go to the biosecurity page on the Marlborough Marinas website](#)

Large cargo vessels and cruise ships are screened at the border to ensure biofouling is being managed with clearance given by Ministry of Primary industries for a vessel to enter New Zealand waters.

Mediterranean fanworm was first detected in New Zealand in 2008 and is already well established in a number of New Zealand harbours especially in warmer North Island waters.

It is very difficult and expensive to remove and can compete with mussels for food, Council's Senior Biosecurity Officer Liam Falconer said.

"It's already well established in Auckland, the upper North Island and Lyttleton," Liam said. "Fanworm can take hold quickly, if anyone suspects they have seen it, they should contact Council's Biosecurity team immediately.

"Our extensive surveillance programme has

indicated we don't have any established populations in Marlborough and the long-term goal is to keep it that way. It is an offence to knowingly bring Mediterranean fanworm into Marlborough."

[For more information go to the mediterranean fanworm page on our website](#)

New truck park planned for Picton

Trucks waiting for ferries may have an alternative to parking on Picton streets if a facility in Waitohi Domain is built.

Money has been set aside in the Long Term Plan to terminate Port Marlborough's lease of the domain and use it for parking complete with a new ablutions block.

After the Kaikōura earthquake, when State Highway One was closed, Council obtained partial funding from the government to build a temporary truck park on Waitohi Domain which catered for up to 26 truck and trailer units. Once the highway reopened, the land was leased to Port Marlborough.

Since then there have been increasing issues with trucks parking on Picton streets with Council receiving complaints from residents regarding noise at night from refrigerated trucks and safety concerns. Council surveys have found more than 50 trucks and trailer units parked in Picton streets when ferries are delayed.

Transporting New Zealand, the representative



body, said the trucking fraternity needed toilets, showers, a laundry and a place to have a meal.

While the Riverlands Truck Stop near Blenheim provided that, a similar facility was needed closer to the ferry terminal.

An ablutions block with a swipe card system, similar to that used at Riverlands, could be installed with an estimated cost of \$400,000. The cost of terminating the lease with Port Marlborough is \$209,500.

Full complement of iwi representatives on Council committees

The appointment of iwi representatives to all the Marlborough District Council's standing committees continues a long-standing Council commitment to have local iwi at the table.

Welcoming the Iwi Representative appointees prior to today's full Council meeting, Mayor Nadine Taylor said iwi positions on Council committees had been in place for more than 30 years, however

the positions had not always been filled.

"For many years, the mahi was ably undertaken by Richard Hunter and Raymond Smith but their departure after years of dedicated service left us without iwi representation. I am very pleased we now have all three voting positions filled on our Assets and Services, Environment and Planning, and Economic, Finance and Community

committees," Mayor Taylor said.

Council re-committed in December 2022 to fill the vacant seats. The recruitment process took into consideration the request for consistency from Te Taihu Iwi Chairs collective.

The new Iwi Representatives are:

RaNae Niven - Rangitāne o Wairau, Ngāi Tahu, Ngāti Koata, Ngāti Kuia, Te Ātiawa, Ngāti Apa ki Te Rā Tō

Dawn McConnell - Te Ātiawa, Ngāti Tama, Ngāti Mutunga, Ngāti Toa Rangatira, Ngāti Koata

Ruihana Smith - Ngāti Kuia, Ngāti Apa ki Te Rā Tō and Ngāi Tahu

"Our three new appointees between them have broad iwi affiliations, professional qualifications and a wide range of skills and experience. I warmly



New Iwi Representatives welcomed at Council this morning from left are Ruihana Smith, Dawn McConnell and RaNae Niven with Mayor Nadine Taylor (second from right).

welcome them to the table, and we look forward to their valuable contribution," Mayor Taylor said.

Recycle your containers with Council

Marlborough is now a collection point for the Food and Beverage Carton Recycling Scheme (FBCRS).

Council's Solid Waste Manager Mark Lucas said Council's approval by the Packaging Forum as a collection point is great news for the region. Recycled containers can be dropped at the Hazardous Waste Centre in Wither Road, Blenheim or Envirohub in Picton.

"Marlborough can now recycle all manner of food and beverage containers. We currently send 30 tonnes of these packages to landfill each year but now we can divert them if we all work together," Mr Lucas said.

"Once we have sufficient containers - around 600kg - they will be baled and shipped to Hamilton to a company that is turning them into a building product called saveBOARD. One major advantage of this product is that any off cuts can be reprocessed again," he said.

This nationwide initiative is a voluntary product stewardship scheme supported by the users of these containers. For more information go to: <https://fbcarton.recycling.kiwi.nz/>

"Being a product stewardship scheme there is no cost to Council or ratepayers for the transport of the product, but we get the benefit of the landfill



Council's Hazardous Waste Centre is now an approved collection point for containers like these

cost savings," Mr Lucas said.

For the cartons to be accepted they need to be cut open, rinsed and laid flat.

"At the moment we cannot collect these in our kerbside collection but there is work in progress to see if we can get that changed. But we hope to roll out this service to all the transfer stations from

1 July."

govt.nz/services/recycling-and-waste/recycling/food-and-beverage-cartons

For more information go to: www.marlborough.govt.nz.

Two weeks to have your say on LTP and RLTP

Marlburians have a fortnight to have their say on Council's planned expenditure over the next 10 years. Submissions to the Long Term Plan (LTP) 2024-34 close at 5.00 pm on 13 May.

The Marlborough Regional Land Transport Plan (RLTP) 2024-2027 also closes for public submissions at the same time.

Council has so far received 33 submissions to its LTP, on a variety of subjects.

To make a submission go to: <https://links.marlborough.govt.nz/haveyoursay> or visit one of Council's Customer Service Centres.

The LTP is produced every three years and:

- sets out the Council's intended programme of activity for the next ten years.
- details all of the Council's activities and how they contribute to community outcomes.
- describes the levels of service being provided to the community for each activity and sets

performance targets.

- describes the local Council's financial strategy and infrastructure strategy, explaining what it plans to spend over the ten years and how it will pay for its activities.
- describes activities and expenditure in detail for the first three years and outlines performance targets for the next seven years.
- is the Annual Plan for the first of the ten years (2024-25), and is used to determine the rates set for that year.

Councillors Brian Dawson, Deborah Dalliessi and Jamie Arbuckle are hosting a 'find out more about the LTP' meeting at the Marlborough District Library, Te Kahu o Waipuna, Blenheim on Saturday 4 May from 11.00 am to 12.30 pm.

Hearings are timetabled for 10 to 21 June with Council considering all submissions in the week beginning 24 June.

A Cuppa with your Councillors

Council's Sounds-based councillors are available for a drop-in chat each month. Come along to the Waitohi Whare Mātauranga/Picton Library and Service Centre, from 10.00 am until midday (dates below).

22 May
19 June
24 July
21 Aug
18 Sept
23 Oct
20 Nov
18 Dec



Left to right: Cllr Barbara Faulls, Cllr Allanah Burgess, Cllr Raylene Innes, Cllr Ben Minehan

Picton Weekly Events

MONDAY

Picton Walking Group: 9.20am, RSA car park
Te Reo Māori: 10am-12pm, Lib
Cancer Support Group: 10am-12pm, Heartland Services
Writers of Picton: 1.30pm, 1st Monday, Lib
Senior Citizens: 1pm, RSA
Scrabble: 1pm-4pm, Lib
Picton Bridge Club (Beginners): 1pm, Pav, *starting 29/4*
Girl Guides: 6pm-8pm, SJS
Picton Bridge Club (Beginners): 7pm, Pav
Arapawa BoxFit Class: 6.30p-7.30pm, Scout Hall
Sounds Orchestral Ukelele Players: 6.30pm-8.30pm, WBC

TUESDAY

Pilates: 8am-9am, Pav
Plunket: 9.30am-10.30am, Lib
Table Tennis Club: 10am-Noon, PLT
Line Dancing: 10am, Anglican Church Hall
Picton Newcomers Network: 10am-11.00am, 1st Tues, Seabreeze Café
Ladies 18 Holes: 10am-2pm, PGC
Connected (Employment, Education & Training): 10am-2pm, Heartlands Services
Spinners and Knitters: 10.30am-2pm, Lib
Indoor Bowls: 12.45pm-3pm, Pav, *starting 19/3*
Steady As You Go: 1.30pm-2.30pm, Union Parish Centre
Picton Writers Club: 1.30pm 1st Tues of month, Lib
FDF Hip Hop with Fleur: 3:30pm - 6pm, Pav
Picton Sea Swim: 6.00pm, Picton or Waikawa (seasonal)
Taekwon-do: 6.00pm-7.30pm, Picton School
Arapawa Boxing: 6.30pm-7.30pm, Scout Hall

WEDNESDAY

St. Joseph's Catholic Church: Mass 9.30am
Picton Men's Shed: 9am-4pm, Men's Shed
Mixed 9 Holes: 9.30am-12pm, PGC
Tai Chi with Manu: 10am-11am, Pav
The Waitohi Social Club: 10am, 3rd Weds, Lib
Book Chat: 10.30am-11.30am, 2nd Weds, Lib
Picton Poets: 10.30am-12pm, 4th Weds, Lib
Justice of the Peace Drop-in Clinic: 11am-1pm, Lib
Mahjong: 1.00pm, MCCR
After School Fun: 3.30pm-4.30pm, Lib
Junior Badminton: 4.45pm-6pm, QCCG *starting 28/2*
Senior Badminton: 6.30pm-8.30pm, QCCG *starting 28/2*
Picton Quilters: 6.30pm, 2nd Weds, Pav
Waikawa Ratepayers Assoc: 6.00pm, 2nd Weds bimonthly, WBC
Arapawa Boxing: 5.30pm-6.15pm, Picton Scout Hall
Picton Trails Club Rides: 6pm, Pav carpark
Picton Lions (Team): 6.30pm, 1st Weds, The Crow
Arapawa BoxFit Class: 6.30pm-7.30pm, Scout Hall
A Cappella Belles: 7pm, Holy Trinity Church
Quiz Night: 7pm, Picton RSA
Picton Lions (Business): 7.30pm, 3rd Weds, Pav
Sounds Accordionaires: 7.30pm-8.30pm, 62 Moana View Rd

THURSDAY

Picton Playcentre: 9.30am-Noon, 5 Waitohi Place
The Chat Room: 9.30am-11.30am, 2nd & 4th Thurs, Holy Trinity Church
Table Tennis Club: 10am-12pm, Pav
The Company Cafe: 10.30am-11.30am term time, Lib
Mens18 Holes: 11.00am-3pm, PGC
Euchre: 12.30pm-3pm, Lib
Alzhiemers Marlborough Afternoon Tea: 1pm-2pm, 4th Thurs, Lib
Pilates: 4pm-5pm, Pav
Pasifika Beats Fitness with Susana: 5:45pm-6:45pm, Pav
Yurt Yoga at Mount Pleasant: 6pm-7.30pm, Yoga Yurt
Taekwon-do: 6pm-7.30pm, QCCG
Bookworm Bookclub: 6.30pm, 1st Thurs, Lib
Bridge Club: 7pm-10pm, Pav
Bingo: 7pm, WBC

FRIDAY

Yoga with Picton Yoga Collective: 9.15am-10.30am, Pav
Mixed Stableford 9 Holes: 9.30am-12pm, PGC
Picton Amateur Art Group: 10am-2pm, Lib
Tea @ Ten: 10am, 2nd & 4th Fri, MCCR
Under 5's Stories & Craft: 10am-11am, Lib
Welcome In: 11am, 1st Fri, Scoozis Café
Picton Newcomers Network (Sundowners): 5pm-6pm, Cafe Cortado
Picton Wine Club: 6.15pm, 1st Fri, PLT

SATURDAY

Junior Football, Rugby & Cricket: 9am onwards, Pav
Men's Shed: 9am-12pm, Men's Shed
Men's Shed Garage Sale: 9am-12pm, last Sat
Mixed 18 Holes: 11.30am-3.00pm, PGC
Picton Bowling Club: 12.45pm, 25 Kent St
Schnauzer Schmooze: 3pm 1st Sat, Picton Dog Park
St. Joseph's Catholic Church: Mass 5pm (Summer) 4pm (Winter), alternate weekends

SUNDAY

Family worship & communion: 10am, Anglican Church
Word & Communion Service: 9.30am St. Joseph's Catholic Church
Sunday Service: 10am, Union Parish of Picton
Picton Sunday Service: 10am, Baptist Church (zoom available)
Buddhism for Daily Life (Marlborough Group): 10am, 1st Sun, 8 Moana View Rd
Rail and Sail: 11am-3pm, Picton Foreshore
Christian Life Centre Service: 11.30am, 40 Broadway
Schnauzer Schmooze: 3pm, 3rd Sun, Picton Dog Park

[Pav: Port Marlborough Pavilion](#)

[PLT: Picton Little Theatre](#)

[Lib: Picton Library](#)

[WBC: Waikawa Boating Club](#)

[PGC: Picton Golf Club](#)

[QCCG: Queen Charlotte College Gym](#)

[MCCR: Marina Cove Club Room](#)