

Nautical & Coastal Guide





CRUISE GUIDE

TO THE
MARLBOROUGH SOUNDS



**It's like
having a
local on
board!**

The interactive navigational chart gives details on over 350 bays within the Marlborough Sounds, including information on:

- Moorings
- Anchorages
- Point of interest
- Flora and fauna
- Three live camera feeds

Free

Download the maps to your smartphone and take them with you anywhere, any time.

cruiseguide.co.nz



Contents

MDC Harbours	4
Harbour Patrols	5
Working Together for Navigation Safety	5
Speed Cameras	6

Safety Information7

Lifejackets and Why You Should Wear Them	8
Scrolling Signs	9
Kayaks	9
High Risk Buoys	10
High Risk Buoys Guidelines	11
Buoys and Beacons	12
Antenno	14
Blue Light	16
Tory Channel Entrance	17
Navigating in the Pelorus Sound and Havelock	18
How to Navigate Using the Channel Markers	18
Navigating Havelock Channel	19
Navigating the Gut	19
Navigating Okiwi Bay	20
Navigation Lights – Can You Be Seen?	21
Maintaining Your Gear	24

Rules and Bylaws 27

Lifejackets	28
Diving	28
Speed	28
Discharge From Vessels	29
Moving Prohibited Zone Around Ships	29
Moorings	29
Anchoring	30
Navigation Aids (Buoys & Beacons)	30
Large Ships	31
Oil Spills	31
Naming Your Boat	31
Minimum Age	31
Water Ski Lanes	32

Environmental Information 33

Rubbish	34
Marlborough Sounds King Shag	36
Sounds Stories	37
Marlborough Heritage Trails.....	37
Anchoring Advice	39
Marine Mammals	40
Help Protect Our Pest-Free Islands!	41

Tides 2023-2024 43

Nautical & Coastal Guide

Over 10% of New Zealand's coastline is contained within the Marlborough Harbour limits and the area supports a diverse array of on water activities.

The Harbourmaster is appointed by the District Council to ensure the Marlborough Sounds remains a safe and navigable waterway.

This safe boating brochure provides guidance on local navigation Bylaws, useful safety information and daily tide information.



Red line
indicates
Marlborough
harbour limits

Keep a copy
on your boat
and stay
informed.

Harbour Patrols

Throughout the year our patrol vessels are on the water to provide information and advice on maritime safety. Our patrol skippers are friendly, approachable and always happy to have a chat about boat safety.

All harbour patrol teams are warranted enforcement officers with powers relating to the Local Government Act 2002 and the Maritime Transport Act 1994.

If you are stopped on the water you may be asked for your name and address. Please co-operate with this request as you are legally obliged to do so.

Harbour patrol teams wear body mounted cameras to record interactions on the water. Footage is destroyed daily unless it relates to an incident of concern.

Working Together for Navigation Safety

The Harbourmaster needs your help to keep the harbour safe.

If you're involved in an incident on the water or you identify a navigation safety issue that needs attention please contact the Harbourmasters office and let us know. This helps us work out how we can improve safety in the harbour.

**The Harbourmaster's office
can be contacted 24 hours
a day by calling 03 520 7400**



Speed Cameras

Speed Cameras are installed in the Havelock Channel, Picton Marina and Waikawa Marina.

The cameras record a vessel's speed, and it approaches and departs the marina. Vessels exceeding 8 knots in Havelock channel or 5 knots in Picton and Waikawa Marina may be issued an infringement of \$200. These speed cameras have been calibrated to the same standard as similar cameras used by police on the roads and provide robust and clear evidence when a breach has occurred.

Additionally, a mobile camera may be placed in any 'high risk area' as determined by the Harbourmaster.





Safety Information



Lifejackets and Why You Should Wear them



- Lifejackets won't save you unless you wear them.
- Most accidents occur suddenly with no warning – there may be no time to grab a lifejacket, and it is extremely difficult or impossible to put on a lifejacket in the water.
- Many drowning fatalities in Marlborough have occurred in calm conditions less than 200 metres from shore.
- Tell Dad to wear a lifejacket. Men aged 40 plus are over-represented in recreational boating fatalities. Over confidence, a bulletproof attitude and a concern about looking cool are the biggest barriers for men wearing lifejackets.

Lifejacket Tips

- Lifejackets should fit snugly and be fitted with a crotch strap
- Adult lifejackets are not suitable for children as they can easily slip off
- Check all your lifejackets at the start of the season. If there are any signs of deterioration get them serviced or replaced.



For further advice and information on lifejackets visit the Maritime New Zealand website. If you need to know more about lifejackets check with your lifejacket retailer, local coastguard or the Harbourmaster.



Scrolling Signs

Vessels outbound from both Picton and Havelock marinas will notice large scrolling signs delivering a series of safety messages.

Please read these messages as you pass as they may contain information that you need to know.

If you have a good idea for a maritime safety message, please let the Harbourmaster know and we may display it.



Kayaks

Kayaks are often very difficult to see from on-board another vessel. If you are kayaking in the Sounds follow these safety tips:

- Always wear a lifejacket;
- Use highly visible clothing, pole and display a light if kayaking at night
- Stay within 200m of the shore where all vessels must travel at a maximum of 5 knots.



High Risk Buoys

- High Risk Buoys have been established in high risk areas of the Sounds.
- Travelling at speeds in excess of 5 knots in these areas is dangerous.
- Skippers who breach this speed limit will receive a \$200 infringement penalty and/or face criminal prosecution under the Maritime Transport Act 1994.

Locations of High Risk Buoys:

High Risk Buoys with lights have been placed in the following locations. Additional High Risk Buoys may be added in new locations at any time. Contact the harbours office for details.

Anakiwa x2

Aratawa Bay

Arthurs Bay x 2

Bay of Many

Coves x 3

Bob's Bay x 3

Broughton Bay

Cissy Bay

Double Cove x 3

Duncan Bay

Elaine Bay

Fence Bay

Kaiuma Bay

Karaka Point x2

Kumutoto Bay

Lochmara Bay x 3

Mistletoe Bay

Ngakuta Bay x4

Okiwi Bay

Onahau Bay

Penzance Bay

Pirapu Bay

(Ruakaka)

Port Underwood x 2

Portage Bay

Ratimera Bay

Shelly Beach

Te Ipapakareru Bay

Te Mahia Bay x 2

The Snout

Tirimoana

Titoki Bay

Waikawa Bay x 5

Waterfall Bay

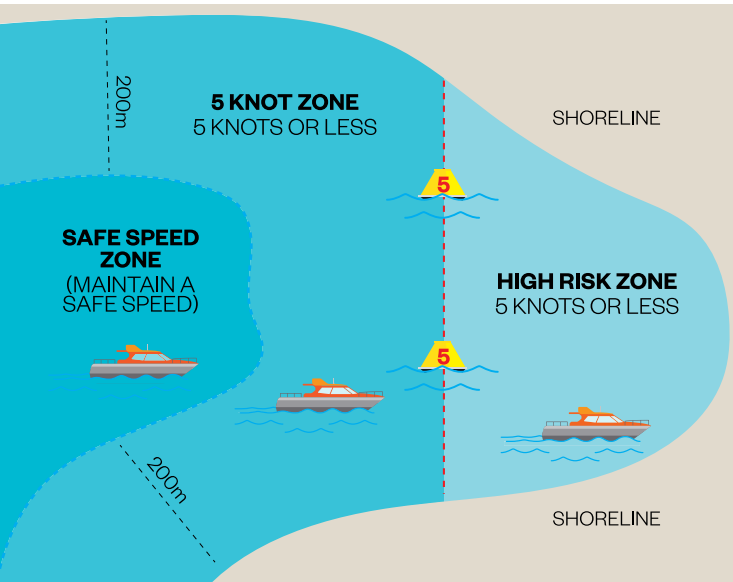
Wedge Point

Whatamango Bay





High Risk Buoys Guidelines



- High Risk Buoys mark high risk zones.
- If you exceed 5 knots in a high risk zone you will be fined \$200 and may face prosecution under the Maritime Transport Act.
- High Risk Buoys are often located less than 200 metres from shore.
- Even if you are seaward of a High Risk Buoy you can be fined \$200 for exceeding 5 knots within 200m of the shore.



Watch a demonstration video on
cruiseguide.co.nz



CRUISE GUIDE

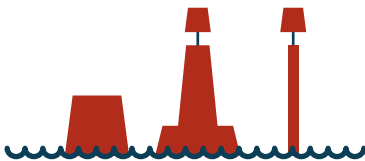
TO THE
MARLBOROUGH SOUNDS

Buoys and Beacons

The buoys and beacons illustrated on the next two pages can be found in various parts of the Marlborough Sounds. You need to know what they mean.

Port-hand Markers

To be passed on your boat's port side when travelling with the buoyage direction.



Colour: Red

Shape: Cylindrical (can), pillar or spar

Topmark (if any): Single red cylinder (can)

Light (when fitted): Red, any rhythm, other than composite group flashing

Starboard-hand Markers

To be passed on your boat's starboard side when travelling with the buoyage direction.



Colour: Green

Shape: Conical, pillar or spar

Topmark (if any): Single green cone

Light (when fitted): Green, any rhythm, other than composite group flashing

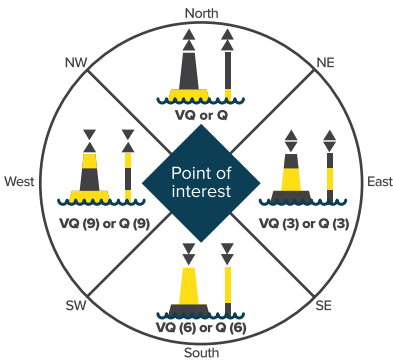


Cardinal Marks

These are used to indicate the side which it is safe to pass a danger (or any other feature or point of interest). They may also show where to find the deepest water in an area, or may draw attention to a bend or junction in a channel, or mark the end of a shoal.

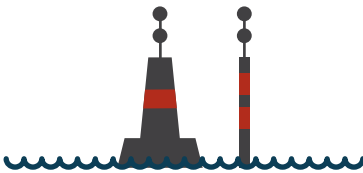
Lights

Cardinal marks may carry a white light which may be quick flashing (50 or 60 flashes per minute), or very quick flashing (100 or 120 flashes per minute) in the characteristics shown below. The concept of 3, 6 and 9 flashes is easily remembered if associated with a clock face.



Isolated Danger Marks

These mark a danger of a small area, with navigable water all around the mark. Use the largest scale chart of the area to confirm the actual extent of the danger, and always pass the mark with a wide clearance.

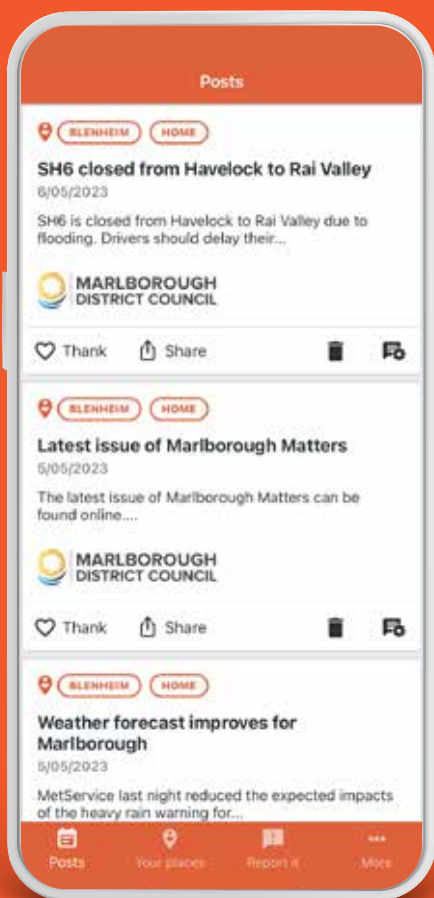


- Colour:** Black with one or more broad horizontal red bands
- Shape:** Optional, but usually a pillar or spar
- Topmark (if any):** Two black spheres, one above the other
- Light (when fitted):** White, group, flashing Fl (2).



Antenno

Be informed. Get involved.





Antenno

Antenno is a notification app that Marlborough District, Nelson City and Tasman District councils use to alert the community to an emergency or a change in service.

You can also report issues to your Council using Antenno. A mobile signal or a connection to the internet is needed to use this app.

Free to install, it's available on Apple and Android smartphones - no personal information or login details are required. You save the locations you want to be informed about, such as your home address, workplace or school. When Council posts an update relevant to your chosen location, you receive a notification.

You can also report issues to Council using the app. As well as general issues, report navigation hazards or other boating/shipping issues.

To download the app go to:

www.marlborough.govt.nz/services/apps



Blue Light

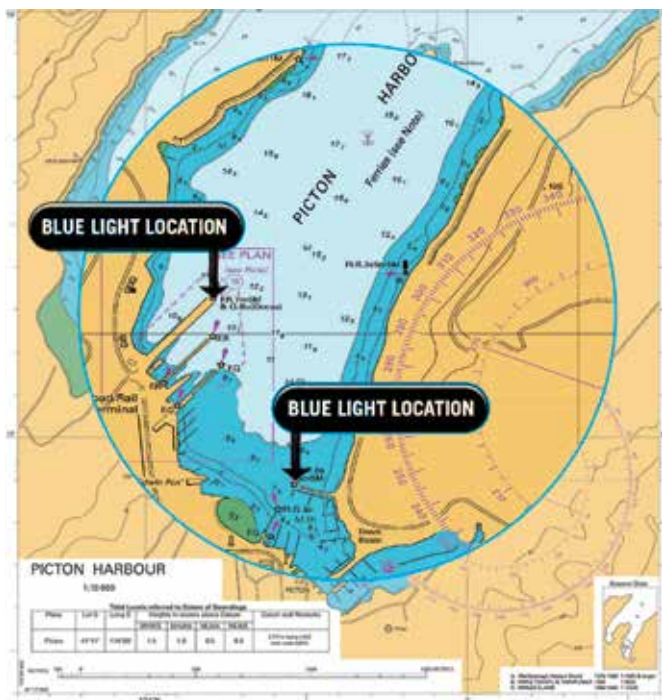
The navigation lights of ferries departing Picton Harbour at night can be difficult to see against the background of shore lights.

To help overcome this problem quick flashing blue lights operate in Picton Harbour every time a ferry departs at night. These lights continue to flash for approximately 10 minutes.

Blue lights are stationed atop a tower on the seaward end of Waitohi Wharf and on the seaward end of the Picton Marina breakwater (see diagram below).

If you are navigating in or near Picton Harbour at night please keep a close eye out for the blue lights.

Ferries give a 10-minute call on Channel 18 prior to departure.





Tory Channel Entrance

The Eastern Tory Channel Entrance presents a number of hazards to the mariner. These include strong tidal streams, limited sea room and a blind corner. In summertime this area may be frequented by as many as twenty four fast moving ships in any given day.

To manage the risk the area has been defined as a Critical Navigation Zone and specific radio practices must be followed:

1. Keep a close listening watch on VHF 18 when in the vicinity of Tory Channel Entrance.
2. Make an 'all ships' radio call on VHF 18 at the reporting points indicated on Chart NZ 6153 or 10 minutes prior to passing East Head.
3. Vessels navigating near Tory Channel Entrance must avoid impeding the passage of transiting vessels.

All Ships Call Example

*All ships, all ships. This is the vessel (name).
The vessel (name) is proceeding outbound from
Tory Channel Entrance and has an ETA at East
Head of (time). I repeat, the vessel (name) is
proceeding outbound from Tory Channel Entrance
and has an ETA at East Head of (time). Vessel
(name) is standing by on channel one eight.*



Navigating in the Pelorus Sound and Havelock

Keep a listening watch with Marlborough-Nelson Marine Radio on VHF 65/01 to hear local navigation warnings.

Blind corners, strong tides and variable depths all make the Havelock Channel a challenge to navigate. Groundings are common in this area. When transiting the Havelock Channel always do the following:

- Check the local tide times and make sure there is enough water depth for your vessel;
- Always follow the marked channel and keep to the right;
- Keep to the speed limits. The speed limit in Havelock Channel is 8 knots from number 8 beacon to the marina;
- Beware of large vessels in the channel;
- Follow the curve of the land when navigating between markers 11 and 13. maintaining a straight line between these points may result in grounding.

How to Navigate Using the Channel Markers

Channel marks are coloured red and green to indicate which side of your vessel you should pass them on.

When proceeding outbound:

Pass the red channel markers on your vessels starboard side; Pass green channel markers to port.

When proceeding inbound:

Pass the red channel markers on your vessels port side; Pass green channel markers to starboard.

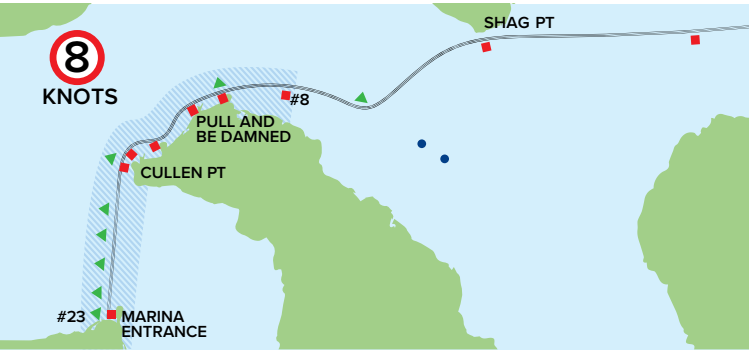




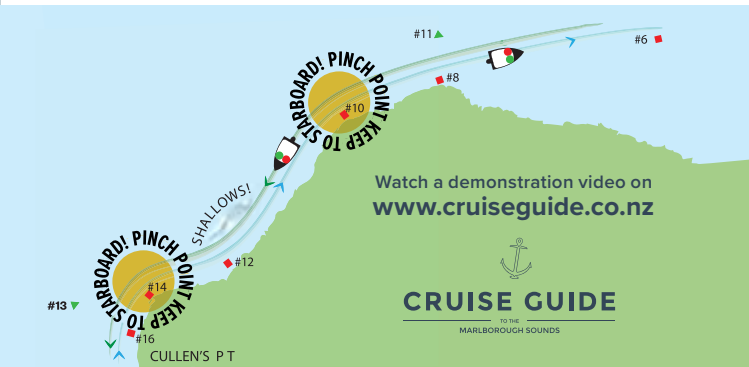
Navigating Havelock Channel

An 8 Knot speed limit applies in the channel from the Marina entrance to beacon #8 (shaded section).

The old leading poles have been restored with blue flashing lights. They give guidance between Beacons 11 to 9.



Navigating the Gut



- A direct line between green channel markers #11 and #13 is not safe. Following this course will lead you onto the wrong side of the channel near the red channel marker #10 and you may run aground near the red channel marker #12.
- Always follow the contours of the land as shown.
- For inbound vessels it is easy to end up on the wrong side of the channel near Cullen point.
- Always Keep to starboard and always keep a good lookout.

Navigating Okiwi Bay

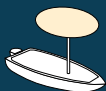




Navigation Lights – Can You Be Seen?

Navigation lights must be shown from sunset to sunrise, and during conditions of restricted visibility.

(Maritime Rule Part 22 Section 2).



Boats of less than 7 metres length and not capable of more than 7 knots including kayaks and paddlecraft may carry navigation lights or simply display an all-round white light.



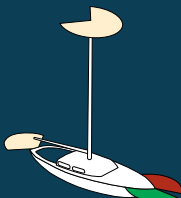
Powerboats, underway, less than 12 metres in length may combine their stern and masthead lights into a single all-round white masthead light. The boat should also have red and green side lights.



Powerboats greater than 12 metres in length should show a white masthead light, red and green side lights and a white stern light.



Sailing boats, underway, (not using power) must show sidelights and a stern light. These may be combined into a tri-colour lantern at the top of the mast on vessels less than 20 metres in length.



Sailing boats under auxiliary motor power should display their sidelights and stern light as well as a masthead light. You should not use a tri-colour lantern when motoring.

5 SIMPLE RULES

TO HELP YOU STAY SAFE



1. LIFE JACKETS

Take them- Wear them.

Boats, especially ones under 6m in length can sink very quickly. Wearing a life jacket increases your survival time in the water.

2. SKIPPER RESPONSIBILITY

The skipper is responsible for the safety of everyone on board and for the safe operation of the boat. Stay within the limits of your vessel and your experience.

3. COMMUNICATIONS

Take two separate waterproof ways of communicating so we can help you if you get into difficulties.

4. MARINE WEATHER

New Zealand's weather can be highly unpredictable. Check the local marine weather forecast before you go and expect both weather and sea state changes.

5. AVOID ALCOHOL

Safe boating and alcohol do not mix. Things can change quickly on the water. You need to stay alert and aware.

For more information about safe boating education and how to prepare for your boating activity visit www.martimenz.govt.nz



MARINE FARMING ASSOCIATION

To Promote & Nurture Sustainable Marine Farming

You are welcome to tie up to a mussel farm to fish
(many say its the best spot)

When navigating near mussel farms you need to know the following:

- Always keep a good lookout
- Never exceed 5 knots when navigating around mussel farms
- Avoid entering mussel farms at night
- Orange floats mark the ends of each mussel line
- At night, mussel farms are marked with yellow flashing lights. The light sequence is a group of 5 flashes every 20 seconds. Fl (5) 20s
- Please loop a rope through the handle of a black or orange float (not lights / navigational aids)
- Don't tie onto the backbone or growing ropes as you will chafe the ropes
- Don't fish through the lines between the floats
- Keep propellers well away from the lines, propellers are like knives

If you find a float - it's a marine farmers' property.
Please call **03 578 5044** to alert us.

Boaties - Please ensure your hull is free from unwanted organisms before entering Sounds waters.

If you have any concerns about environmental issues at a Marine Farm call the **MFA** on **03 578 5044**



Maintain Your Gear

Engines

A breakdown at sea can cost you time, money and even your life. Have your engine professionally serviced at the start of the season, establish a regular maintenance routine and always check your fuels and oil on departure.

Communication

Make sure you can get help when you need it. A VHF radio is the best way to call for assistance at sea. If you're relying on a cell phone, keep it in a waterproof bag and check coverage before departure.

Safety Gear

Take a look over all your safety gear at the start of the season. Our patrol staff can offer free advice on what gear you should have on board.

Diving

Keep your equipment in good condition. If you've not used it in a while get it checked by a reputable service agent.



**YOUR ONE-STOP SHOP!
BOAT MOTOR SERVICES
DIVE GEAR
RETAIL &
RENTAL**



- ✓ **OUTBOARD & INBOARD BOAT MOTOR SERVICING**
- ✓ **DIVE EQUIPMENT & ACCESSORIES**
including certified air fills and cylinder testing

Ph. 03 573 8243
Rear unit 2 (dive centre)
unit 3 (boat motor servicing)
Waikawa Marina, Picton

boatmarl@xtra.co.nz
www.boatingmarlborough.co.nz
waikawadive@xtra.co.nz
www.waikawadivecentre.co.nz



COASTGUARD MARLBOROUGH helping you 'stay safe in the sounds'

Coastguard Marlborough is a volunteer organization whose prime focus is saving lives at sea.

We're part of a strategically created national network covering New Zealand's coastline and major lakes and are New Zealand's primary marine search & rescue organization.

We work closely with St John to provide New Zealand's only Marine Ambulance service. We also provide on water transport for Police, the Fire and Emergency New Zealand, & other emergency services in the Marlborough area.

**Our volunteers are here to help
24 hours a day, 7 days a week.**

IN AN EMERGENCY

- Call 111 & ask for the emergency service you require.
- Broadcast a Mayday or Pan Pan on Marine VHF channel 16
- **Contact Marlborough-Nelson Marine Radio** on the appropriate VHF frequency & ask them to call 111



Marlborough-Nelson Marine Radio Association Inc

provides marine communication facilities throughout the Marlborough Sounds, Tasman Bay, Golden Bay and Cook Strait southwards to Clarence. The Association's primary purpose is to offer safety through VHF radio communication plus, assistance to the boating fraternity.

For more information on becoming a member and access to the Association's channels and services please phone 03 573 8851 or visit www.marineradio.org.nz

The following Marlborough-Nelson Radio VHF channels are monitored daily between 0700 and 2200 hours:

Channel 01	Cook Strait, Marlborough Sounds area
Channel 04	Tasman Bay area
Channel 05	Cape Campbell to Waipapa Point
Channel 60	Golden Bay area
Channel 63	Queen Charlotte Sound, Cook Strait
Channel 65	Pelorus Sound, Kenepuru Sound areas

Channels 04, 60 and 65 are permanently linked.

Channels 05 and 63 are permanently linked.

Channel 05: Ward

The channel 05 repeater to the east of Ward has now been commissioned and is permanently linked to channel 63.

Contacting the Marlborough-Nelson Radio Operator

To contact the operator to place a trip report, get an updated weather forecast, etc, please call Marlborough-Nelson Radio and the channel number. For example, on channel 65, call "Marlborough-Nelson Radio six -five".

Marlborough-Nelson Radio Weather Broadcasts:

Marine weather forecasts and tides are broadcast daily on all of the Association's channels commencing at approximately 0835, 1135, 1335, 1735. Safety messages and navigation warnings are also broadcast throughout the day.



Rules and Bylaws



Lifejackets

- All recreational vessels are required to carry enough lifejackets for everyone on board. Lifejackets must be the correct size for the people on-board and easily accessible at all times.
- This rule applies to vessels of all sizes including kayaks and paddleboards. If you don't have the correct number of lifejackets on-board expect a \$200 fine.

Diving

All vessels engaged in diving operations must display a dive flag of 600mm x 600mm and preferably of rigid construction.



Speed

A 5 knot speed limit applies when operating a vessel:

- within 50m of any vessel, raft, or person in the water;
- within 200m of the shore or any structure;
- within 200m of a vessel or craft displaying a dive flag – international code flag A;
- with a person sitting on the bow or overhanging the bow.

Exemptions to the 5 knot rule occur when towing skiers in water-ski lanes or when the Bylaw has been uplifted for an event such as a power boat race.

5 knot buoys mark high risk areas where excessive speed is a threat to life and property.

Vessels that exceed the speed limit in these areas will face penalties.

**STICK TO THE
5 KNOT RULE**





Discharge From vessels

Under the Resource management (Marine Pollution) Regulations (1998) there are rules around the discharge of sewage waste into the coastal marine area.

It is prohibited to discharge sewage:

- closer than 500 metres to the shore
- closer than 1000 metres to a marine farm
- in shallow water (less than 5 metres)
- within 200 metres of Long Island marine reserve
- within 500 metres (0.27 nautical miles) of a mataitai reserve.

Discharging sewage is still permitted in some areas of the sounds however have you considered installing holding tanks on your vessel?

For those who have holding tanks there are pump out facilities free to use adjacent to the fuel berths at Waikawa, Picton and Havelock marinas.

Moving Prohibited Zone Around Ships

No vessel may enter an area extending 500m ahead and 50m either side or astern of a ship underway.

A ship is defined as any vessel over 500 gross tonnes and includes all interisland ferries, log ships, cruise ships and many large commercial fishing boats and super yachts.

Moorings

No person may obstruct access to a mooring. Any vessels secured to a mooring must have the permission of the mooring owner.

Remember, it is unsafe to attach your vessel to a mooring if you are not aware of the holding capacity of the mooring or when it was last serviced.

If you own a mooring please make sure your mooring number is visible on the float and your contact details logged with council are up to date. That way, we know how to contact you should your boat run into trouble on its mooring.

Anchoring

Anchoring is permitted in most areas of the Sounds however:

- Anchoring is prohibited within Picton Harbour inside a line from Wedge Point to the Snout and around Perano Shoal.
- In Waikawa Bay, vessels must not anchor within the sectors of the marina leading lights;
- The quarantine anchorage on the western side of Mabel Island can only be used with permission from the Harbourmaster;
- No vessel may anchor in a location that obstructs access to a maritime facility or endangers other vessels, recreational craft or water users;
- Look for triangular shore markers and check charts for submarine cables before dropping anchor. Any cables accidentally lifted should be reported to Chorus NZ Limited.



Navigation Aids (Buoys & Beacons)

Tying up to a navigation aid is prohibited.

Vessel operators who breach this Bylaw will face infringement costs plus the costs of an engineering report to determine the integrity of the navigation aid.





Large Ships

When transiting through the Marlborough Sounds the path of large vessels over 500 Gross tonnes must not be impeded by smaller vessels of any type.

Oil Spills

Oil spills on the water must be reported to the Harbourmaster.

Please call 520 7400 (24 hrs) to report a spill. Alternatively advise Picton Harbour Radio on VHF 18 or Marlborough-Nelson Marine Radio on VHF 01 or 65.

It is an offence to discharge any oil products at sea and fines can be severe. Please only discharge oily waste at approved sites in the marinas.

Naming Your Boat

In the Marlborough Sounds you are required to mark your vessel with a name or similar identifying mark such as a call sign.

This must be displayed in such a way as to be clearly visible from 50m. As a guide, the Harbourmaster suggests a minimum character height of 90mm. Small vessels powered with oars or paddles are only required to have the owners name and address marked somewhere on the hull.

Minimum Age

No person under 15 years of age may operate a power driven boat that is capable of exceeding 10 knots.



Water Ski Lanes

Water ski access lanes allow waterskiers to enjoy high speed access to and from the shore. Lanes are marked with orange and black posts on the shore in the following locations:

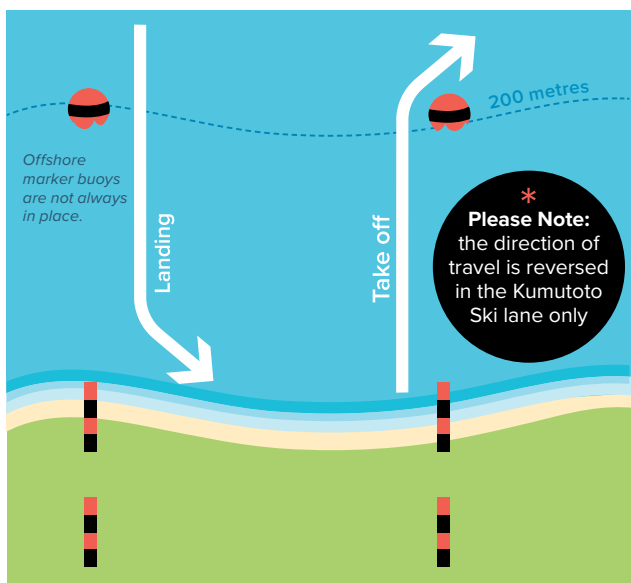
Queen Charlotte Sound

- Bottle Bay
- Umungata Bay (Davie's Bay)
- Kaipakirikiri Bay
- Kumutoto Bay *
- Ngakuta

Kenepuru Sound

- Te Mahia Bay
- Double Beach
- Worlds End

General Rules for Access Lanes



Water ski lanes can only be used in daylight and when;

- towing a water skier, wakeboard, biscuit etc
- a lookout other than the skipper is on-board
- it is safe to do so.

Refer to MDC navigation bylaws 3.6 and 3.7 for full details.

Watch a demonstration video on
www.cruiseguide.co.nz





Environmental Information



IMAGE COURTESY
OF ROB DAVIDSON

Rubbish

We need to protect and care for our natural environment and recreational facilities so we can all continue to enjoy the great outdoors. No-one likes to see rubbish in the Marlborough Sounds; either on the land or in the water.

The Department of Conservation operates a "pack it in, pack it out" policy in the Sounds. Rubbish removal is the responsibility of the visitor.

Please use the rubbish facilities listed on these pages whenever you have waste to get rid of.

Think about what you really need to take with you on your boating outing. Recycling facilities are much easier to find in large urban centres so transfer food items into reusable containers and leave the cardboard boxes, tin cans and plastic bags in your household recycling bins, or take them to the recycling facilities at transfer stations.

Take rubbish bags with you and clean any disposable containers in your dish-wash water before placing them in the bag. This helps reduce odours which may mean fewer trips to rubbish disposal facilities.

Lastly, if you come across someone else's rubbish, be part of the rubbish solution by picking it up and putting it in your rubbish bag for disposal at one of the Port or Council facilities.



**Pack it in
Pack it out**



Marlborough Marinas Waste Collections

	RUBBISH COLLECTION	GLASS RECYCLING	ALUMINIUM CAN RECYCLING	WASTE OIL	HUMAN WASTE PUMPOUT
WAIKAWA MARINA	Blue wheelie bins located throughout the marinas	Adjacent trailer-boat washdown areas at each marina	Adjacent eastern male toilet block	Adjacent eastern male toilet block. Adjacent 3W toilet block.	All fuel jetties
PICTON MARINA			Adjacent trailer-boat washdown	Adjacent trailer-boat washdown	
HAVELOCK MARINA			Jetties 2 and 3	Adjacent boatsheds 49 & 50	

Rubbish & Recycling Facilities Marlborough Sounds



	SITE	RECYCLING	OPEN HOURS	RUBBISH DISPOSAL
PICTON TRANSFER STATION	Gravesend Place, Picton (near start of Queen Charlotte Drive)	Yes	Weekdays 8 am - 4 pm Sat 8 am - 12 pm Sun 12 pm - 4 pm	\$64.33 (incl GST) per cubic metre* * These rates are reviewed each year and any changes implemented with effect from the 1 July.
HAVELOCK TRANSFER STATION	Queen Charlotte Drive (next to Kaituna River)	Yes	Weekdays 8 am - 2 pm Sat and Sun 12 pm - 4 pm	
RAI VALLEY TRANSFER STATION	Ronga Road (near turn-off to Okiwi Bay)	Yes	Tues 9 am - 12 pm Fri 9 am - 12 pm Sun 1 pm - 4 pm	
RAI VALLEY COINSKIP	Next to Rai Valley Transfer Station	No	Accessible at all times	\$6per load (2x60 litre rubbish bags)
OHINGAROA COINSKIP	Kenepuru Road at Ohingaroa Hill	No	Accessible at all times	
PORTAGE COINSKIP	Kenepuru Road at Portage	No	Accessible at all times	
THE GROVE COINSKIP	Queen Charlotte Drive at The Grove	No	Accessible at all times	
PICTON MARINA (SE OF COAT HANGAR BRIDGE)	South East of coat hangar bridge	No	Accessible at all times	For use by Marlborough residents and visitors returning to Picton by boat - Bagged domestic waste only

Kawau Pāteketeke

The King Shag

Kings shags are very rare seabirds. There are only about 850 of them in the world and they all live in the Marlborough Sounds.

They are generally found in outer areas where they have nesting colonies on rocky outcrops and cliffs.

The common pied shag that is often seen nesting in trees around Marlborough is often mistaken for the King Shag however the King Shag does not roost in trees. The King Shag is also very wary of humans and unlike other shag species will not approach people or boats.



How to Identify the King Shag

- Black & white plumage which is browner juvenile birds
- White wing patch, especially noticeable when in flight
- Black feathers on head reaching below bill giving the appearance of a darker head compared to a Pied Shag
- Pink legs & feet
- Tends to swim away from you flicking its head from side to side

Help Protect The Kawau Pāteketeke

If you are approaching a King Shag or a King Shag colony – you should;

- Reduce your speed
- Reduce noise
- Keep your distance (at least 200m)



Sounds Stories

Sounds stories is a series of stories about the lives of some of the amazing people who call the Marlborough Sounds home.

Follow the qr code to the MDC website where you can read stories about farming, fishing and forestry from around the Sounds and beyond. These stories are bound to ignite the imagination of what it would have been like to grow up around the vibrant maritime economy of the Sounds



Image courtesy of Jim Tannock

Marlborough Heritage Trails

Whether the rain is coming down and you're sick of boardgames, or you are inspired by history, follow the QR code to the Marlborough Heritage Trails and you are bound to find something to pique your interest.

Marlborough's history is the stuff of legend, full of stories with local, national and international significance. Preserved and shared by groups of heritage heroes, we have called on them to guide you through Marlborough's extraordinary past.



Image courtesy of Jim Tannock



COMING INTO THE MARLBOROUGH SOUNDS FROM ANOTHER PART OF NZ?

Heading off after your vessel
has been laid up for a while?

**Please ensure your vessel hull is clean before
setting off.**

Harmful marine pests such as *Mediterranean fanworm*, love to hitch-hike on vessels. They take up residence in new areas and can cause permanent change to the marine environment.

- ✓ Improve speed
- ✓ Save fuel
- ✓ Protect the marine environment

For further information contact:
biosecurity@marlborough.govt.nz
03 520 7400



**MARLBOROUGH
DISTRICT COUNCIL**



Anchoring Advice

MDC has rules in the proposed Marlborough Environment Plan that aim to protect areas of important marine biodiversity on the seafloor.

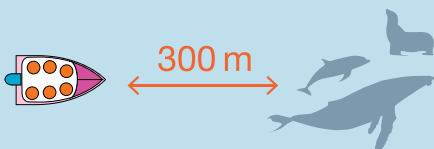


- Anchoring is permitted in most areas of the sounds however consider this advice when anchoring:
- Is it necessary to anchor?
If you are fishing could you be drift fishing instead?
- Make a plan of where you will anchor - where possible, anchor in sand or mud away from reefs and other fragile marine environments. Suitable areas often show up as flat and smooth on your sounder.
- Check the cruiseguide app to find advice on the best anchoring locations.
- Think about your swing circle and anchor a safe distance from other boats.
- If anchoring ashore, carefully place the anchor to minimise damage.
- If anchoring overnight, anchor before nightfall and double check the swing room.
- Use an anchor light at night.
- When stern tying, make sure you tie to a secure point ashore using a strong line.
- Carry enough chain and line for the depth you want to anchor in and use only as much chain as you need to hold the vessel safely.
- Motor towards the anchor when hauling it in and retrieve the anchor when the line is vertical.
- If the anchor is caught on a reef, free it by hand wherever possible.
- Do not force the anchor free by motoring forward.
- Keep watch to make sure the anchor isn't dragging.

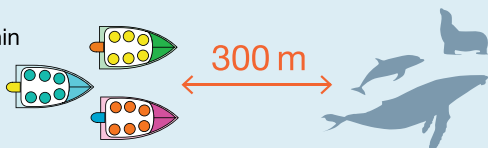
See page 30 of this brochure for anchoring rules.

Simple rules when interacting with marine mammals

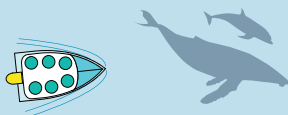
Don't travel faster than idle or 'no wake' speed within 300 metres



No more than 3 vessels within 300 metres



Do not obstruct their path. Approach from a parallel/ slightly rear direction



Do not swim with dolphin pods containing juveniles



Stay 50 metres away from any whale or orca



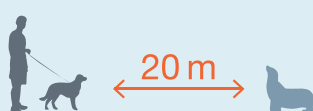
Stay 200 metres away from any baleen/sperm whale with a calf



Do not swim with whales or orca



Stay 20m away from seals on shore. Dogs on a lead at all times.



www.doc.govt.nz/sharingcoasts

DOC HOTline
0800 362 468
Report any safety hazards or conservation emergencies
For Fire and Search and Rescue Call 111



Help Protect Our Pest-Free Islands!



Department of
Conservation
Te Papa Atawhai

If you are visiting a pest free island please check your gear for pests before you leave the mainland.

1. Check that your vessel and gear is free of rats, mice, ants, skinks and weed seeds - especially camping gear which has ideal places for pests to hide when stored.
2. Take extra care to clean gear if you have Argentine ants or rainbow skinks where you live.
3. Clean clothing, footwear and camping gear, removing soil and seeds before and after each trip.
4. Look out for cleaning stations at the pier and scrub your shoes before boarding.
5. Keep fresh bait and/or set traps on your vessel and in the area it is stored.



MARLBOROUGH SOUNDS MARINAS - PICTON, HAVELOCK & WAIKAWA

Our three world-class marinas offer berths, boat sheds and trailer-boat storage on a casual, short-term or long-term basis. Our team of friendly and knowledgeable staff are happy to help seven days per week.



For news, weather and information, please see our website marlboroughmarinas.co.nz

Picton Marina

+64 21 704 920
picton@msmarinas.co.nz

Havelock Marina

+64 21 242 9165
havelock@msmarinas.co.nz

Waikawa Marina

+64 21 222 9512
waikawa@msmarinas.co.nz



Tides 2023-24

Proudly brought to you by Marlborough Sounds Marinas



Times listed have been adjusted for N.Z.
Daylight time as required.

The tide predictions have been sourced from Land Information New Zealand. MDC accepts no liability for any direct, indirect, consequential, or incidental damages that result from any errors in the information.

	PICTON		HAVELOCK		TE AUMITI (FRENCH PASS)	
October 2023						
DATE	TIME	HT	TIME	HT	TIME	DIR
Su 1	4:17	0.1	5:08	0.3	2:47	SW
	11:31	1.6	11:51	3.1	9:36	NE
	16:46	0.1	17:42	0.2	15:12	SW
	23:34	1.7	23:56	3.2	21:47	NE
Mo 2	4:53	0.1	5:45	0.3	3:29	SW
	12:03	1.6	12:27	3.1	10:21	NE
	17:21	0	18:15	0.3	15:51	SW
				22:32	NE	
Tu 3	0:06	1.7	0:32	3.1	4:10	SW
	5:29	0.1	6:21	0.3	11:07	NE
	12:31	1.6	13:02	3	16:30	SW
	17:55	0.1	18:49	0.4	23:21	NE
We 4	0:36	1.6	1:09	2.9	4:50	SW
	6:04	0.1	6:57	0.5	11:53	NE
	12:56	1.5	13:35	2.9	17:11	SW
	18:30	0.1	19:24	0.5		
Th 5	1:06	1.5	1:47	2.7	0:14	NE
	6:40	0.2	7:33	0.6	5:31	SW
	13:19	1.5	14:09	2.7	12:43	NE
	19:05	0.2	20:01	0.7	17:57	SW
Fr 6	1:35	1.4	2:27	2.5	1:13	NE
	7:18	0.3	8:11	0.8	6:15	SW
	13:42	1.4	14:44	2.5	13:38	NE
	19:45	0.4	20:46	1	18:59	SW
Sa 7	2:09	1.2	3:14	2.3	2:19	NE
	7:59	0.4	8:54	1	7:09	SW
	14:07	1.3	15:26	2.2	14:50	NE
	20:37	0.5	21:48	1.2	20:29	SW
Su 8	2:53	1.1	4:16	2.1	3:34	NE
	8:48	0.5	9:46	1.2	8:22	SW
	14:40	1.2	16:56	2.1	16:26	NE
	22:13	0.6	23:37	1.3	21:52	SW
Mo 9	4:02	1	5:45	2	4:48	NE
	10:02	0.6	10:59	1.3	9:56	SW
	15:35	1	19:14	2.1	17:46	NE
				22:52	SW	
Tu 10	0:01	0.6	1:18	1.2	5:48	NE
	6:10	1	7:14	2.1	11:11	SW
	11:41	0.7	13:11	1.3	18:30	NE
	20:09	1.1	20:20	2.3	23:39	SW
We 11	1:13	0.5	2:10	1	6:33	NE
	8:05	1.1	8:21	2.2	12:02	SW
	13:10	0.6	14:40	1.1	19:01	NE
	20:54	1.2	21:02	2.5		
Th 12	2:04	0.4	2:49	0.8	0:17	SW
	9:00	1.2	9:10	2.4	7:09	NE
	14:16	0.5	15:18	0.9	12:42	SW
	21:27	1.3	21:37	2.7	19:29	NE
Fr 13	2:45	0.3	3:22	0.7	0:53	SW
	9:39	1.3	9:51	2.6	7:41	NE
	15:00	0.4	15:48	0.7	13:16	SW
	21:56	1.4	22:10	2.8	19:56	NE
Sa 14	3:19	0.3	3:53	0.5	1:27	SW
	10:12	1.4	10:28	2.8	8:12	NE
	15:34	0.3	16:16	0.6	13:46	SW
	22:23	1.5	22:41	2.9	20:25	NE



	PICTON		HAVELOCK		TE AUMITI (FRENCH PASS)	
October 2023						
DATE	TIME	HT	TIME	HT	TIME	DIR
Su 15	3:50	0.2	4:25	0.4	2:00	SW
	10:42	1.5	11:03	2.9	8:45	NE
	16:04	0.2	16:46	0.4	14:16	SW
	22:50	1.6	23:12	3	20:55	NE
Mo 16	4:20	0.1	4:58	0.4	2:34	SW
	11:12	1.6	11:36	3	9:18	NE
	16:32	0.1	17:17	0.3	14:47	SW
	23:17	1.6	23:44	3	21:27	NE
Tu 17	4:50	0.1	5:33	0.3	3:09	SW
	11:41	1.6	12:08	3	9:54	NE
	17:01	0.1	17:50	0.3	15:19	SW
	23:45	1.5			22:05	NE
We 18	5:20	0.1	0:15	2.9	3:45	SW
	12:10	1.6	6:08	0.4	10:33	NE
	17:32	0.1	12:41	3	15:54	SW
			18:24	0.4	22:47	NE
Th 19	0:14	1.5	0:48	2.8	4:24	SW
	5:53	0.2	6:45	0.4	11:15	NE
	12:39	1.6	13:14	2.9	16:32	SW
	18:05	0.1	19:00	0.5	23:37	NE
Fr 20	0:45	1.4	1:23	2.7	5:07	SW
	6:28	0.2	7:24	0.6	12:04	NE
	13:10	1.5	13:49	2.8	17:19	SW
	18:41	0.2	19:41	0.6		
Sa 21	1:18	1.3	2:04	2.5	0:39	NE
	7:07	0.3	8:07	0.7	5:57	SW
	13:42	1.4	14:29	2.6	13:03	NE
	19:23	0.3	20:29	0.8	18:18	SW
Su 22	1:57	1.2	2:53	2.3	1:55	NE
	7:52	0.4	8:57	0.9	6:57	SW
	14:21	1.3	15:21	2.4	14:18	NE
	20:17	0.4	21:32	1	19:42	SW
Mo 23	2:52	1.1	4:00	2.2	3:19	NE
	8:52	0.5	10:01	1.1	8:12	SW
	15:17	1.2	16:46	2.3	15:49	NE
	21:40	0.5	22:59	1.1	21:14	SW
Tu 24	4:50	1	5:43	2.1	4:38	NE
	10:19	0.6	11:32	1.2	9:37	SW
	17:32	1.1	18:40	2.3	17:10	NE
	23:24	0.5			22:24	SW
We 25	7:03	1	0:35	1	5:41	NE
	11:57	0.6	7:21	2.2	10:51	SW
	19:27	1.2	13:26	1.1	18:05	NE
			19:55	2.5	23:21	SW
Th 26	0:44	0.5	1:45	0.8	6:30	NE
	8:20	1.2	8:31	2.4	11:50	SW
	13:19	0.5	14:38	0.9	18:46	NE
	20:29	1.4	20:49	2.7		
Fr 27	1:42	0.4	2:37	0.7	0:10	SW
	9:12	1.3	9:25	2.6	7:12	NE
	14:20	0.4	15:27	0.6	12:40	SW
	21:16	1.5	21:33	2.9	19:23	NE
Sa 28	2:29	0.3	3:22	0.5	0:56	SW
	9:55	1.4	10:10	2.8	7:52	NE
	15:07	0.2	16:07	0.5	13:26	SW
	21:56	1.6	22:14	3.1	20:00	NE

	PICTON		HAVELOCK		TE AUMITI (FRENCH PASS)	
October 2023						
DATE	TIME	HT	TIME	HT	TIME	DIR
Su 29	3:10	0.2	4:02	0.4	1:41	SW
	10:33	1.5	10:50	3	8:31	NE
	15:47	0.1	16:43	0.3	14:08	SW
	22:32	1.6	22:53	3.1	20:38	NE
Mo 30	3:49	0.1	4:41	0.4	2:24	SW
	11:07	1.6	11:28	3	9:11	NE
	16:23	0.1	17:17	0.3	14:47	SW
	23:06	1.6	23:31	3.1	21:19	NE
Tu 31	4:27	0.1	5:18	0.4	3:06	SW
	11:38	1.6	12:04	3	9:54	NE
	16:58	0.1	17:51	0.3	15:26	SW
	23:37	1.6			22:03	NE

November 2023						
We 1	5:03	0.1	0:08	3	3:46	SW
	12:06	1.6	5:54	0.4	10:37	NE
	17:33	0.1	12:39	3	16:05	SW
			18:24	0.4	22:51	NE
Th 2	0:07	1.5	0:45	2.8	4:25	SW
	5:40	0.2	6:30	0.5	11:22	NE
	12:32	1.5	13:13	2.8	16:45	SW
	18:07	0.2	18:59	0.6	23:42	NE
Fr 3	0:36	1.4	1:24	2.7	5:05	SW
	6:17	0.2	7:07	0.7	12:09	NE
	12:56	1.5	13:46	2.7	17:31	SW
	18:44	0.2	19:37	0.8		
Sa 4	1:07	1.3	2:04	2.5	0:40	NE
	6:55	0.3	7:44	0.8	5:48	SW
	13:21	1.4	14:21	2.5	13:04	NE
	19:23	0.4	20:21	1	18:28	SW
Su 5	1:43	1.2	2:50	2.3	1:46	NE
	7:36	0.4	8:26	1	6:38	SW
	13:50	1.3	15:02	2.3	14:10	NE
	20:13	0.5	21:18	1.1	19:44	SW
Mo 6	2:29	1.1	3:44	2.1	2:57	NE
	8:25	0.5	9:14	1.1	7:41	SW
	14:27	1.2	16:07	2.1	15:34	NE
	21:31	0.6	22:39	1.2	21:02	SW
Tu 7	3:35	1	4:56	2	4:08	NE
	9:32	0.6	10:18	1.3	8:59	SW
	15:30	1.1	18:06	2.1	16:55	NE
	23:08	0.6			22:03	SW
We 8	5:20	1	0:12	1.2	5:10	NE
	11:01	0.7	6:19	2.1	10:16	SW
	18:41	1.1	11:49	1.3	17:48	NE
			19:25	2.2	22:52	SW
Th 9	0:22	0.5	1:12	1	5:59	NE
	7:07	1.1	7:32	2.2	11:15	SW
	12:28	0.6	13:30	1.2	18:24	NE
	19:54	1.2	20:15	2.4	23:36	SW
Fr 10	1:17	0.5	1:57	0.9	6:38	NE
	8:14	1.2	8:29	2.4	12:00	SW
	13:36	0.5	14:27	1	18:55	NE
	20:37	1.3	20:56	2.6		



	PICTON		HAVELOCK		TE AUMITI (FRENCH PASS)	
November 2023						
DATE	TIME	HT	TIME	HT	TIME	DIR
Sa 11	2:02	0.4	2:37	0.7	0:14	SW
	9:01	1.3	9:16	2.6	7:12	NE
	14:24	0.4	15:07	0.8	12:38	SW
	21:13	1.4	21:33	2.7	19:24	NE
Su 12	2:41	0.3	3:15	0.6	0:52	SW
	9:39	1.4	9:57	2.7	7:45	NE
	15:02	0.3	15:43	0.6	13:13	SW
	21:46	1.4	22:09	2.8	19:53	NE
Mo 13	3:16	0.3	3:53	0.5	1:30	SW
	10:14	1.5	10:36	2.9	8:18	NE
	15:35	0.2	16:18	0.5	13:47	SW
	22:18	1.5	22:45	2.9	20:25	NE
Tu 14	3:50	0.2	4:31	0.4	2:08	SW
	10:47	1.5	11:13	3	8:53	NE
	16:08	0.2	16:53	0.4	14:22	SW
	22:51	1.5	23:21	2.9	21:02	NE
We 15	4:24	0.2	5:10	0.4	2:48	SW
	11:20	1.6	11:49	3	9:32	NE
	16:41	0.1	17:29	0.4	14:59	SW
	23:24	1.5	23:58	2.9	21:44	NE
Th 16	5:00	0.2	5:50	0.4	3:29	SW
	11:53	1.6	12:25	3	10:13	NE
	17:15	0.1	18:07	0.4	15:40	SW
	23:59	1.4			22:33	NE
Fr 17	5:37	0.2	0:36	2.8	4:14	SW
	12:27	1.6	6:30	0.5	11:01	NE
	17:52	0.1	13:02	3	16:24	SW
			18:47	0.5	23:30	NE
Sa 18	0:36	1.4	1:17	2.6	5:01	SW
	6:16	0.3	7:12	0.6	11:55	NE
	13:02	1.5	13:41	2.8	17:15	SW
	18:32	0.2	19:31	0.6		
Su 19	1:17	1.3	2:02	2.5	0:37	NE
	6:59	0.3	7:57	0.7	5:52	SW
	13:40	1.4	14:25	2.7	12:57	NE
	19:18	0.3	20:21	0.8	18:18	SW
Mo 20	2:05	1.2	2:53	2.4	1:50	NE
	7:48	0.4	8:48	0.9	6:50	SW
	14:26	1.3	15:18	2.5	14:10	NE
	20:14	0.4	21:23	0.9	19:32	SW
Tu 21	3:10	1.1	3:56	2.3	3:06	NE
	8:48	0.5	9:49	1	7:57	SW
	15:32	1.2	16:32	2.4	15:31	NE
	21:26	0.5	22:39	1	20:48	SW
We 22	4:46	1.1	5:16	2.2	4:17	NE
	10:03	0.5	11:10	1.1	9:12	SW
	17:10	1.2	18:02	2.4	16:44	NE
	22:48	0.5	23:59	0.9	21:53	SW
Th 23	6:24	1.1	6:43	2.2	5:19	NE
	11:29	0.6	12:50	1	10:23	SW
	18:41	1.2	19:17	2.5	17:39	NE
Fr 24	0:00	0.5	1:05	0.8	6:10	NE
	7:42	1.2	7:57	2.4	11:24	SW
	12:47	0.5	14:04	0.9	18:23	NE
	19:48	1.3	20:14	2.6	23:43	SW

	PICTON		HAVELOCK		TE AUMITI (FRENCH PASS)	
November 2023						
DATE	TIME	HT	TIME	HT	TIME	DIR
Sa 25	1:00	0.4	2:00	0.7	6:53	NE
	8:41	1.3	8:56	2.6	12:16	SW
	13:51	0.4	14:57	0.7	19:00	NE
	20:40	1.4	21:02	2.8		
Su 26	1:52	0.3	2:49	0.6	0:33	SW
	9:29	1.4	9:46	2.7	7:34	NE
	14:42	0.3	15:40	0.6	13:02	SW
	21:24	1.5	21:46	2.9	19:37	NE
Mo 27	2:38	0.3	3:34	0.6	1:20	SW
	10:11	1.5	10:29	2.9	8:12	NE
	15:25	0.2	16:19	0.5	13:46	SW
	22:04	1.5	22:28	2.9	20:16	NE
Tu 28	3:22	0.3	4:16	0.5	2:05	SW
	10:48	1.5	11:09	2.9	8:53	NE
	16:04	0.2	16:55	0.4	14:27	SW
	22:41	1.5	23:09	2.9	20:57	NE
We 29	4:04	0.2	4:56	0.5	2:48	SW
	11:22	1.5	11:46	3	9:33	NE
	16:41	0.1	17:30	0.5	15:07	SW
	23:15	1.4	23:49	2.8	21:40	NE
Th 30	4:44	0.2	5:35	0.6	3:28	SW
	11:52	1.5	12:22	2.9	10:16	NE
	17:17	0.1	18:05	0.5	15:46	SW
	23:49	1.4			22:28	NE

December 2023						
Fr 1	5:24	0.2	0:29	2.7	4:08	SW
	12:20	1.5	6:12	0.6	10:58	NE
	17:53	0.2	12:56	2.8	16:26	SW
			18:41	0.6	23:20	NE
Sa 2	0:21	1.3	1:09	2.6	4:47	SW
	6:02	0.3	6:49	0.7	11:45	NE
	12:47	1.5	13:30	2.7	17:10	SW
	18:30	0.3	19:20	0.8		
Su 3	0:56	1.3	1:49	2.5	0:14	NE
	6:42	0.3	7:26	0.8	5:27	SW
	13:15	1.4	14:05	2.6	12:36	NE
	19:11	0.3	20:03	0.9	17:59	SW
Mo 4	1:35	1.2	2:31	2.4	1:13	NE
	7:22	0.4	8:06	0.9	6:09	SW
	13:46	1.3	14:43	2.4	13:32	NE
	19:56	0.4	20:52	1	18:56	SW
Tu 5	2:19	1.2	3:15	2.3	2:13	NE
	8:06	0.5	8:49	1	6:58	SW
	14:25	1.2	15:30	2.3	14:39	NE
	20:52	0.5	21:50	1	19:57	SW
We 6	3:12	1.1	4:06	2.2	3:16	NE
	8:57	0.5	9:41	1.1	7:57	SW
	15:21	1.2	16:39	2.2	15:49	NE
	22:00	0.5	22:55	1.1	20:57	SW
Th 7	4:18	1.1	5:07	2.2	4:15	NE
	10:03	0.6	10:47	1.2	9:06	SW
	16:51	1.1	18:06	2.2	16:51	NE
	23:09	0.5	23:57	1	21:51	SW



	PICTON		HAVELOCK		TE AUMITI (FRENCH PASS)	
December 2023						
DATE	TIME	HT	TIME	HT	TIME	DIR
Fr 8	5:38	1.1	6:21	2.2	5:11	NE
	11:23	0.6	12:07	1.2	10:14	SW
	18:22	1.1	19:14	2.3	17:38 22:42	NE SW
Sa 9	0:10	0.5	0:53	0.9	5:59	NE
	7:01	1.1	7:33	2.3	11:11	SW
	12:39	0.6	13:23	1.1	18:16	NE
	19:29	1.2	20:07	2.4	23:30	SW
Su 10	1:04	0.5	1:45	0.8	6:40	NE
	8:10	1.2	8:34	2.4	11:59	SW
	13:40	0.5	14:22	0.9	18:50	NE
	20:21	1.3	20:54	2.6		
Mo 11	1:53	0.4	2:35	0.7	0:16	SW
	9:04	1.3	9:26	2.6	7:18	NE
	14:28	0.4	15:09	0.7	12:41	SW
	21:08	1.3	21:39	2.7	19:25	NE
Tu 12	2:40	0.4	3:23	0.6	1:02	SW
	9:49	1.4	10:12	2.8	7:55	NE
	15:10	0.3	15:53	0.6	13:23	SW
	21:51	1.4	22:22	2.7	20:02	NE
We 13	3:24	0.3	4:10	0.5	1:48	SW
	10:30	1.5	10:55	2.9	8:34	NE
	15:49	0.2	16:34	0.5	14:05	SW
	22:34	1.4	23:05	2.8	20:44	NE
Th 14	4:07	0.3	4:55	0.5	2:35	SW
	11:08	1.5	11:35	3	9:16	NE
	16:27	0.2	17:15	0.4	14:47	SW
	23:17	1.4	23:48	2.8	21:33	NE
Fr 15	4:49	0.3	5:40	0.5	3:21	SW
	11:46	1.6	12:15	3.1	10:01	NE
	17:05	0.1	17:56	0.4	15:32 22:27	SW NE
Sa 16	0:00	1.4	0:32	2.8	4:08	SW
	5:31	0.3	6:24	0.5	10:51	NE
	12:24	1.6	12:55	3	16:21	SW
	17:46	0.1	18:39	0.5	23:27	NE
Su 17	0:45	1.4	1:16	2.7	4:55	SW
	6:14	0.3	7:07	0.5	11:46	NE
	13:03	1.6	13:36	3	17:13	SW
	18:29	0.2	19:25	0.6		
Mo 18	1:31	1.3	2:02	2.6	0:31	NE
	6:58	0.3	7:52	0.6	5:44	SW
	13:45	1.5	14:19	2.8	12:47	NE
	19:15	0.2	20:14	0.7	18:10	SW
Tu 19	2:19	1.3	2:49	2.5	1:36	NE
	7:44	0.3	8:39	0.7	6:36	SW
	14:31	1.4	15:08	2.7	13:54	NE
	20:06	0.3	21:09	0.8	19:10	SW
We 20	3:10	1.2	3:40	2.4	2:42	NE
	8:35	0.4	9:32	0.9	7:35	SW
	15:26	1.3	16:07	2.6	15:04	NE
	21:03	0.4	22:09	0.8	20:13	SW
Th 21	4:10	1.2	4:39	2.3	3:46	NE
	9:36	0.5	10:37	1	8:41	SW
	16:34	1.3	17:17	2.5	16:12	NE
	22:05	0.4	23:13	0.9	21:16	SW

	PICTON		HAVELOCK		TE AUMITI (FRENCH PASS)	
December 2023						
DATE	TIME	HT	TIME	HT	TIME	DIR
Fr 22	5:22	1.1	5:52	2.3	4:49	NE
	10:49	0.5	11:59	1	9:51	SW
	17:47	1.2	18:30	2.5	17:09	NE
	23:09	0.5			22:16	SW
Sa 23	6:47	1.1	0:15	0.9	5:45	NE
	12:08	0.5	7:14	2.3	10:57	SW
	18:57	1.2	13:21	1	17:57	NE
			19:34	2.5	23:15	SW
Su 24	0:11	0.5	1:16	0.9	6:36	NE
	8:06	1.2	8:26	2.4	11:54	SW
	13:19	0.5	14:25	0.9	18:39	NE
	19:59	1.3	20:30	2.6		
Mo 25	1:10	0.5	2:14	0.8	0:12	SW
	9:08	1.3	9:25	2.6	7:20	NE
	14:18	0.4	15:16	0.8	12:45	SW
	20:54	1.3	21:21	2.6	19:19	NE
Tu 26	2:06	0.4	3:08	0.8	1:06	SW
	9:57	1.4	10:13	2.7	8:00	NE
	15:07	0.3	16:01	0.7	13:30	SW
	21:43	1.3	22:09	2.7	20:00	NE
We 27	3:00	0.4	3:59	0.7	1:54	SW
	10:39	1.4	10:55	2.8	8:40	NE
	15:50	0.3	16:40	0.6	14:12	SW
	22:28	1.3	22:54	2.7	20:42	NE
Th 28	3:50	0.4	4:44	0.7	2:38	SW
	11:15	1.5	11:33	2.9	9:19	NE
	16:30	0.2	17:17	0.6	14:52	SW
	23:09	1.3	23:37	2.7	21:26	NE
Fr 29	4:35	0.3	5:25	0.7	3:17	SW
	11:48	1.5	12:09	2.9	9:58	NE
	17:07	0.2	17:53	0.6	15:31	SW
	23:46	1.3			22:13	NE
Sa 30	5:16	0.3	0:18	2.7	3:53	SW
	12:17	1.5	6:01	0.7	10:39	NE
	17:44	0.2	12:43	2.9	16:10	SW
			18:28	0.6	23:01	NE
Su 31	0:22	1.3	0:57	2.6	4:28	SW
	5:55	0.3	6:36	0.7	11:21	NE
	12:45	1.5	13:15	2.8	16:49	SW
	18:20	0.2	19:05	0.7	23:48	NE

January 2024						
Mo 1	0:56	1.3	1:34	2.6	5:02	SW
	6:31	0.3	7:11	0.7	12:06	NE
	13:12	1.4	13:47	2.7	17:30	SW
	18:57	0.3	19:43	0.7		
Tu 2	1:31	1.3	2:10	2.5	0:37	NE
	7:06	0.3	7:46	0.7	5:39	SW
	13:42	1.4	14:20	2.6	12:54	NE
	19:35	0.3	20:24	0.8	18:13	SW
We 3	2:06	1.3	2:45	2.5	1:26	NE
	7:42	0.4	8:24	0.8	6:17	SW
	14:15	1.3	14:56	2.5	13:46	NE
	20:16	0.4	21:08	0.9	18:59	SW



	PICTON		HAVELOCK		TE AUMITI (FRENCH PASS)	
January 2024						
DATE	TIME	HT	TIME	HT	TIME	DIR
Th 4	2:44	1.2	3:23	2.4	2:17	NE
	8:20	0.4	9:06	0.9	7:02	SW
	14:56	1.3	15:39	2.4	14:44	NE
	21:02	0.4	21:57	0.9	19:48	SW
Fr 5	3:26	1.2	4:06	2.3	3:11	NE
	9:05	0.5	9:57	1	7:56	SW
	15:48	1.2	16:36	2.3	15:45	NE
	21:53	0.5	22:51	0.9	20:42	SW
Sa 6	4:17	1.1	5:00	2.3	4:10	NE
	10:04	0.6	11:02	1.1	9:04	SW
	16:55	1.1	17:52	2.3	16:43	NE
	22:52	0.5	23:49	0.9	21:39	SW
Su 7	5:26	1.1	6:20	2.2	5:10	NE
	11:26	0.6	12:20	1.1	10:17	SW
	18:11	1.1	19:09	2.3	17:34	NE
	23:55	0.5			22:40	SW
Mo 8	6:59	1.1	0:51	0.9	6:07	NE
	12:50	0.6	7:49	2.3	11:21	SW
	19:25	1.1	13:36	1	18:19	NE
			20:14	2.4	23:41	SW
Tu 9	1:01	0.5	1:55	0.9	6:55	NE
	8:29	1.2	8:58	2.5	12:15	SW
	13:56	0.5	14:38	0.9	19:02	NE
	20:34	1.2	21:12	2.5		
We 10	2:05	0.5	2:58	0.8	0:40	SW
	9:32	1.3	9:53	2.7	7:38	NE
	14:49	0.4	15:31	0.7	13:03	SW
	21:36	1.2	22:05	2.6	19:46	NE
Th 11	3:05	0.4	3:56	0.7	1:35	SW
	10:20	1.4	10:40	2.9	8:19	NE
	15:35	0.3	16:19	0.6	13:51	SW
	22:32	1.3	22:55	2.7	20:33	NE
Fr 12	3:59	0.4	4:49	0.6	2:25	SW
	11:03	1.5	11:24	3	9:02	NE
	16:18	0.2	17:04	0.5	14:38	SW
	23:22	1.4	23:42	2.8	21:25	NE
Sa 13	4:46	0.3	5:36	0.5	3:12	SW
	11:42	1.6	12:04	3.1	9:48	NE
	16:59	0.1	17:48	0.4	15:24	SW
					22:19	NE
Su 14	0:08	1.4	0:27	2.8	3:58	SW
	5:29	0.2	6:20	0.4	10:38	NE
	12:21	1.6	12:44	3.1	16:13	SW
	17:40	0.1	18:31	0.4	23:15	NE
Mo 15	0:50	1.4	1:10	2.8	4:43	SW
	6:09	0.2	7:01	0.4	11:31	NE
	13:00	1.6	13:24	3.1	17:01	SW
	18:21	0.1	19:15	0.4		
Tu 16	1:30	1.4	1:52	2.8	0:12	NE
	6:49	0.2	7:41	0.5	5:28	SW
	13:39	1.6	14:05	3	12:28	NE
	19:04	0.1	20:00	0.5	17:51	SW
We 17	2:08	1.4	2:33	2.7	1:10	NE
	7:30	0.2	8:23	0.6	6:14	SW
	14:19	1.5	14:48	2.9	13:28	NE
	19:47	0.2	20:46	0.6	18:42	SW

	PICTON		HAVELOCK		TE AUMITI (FRENCH PASS)	
January 2024						
DATE	TIME	HT	TIME	HT	TIME	DIR
Th 18	2:46	1.3	3:15	2.6	2:09	NE
	8:13	0.3	9:08	0.7	7:06	SW
	15:03	1.4	15:36	2.7	14:32	NE
	20:34	0.3	21:34	0.7	19:36	SW
Fr 19	3:23	1.3	4:01	2.5	3:08	NE
	9:01	0.4	10:00	0.9	8:06	SW
	15:52	1.3	16:33	2.5	15:35	NE
	21:23	0.4	22:26	0.8	20:33	SW
Sa 20	4:06	1.2	4:58	2.3	4:12	NE
	10:03	0.5	11:07	1	9:19	SW
	16:50	1.2	17:40	2.4	16:36	NE
	22:18	0.4	23:23	0.9	21:38	SW
Su 21	5:11	1.1	6:22	2.2	5:19	NE
	11:23	0.5	12:34	1.1	10:33	SW
	17:58	1.2	18:52	2.3	17:31	NE
	23:20	0.5			22:49	SW
Mo 22	7:21	1.1	0:27	1	6:21	NE
	12:48	0.5	7:57	2.2	11:38	SW
	19:13	1.1	13:56	1	18:21	NE
			20:00	2.3	23:59	SW
Tu 23	0:28	0.6	1:39	1	7:11	NE
	8:57	1.2	9:09	2.4	12:31	SW
	13:59	0.5	14:58	0.9	19:07	NE
	20:30	1.1	21:01	2.4		
We 24	1:38	0.6	2:54	1	0:59	SW
	9:53	1.3	10:02	2.6	7:53	NE
	14:55	0.4	15:49	0.8	13:19	SW
	21:37	1.2	21:55	2.5	19:51	NE
Th 25	2:47	0.5	4:00	0.9	1:48	SW
	10:35	1.4	10:44	2.7	8:29	NE
	15:41	0.3	16:31	0.7	14:00	SW
	22:29	1.3	22:44	2.6	20:34	NE
Fr 26	3:46	0.4	4:47	0.8	2:28	SW
	11:10	1.5	11:20	2.8	9:05	NE
	16:21	0.3	17:07	0.6	14:38	SW
	23:12	1.3	23:27	2.6	21:16	NE
Sa 27	4:33	0.4	5:22	0.7	3:04	SW
	11:41	1.5	11:54	2.9	9:42	NE
	16:58	0.2	17:40	0.6	15:14	SW
	23:47	1.4			21:56	NE
Su 28	5:10	0.3	0:05	2.7	3:36	SW
	12:09	1.5	5:52	0.6	10:17	NE
	17:32	0.2	12:25	2.9	15:49	SW
			18:12	0.6	22:37	NE
Mo 29	0:18	1.4	0:41	2.7	4:06	SW
	5:43	0.3	6:21	0.6	10:55	NE
	12:34	1.5	12:55	2.9	16:23	SW
	18:04	0.2	18:44	0.6	23:18	NE
Tu 30	0:47	1.4	1:13	2.7	4:36	SW
	6:14	0.2	6:52	0.6	11:34	NE
	12:59	1.5	13:24	2.8	16:58	SW
	18:36	0.2	19:18	0.6	23:58	NE
We 31	1:15	1.4	1:45	2.7	5:06	SW
	6:43	0.2	7:23	0.6	12:14	NE
	13:25	1.5	13:53	2.8	17:34	SW
	19:08	0.2	19:53	0.6		



	PICTON		HAVELOCK		TE AUMITI (FRENCH PASS)	
February 2024						
DATE	TIME	HT	TIME	HT	TIME	DIR
Th 1	1:44	1.4	2:15	2.7	0:39	NE
	7:13	0.3	7:57	0.6	5:39	SW
	13:53	1.4	14:23	2.7	12:58	NE
	19:41	0.3	20:31	0.7	18:12	SW
Fr 2	2:13	1.4	2:46	2.6	1:23	NE
	7:44	0.3	8:34	0.7	6:16	SW
	14:24	1.4	14:57	2.6	13:46	NE
	20:16	0.3	21:12	0.7	18:54	SW
Sa 3	2:44	1.3	3:21	2.5	2:10	NE
	8:18	0.4	9:17	0.8	7:01	SW
	15:02	1.3	15:39	2.4	14:43	NE
	20:56	0.4	21:59	0.8	19:42	SW
Su 4	3:19	1.2	4:03	2.4	3:05	NE
	9:01	0.5	10:12	1	8:03	SW
	15:50	1.2	16:35	2.3	15:47	NE
	21:43	0.5	22:54	0.9	20:40	SW
Mo 5	4:02	1.1	5:05	2.2	4:15	NE
	10:08	0.6	11:27	1.1	9:26	SW
	16:58	1.1	18:02	2.2	16:53	NE
	22:48	0.6			21:52	SW
Tu 6	5:25	1.1	0:01	1	5:34	NE
	11:57	0.6	7:01	2.2	10:49	SW
	18:32	1	12:54	1.1	17:52	NE
			19:37	2.2	23:13	SW
We 7	0:11	0.6	1:20	1	6:36	NE
	7:57	1.1	8:34	2.4	11:54	SW
	13:27	0.6	14:12	1	18:46	NE
	20:16	1.1	20:52	2.3		
Th 8	1:38	0.6	2:42	0.9	0:23	SW
	9:22	1.2	9:36	2.6	7:22	NE
	14:32	0.4	15:14	0.8	12:47	SW
	21:40	1.2	21:54	2.5	19:35	NE
Fr 9	2:55	0.5	3:51	0.8	1:21	SW
	10:12	1.4	10:25	2.9	8:04	NE
	15:23	0.3	16:06	0.6	13:37	SW
	22:37	1.3	22:46	2.7	20:24	NE
Sa 10	3:54	0.4	4:45	0.6	2:11	SW
	10:54	1.5	11:08	3.1	8:47	NE
	16:07	0.2	16:52	0.5	14:24	SW
	23:22	1.4	23:33	2.8	21:13	NE
Su 11	4:39	0.3	5:30	0.4	2:56	SW
	11:32	1.7	11:48	3.2	9:31	NE
	16:47	0.1	17:35	0.4	15:10	SW
					22:03	NE
Mo 12	0:02	1.5	0:15	2.9	3:40	SW
	5:18	0.2	6:09	0.3	10:18	NE
	12:09	1.7	12:27	3.2	15:56	SW
	17:26	0.1	18:17	0.3	22:53	NE
Tu 13	0:39	1.5	0:55	3	4:23	SW
	5:55	0.1	6:46	0.3	11:09	NE
	12:45	1.7	13:05	3.2	16:42	SW
	18:05	0.1	18:57	0.3	23:46	NE
We 14	1:13	1.5	1:33	3	5:05	SW
	6:31	0.1	7:23	0.3	12:02	NE
	13:21	1.7	13:44	3.1	17:27	SW
	18:43	0.1	19:37	0.4		

	PICTON		HAVELOCK		TE AUMITI (FRENCH PASS)	
February 2024						
DATE	TIME	HT	TIME	HT	TIME	DIR
Th 15	1:44	1.5	2:10	2.9	0:38	NE
	7:07	0.1	8:00	0.4	5:48	SW
	13:56	1.6	14:23	3	12:58	NE
	19:22	0.1	20:17	0.5	18:12	SW
Fr 16	2:13	1.4	2:47	2.7	1:32	NE
	7:45	0.2	8:40	0.6	6:35	SW
	14:32	1.5	15:05	2.7	13:57	NE
	20:02	0.2	20:59	0.7	19:00	SW
Sa 17	2:40	1.3	3:25	2.5	2:28	NE
	8:26	0.3	9:25	0.8	7:33	SW
	15:11	1.3	15:54	2.5	15:00	NE
	20:44	0.3	21:44	0.8	19:53	SW
Su 18	3:05	1.2	4:11	2.3	3:32	NE
	9:18	0.5	10:23	1	8:50	SW
	15:56	1.2	16:54	2.3	16:04	NE
	21:32	0.4	22:36	1	21:00	SW
Mo 19	3:31	1.1	5:28	2.1	4:52	NE
	10:39	0.6	11:50	1.2	10:14	SW
	16:57	1.1	18:12	2.2	17:09	NE
	22:33	0.6	23:41	1.2	22:26	SW
Tu 20	4:14	1	7:32	2.1	6:11	NE
	12:20	0.6	13:33	1.2	11:23	SW
	18:27	1	19:34	2.2	18:08	NE
	23:51	0.6			23:49	SW
We 21	8:53	1.1	1:10	1.2	7:03	NE
	13:42	0.6	8:55	2.3	12:18	SW
	20:25	1	14:44	1	19:00	NE
			20:46	2.2		
Th 22	1:20	0.6	3:07	1.1	0:50	SW
	9:45	1.2	9:47	2.5	7:41	NE
	14:43	0.5	15:36	0.9	13:02	SW
	21:40	1.1	21:44	2.4	19:43	NE
Fr 23	2:43	0.6	4:10	1	1:34	SW
	10:23	1.4	10:26	2.7	8:14	NE
	15:29	0.4	16:16	0.8	13:42	SW
	22:27	1.3	22:31	2.5	20:22	NE
Sa 24	3:44	0.5	4:44	0.8	2:10	SW
	10:55	1.5	11:00	2.8	8:46	NE
	16:07	0.3	16:50	0.7	14:17	SW
	23:03	1.3	23:11	2.7	20:57	NE
Su 25	4:23	0.4	5:10	0.7	2:41	SW
	11:23	1.5	11:31	2.9	9:17	NE
	16:41	0.2	17:19	0.6	14:50	SW
	23:33	1.4	23:46	2.8	21:33	NE
Mo 26	4:55	0.3	5:34	0.6	3:10	SW
	11:49	1.6	12:01	3	9:49	NE
	17:12	0.2	17:48	0.5	15:22	SW
				22:07	NE	
Tu 27	0:00	1.5	0:18	2.8	3:37	SW
	5:22	0.2	6:00	0.5	10:23	NE
	12:12	1.6	12:29	3	15:54	SW
	17:41	0.2	18:18	0.5	22:44	NE
We 28	0:26	1.5	0:48	2.9	4:05	SW
	5:49	0.2	6:28	0.4	10:58	NE
	12:35	1.6	12:57	2.9	16:26	SW
	18:09	0.2	18:49	0.5	23:20	NE



PICTON

HAVELOCK

TE AUMITI
(FRENCH PASS)

February 2024

DATE	TIME	HT	TIME	HT	TIME	DIR
Th 29	0:51	1.5	1:17	2.9	4:33	SW
	6:15	0.2	6:58	0.4	11:35	NE
	12:59	1.5	13:25	2.9	17:00	SW
	18:38	0.2	19:22	0.5	23:58	NE

March 2024

Fr 1	1:17	1.5	1:46	2.8	5:04	SW
	6:42	0.2	7:30	0.5	12:16	NE
	13:25	1.5	13:53	2.8	17:35	SW
	19:07	0.2	19:57	0.6		
Sa 2	1:43	1.5	2:15	2.7	0:38	NE
	7:11	0.2	8:05	0.6	5:40	SW
	13:53	1.4	14:25	2.6	13:01	NE
	19:39	0.3	20:35	0.7	18:14	SW
Su 3	2:10	1.4	2:48	2.6	1:22	NE
	7:44	0.3	8:46	0.7	6:22	SW
	14:24	1.3	15:03	2.5	13:57	NE
	20:15	0.3	21:19	0.8	19:01	SW
Mo 4	2:39	1.3	3:27	2.5	2:17	NE
	8:23	0.4	9:37	0.9	7:22	SW
	15:03	1.2	15:53	2.3	15:05	NE
	20:58	0.5	22:12	1	20:01	SW
Tu 5	3:13	1.2	4:22	2.3	3:31	NE
	9:20	0.5	10:50	1.1	8:52	SW
	16:01	1.1	17:11	2.1	16:23	NE
	22:00	0.6	23:22	1.1	21:21	SW
We 6	4:08	1.1	6:24	2.2	5:05	NE
	11:14	0.6	12:23	1.1	10:26	SW
	17:55	1	19:08	2.1	17:34	NE
	23:38	0.7			22:51	SW
Th 7	7:33	1.1	0:55	1.1	6:17	NE
	13:01	0.6	8:12	2.3	11:34	SW
	20:20	1	13:50	1	18:33	NE
			20:35	2.3		
Fr 8	1:20	0.6	2:33	1	0:04	SW
	9:05	1.2	9:16	2.6	7:05	NE
	14:11	0.5	14:56	0.8	12:28	SW
	21:36	1.2	21:39	2.5	19:23	NE
Sa 9	2:41	0.5	3:43	0.7	1:01	SW
	9:54	1.4	10:04	2.9	7:46	NE
	15:03	0.3	15:48	0.6	13:17	SW
	22:25	1.3	22:31	2.7	20:08	NE
Su 10	3:37	0.4	4:32	0.5	1:49	SW
	10:34	1.6	10:46	3.1	8:25	NE
	15:46	0.2	16:33	0.4	14:04	SW
	23:05	1.5	23:15	2.9	20:53	NE
Mo 11	4:20	0.2	5:12	0.3	2:35	SW
	11:12	1.7	11:26	3.2	9:07	NE
	16:26	0.1	17:14	0.3	14:49	SW
	23:42	1.5	23:55	3	21:39	NE
Tu 12	4:57	0.1	5:49	0.2	3:17	SW
	11:47	1.7	12:04	3.3	9:53	NE
	17:04	0.1	17:53	0.3	15:34	SW
					22:27	NE

	PICTON		HAVELOCK		TE AUMITI (FRENCH PASS)	
March 2024						
DATE	TIME	HT	TIME	HT	TIME	DIR
We 13	0:16	1.6	0:33	3.1	3:58	SW
	5:32	0.1	6:24	0.2	10:40	NE
	12:22	1.7	12:41	3.2	16:17	SW
	17:41	0.1	18:32	0.3	23:15	NE
Th 14	0:47	1.6	1:09	3.1	4:40	SW
	6:06	0.1	6:59	0.3	11:32	NE
	12:55	1.7	13:19	3.1	17:01	SW
	18:17	0.1	19:09	0.4		
Fr 15	1:16	1.6	1:45	2.9	0:04	NE
	6:41	0.1	7:34	0.4	5:22	SW
	13:27	1.6	13:57	2.9	12:26	NE
	18:54	0.2	19:47	0.5	17:44	SW
Sa 16	1:41	1.5	2:19	2.8	0:57	NE
	7:17	0.2	8:12	0.6	6:08	SW
	14:00	1.4	14:37	2.7	13:25	NE
	19:31	0.2	20:27	0.7	18:29	SW
Su 17	2:04	1.4	2:55	2.6	1:51	NE
	7:55	0.3	8:55	0.8	7:05	SW
	14:33	1.3	15:23	2.5	14:27	NE
	20:11	0.3	21:09	0.9	19:21	SW
Mo 18	2:25	1.3	3:37	2.3	2:56	NE
	8:43	0.5	9:50	1	8:25	SW
	15:12	1.2	16:20	2.3	15:36	NE
	20:57	0.5	21:58	1.1	20:28	SW
Tu 19	2:48	1.2	4:46	2.1	4:25	NE
	10:02	0.6	11:17	1.2	9:53	SW
	16:08	1	17:39	2.1	16:49	NE
	21:58	0.6	23:03	1.2	22:02	SW
We 20	3:19	1	7:07	2.1	5:55	NE
	11:53	0.6	13:12	1.2	11:01	SW
	17:52	1	19:09	2.1	17:54	NE
	23:27	0.7			23:28	SW
Th 21	8:32	1.1	0:49	1.3	6:45	NE
	13:17	0.6	8:31	2.2	11:53	SW
	20:18	1	14:21	1.1	18:45	NE
			20:25	2.2		
Fr 22	1:03	0.7	3:01	1.2	0:25	SW
	9:21	1.2	9:21	2.4	7:20	NE
	14:18	0.5	15:09	0.9	12:36	SW
	21:23	1.1	21:23	2.4	19:24	NE
Sa 23	2:27	0.6	3:48	1	1:07	SW
	9:56	1.3	9:58	2.6	7:49	NE
	15:03	0.4	15:46	0.8	13:14	SW
	22:04	1.3	22:07	2.5	19:59	NE
Su 24	3:22	0.4	4:17	0.8	1:40	SW
	10:26	1.4	10:31	2.8	8:17	NE
	15:41	0.3	16:18	0.7	13:48	SW
	22:37	1.4	22:45	2.7	20:30	NE
Mo 25	3:58	0.3	4:41	0.7	2:10	SW
	10:53	1.5	11:01	2.9	8:46	NE
	16:13	0.2	16:47	0.6	14:20	SW
	23:06	1.5	23:19	2.8	21:03	NE
Tu 26	4:27	0.3	5:05	0.5	2:38	SW
	11:17	1.5	11:31	3	9:17	NE
	16:43	0.2	17:16	0.5	14:52	SW
	23:32	1.5	23:50	2.9	21:36	NE



	PICTON		HAVELOCK		TE AUMITI (FRENCH PASS)	
March 2024						
DATE	TIME	HT	TIME	HT	TIME	DIR
We 27	4:54	0.2	5:32	0.4	3:06	SW
	11:41	1.6	12:00	3	9:48	NE
	17:11	0.2	17:47	0.4	15:24	SW
	23:58	1.6			22:10	NE
Th 28	5:20	0.2	0:21	2.9	3:34	SW
	12:05	1.5	6:01	0.4	10:23	NE
	17:39	0.2	12:29	2.9	15:56	SW
			18:19	0.4	22:46	NE
Fr 29	0:24	1.6	0:51	2.9	4:04	SW
	5:46	0.1	6:32	0.4	10:59	NE
	12:31	1.5	12:58	2.9	16:31	SW
	18:07	0.2	18:53	0.5	23:24	NE
Sa 30	0:50	1.5	1:20	2.9	4:37	SW
	6:14	0.1	7:05	0.4	11:41	NE
	12:57	1.5	13:29	2.7	17:08	SW
	18:38	0.2	19:29	0.5		
Su 31	1:17	1.5	1:51	2.8	0:04	NE
	6:45	0.2	7:41	0.6	5:13	SW
	13:26	1.4	14:02	2.6	12:31	NE
	19:11	0.3	20:08	0.7	17:50	SW

April 2024						
Mo 1	1:45	1.4	2:26	2.7	0:52	NE
	7:20	0.3	8:23	0.7	6:00	SW
	13:57	1.3	14:43	2.4	13:32	NE
	19:48	0.4	20:52	0.8	18:39	SW
Tu 2	2:16	1.3	3:07	2.5	1:51	NE
	8:02	0.4	9:17	0.9	7:05	SW
	14:37	1.2	15:35	2.3	14:46	NE
	20:35	0.5	21:47	1	19:42	SW
We 3	2:52	1.2	4:07	2.3	3:11	NE
	9:04	0.5	10:30	1.1	8:37	SW
	15:37	1.1	16:54	2.1	16:09	NE
	21:43	0.6	23:00	1.1	21:04	SW
Th 4	3:57	1.1	6:03	2.2	4:46	NE
	10:51	0.6	12:02	1.1	10:04	SW
	17:54	1	18:47	2.1	17:21	NE
	23:23	0.6			22:30	SW
Fr 5	7:03	1.1	0:40	1.1	5:55	NE
	12:30	0.6	7:44	2.4	11:09	SW
	20:06	1.1	13:26	1	18:18	NE
			20:13	2.3	23:40	SW
Sa 6	1:00	0.6	2:17	1	6:42	NE
	8:31	1.2	8:47	2.6	12:02	SW
	13:38	0.4	14:29	0.8	19:04	NE
	21:12	1.2	21:16	2.5		
Su 7	2:14	0.5	2:20	0.7	0:35	SW
	8:22	1.4	8:35	2.9	6:22	NE
	13:31	0.3	14:19	0.6	11:51	SW
	20:59	1.4	21:07	2.7	18:47	NE
Mo 8	2:08	0.3	3:07	0.5	0:24	SW
	9:04	1.5	9:18	3	7:01	NE
	14:15	0.2	15:04	0.4	12:38	SW
	21:39	1.5	21:51	2.9	19:29	NE

	PICTON		HAVELOCK		TE AUMITI (FRENCH PASS)	
April 2024						
DATE	TIME	HT	TIME	HT	TIME	DIR
Tu 9	2:51	0.2	3:46	0.3	1:08	SW
	9:43	1.6	9:58	3.2	7:41	NE
	14:56	0.2	15:45	0.3	13:24	SW
	22:15	1.6	22:31	3	20:14	NE
We 10	3:29	0.1	4:23	0.2	1:51	SW
	10:19	1.7	10:37	3.2	8:24	NE
	15:35	0.1	16:25	0.3	14:09	SW
	22:49	1.6	23:09	3.1	20:58	NE
Th 11	4:05	0.1	4:58	0.2	2:32	SW
	10:53	1.6	11:15	3.1	9:11	NE
	16:12	0.1	17:04	0.3	14:53	SW
	23:20	1.6	23:45	3	21:45	NE
Fr 12	4:41	0.1	5:33	0.3	3:14	SW
	11:26	1.6	11:54	3	10:02	NE
	16:50	0.1	17:42	0.4	15:37	SW
	23:48	1.6			22:34	NE
Sa 13	5:16	0.1	0:21	2.9	3:57	SW
	11:58	1.5	6:09	0.5	10:57	NE
	17:27	0.2	12:33	2.8	16:20	SW
			18:20	0.6	23:24	NE
Su 14	0:14	1.5	0:56	2.8	4:44	SW
	5:52	0.2	6:48	0.6	11:57	NE
	12:30	1.4	13:14	2.6	17:05	SW
	18:05	0.3	18:59	0.7		
Mo 15	0:38	1.4	1:33	2.6	0:20	NE
	6:32	0.3	7:32	0.9	5:43	SW
	13:03	1.3	14:01	2.4	13:02	NE
	18:47	0.4	19:41	0.9	17:56	SW
Tu 16	1:02	1.3	2:16	2.3	1:26	NE
	7:21	0.5	8:28	1.1	7:01	SW
	13:44	1.1	14:57	2.2	14:13	NE
	19:35	0.5	20:30	1.1	19:01	SW
We 17	1:31	1.2	3:24	2.1	2:51	NE
	8:37	0.6	9:53	1.2	8:21	SW
	14:43	1	16:11	2.1	15:24	NE
	20:39	0.6	21:34	1.3	20:24	SW
Th 18	2:15	1.1	5:26	2.1	4:18	NE
	10:18	0.6	11:37	1.2	9:25	SW
	16:27	1	17:35	2.1	16:26	NE
	22:06	0.7	23:14	1.3	21:44	SW
Fr 19	6:31	1	6:49	2.2	5:10	NE
	11:36	0.6	12:40	1.1	10:16	SW
	18:32	1	18:49	2.2	17:16	NE
	23:35	0.6			22:41	SW
Sa 20	7:32	1.2	1:11	1.2	5:46	NE
	12:35	0.5	7:39	2.4	10:57	SW
	19:40	1.2	13:24	0.9	17:54	NE
			19:46	2.3	23:25	SW
Su 21	0:49	0.6	2:00	1	6:15	NE
	8:11	1.3	8:18	2.6	11:35	SW
	13:21	0.4	14:01	0.8	18:28	NE
	20:24	1.3	20:32	2.5		
Mo 22	1:42	0.4	2:33	0.8	0:01	SW
	8:43	1.4	8:53	2.7	6:43	NE
	14:00	0.3	14:35	0.7	12:12	SW
	20:59	1.4	21:11	2.7	19:00	NE



	PICTON		HAVELOCK		TE AUMITI (FRENCH PASS)	
April 2024						
DATE	TIME	HT	TIME	HT	TIME	DIR
Tu 23	2:21	0.3	3:02	0.7	0:33	SW
	9:11	1.4	9:26	2.8	7:11	NE
	14:35	0.3	15:08	0.6	12:46	SW
	21:31	1.5	21:47	2.8	19:31	NE
We 24	2:52	0.3	3:31	0.5	1:04	SW
	9:39	1.5	9:58	2.9	7:42	NE
	15:07	0.2	15:42	0.5	13:20	SW
	22:01	1.5	22:22	2.9	20:05	NE
Th 25	3:22	0.2	4:02	0.4	1:35	SW
	10:06	1.5	10:30	2.9	8:15	NE
	15:38	0.2	16:17	0.5	13:55	SW
	22:30	1.5	22:55	3	20:40	NE
Fr 26	3:50	0.2	4:34	0.4	2:06	SW
	10:34	1.5	11:03	2.9	8:52	NE
	16:09	0.2	16:53	0.5	14:31	SW
	22:59	1.6	23:28	3	21:18	NE
Sa 27	4:20	0.1	5:08	0.4	2:40	SW
	11:04	1.4	11:36	2.8	9:33	NE
	16:41	0.2	17:30	0.5	15:10	SW
	23:28	1.5			21:58	NE
Su 28	4:52	0.2	0:01	2.9	3:17	SW
	11:35	1.4	5:45	0.5	10:20	NE
	17:15	0.3	12:12	2.7	15:52	SW
	23:59	1.5	18:09	0.6	22:45	NE
Mo 29	5:27	0.2	0:36	2.8	4:00	SW
	12:09	1.3	6:24	0.6	11:17	NE
	17:53	0.3	12:51	2.6	16:38	SW
			18:51	0.7	23:38	NE
Tu 30	0:31	1.4	1:15	2.7	4:54	SW
	6:07	0.3	7:10	0.7	12:25	NE
	12:47	1.2	13:37	2.4	17:31	SW
	18:36	0.4	19:38	0.8		

May 2024						
We 1	1:08	1.3	2:01	2.5	0:43	NE
	6:56	0.4	8:07	0.9	6:03	SW
	13:36	1.1	14:34	2.3	13:41	NE
	19:29	0.5	20:35	1	18:35	SW
Th 2	1:57	1.2	3:06	2.4	2:03	NE
	8:03	0.5	9:18	1	7:23	SW
	14:52	1.1	15:49	2.2	14:56	NE
	20:40	0.6	21:47	1.1	19:49	SW
Fr 3	3:22	1.2	4:42	2.3	3:26	NE
	9:32	0.5	10:40	1	8:37	SW
	16:50	1	17:21	2.2	16:03	NE
	22:08	0.6	23:21	1.1	21:05	SW
Sa 4	5:24	1.2	6:09	2.4	4:30	NE
	10:53	0.5	11:54	0.9	9:38	SW
	18:28	1.1	18:42	2.3	16:57	NE
	23:32	0.5			22:11	SW
Su 5	6:45	1.3	0:47	0.9	5:17	NE
	11:57	0.4	7:11	2.6	10:32	SW
	19:35	1.2	12:54	0.7	17:43	NE
			19:45	2.5	23:06	SW

	PICTON		HAVELOCK		TE AUMITI (FRENCH PASS)	
May 2024						
DATE	TIME	HT	TIME	HT	TIME	DIR
Mo 6	0:41	0.4	1:48	0.7	5:56	NE
	7:41	1.4	8:02	2.8	11:22	SW
	12:50	0.3	13:44	0.6	18:25	NE
	20:26	1.4	20:38	2.7	23:55	SW
Tu 7	1:35	0.3	2:36	0.6	6:34	NE
	8:28	1.5	8:47	2.9	12:11	SW
	13:38	0.3	14:31	0.5	19:07	NE
	21:09	1.5	21:24	2.9		
We 8	2:21	0.2	3:17	0.4	0:41	SW
	9:09	1.5	9:29	3	7:14	NE
	14:22	0.2	15:15	0.5	12:59	SW
	21:48	1.5	22:06	3	19:49	NE
Th 9	3:02	0.1	3:56	0.4	1:25	SW
	9:47	1.5	10:10	3	7:57	NE
	15:04	0.2	15:57	0.4	13:46	SW
	22:24	1.6	22:46	3	20:34	NE
Fr 10	3:40	0.1	4:33	0.4	2:09	SW
	10:24	1.5	10:51	3	8:45	NE
	15:44	0.2	16:37	0.5	14:31	SW
	22:56	1.6	23:24	3	21:20	NE
Sa 11	4:18	0.1	5:10	0.4	2:52	SW
	10:59	1.5	11:32	2.8	9:35	NE
	16:25	0.2	17:18	0.6	15:16	SW
	23:27	1.5			22:08	NE
Su 12	4:55	0.2	0:01	2.9	3:37	SW
	11:33	1.4	5:48	0.6	10:31	NE
	17:05	0.3	12:14	2.7	15:59	SW
	23:55	1.5	17:57	0.7	22:58	NE
Mo 13	5:34	0.2	0:39	2.7	4:25	SW
	12:08	1.3	6:28	0.7	11:32	NE
	17:47	0.3	12:58	2.5	16:44	SW
			18:38	0.8	23:54	NE
Tu 14	0:23	1.4	1:17	2.6	5:21	SW
	6:16	0.3	7:14	0.9	12:36	NE
	12:47	1.2	13:45	2.4	17:32	SW
	18:31	0.4	19:20	0.9		
We 15	0:53	1.3	2:01	2.4	0:57	NE
	7:07	0.4	8:10	1	6:27	SW
	13:32	1.2	14:37	2.3	13:42	NE
	19:20	0.5	20:08	1.1	18:28	SW
Th 16	1:31	1.2	3:01	2.2	2:10	NE
	8:13	0.5	9:21	1.1	7:34	SW
	14:31	1.1	15:38	2.2	14:45	NE
	20:20	0.6	21:06	1.2	19:34	SW
Fr 17	2:32	1.1	4:29	2.2	3:25	NE
	9:32	0.5	10:39	1.1	8:33	SW
	15:48	1.1	16:46	2.1	15:44	NE
	21:34	0.6	22:22	1.2	20:45	SW
Sa 18	4:37	1.1	5:49	2.2	4:22	NE
	10:42	0.5	11:39	1	9:24	SW
	17:16	1.1	17:56	2.2	16:35	NE
	22:51	0.6	23:51	1.2	21:47	SW
Su 19	6:09	1.1	6:46	2.3	5:03	NE
	11:39	0.5	12:26	0.9	10:09	SW
	18:32	1.1	18:57	2.3	17:17	NE
					22:37	SW



	PICTON		HAVELOCK		TE AUMITI (FRENCH PASS)	
May 2024						
DATE	TIME	HT	TIME	HT	TIME	DIR
Mo 20	0:01	0.5	0:56	1	5:36	NE
	7:03	1.2	7:31	2.5	10:50	SW
	12:28	0.4	13:09	0.8	17:54	NE
	19:30	1.2	19:49	2.5	23:18	SW
Tu 21	0:56	0.5	1:42	0.9	6:07	NE
	7:45	1.3	8:11	2.6	11:30	SW
	13:11	0.4	13:49	0.7	18:29	NE
	20:15	1.3	20:35	2.6	23:55	SW
We 22	1:40	0.4	2:21	0.7	6:37	NE
	8:22	1.3	8:49	2.7	12:11	SW
	13:51	0.3	14:30	0.6	19:02	NE
	20:54	1.4	21:16	2.8		
Th 23	2:17	0.3	2:58	0.6	0:31	SW
	8:58	1.4	9:27	2.8	7:10	NE
	14:30	0.3	15:10	0.6	12:50	SW
	21:31	1.5	21:55	2.9	19:38	NE
Fr 24	2:52	0.2	3:34	0.5	1:07	SW
	9:33	1.4	10:04	2.8	7:46	NE
	15:07	0.3	15:51	0.5	13:31	SW
	22:05	1.5	22:33	2.9	20:16	NE
Sa 25	3:26	0.2	4:11	0.5	1:44	SW
	10:09	1.4	10:43	2.8	8:27	NE
	15:44	0.3	16:32	0.5	14:14	SW
	22:40	1.5	23:10	2.9	20:56	NE
Su 26	4:00	0.2	4:50	0.5	2:23	SW
	10:46	1.4	11:23	2.7	9:16	NE
	16:22	0.3	17:14	0.6	14:57	SW
	23:14	1.5	23:48	2.9	21:41	NE
Mo 27	4:37	0.2	5:30	0.5	3:07	SW
	11:25	1.3	12:04	2.6	10:10	NE
	17:03	0.3	17:57	0.6	15:43	SW
	23:50	1.5			22:32	NE
Tu 28	5:17	0.2	0:27	2.8	3:56	SW
	12:08	1.3	6:14	0.6	11:13	NE
	17:46	0.3	12:49	2.6	16:32	SW
			18:42	0.7	23:29	NE
We 29	0:29	1.5	1:09	2.7	4:52	SW
	6:02	0.2	7:03	0.7	12:20	NE
	12:56	1.2	13:38	2.5	17:24	SW
	18:33	0.4	19:30	0.8		
Th 30	1:13	1.4	1:58	2.6	0:36	NE
	6:54	0.3	7:59	0.8	5:55	SW
	13:52	1.2	14:32	2.4	13:28	NE
	19:26	0.4	20:25	0.9	18:22	SW
Fr 31	2:08	1.3	2:58	2.5	1:49	NE
	7:55	0.4	9:03	0.9	7:02	SW
	14:59	1.1	15:34	2.3	14:36	NE
	20:29	0.5	21:31	1	19:27	SW
June 2024						
Sa 1	3:22	1.3	4:14	2.4	3:00	NE
	9:04	0.4	10:11	0.9	8:05	SW
	16:16	1.1	16:46	2.3	15:38	NE
	21:42	0.5	22:50	1	20:36	SW

	PICTON		HAVELOCK		TE AUMITI (FRENCH PASS)	
June 2024						
DATE	TIME	HT	TIME	HT	TIME	DIR
Su 2	4:43	1.2	5:29	2.5	4:00	NE
	10:12	0.4	11:15	0.8	9:04	SW
	17:37	1.1	18:02	2.4	16:33	NE
	22:58	0.5			21:41	SW
Mo 3	5:55	1.3	0:10	0.9	4:49	NE
	11:13	0.4	6:32	2.6	10:00	SW
	18:50	1.2	12:14	0.8	17:21	NE
			19:11	2.5	22:40	SW
Tu 4	0:06	0.4	1:14	0.8	5:31	NE
	6:56	1.3	7:27	2.7	10:54	SW
	12:08	0.4	13:07	0.7	18:05	NE
	19:51	1.3	20:10	2.6	23:31	SW
We 5	1:05	0.3	2:05	0.7	6:11	NE
	7:48	1.4	8:16	2.8	11:47	SW
	12:59	0.4	13:58	0.7	18:47	NE
	20:42	1.4	21:01	2.7		
Th 6	1:55	0.3	2:51	0.6	0:20	SW
	8:35	1.4	9:03	2.8	6:52	NE
	13:48	0.3	14:47	0.6	12:39	SW
	21:26	1.4	21:46	2.8	19:30	NE
Fr 7	2:39	0.2	3:33	0.5	1:06	SW
	9:19	1.4	9:48	2.8	7:36	NE
	14:36	0.3	15:34	0.6	13:28	SW
	22:06	1.5	22:28	2.9	20:15	NE
Sa 8	3:20	0.2	4:12	0.5	1:50	SW
	10:01	1.4	10:32	2.8	8:24	NE
	15:22	0.3	16:18	0.6	14:15	SW
	22:42	1.5	23:08	2.9	20:59	NE
Su 9	4:00	0.2	4:52	0.5	2:34	SW
	10:41	1.4	11:17	2.7	9:16	NE
	16:07	0.3	17:01	0.7	14:58	SW
	23:15	1.5	23:46	2.8	21:46	NE
Mo 10	4:40	0.2	5:31	0.6	3:18	SW
	11:20	1.3	12:00	2.6	10:10	NE
	16:51	0.3	17:41	0.7	15:41	SW
	23:46	1.5			22:35	NE
Tu 11	5:20	0.3	0:23	2.7	4:03	SW
	12:00	1.3	6:13	0.7	11:06	NE
	17:34	0.3	12:44	2.5	16:22	SW
			18:21	0.8	23:26	NE
We 12	0:17	1.4	1:01	2.6	4:52	SW
	6:03	0.3	6:57	0.8	12:03	NE
	12:40	1.2	13:27	2.4	17:03	SW
	18:16	0.4	19:01	0.9		
Th 13	0:50	1.3	1:41	2.5	0:21	NE
	6:49	0.4	7:45	0.9	5:44	SW
	13:22	1.2	14:11	2.4	12:59	NE
	19:01	0.4	19:44	1	17:48	SW
Fr 14	1:29	1.3	2:27	2.4	1:22	NE
	7:41	0.4	8:39	1	6:38	SW
	14:08	1.2	14:57	2.3	13:56	NE
	19:49	0.5	20:32	1.1	18:40	SW
Sa 15	2:19	1.2	3:25	2.3	2:25	NE
	8:39	0.5	9:35	1	7:31	SW
	15:00	1.2	15:48	2.3	14:51	NE
	20:46	0.5	21:29	1.1	19:40	SW



	PICTON		HAVELOCK		TE AUMITI (FRENCH PASS)	
June 2024						
DATE	TIME	HT	TIME	HT	TIME	DIR
Su 16	3:24	1.2	4:35	2.3	3:24	NE
	9:38	0.5	10:30	1	8:22	SW
	15:59	1.1	16:49	2.2	15:45	NE
	21:54	0.6	22:38	1.1	20:45	SW
Mo 17	4:37	1.2	5:41	2.3	4:14	NE
	10:34	0.5	11:23	0.9	9:12	SW
	17:08	1.1	17:57	2.3	16:34	NE
	23:04	0.6	23:50	1.1	21:45	SW
Tu 18	5:43	1.2	6:38	2.4	4:55	NE
	11:27	0.5	12:14	0.9	10:01	SW
	18:21	1.2	19:02	2.4	17:20	NE
				22:36	SW	
We 19	0:08	0.5	0:52	0.9	5:31	NE
	6:41	1.2	7:28	2.4	10:49	SW
	12:18	0.5	13:05	0.8	18:00	NE
	19:27	1.2	19:59	2.5	23:21	SW
Th 20	1:01	0.4	1:43	0.8	6:06	NE
	7:32	1.2	8:15	2.5	11:38	SW
	13:08	0.4	13:55	0.8	18:38	NE
	20:21	1.3	20:49	2.7		
Fr 21	1:47	0.4	2:29	0.7	0:03	SW
	8:21	1.3	9:00	2.6	6:44	NE
	13:56	0.4	14:45	0.7	12:27	SW
	21:07	1.4	21:34	2.8	19:16	NE
Sa 22	2:28	0.3	3:12	0.6	0:45	SW
	9:09	1.3	9:45	2.7	7:25	NE
	14:43	0.4	15:33	0.6	13:15	SW
	21:48	1.5	22:16	2.9	19:56	NE
Su 23	3:08	0.2	3:54	0.5	1:27	SW
	9:56	1.3	10:30	2.7	8:11	NE
	15:29	0.3	16:20	0.6	14:01	SW
	22:28	1.5	22:57	3	20:39	NE
Mo 24	3:47	0.2	4:36	0.5	2:12	SW
	10:43	1.3	11:15	2.7	9:04	NE
	16:13	0.3	17:06	0.5	14:47	SW
	23:07	1.5	23:37	3	21:27	NE
Tu 25	4:27	0.2	5:20	0.5	2:58	SW
	11:29	1.3	12:00	2.7	10:02	NE
	16:56	0.3	17:50	0.6	15:32	SW
	23:46	1.5			22:19	NE
We 26	5:10	0.2	0:18	3	3:48	SW
	12:15	1.3	6:05	0.5	11:02	NE
	17:39	0.3	12:45	2.7	16:20	SW
			18:34	0.6	23:16	NE
Th 27	0:27	1.5	1:00	2.9	4:41	SW
	5:54	0.2	6:53	0.6	12:03	NE
	13:01	1.3	13:30	2.6	17:08	SW
	18:24	0.3	19:19	0.7		
Fr 28	1:12	1.5	1:46	2.8	0:19	NE
	6:43	0.2	7:44	0.7	5:36	SW
	13:46	1.3	14:16	2.5	13:05	NE
	19:11	0.3	20:08	0.8	18:01	SW
Sa 29	2:01	1.4	2:38	2.7	1:25	NE
	7:35	0.3	8:38	0.7	6:33	SW
	14:34	1.2	15:07	2.5	14:06	NE
	20:05	0.4	21:05	0.9	19:00	SW

PICTON

HAVELOCK

TE AUMITI
(FRENCH PASS)

June 2024

DATE	TIME	HT	TIME	HT	TIME	DIR
Su 30	2:58	1.3	3:38	2.5	2:30	NE
	8:30	0.3	9:35	0.8	7:31	SW
	15:29	1.2	16:06	2.4	15:08	NE
	21:08	0.4	22:13	0.9	20:07	SW

July 2024

Mo 1	4:01	1.3	4:46	2.5	3:31	NE
	9:28	0.4	10:33	0.8	8:30	SW
	16:35	1.2	17:19	2.3	16:07	NE
	22:20	0.5	23:30	1	21:15	SW
Tu 2	5:06	1.3	5:53	2.5	4:23	NE
	10:27	0.4	11:32	0.9	9:30	SW
	17:58	1.2	18:38	2.4	17:02	NE
	23:34	0.5			22:18	SW
We 3	6:10	1.2	0:42	0.9	5:10	NE
	11:26	0.4	6:54	2.5	10:32	SW
	19:21	1.2	12:32	0.9	17:51	NE
			19:48	2.5	23:14	SW
Th 4	0:39	0.4	1:42	0.8	5:53	NE
	7:12	1.2	7:51	2.6	11:32	SW
	12:25	0.4	13:32	0.8	18:36	NE
	20:25	1.3	20:44	2.6		
Fr 5	1:35	0.4	2:32	0.7	0:05	SW
	8:10	1.3	8:43	2.6	6:37	NE
	13:23	0.4	14:30	0.8	12:28	SW
	21:15	1.4	21:32	2.7	19:18	NE
Sa 6	2:23	0.3	3:18	0.6	0:51	SW
	9:03	1.3	9:33	2.6	7:23	NE
	14:19	0.4	15:23	0.8	13:18	SW
	21:57	1.4	22:15	2.8	20:00	NE
Su 7	3:07	0.3	3:59	0.6	1:35	SW
	9:52	1.3	10:20	2.7	8:09	NE
	15:10	0.4	16:10	0.7	14:01	SW
	22:34	1.5	22:53	2.9	20:42	NE
Mo 8	3:47	0.2	4:39	0.6	2:17	SW
	10:36	1.3	11:05	2.7	8:58	NE
	15:57	0.3	16:51	0.7	14:41	SW
	23:07	1.5	23:30	2.9	21:24	NE
Tu 9	4:27	0.2	5:17	0.6	2:57	SW
	11:16	1.3	11:46	2.6	9:46	NE
	16:39	0.3	17:28	0.7	15:17	SW
	23:37	1.5			22:07	NE
We 10	5:05	0.2	0:05	2.8	3:37	SW
	11:51	1.3	5:54	0.7	10:35	NE
	17:18	0.3	12:25	2.6	15:52	SW
			18:03	0.7	22:52	NE
Th 11	0:06	1.5	0:39	2.7	4:18	SW
	5:44	0.2	6:33	0.7	11:23	NE
	12:25	1.3	13:02	2.6	16:28	SW
	17:55	0.3	18:37	0.8	23:39	NE
Fr 12	0:36	1.4	1:13	2.6	4:59	SW
	6:22	0.3	7:12	0.8	12:11	NE
	12:59	1.3	13:38	2.5	17:05	SW
	18:32	0.3	19:14	0.8		



	PICTON		HAVELOCK		TE AUMITI (FRENCH PASS)	
July 2024						
DATE	TIME	HT	TIME	HT	TIME	DIR
Sa 13	1:08	1.4	1:48	2.5	0:30	NE
	7:03	0.3	7:54	0.8	5:42	SW
	13:34	1.3	14:14	2.5	13:01	NE
	19:09	0.4	19:54	0.9	17:47	SW
Su 14	1:46	1.3	2:28	2.4	1:25	NE
	7:46	0.4	8:39	0.9	6:29	SW
	14:12	1.3	14:53	2.4	13:52	NE
	19:52	0.4	20:41	1	18:38	SW
Mo 15	2:31	1.2	3:18	2.3	2:23	NE
	8:33	0.4	9:28	0.9	7:19	SW
	14:55	1.2	15:40	2.3	14:46	NE
	20:45	0.5	21:39	1	19:41	SW
Tu 16	3:27	1.2	4:24	2.2	3:20	NE
	9:25	0.5	10:22	1	8:12	SW
	15:49	1.2	16:46	2.3	15:46	NE
	21:57	0.6	22:51	1.1	20:52	SW
We 17	4:32	1.1	5:38	2.2	4:12	NE
	10:24	0.5	11:21	1	9:12	SW
	17:03	1.1	18:13	2.3	16:45	NE
	23:18	0.6			21:58	SW
Th 18	5:41	1.1	0:06	1	4:59	NE
	11:27	0.5	6:46	2.3	10:14	SW
	18:37	1.2	12:24	0.9	17:35	NE
			19:29	2.4	22:53	SW
Fr 19	0:27	0.5	1:11	0.9	5:42	NE
	6:52	1.1	7:46	2.4	11:14	SW
	12:31	0.5	13:28	0.9	18:19	NE
	19:56	1.2	20:28	2.6	23:42	SW
Sa 20	1:23	0.4	2:06	0.8	6:26	NE
	8:00	1.2	8:42	2.5	12:10	SW
	13:33	0.5	14:30	0.8	18:59	NE
	20:52	1.4	21:17	2.8		
Su 21	2:10	0.3	2:55	0.6	0:28	SW
	9:02	1.3	9:33	2.6	7:11	NE
	14:30	0.4	15:25	0.6	13:01	SW
	21:38	1.5	22:01	2.9	19:39	NE
Mo 22	2:54	0.2	3:40	0.5	1:13	SW
	9:56	1.3	10:21	2.7	8:00	NE
	15:20	0.3	16:14	0.5	13:47	SW
	22:19	1.6	22:42	3.1	20:22	NE
Tu 23	3:35	0.2	4:24	0.4	1:58	SW
	10:44	1.4	11:06	2.8	8:50	NE
	16:04	0.3	16:58	0.4	14:31	SW
	22:58	1.6	23:22	3.1	21:09	NE
We 24	4:16	0.1	5:07	0.4	2:45	SW
	11:27	1.4	11:49	2.8	9:44	NE
	16:45	0.2	17:39	0.4	15:16	SW
	23:36	1.6			21:59	NE
Th 25	4:57	0.1	0:02	3.1	3:32	SW
	12:07	1.4	5:50	0.4	10:40	NE
	17:24	0.2	12:30	2.8	15:59	SW
			18:19	0.4	22:53	NE
Fr 26	0:15	1.6	0:42	3	4:21	SW
	5:38	0.1	6:34	0.4	11:36	NE
	12:44	1.4	13:10	2.8	16:45	SW
	18:04	0.2	19:00	0.5	23:52	NE

	PICTON		HAVELOCK		TE AUMITI (FRENCH PASS)	
July 2024						
DATE	TIME	HT	TIME	HT	TIME	DIR
Sa 27	0:55	1.6	1:24	2.9	5:09	SW
	6:21	0.2	7:19	0.5	12:32	NE
	13:21	1.4	13:51	2.7	17:33	SW
	18:46	0.2	19:43	0.6		
Su 28	1:37	1.5	2:09	2.7	0:54	NE
	7:06	0.2	8:06	0.6	6:01	SW
	13:57	1.3	14:33	2.6	13:31	NE
	19:32	0.3	20:32	0.8	18:31	SW
Mo 29	2:24	1.4	3:01	2.6	1:59	NE
	7:53	0.3	8:55	0.8	6:56	SW
	14:35	1.3	15:23	2.4	14:33	NE
	20:28	0.4	21:33	0.9	19:40	SW
Tu 30	3:16	1.3	4:04	2.4	3:02	NE
	8:45	0.4	9:50	0.9	7:57	SW
	15:21	1.2	16:34	2.3	15:42	NE
	21:41	0.5	22:53	1	20:56	SW
We 31	4:18	1.2	5:16	2.3	4:01	NE
	9:44	0.5	10:51	1	9:08	SW
	16:49	1.1	18:13	2.2	16:49	NE
	23:07	0.5			22:06	SW

August 2024						
Th 1	5:30	1.1	0:20	1	4:55	NE
	10:49	0.5	6:28	2.3	10:21	SW
	19:06	1.1	12:02	1.1	17:46	NE
			19:36	2.3	23:04	SW
Fr 2	0:23	0.5	1:29	0.9	5:44	NE
	6:48	1.1	7:34	2.4	11:28	SW
	12:00	0.5	13:21	1	18:30	NE
	20:21	1.2	20:35	2.5	23:54	SW
Sa 3	1:23	0.4	2:24	0.8	6:30	NE
	8:04	1.2	8:32	2.5	12:23	SW
	13:10	0.5	14:35	0.9	19:09	NE
	21:09	1.3	21:21	2.7		
Su 4	2:13	0.3	3:10	0.7	0:38	SW
	9:04	1.2	9:24	2.6	7:14	NE
	14:12	0.5	15:29	0.8	13:07	SW
	21:48	1.4	22:01	2.8	19:46	NE
Mo 5	2:55	0.3	3:49	0.6	1:19	SW
	9:51	1.3	10:09	2.6	7:56	NE
	15:04	0.4	16:08	0.7	13:45	SW
	22:22	1.5	22:36	2.9	20:21	NE
Tu 6	3:34	0.2	4:24	0.6	1:56	SW
	10:30	1.4	10:50	2.7	8:37	NE
	15:46	0.3	16:40	0.7	14:18	SW
	22:51	1.5	23:09	2.9	20:57	NE
We 7	4:10	0.2	4:57	0.6	2:31	SW
	11:02	1.4	11:27	2.7	9:18	NE
	16:22	0.2	17:09	0.6	14:49	SW
	23:18	1.5	23:40	2.9	21:34	NE
Th 8	4:44	0.2	5:29	0.6	3:06	SW
	11:32	1.4	12:00	2.7	9:58	NE
	16:55	0.2	17:38	0.6	15:19	SW
	23:43	1.5			22:13	NE



	PICTON		HAVELOCK		TE AUMITI (FRENCH PASS)	
August 2024						
DATE	TIME	HT	TIME	HT	TIME	DIR
Fr 9	5:17	0.2	0:10	2.8	3:41	SW
	12:00	1.4	6:02	0.6	10:40	NE
	17:27	0.2	12:32	2.7	15:50	SW
			18:09	0.6	22:55	NE
Sa 10	0:09	1.5	0:39	2.7	4:17	SW
	5:50	0.2	6:36	0.6	11:21	NE
	12:28	1.4	13:02	2.7	16:23	SW
	17:57	0.2	18:42	0.6	23:38	NE
Su 11	0:37	1.4	1:09	2.6	4:54	SW
	6:24	0.2	7:12	0.7	12:04	NE
	12:57	1.4	13:33	2.6	16:59	SW
	18:29	0.3	19:17	0.7		
Mo 12	1:07	1.4	1:42	2.5	0:27	NE
	6:58	0.3	7:51	0.8	5:35	SW
	13:28	1.4	14:06	2.5	12:51	NE
	19:03	0.3	19:58	0.8	17:43	SW
Tu 13	1:44	1.3	2:20	2.4	1:23	NE
	7:36	0.4	8:35	0.9	6:23	SW
	14:02	1.3	14:45	2.4	13:45	NE
	19:43	0.4	20:50	1	18:42	SW
We 14	2:29	1.2	3:12	2.3	2:26	NE
	8:22	0.4	9:28	1	7:19	SW
	14:44	1.2	15:39	2.3	14:52	NE
	20:43	0.5	22:00	1.1	20:06	SW
Th 15	3:29	1.1	4:32	2.1	3:33	NE
	9:21	0.5	10:32	1.1	8:28	SW
	15:46	1.1	17:24	2.2	16:10	NE
	22:26	0.6	23:27	1.1	21:29	SW
Fr 16	4:52	1.1	6:09	2.2	4:34	NE
	10:41	0.6	11:50	1.1	9:46	SW
	17:52	1.1	19:05	2.3	17:15	NE
	23:59	0.6			22:33	SW
Sa 17	6:30	1.1	0:47	1	5:26	NE
	12:06	0.6	7:27	2.3	10:56	SW
	19:42	1.2	13:13	1	18:02	NE
			20:10	2.5	23:24	SW
Su 18	1:04	0.5	1:49	0.8	6:14	NE
	8:01	1.2	8:29	2.4	11:53	SW
	13:21	0.5	14:23	0.8	18:41	NE
	20:40	1.4	21:00	2.8		
Mo 19	1:54	0.3	2:40	0.6	0:11	SW
	9:03	1.3	9:21	2.6	6:59	NE
	14:20	0.4	15:18	0.6	12:42	SW
	21:24	1.5	21:43	3	19:21	NE
Tu 20	2:38	0.2	3:25	0.5	0:55	SW
	9:51	1.4	10:08	2.8	7:44	NE
	15:07	0.3	16:03	0.4	13:27	SW
	22:03	1.6	22:23	3.2	20:01	NE
We 21	3:19	0.1	4:08	0.3	1:40	SW
	10:32	1.5	10:50	2.9	8:31	NE
	15:48	0.2	16:43	0.3	14:10	SW
	22:40	1.7	23:02	3.2	20:46	NE
Th 22	3:58	0.1	4:49	0.3	2:25	SW
	11:09	1.5	11:30	3	9:20	NE
	16:25	0.1	17:21	0.3	14:52	SW
	23:17	1.7	23:40	3.2	21:34	NE

	PICTON		HAVELOCK		TE AUMITI (FRENCH PASS)	
August 2024						
DATE	TIME	HT	TIME	HT	TIME	DIR
Fr 23	4:36	0	5:29	0.3	3:10	SW
	11:44	1.5	12:08	3	10:10	NE
	17:02	0.1	17:57	0.3	15:34	SW
	23:53	1.7			22:25	NE
Sa 24	5:15	0.1	0:18	3.1	3:55	SW
	12:17	1.5	6:09	0.3	11:03	NE
	17:39	0.1	12:45	2.9	16:19	SW
			18:35	0.4	23:22	NE
Su 25	0:29	1.6	0:57	3	4:42	SW
	5:54	0.1	6:49	0.5	11:57	NE
	12:48	1.5	13:22	2.8	17:05	SW
	18:17	0.2	19:15	0.6		
Mo 26	1:06	1.5	1:39	2.8	0:21	NE
	6:34	0.2	7:31	0.6	5:30	SW
	13:17	1.4	14:00	2.6	12:55	NE
	18:58	0.3	19:59	0.8	18:02	SW
Tu 27	1:45	1.4	2:26	2.5	1:27	NE
	7:17	0.3	8:16	0.8	6:24	SW
	13:45	1.3	14:44	2.4	14:00	NE
	19:48	0.4	20:55	1	19:17	SW
We 28	2:31	1.2	3:25	2.3	2:35	NE
	8:05	0.4	9:08	1	7:29	SW
	14:15	1.2	15:52	2.2	15:19	NE
	21:01	0.5	22:20	1.1	20:45	SW
Th 29	3:31	1.1	4:43	2.2	3:45	NE
	9:04	0.5	10:13	1.1	8:53	SW
	15:00	1.1	17:56	2.1	16:43	NE
	22:45	0.6			21:57	SW
Fr 30	4:58	1	0:11	1.1	4:48	NE
	10:21	0.6	6:09	2.2	10:18	SW
	19:09	1.1	11:44	1.2	17:41	NE
			19:28	2.3	22:54	SW
Sa 31	0:11	0.5	1:24	1	5:40	NE
	6:49	1	7:24	2.2	11:22	SW
	11:47	0.6	13:44	1.1	18:21	NE
	20:14	1.2	20:24	2.5	23:41	SW

September 2024						
Su 1	1:13	0.5	2:16	0.9	6:24	NE
	8:10	1.1	8:24	2.4	12:10	SW
	13:06	0.6	14:50	1	18:54	NE
	20:56	1.4	21:05	2.7		
Mo 2	2:00	0.4	2:57	0.7	0:21	SW
	9:00	1.3	9:12	2.5	7:02	NE
	14:08	0.4	15:28	0.8	12:47	SW
	21:30	1.5	21:40	2.8	19:25	NE
Tu 3	2:40	0.3	3:31	0.6	0:57	SW
	9:38	1.4	9:53	2.7	7:37	NE
	14:53	0.3	15:55	0.7	13:20	SW
	21:59	1.5	22:12	2.9	19:56	NE
We 4	3:15	0.2	4:01	0.5	1:30	SW
	10:10	1.4	10:28	2.8	8:11	NE
	15:28	0.2	16:18	0.6	13:49	SW
	22:25	1.6	22:42	3	20:27	NE



	PICTON		HAVELOCK		TE AUMITI (FRENCH PASS)	
September 2024						
DATE	TIME	HT	TIME	HT	TIME	DIR
Th 5	3:47	0.1	4:30	0.5	2:02	SW
	10:38	1.5	11:01	2.9	8:46	NE
	15:59	0.2	16:44	0.5	14:17	SW
	22:50	1.6	23:11	3	20:59	NE
Fr 6	4:18	0.1	4:59	0.5	2:35	SW
	11:05	1.5	11:31	2.9	9:23	NE
	16:28	0.2	17:11	0.5	14:45	SW
	23:13	1.6	23:39	2.9	21:34	NE
Sa 7	4:48	0.1	5:29	0.5	3:07	SW
	11:30	1.5	12:00	2.9	9:58	NE
	16:56	0.1	17:40	0.5	15:14	SW
	23:37	1.5			22:11	NE
Su 8	5:17	0.1	0:06	2.8	3:40	SW
	11:56	1.5	6:01	0.5	10:36	NE
	17:24	0.2	12:29	2.8	15:46	SW
			18:11	0.5	22:51	NE
Mo 9	0:02	1.5	0:34	2.7	4:15	SW
	5:47	0.2	6:35	0.6	11:17	NE
	12:23	1.5	12:58	2.7	16:20	SW
	17:53	0.2	18:45	0.6	23:37	NE
Tu 10	0:30	1.4	1:04	2.6	4:55	SW
	6:18	0.3	7:11	0.7	12:01	NE
	12:51	1.4	13:29	2.6	17:02	SW
	18:24	0.3	19:23	0.8		
We 11	1:01	1.3	1:41	2.4	0:33	NE
	6:53	0.3	7:53	0.8	5:40	SW
	13:22	1.3	14:06	2.5	12:55	NE
	19:02	0.4	20:13	0.9	17:59	SW
Th 12	1:40	1.2	2:28	2.2	1:43	NE
	7:34	0.4	8:45	1	6:39	SW
	13:58	1.2	14:57	2.3	14:07	NE
	19:54	0.5	21:22	1.1	19:30	SW
Fr 13	2:36	1.1	3:42	2.1	3:02	NE
	8:33	0.6	9:53	1.1	7:56	SW
	14:51	1.1	16:45	2.2	15:41	NE
	21:41	0.6	22:57	1.1	21:05	SW
Sa 14	4:17	1	5:41	2.1	4:15	NE
	10:09	0.6	11:25	1.2	9:23	SW
	17:24	1.1	18:43	2.3	16:55	NE
	23:33	0.6			22:10	SW
Su 15	6:34	1	0:26	1	5:14	NE
	11:50	0.6	7:10	2.2	10:36	SW
	19:24	1.2	13:04	1	17:42	NE
			19:49	2.6	23:02	SW
Mo 16	0:42	0.5	1:30	0.8	6:00	NE
	7:59	1.2	8:13	2.5	11:31	SW
	13:07	0.5	14:14	0.8	18:21	NE
	20:19	1.4	20:37	2.8	23:48	SW
Tu 17	1:33	0.3	2:20	0.6	6:42	NE
	8:51	1.3	9:04	2.7	12:19	SW
	14:03	0.4	15:03	0.6	18:59	NE
	21:01	1.5	21:19	3.1		
We 18	2:16	0.2	3:04	0.4	0:33	SW
	9:33	1.5	9:48	2.9	7:24	NE
	14:47	0.2	15:44	0.4	13:03	SW
	21:39	1.7	21:59	3.2	19:37	NE

	PICTON		HAVELOCK		TE AUMITI (FRENCH PASS)	
September 2024						
DATE	TIME	HT	TIME	HT	TIME	DIR
Th 19	2:56	0.1	3:45	0.3	1:17	SW
	10:10	1.5	10:29	3	8:07	NE
	15:26	0.1	16:21	0.2	13:46	SW
	22:16	1.7	22:37	3.3	20:20	NE
Fr 20	3:34	0	4:24	0.2	2:01	SW
	10:45	1.6	11:07	3.1	8:53	NE
	16:02	0	16:57	0.2	14:27	SW
	22:51	1.7	23:14	3.2	21:05	NE
Sa 21	4:11	0	5:03	0.2	2:46	SW
	11:18	1.6	11:44	3.1	9:41	NE
	16:38	0	17:33	0.2	15:10	SW
	23:25	1.7	23:52	3.1	21:56	NE
Su 22	4:48	0.1	5:41	0.3	3:30	SW
	11:49	1.6	12:20	3	10:31	NE
	17:13	0.1	18:09	0.4	15:53	SW
	23:59	1.6			22:51	NE
Mo 23	5:26	0.1	0:30	2.9	4:15	SW
	12:17	1.5	6:20	0.5	11:24	NE
	17:50	0.1	12:55	2.8	16:40	SW
			18:47	0.6	23:52	NE
Tu 24	0:33	1.5	1:11	2.7	5:03	SW
	6:04	0.2	7:00	0.6	12:21	NE
	12:43	1.4	13:32	2.6	17:37	SW
	18:29	0.3	19:30	0.8		
We 25	1:08	1.3	1:57	2.5	0:58	NE
	6:45	0.3	7:43	0.8	5:57	SW
	13:08	1.3	14:15	2.4	13:30	NE
	19:16	0.4	20:25	1	18:59	SW
Th 26	1:50	1.2	2:55	2.2	2:14	NE
	7:32	0.4	8:33	1.1	7:06	SW
	13:34	1.2	15:20	2.2	14:57	NE
	20:29	0.6	21:55	1.2	20:31	SW
Fr 27	2:49	1	4:16	2.1	3:30	NE
	8:33	0.6	9:39	1.3	8:38	SW
	14:10	1.1	17:39	2.1	16:30	NE
	22:24	0.6			21:41	SW
Sa 28	4:41	1	0:01	1.2	4:38	NE
	10:02	0.7	5:52	2.1	10:01	SW
	18:52	1.1	11:44	1.3	17:26	NE
	23:52	0.6	19:09	2.3	22:35	SW
Su 29	7:50	1	1:08	1	6:29	NE
	12:37	0.6	8:10	2.2	12:01	SW
	20:50	1.2	14:46	1.2	19:01	NE
			21:00	2.5		
Mo 30	1:53	0.5	2:55	0.9	0:17	SW
	8:55	1.2	9:07	2.4	7:07	NE
	13:56	0.5	15:33	1	12:44	SW
	21:29	1.3	21:39	2.7	19:30	NE



CRUISE GUIDE

TO THE
MARLBOROUGH SOUNDS



It's like having a local on board!

The interactive navigational chart gives details on over 350 bays within the Marlborough Sounds, including information on:

- Moorings
- Anchorages
- Point of interest
- Flora and fauna
- Three live camera feeds

Free

cruiseguide.co.nz



**For all your mooring installation, service,
salvage & on water logistics - we're here to help!**


JOHNSON'S
BARGE SERVICE LTD

Pelorus, D'Urville, Nelson & Queen Charlotte
03 574 2434
info@johnsonsbargeservice.co.nz


KENNY BARGING
PICTON

Queen Charlotte
03 573 6155
office@kennybarging.co.nz



interislander

Experience Cook Strait the way Kiwis have for 60 years



Book now at

[Interislander.co.nz](https://www.interislander.co.nz)