

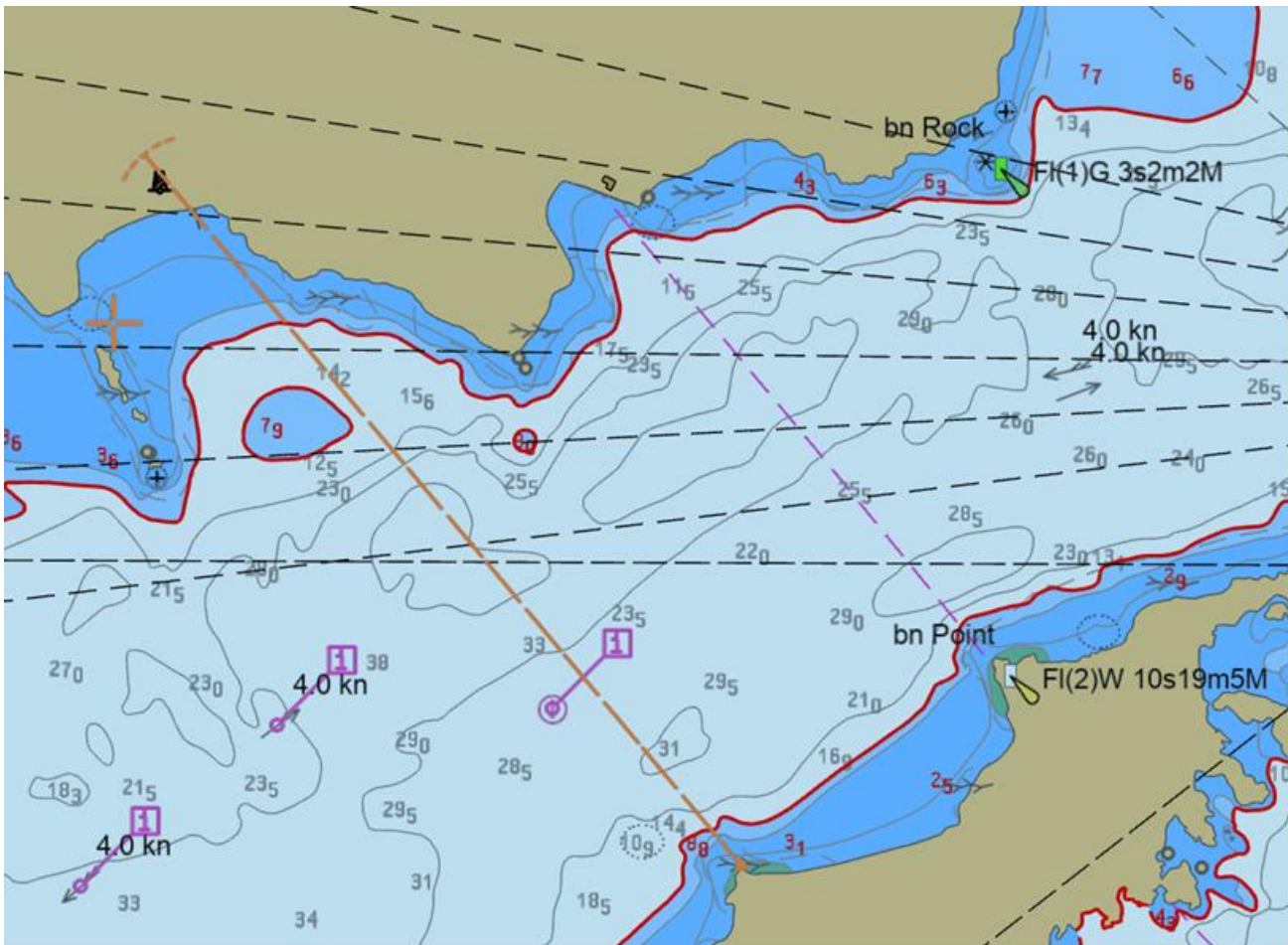
Harbour Notice 12-2024

Pursuant to section 6.1 of the Marlborough Navigation Bylaw 2023, the CNZ boundary bearing 320°T from Scraggy Point light is hereby suspended.

A new CNZ inner boundary is in effect from position 41°13.069' S 174° 17.999' E, bearing 320°T to the opposing shore on Arapaoa Island.

The existing rules set out in section 4 of the Bylaw regarding the conduct of ships over 350 GRT or a tug and barge of over 40m in length in the CNZ remain in effect.

The image below shows the existing boundary in magenta and the new boundary in orange.



This change has been requested to be made with Land Information NZ on the official nautical charts.

Jake Oliver

Harbourmaster