

**Minutes for Meeting of the
Sounds Advisory Group
held at the Port Marlborough Pavilion, Waikawa Road,
Picton on Monday, 18 March 2024
commencing at 10.00 am.**

Present: Clr Faulls, Clr Innes, Clr Minehan, Monyeen Wedge (Queen Charlotte Sound), Vic Koller (Moetapu Bay), Wayne Boustridge (Te Whanganui/Port Underwood), John Cretney (Cissy Bay), Tim Greenhough (Okiwi Bay), George Shallcrass (Chair, Top of The South Wood Council), Steve Murrin (Marlborough Roads), Shon Emerson (Kaiuma Bay), Lynley Perkins (Central Pelorus/Te Hoiere), with Kevin Bright (Kenepuru & Central Sounds Residents Association).

MDC Staff Attending: Alan Johnson (Environmental Science & Monitoring Manager), Dr Sarah Pearson and Clemetine Rankin (Strategic Planners), Captain Jake Oliver (Harbourmaster), Captain James Oliver (Deputy Harbourmaster) and in attendance, Bernadette Brooklands (Secretary).

1. Welcome and Introductions

Clr Faulls welcomed attendees and introduced Kevin Bright from the Kenepuru & Central Sounds Residents Association.

Apologies

Dave Hayes (DOC), Rawinia Puna (French Pass), Ross Withell (Kenepuru & Central Sounds - Kevin Bright from Kenepuru & Central Sounds Residents Association attending in his place), Katie Littlewood (Principal Coastal Scientist), Jorgia McMillan (Coastal Scientist), Dick Kearsley (Cissy Bay), Eric Jorgensen (Sustainable Seas), Poneke Rene (Rangitoto ki te Tonga/D'Urville Island, Heather Graham (MDC Small Townships Projects Coordinator), Clr Burgess, Te Ātiawa Manawhenua Ki Te Tau Ihu Trust and Ned Wells (MFA).

Due to no Teams link for this hui, Vikki Ambrose (MPI) and Emma Hopkinson-Young (Outer Pelorus) are apologies.

2. Confirmation of minutes 27 November 2023 – previously emailed to members.

The minutes of 27 November were taken as read.
Clr Faulls moved / Tim Greenhough – carried.

3. Actions from the previous meeting.

Action	Person Responsible	Outcome
1 Portage update (ongoing item).	Clr Faulls	Enquire with the Compliance Manager and email comments to team
2 Eric to speak with Ned Wells from MFA about commercial fishery membership involvement rather than Fisheries.	Eric Jorgensen / Ned Wells	Ongoing Apologies today
3 Are boats required to have a limited decimal level.	Captain Oliver.	Ongoing Captain Oliver has emailed MNZ and is awaiting a response
4 Provide Clr Faulls with the community meeting schedule.	Clr Faulls / Rawinia Puna	Ongoing
5 Clr Faulls to speak to Dean Heiford regarding further water taxi subsidies for Kenepuru Sounds businesses.	Clr Faulls	Completed Water taxi subsidy is still available

4. **Update on the National Policy Statement for Fresh Water Management** (Dr Sarah Pearson and Clementine Rankin, Strategic Planners, MDC). **See Appendix 1**

- Dr Pearson presented her update on the freshwater management plan due to be changed by Central Government.
- Marlborough already has a new modern plan that gives effect to many of the requirements of the NPSFM as the plan was notified in 2016 and has since been going through hearings, appeals and mediation. Therefore, it gives effect to the 2014 and 2017 version of the NPSFM.
- Many other council's plans were developed in the late 1990's after the RMA came out and have not been updated since, so they are very outdated.
- The MEP water provisions (objectives, policies, rules and methods) are now what we call operative and need to be complied with.
- As such there is not a desperate need to update them, they are already providing better environmental protection and direction to our region on managing freshwater resources and what activities can be done.
- They are also certain, as such we do not have a strong need to rush to do a plan change and we can wait until the replacement NPSFM comes out in 2026.
- The farm plan regulations have not been changed by the Government however the official order from the Government will not come into effect until next year.
- Please advise your community groups to connect with feedback to Council on this matter.

Questions/Answers

- With climate change the summers are getting drier however it is property owners' responsibility to use water tanks to store water.

Attendance: 10.40 am Clr Innes and Steve Murrin joined the hui.

Attendance: 10.52 am Dr Pearson and Clementine Rankin left the hui.

5. **Marlborough Roads Recovery Update** (Steve Murrin, Manager Marlborough Roads)

To check the status of a road before you travel, please visit the [Civil Defence Emergency Map](#).

- Funding - Business Case has been endorsed by NZTA. Consultation about to commence on how Council will raise their share. **See Appendix 2 for media release and community meeting date schedule.**
- Stage 1 & 2 works should be completed by September. Stage 3 works to commence 1 July.
- Awatere Zone - Two culverts to replace on Taylor Pass Road and then zone completely repaired.
- Waihopai Valley - Completed except for the new Māori Ford bridge. Construction starting after Easter for completion end of November.
- Northbank/Onamalutu Roads - River protection works underway. Should be completed by end of May.
- French Pass Road - Still several walls to complete for stage 1 & 2 on French Pass Road and Tennyson Hill. Stage 3 works currently being programmed.
- Pelorus Zone - A culvert to replace on Kaiuma Road, Daltons Bridge Pier protection completed. River repair works just about ready to go out for pricing. Works to complete Maungatapu Road to commence after Easter.
- Queen Charlotte Drive - A number of repairs underway including Cullen's Point. Road closures from 9.00 am to 3.00 pm at Shakespeare Bay commencing 8 April for two weeks maximum.
- Port Underwood Road - Retaining wall at Whatamango just been let to Moores Contracting starting 8 April. Retreat at 4.8 km just pricing, hoping to start mid-April.
- Kenepuru Road - Torea Wall starting Wednesday after Easter. Seal repairs should commence later this week. Tidy up of slip material and bunds to be done before winter.

Questions/Answers

- Steve to email Vic Koller and update him on the roading project for Moetapu. Action point noted.
- Pilot vehicles have been used to provide safety for road users while trucks are travelling on roads such as Queen Charlotte Drive.
- Waitaria Bay Jetty can be repaired with insurance payout.
- Shon Emerson complimented Marlborough Roads on the excellent work that is being done on Queen Charlotte Drive. Shon noted that there is heavy vegetation on Kaiuma Bay Road and tourists are finding navigating the road difficult due to visibility being hindered by weed growth on the road. Steve will investigate this complaint.
- Steve advised that it is difficult to monitor the traffic on the Kenepuru Road to prevent non-residents travelling on the road.
- The review of Port Underwood Road is for trucks only. Wayne Boustridge asked if there will be a budget breakdown for the community to see for the Port Underwood roading repairs. Steve advised that the first budget breakdown has been received.
- When will the Kenepuru Road be classed back to class 1 for vehicles? Steve advised that it would be at least three years to have all classes back on this road.
- GNS will be conducting a road slip detection survey over the next three years to assist Council with forward planning.

Attendance: 11.27 am Steve withdrew from the hui.

6. **Tide Model and Introduction of New Deputy Harbourmaster** (Captains Jake Oliver and James Oliver) **See Appendix 2**

- Captain Oliver presented his PowerPoint presentation on the Tide Model.
- See here for the new Tory Channel app <https://mdc-tory-channel-main-prod.open-apps.oceanum.io/>

Attendance: 12.30 am Captains withdrew from the hui.

7. **DOC Update** (Dave Hayes)

A written update was provided by Dave as he was unable to attend today's meeting due to prior commitments.

Department of Conservation Activities and Issues of Interest. Prepared for Sounds Advisory Group meeting 18 March 2024.

Heritage and Visitors

- An increasing fire risk has led to some early messaging going out to businesses connected with the Queen Charlotte Track that sections of the track may need to be closed if significant rain doesn't come soon.
- The two serviced campgrounds at Pelorus Bridge and Momorangi have continued to create a number of urgent issues, usually connected to sewerage or fresh water supply. Camp use has been steady over the last two months with a usual drop off once schools started up again.
- A coffee cart concession operated at Momorangi over the summer season. This was very successful, and 500 coffees a day were being served over the peak period.
- A new toilet has been put in at Schoolhouse Bay on the Queen Charlotte Track. This increases the capacity of containment and will save on barging costs for emptying.
- This was the first summer that bikes were permitted between Meretoto/Ship Cove and Kenepuru Saddle. All track users were encouraged to give feedback. Overall, there has been far more positive feedback than negative. There was one reported incident involving a walker and a biker.
- The Pelorus Valley has been busy as all hut books had to be replaced.

- We have had some difficulty in finding replacement campground managers at French Pass. A scarcity of accommodation is a limiting factor. We are following up one lead at the moment.

Biodiversity.

- Further monitoring for plague skinks at Havelock has shown no new sightings. The Technical Advisory Group has been confident enough to say that they believe that they have been eradicated and therefore this marks the first time that a lizard pest has been removed from an area. DOC had a large part to play in the latter stages of this once MPI deemed that these skinks were here to stay. The risks of transfer to susceptible island from Havelock was seen to be too high by DOC to not continue with the control work.
- A replacement community trustee has been appointed to the Te Hoiere Kaitiaki Trust. All positions on the Trust are currently filled.
- Staff spent a couple of days in the Long Island Marine Reserve monitoring blue cod using an underwater camera set up. Results are being written up now.
- The annual dive monitoring has also been carried out in the Marine Reserve. Areas of the invasive Parchment Worm were noted which is of concern.
- A boat was spotted approaching Takapourewa/Stephens Island. A dog was let off on the beach and then retrieved after it completed its ablutions. Fortunately, the boat did not land and no-one else got off. Even so, a cautious approach is always taken and extra pest monitoring devices were deployed in the area.
- Staff are monitoring wasps at key sites at the moment. Numbers are steadily increasing and control with Vesplex is now underway.
- A further 22 Orange Fronted Parakeets have been transferred to Oruawairua/Blumine Island. They were raised in Christchurch. All birds seem to be enjoying their new surroundings.

Community

- The Te Hoiere project held a field day in the Linkwater catchment which involved visits to three farms to witness riparian enhancements and progress on improvements to fish passage.
- We have had a successful volunteer camp host season over the summer. Many of our hosts have done this work before, either in the Sounds or in other districts. Hosts were deployed at Nydia Bay, Camp Bay and at Whatamango campsite.

Other

- Our Director, Regional Operations, Roy Grose is retiring next month. Many of you will know Roy from his 25 years in the Sounds Manager role. Roy's replacement is Martin Rodd who returns to Regional Operations after spending the last 10 years in the partnerships group. Martin is very familiar with the top of the South Island.

8. Other Council Updates (Alan Johnson). See Appendix 2

- A discussion was held on the Long Term Plan document. The Long Term Plan will be available in April for the community to contribute to. Links will be on the Council website. Please ensure that members pass this information on to their community groups. **See Appendix 2**
- Working for Nature grant scheme will be open for a month to apply for funding for protection (pest management), restoration plantings and education (eg educational signage). Please advise your community groups to apply for funding. Zeke Hoskins from MDC is the contact person for the Working for Nature grant. See further information here <https://www.marlborough.govt.nz/our-community/grants-and-awards/working-for-naturemahimo-te-taiiao>
- Monyeen asked if Zeke Hoskins could come and speak to the next SAG meeting. Action point noted.
- Media release for the drought status of Marlborough has been released. The rainfall report was presented to the Environment and Planning Committee in early March. See copy of the information package and the agenda items here <https://www.marlborough.govt.nz/your->

- A discussion was held on Elaine Bay and Duncan Bay Residents Associations request to join the Sounds Advisory Group. The Penzance/Tuna Bay Residents Association (PTBPOA) will cover the Tennyson Inlet area. Members voted to invite these groups to join. Clr Faulls moved/Clr Innes carried. Action point noted.
- Council biosecurity staff have just released old man's beard sawflies (*Monophadnus spinolae*) in the Awatere Valley in a bid to have some impact on this highly invasive pest plant. Old man's beard sawflies were first imported by Manaaki Whenua Landcare Research in 1997 from central Europe but they did not establish readily. In 2018 a new population was imported which has grown successfully. The larvae are the damaging life stage of the sawfly, feeding on the leaves. A single larva may eat several leaves, sometimes only leaving the central vein intact.

9. Sounds Representatives Updates

I. MPI Update (Vikki Ambrose) – Apology

II. Rangitoto ki te Tonga/D'Urville Island (Poneke Rene) - Apology

III. Kenepuru & Central Sounds Residents Association (KCSRA) - Ross an apology, however Kevin Bright attending on his behalf.

- Fulton Hogan executives meeting with the association over the roading issues.
- Rubbish tip site option is being considered by Council.
- The community do question whether \$7 million should be funding a marine survey when this money could be used for the roads. The community are impressed with how available the Mayor, Deputy Mayor and MDC Chief Executive, Mark Wheeler have been around the Marlborough Sounds Future Access Study.

IV. Moetapu Residents Association (Mahau Sound Outward Bound) (Vic Koller)

- Steve Murrin will connect with Vic around a programme of works for Moetapu Bay Road.
- Vespex completed with the help of six volunteers.
- Deer are being culled by ground hunting only and helicopters will no longer be used in the area.
- Stoats and possums are still an issue. Two new possum traps have been purchased and will be trialed in Mahu area.
- Sea level rise causing issues at the new jetty due to sediment levels.

V. Queen Charlotte Residents Association (Monyeen Wedge)

- Residents not replanting where the slips occurred in the floods. This may cause future issues if a rain event reoccurs.
- Rabbit population increased.
- Concern if ungulate control undertaken in Lochmara that the carcasses will cause pollution to the streams. The Marlborough Sounds Reservation Trust will visit Monyeen to discuss her concerns.
- Monyeen would like the group to acknowledge the retirement of Director, Regional Operations, Roy Grose from DOC and a letter of thanks for his years of work to be sent. Clr Faulls will draft a letter. Action point noted.

VI. Te Whanganui/Port Underwood Residents Association (Wayne Boustridge)

- BAU

VII. Top of The South Wood Council (George Shallcrass)

- BAU

VIII. Te Aumiti/French Pass (Rawinia Puna) – Apology

IX. Outer Pelorus (Emma Hopkinson-Young) – Apology

X. Central Pelorus (Hopewell) (Lynley Perkins)

- New waste depot is due to open in July.

- Community appreciates the road access and water access and the amazing service they receive from NZ Post despite the roading issues.

XI. Okiwi Bay (Tim Greenhough)

- Water system is now fully compliant.
- Okiwi Bay association will be applying for a new consent for vegetation burning.
- The blackberries have been sprayed behind the burn pile in the wetland, however they have missed a large section. This is Council owned property.

XII. Cissy Bay (John Cretney)

- Roading access has improved.
- AGM at the end of the month.
- Concern about new pine plantings above bay given wilding pine concerns and given that an existing forestry block above the houses on west of bay is leading to a loss of sunlight and satellite access.
- Water scheme operating well despite recent drought and Very Small Community (VSC) scheme requirements are straightforward to comply with water testing twice yearly.

XIII. Kaiuma Bay (Shon Emerson)

- There are two septic systems in the Kaiuma Bay development that the resident's association are trying to find out the resource consent status on. Clr Innes will assist with the association contacting the Council Consents and Compliance Group manager.
- Dredging will require a resource consent from Council for the jetty area.
- Water frontage of the subdivision is part DOC and part Council land. The contact people to find out what part of the land belongs to DOC or Council, is the Parks and Reserves team.
- Water flooding across the road when the tide is high. It is felt this issue may be caused by sediments.

XIV. Te Ātiawa Manawhenua Ki Te Tau Ihu Trust (Kristie Paki Paki) – Apology

XV. Marine Farming Association (Ned Wells) – Apology

10. General Business

Future meetings all commence at 10.00 am and will be held at Council.

- Monday, 17 June – MDC, Committee Room **PLEASE NOTE NEW DATE is Monday 8 July**
- Monday, 19 August – MDC, Committee Room
- Monday, 25 November – MDC, Committee Room

There being no further general business, the hui closed at 2.54 pm.

11. Matters Arising

	Action	Person Responsible
1	Portage update (ongoing item). Get update from Compliance Manager and email comments to team.	Clr Faulls
2	Eric to speak with Ned Wells from MFA about commercial fishery membership involvement rather than Fisheries.	Eric Jorgensen / Ned Wells
3	Are boats required to have a limited decimal level. Captain Oliver has emailed MNZ and is awaiting a response.	Captain Oliver.
4	Provided Clr Faulls with the community meeting schedule.	Clr Faulls / Rawinia Puna
5	Invite Heather Graham from MDC Small Townships Project to our next hui.	Clr Faulls
6	Email Vic Koller and update him on the roading project for Moetapu.	Steve Murrin
7	Invite the Marlborough Restoration Trust to speak at next meeting	Clr Faulls

	Action	Person Responsible
8	Invite Elaine Bay and Duncan Bay Residents Association to join SAG	Clr Fauls
9	Monyeen asked if Zeke Hoskins could come and speak to the next SAG meeting	Clr Fauls/ Alan Johnson
10	Letter of acknowledgement and thanks to the years of dedicated work by DOCs Director of Regional Operations, Roy Grose who is retiring. Clr Fauls will draft a letter on behalf of SAG.	Clr Fauls

Appendix 1 Update on the National Policy Statement for Fresh Water Management (Dr Sarah Pearson)



Update on the National Policy Statement for Freshwater Management

More changes.....

March 2024

marlborough.govt.nz



Change to the NPSFM are not new!

Changed 3 times since it came out in under a 10-year period.

Regional Plans are supposed to have a 10-year life (many have longer!).



Proposed Marlborough Environment Plan – Notified 2016 – gave effect to 2014 NPSFM version and through the hearings process the 2017 version.



marlborough.govt.nz

What happened?



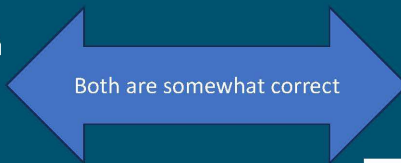
- The new Government have said they want to review and replace the NPSFM 2020.
- Replacement won't be out till 2026.
- To allow for the replacement process the deadline for Councils to give effect to the NPSFM 2020 has been extended from end of 2024 to end of 2027.

Current Situation

NPSFM 2020 must be given effect to, but it will be replaced within 2 years.

What does this actually mean for councils? = Uncertainty

Councils need to continue with plan changes to meet the NPSFM 2020 as soon as reasonably practicable.

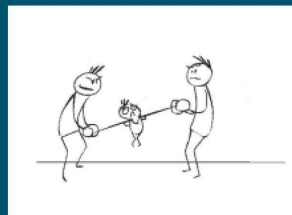


Councils should stop work until there is the replacement legislation, or wasting ratepayer money, and everyone's time.

It's Not A Merry Christmas For The Environment
 Thursday, 21 December 2023, 2:06 pm
 Press Release: Environmental Defence Society

New Government crashes environment
 The coalition agreements contain many actions on the environment - most of them regressive and some that could take 40 back decades, writes environmentalist Gary Taylor

Where does that leave Councils?



Work on water reform slows to a trickle
 With existing plans due to be scrapped, councils await direction from government

“Simply pushing out the implementation dates probably won't be enough to have councils stop work on this because the NPS-FM requires councils to give effect to the regulations 'as soon as practicable'.”

What are councils doing?

Depends on the answer to 3 questions.....

1. How old are their current regional plans?
2. How close are they to notifying a change to their regional plans for the NPSFM 2020?
3. How bad a state is their regional freshwater in?

3 main options surfacing

Option 1
Carry on and notify as soon as practicable.

Option 2
Carry on doing some work but wait till the new NPSFM is out to notify.

Option 3
Stop all work and wait till the new NPSFM is start work, notify as late as possible.

What are Marlborough's answers?

1. PMEP is a modern plan with extensive operative water quality and allocation provisions which give effect to NPSFM versions 2014 and 2017.
2. Completed 3 of the 6 NPSFM 2020 steps with Community.
3. Marlborough's freshwater is comparatively good when compared to the rest of NZ.



A Band = Good

E band = Very Bad

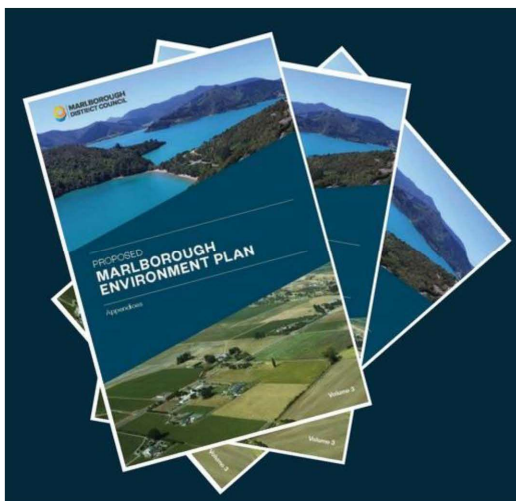


Which option looks good for Marlborough?

Option 2
Carry on doing some work but wait till the new NPSFM is out to notify.

Why?

Proposed Marlborough Environment Plan (PMEP)



PMEP gives effect to many of the requirements of the NPSFM. Notified in 2016 so captured 2014 and 2017 versions.

Also had a water allocation regime for 30+ years in Marlborough.

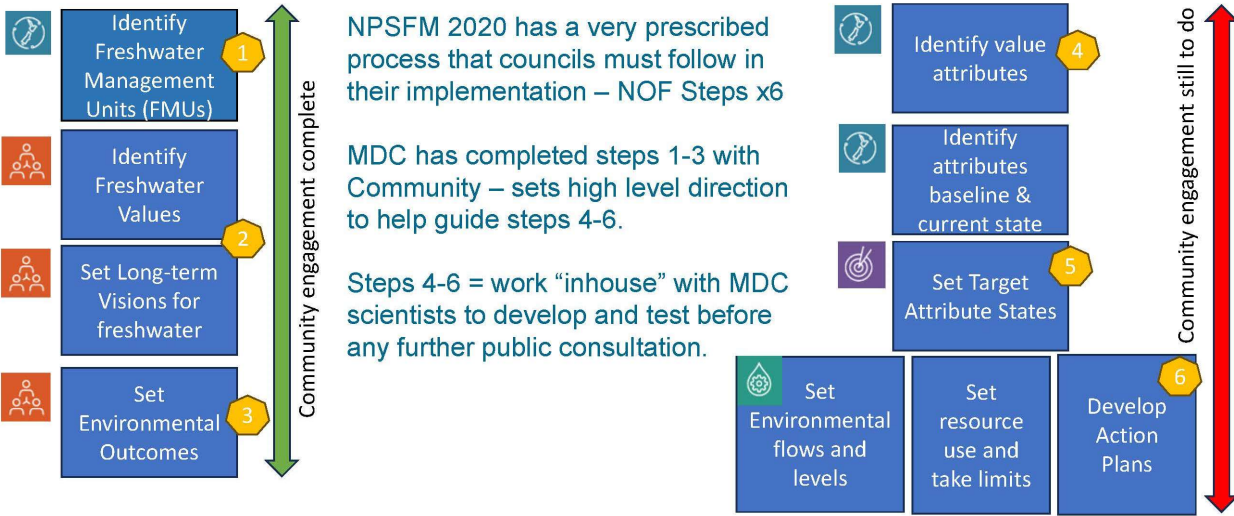
Water provisions (Water Quality and Allocation) became operative in November 2023 (after mediation on resolved all appeals).

PMEP less than 10 years old – New / modern 2nd generation Plan.

So as a region we have some freshwater management certainty that goes a long way to aligning with national direction.

All means we can wait for the new NPSFM before doing a freshwater management plan change.

NPSFM 2020 – National Objectives Framework (NOF) Steps

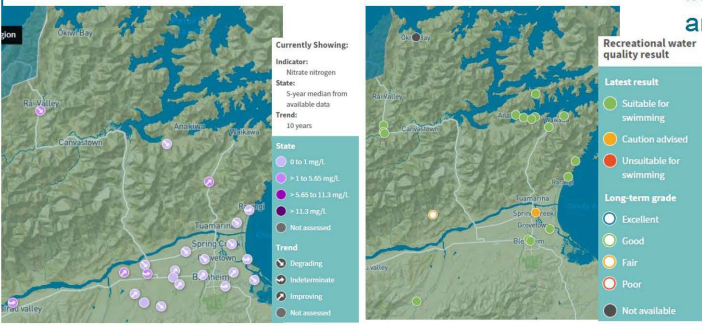


Freshwater situation and Current actions

River Health Monitoring Report 2023

	B	C	D	E	F	G	H	I	J	K	L	M	N	O	P	Q	R	S	T	U	V	W	X	Y	Z		
Periphyton	B	C	D	E	F	G	H	I	J	K	L	M	N	O	P	Q	R	S	T	U	V	W	X	Y	Z		
MCI	B	C	D	E	F	G	H	I	J	K	L	M	N	O	P	Q	R	S	T	U	V	W	X	Y	Z		
ASPM	B	C	D	E	F	G	H	I	J	K	L	M	N	O	P	Q	R	S	T	U	V	W	X	Y	Z		
E. coli	D	E	F	G	H	I	J	K	L	M	N	O	P	Q	R	S	T	U	V	W	X	Y	Z	A	B		
Water Clarity	A	B	C	D	E	F	G	H	I	J	K	L	M	N	O	P	Q	R	S	T	U	V	W	X	Y	Z	
Nitrate	A	B	C	D	E	F	G	H	I	J	K	L	M	N	O	P	Q	R	S	T	U	V	W	X	Y	Z	
Ammonia	A	B	C	D	E	F	G	H	I	J	K	L	M	N	O	P	Q	R	S	T	U	V	W	X	Y	Z	
DIN	C	D	E	F	G	H	I	J	K	L	M	N	O	P	Q	R	S	T	U	V	W	X	Y	Z	A	B	
DRP	B	C	D	E	F	G	H	I	J	K	L	M	N	O	P	Q	R	S	T	U	V	W	X	Y	Z	A	B

- Not widespread degradation.
- Worst are E-coli, MCI and clarity in specific locations.
- PMEP already identifies degraded and at-risk catchments.
- These have active non-regulatory programmes and projects operating to make improvements e.g. catchment care groups and Te Hoiere Restoration project.



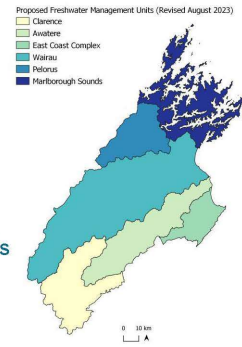
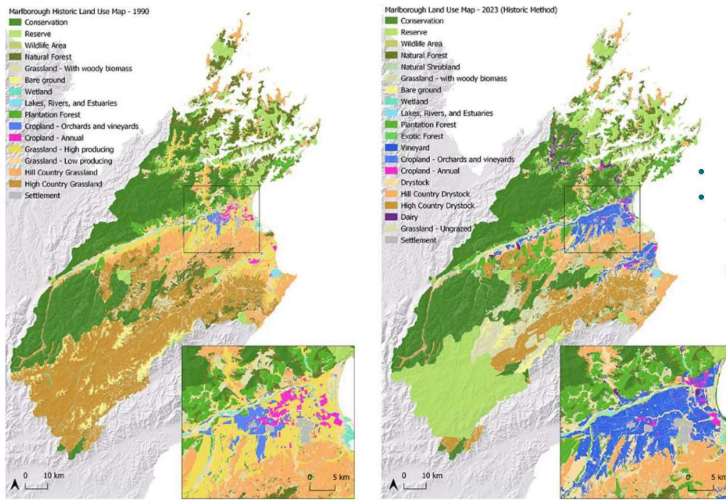
Catchment Care

HAERE, KAKEA TE ARA POKA HOU

Many Voices, One Vision

Working together to improve freshwater, through landscape-scale projects that lead to environmental, social, economic, and cultural benefits for our communities

Our Region and Land Use



- Six proposed FMUs
- Land use reflects the environmental characteristics within each FMU.
- Land use critical to human effects on the freshwater environment.
- 55% of region in DOC estate.
- Lowland areas in Wairau and Awatere dominated by viticulture – protected water quality – i.e. not dominated by nitrates like other regions.

A generation of land use change 1990-2023

What work do we still have to do?

Work Programme Area	2024	2025	2026
Iwi – Understanding Māori freshwater values, visions and environmental outcomes	→	→	
MDC science projects completions	→	→	
Non-regulatory programmes – significant reporting	→	→	
Internal MDC Policy & Science prep work – NOF steps 4-6 taking into consideration Iwi visions and values, new science and non-regulatory programme knowledge. Testing options	→	→	

Wairau Aquifer Project

The Wairau Aquifer is a vital source of water stored naturally under the Wairau Plain and pumped up for use by farmers, growers and our towns supplies. The aquifer is connected to the Wairau River and depends mostly on river flows to keep at a good level.



Scientists study water movement in Pelorus/Te Hoiere

5 Feb 2024, 1:12 pm | Marlborough Matters | News



Summary



Until the release of the new NPSFM in 2026....

1. There will be no more public engagement on the NPFM 2020.
2. There will be no full freshwater management plan change to the PMP.

Work will continue on....

- A) Iwi engagement
- B) Understanding new regional science.
- C) Assessing outcomes of non-regulatory programmes.
- D) Preparatory work supportive of regional freshwater management.
- E) Testing of any required policy change options to further protect Marlborough's freshwater.



Thank you and Questions?

Appendix 2 Community Consultation Timetable and Long Term Plan Media Statement

Long Term Plan - Marlborough Sounds roading funding: community consultation drop-in meetings and webinar

Date	Time	Location	Meeting style
Monday 15 April	5.30pm – 7.30pm	Blenheim Lansdowne Hub 6B Lansdowne Street, Mayfield,	Community drop-in
Tuesday 16 April	2pm – 4pm	Rai Valley The Millers Rest 6767 State Highway 6	Community drop-in
Wednesday 17 April	12.30 pm – 2.30 pm	Waitaria Bay Waitaria Bay Hall	Community drop-in
Thursday 18 April	5.30 pm – 7pm	Online webinar	Via Zoom: https://us06web.zoom.us/j/88384985861
Friday 19 April	12pm – 2pm	Seddon Awatere Memorial Hall 1C Foster Street	Community drop-in
Monday 22 April	2pm – 4pm	Linkwater Linkwater Settlers and Memorial Hall 1351 Queen Charlotte Drive	Community drop-in
Tuesday 23 April	5.30 pm – 7.30 pm	Picton Port Marlborough Pavilion, Endeavour Park Waikawa Road	Community drop-in

Long Term Plan proposal agreed.

Date: 4 Mar 2024
Media Releases

People will soon have the opportunity to have their say on Council's planned expenditure in its ten year plan, which proposes an average rates increase of 12.65 per cent for the 2024/25 financial year.

Mayor Nadine Taylor said it costs about \$180 million a year to run Marlborough and consultation was critical. "We need everyone's input into shaping Marlborough's future and how we get there together," she said.

Councils around the country were facing double digit increases but Marlborough's was at the lower end of the scale.

"We're not alone in facing increased costs due to factors outside our control, such as damaging storms, inflation, contract price increases and the lasting effects of the Covid pandemic," Mayor Taylor said.

"However, we're not proposing to cut services and we're continuing to invest in core infrastructure because we don't want to see Marlborough going backwards."

The Long Term Plan 2024/2034 budget sees new investment in the region's infrastructure, repairs to Marlborough Sounds roads, provides increases in some levels of service and removes the Council's Covid rates subsidy.

At last week's budget meeting councillors approved a number of recommendations to go to public consultation.

Key infrastructure projects include continuing work on the water supply in Awatere, Seddon, Blenheim, Havelock, Picton, Renwick, Riverlands and Wairau Valley, including upgrading pipelines, pump stations and wells to ensure they meet current needs. Drinking water improvements will continue with chlorination to be introduced in Blenheim and a new water treatment plant in Havelock, to ensure water meets national standards.

A new reservoir is planned for Dashwood, new wells are proposed north of Blenheim to increase resilience and supply capacity, and work is ongoing with Picton's water supply, dams and reservoirs.

There will also be investment in sewage treatment plants and pump stations in Blenheim, Riverlands, Picton and Renwick, plus new a sewage treatment plant for Havelock and a major upgrade for Seddon's plant.

Roading is the biggest item of Council expenditure at around 20 per cent, including maintenance, renewals and improvements to roads, footpaths, bridges and drainage. The plan proposes increasing this funding by \$10m over the next three years.

Other key projects include:

- Marlborough Sounds Roothing Funding Recovery - \$234m for repairs, improvements and increased marine access, with \$106m funded by ratepayers over 25 years. Council proposes to pay for repairs to flood damaged roads in the Sounds via a 70/30 split (Marlborough ratepayers paying 70 per cent and Sounds-based ratepayers 30 per cent).
- Spring Creek - \$8.7m for design, repair and upgrade of the stop banks adjacent to Peninsula Road to ensure the safety of the township and transport links during a flood (debt funded)
- Emergency Events Reserve - replenished to its previously agreed level, at an additional \$500k per year over 10 years (rates funded from 2026-27)

- Reducing Council's future reliance on debt by moving to fully fund depreciation on three waters assets by increasing depreciation funding from rates by \$1.75m a year from 2026-27
- Taylor and Ōpaoa rivers sediment removal - additional \$800k over the next two years (rates funded)
- Riverside Park boardwalk, Blenheim - resurface with recycled plastic boards - \$493,600 (reserve funded)
- Public toilets – upgrades at Horton Park, Oliver Park, Pollard Park and Fairhall Cemetery, and build 12 new facilities including at the Taylor River Reserve, Blenheim Mountain Bike Park and Omapa Cemetery - \$1.48m (debt funded)
- A&P Park sports pavilion replacement - additional \$3.7m (funded from reserves and debt)
- Arts, Culture and Creativity Strategy - \$200k over four years to help build a flourishing creative community (rates funded)
- Waitohi Domain, Picton - new ablutions block for truck drivers, and lease termination - \$609k (reserve funded)
- Nautical and Coastal Science - additional funding of \$809k over three years (rates funded)
- Marlborough Events Centre - \$250k operating costs over three years (rates funded)
- Marlborough Museum - additional funding for digitisation and IT upgrades - \$118k in 2024/25 and \$40k per year over 10 years (reserves and rates funded)
- Springlands stormwater upgrade 'Option G' - an additional \$2.7m (rates funded)
- Changes in fees, including for parking in Blenheim.

You can have your say and make a submission from 4 April to 6 May. There will be public meetings and hearings - further information will be made available.

Sounds recovery

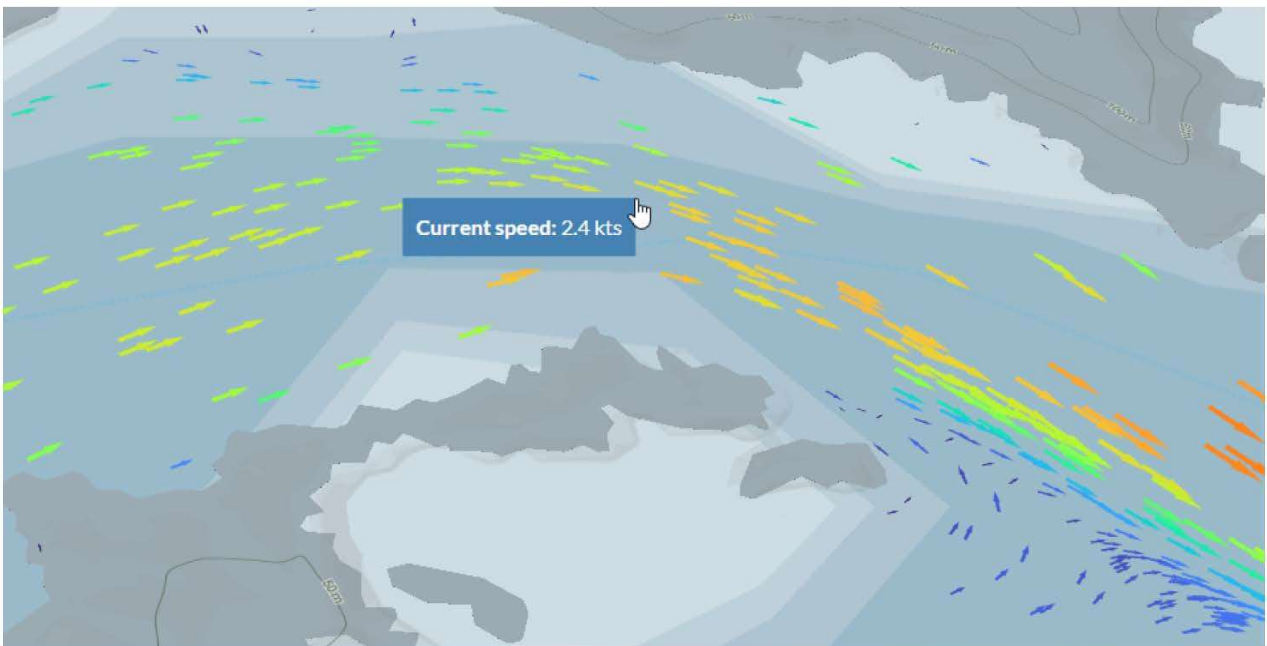
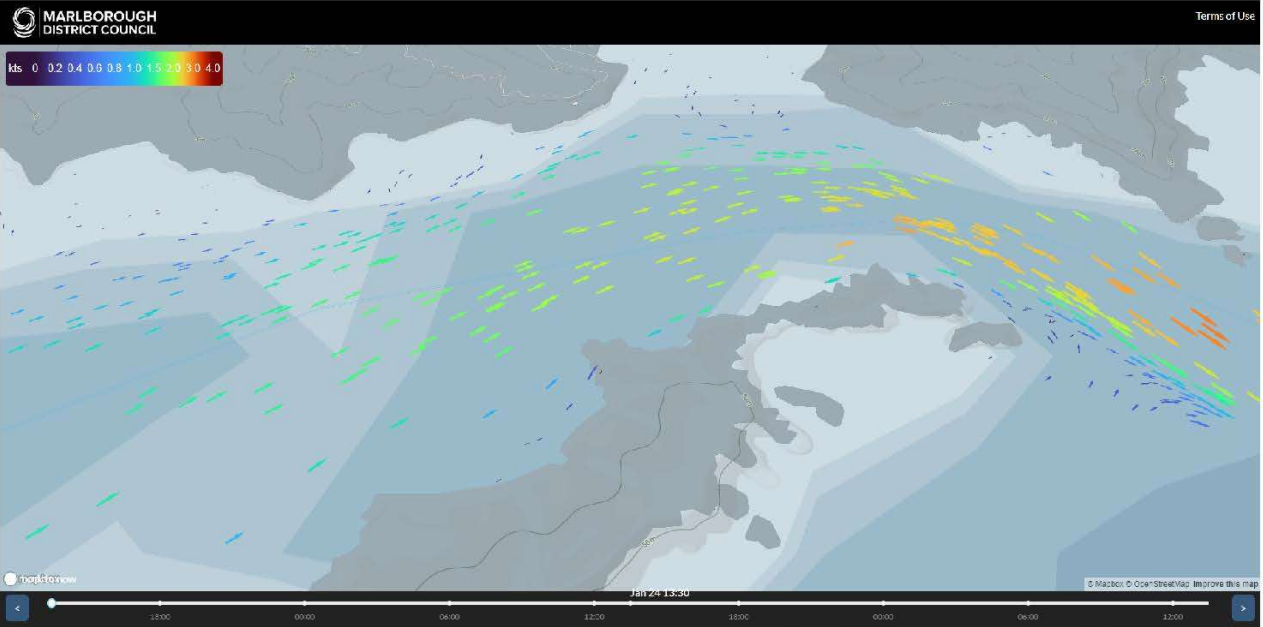
- The most significant decision for this LTP and for our Sounds communities and everyone in Marlborough, is the Sounds roads recovery work, currently costed at \$234 million, and expected to take about 20 years to complete.
- Of that \$234m, \$106m is to be covered by ratepayers, although that can still change.
- The New Zealand Transport Agency Waka Kotahi (NZTA) board had signalled it would pay 71 percent of the cost of repairs, and 51 percent of road improvements, subject to further detailed design work, after they considered our draft Programme Business Case prepared by engineering company Stantec in December.
- At the LTP Budget meeting on 26 February, five options were confirmed for consultation.
- The first four were: 1) do nothing, which meant NZTA would not release the funding; 2) Split the cost across all of Marlborough evenly; 3) Split the cost across the Sounds (excluding Picton and Havelock); 4) Or split the cost across different zones within the Sounds.
- Council's preferred option was to split the cost across different zones within the Sounds, and the rest of Marlborough would also contribute, although at a lesser rate per household – via a UAC rather than a land value rating.
- Under that option, the zones would be defined as they were in Stantec's business case for the work.
 - French Pass (896 properties) Total cost to fix: **\$52.84m**
 - \$67.80 in 2025-26; \$524.38 by 2034
 - Pelorus (162 properties) Total cost to fix **\$6.27m**
 - \$34.80 in 2025-26; \$331.26 by 2034

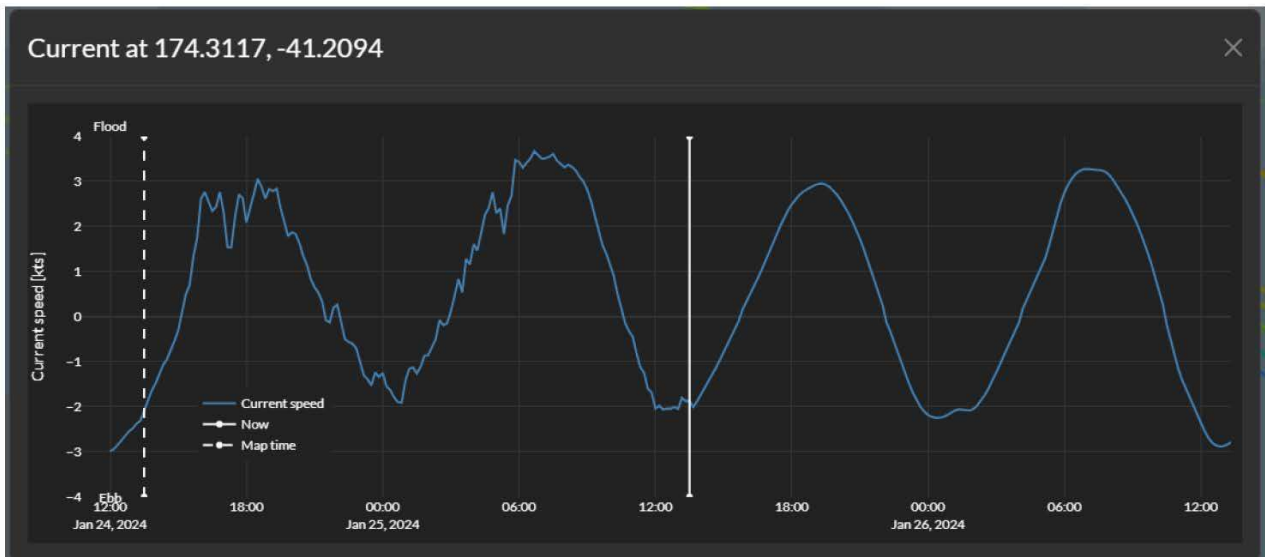
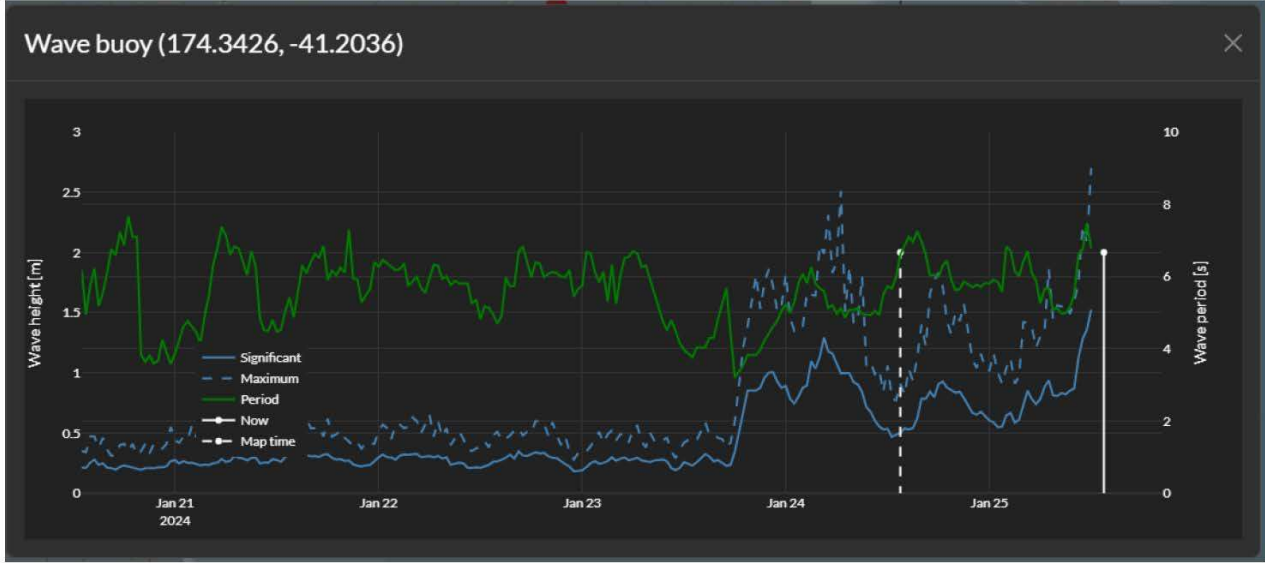
- Queen Charlotte (712 properties) **Total cost to fix \$27.63m**
 - \$45.43 in 2025-26; \$346.10 by 2034
 - Kenepuru (930 properties) **Total cost to fix \$128.48m**
 - \$206.67 in 2025-26; \$1291.24 by 2034
 - Port Underwood (339 properties) **Total cost to fix \$19.53m**
 - \$72.16 in 2025-26; \$520.12 by 2034
 - Sounds Rural with no road access (1451 properties)
 - \$22.53 in 2025-26; \$153.35 by 2034
 - Non-Sounds – Rest of Marlborough (22,297 properties)
 - \$38.07 in 2025-26; \$259.15 by 2034
- Kenepuru, in the Marlborough Sounds, has the largest repair build and is by far the most expensive road to fix at a total cost to fix of \$128.48m (compared to the cheapest road – Pelorus at \$6.27m).
 - Kenepuru ratepayers would pay more each year compared to other Marlborough Sounds zones and the rest of Marlborough (starting at \$206 - \$1291.24, compared to Pelorus starting at \$34.80 - \$331.26 & Non-Sounds starting at \$38.07 – \$259.15)
 - As part of the consultation, we will be holding public meetings and inviting submissions from residents, ratepayers and interested parties from right across Marlborough and beyond.
 - The final rating decisions will follow the consultation process and won't be made until June this year.
 - Then we can get on with the job of fixing the Sounds' roads.

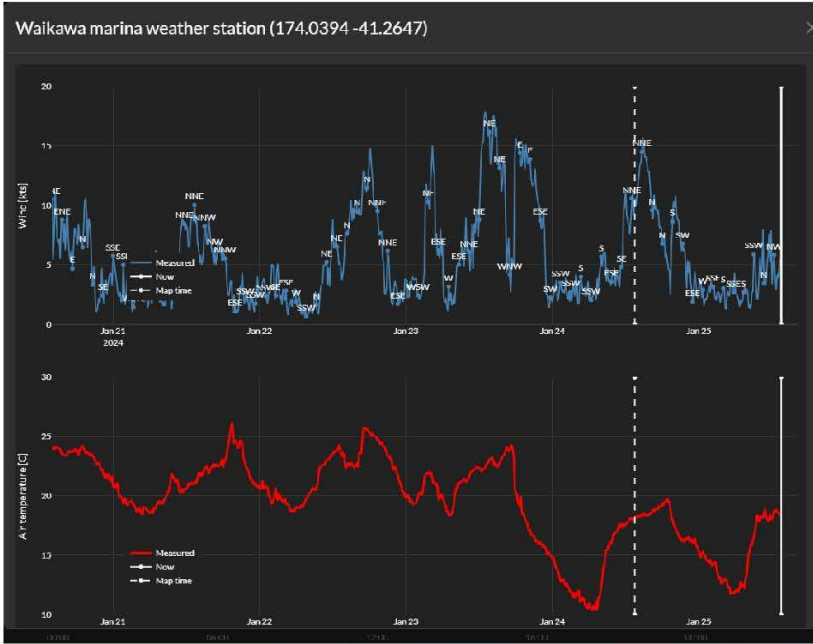
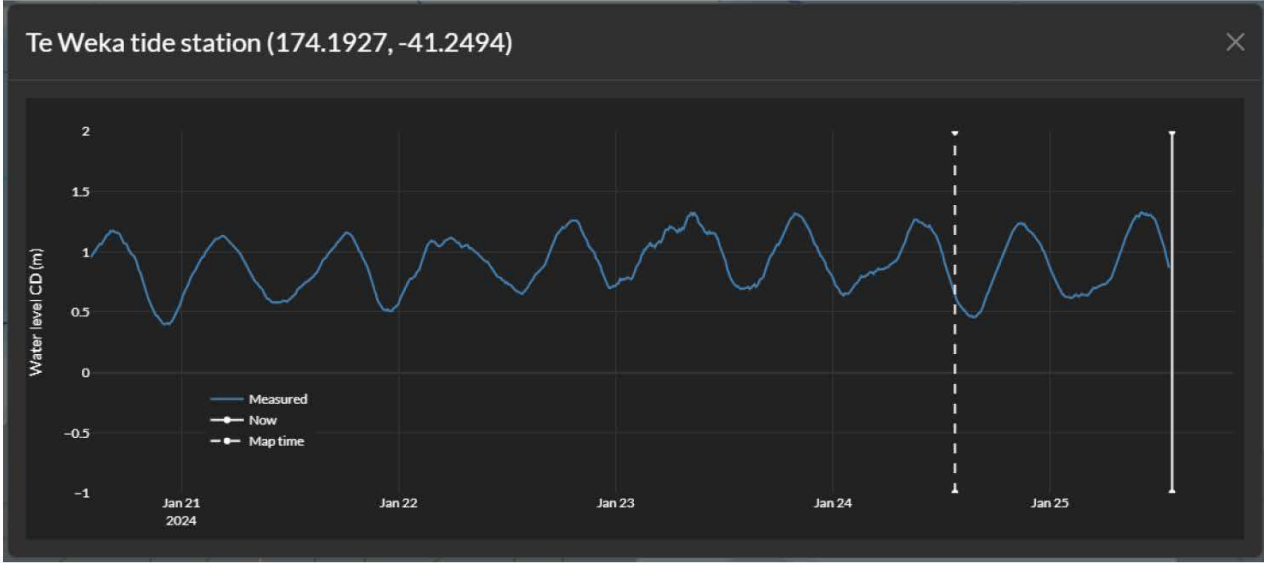


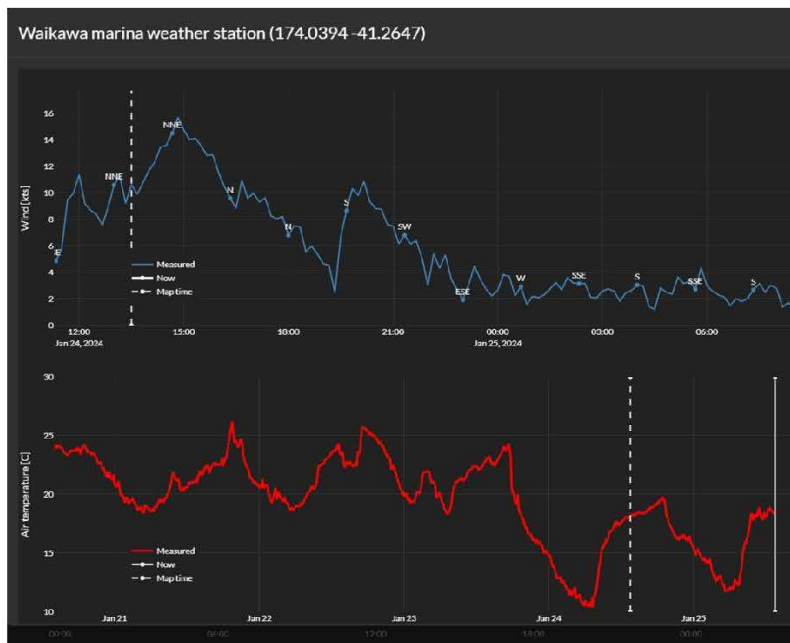
Tory Channel Tide and Current Project

➤ www.oceanum.io









Next Steps?

- We intend to publish the visualisation through the MDC website and with Oceanum.
- This will make the information freely available to all users, commercial and recreational.
- We will begin looking at the feasibility of expanding the project to encompass the whole of Queen Charlotte Sound.