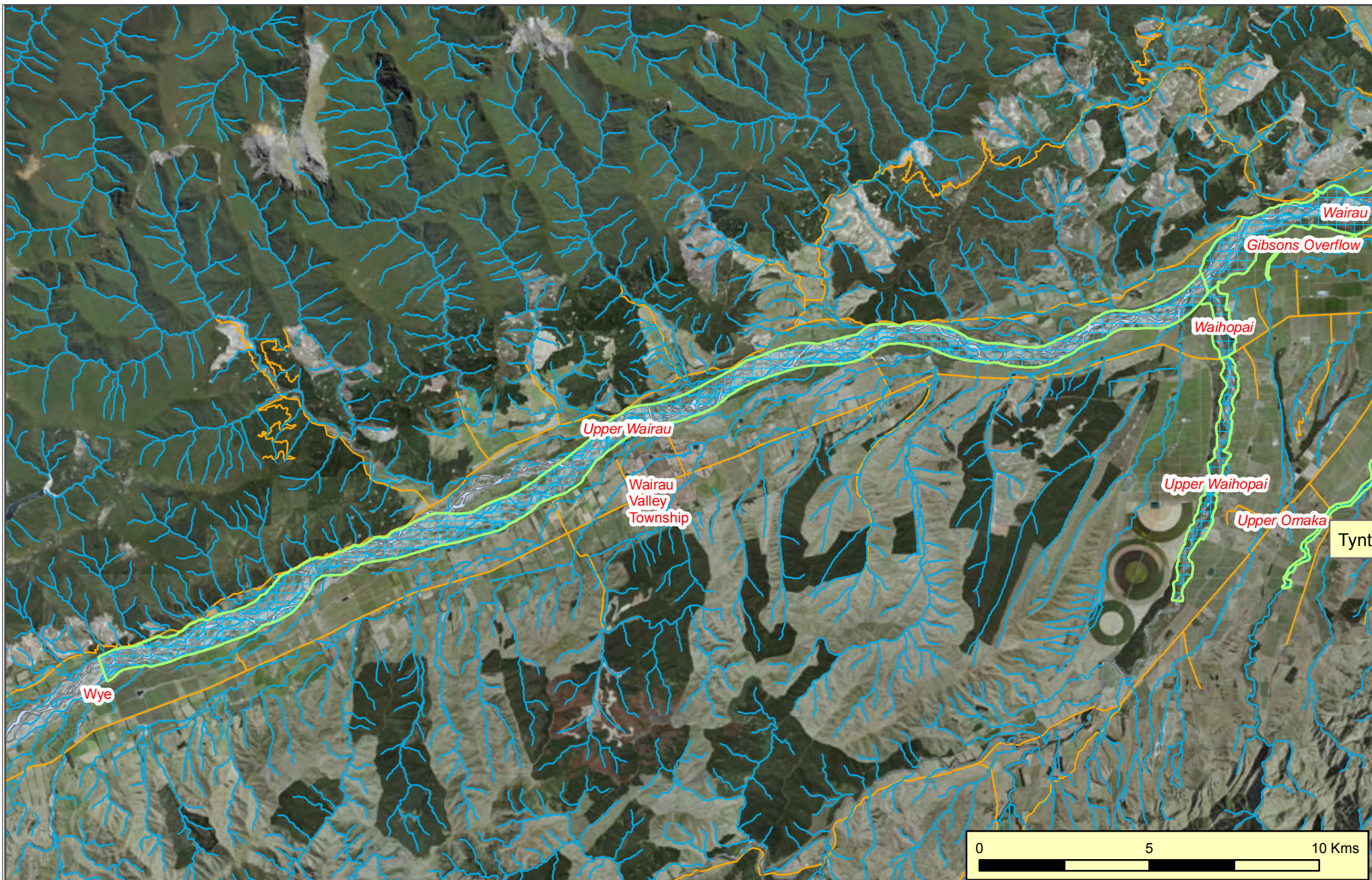


The accompanying material has been released by Council from its information repositories. Council does not accept any responsibility for the initial and ongoing accuracy to the material. It is the responsibility of the recipient to ensure accuracy. Services layers are schematic only and actual positions and level should be confirmed from Council's hard copy records.

Marlborough Floodway Zones



The accompanying material has been released by Council from its information repositories. Council does not accept any responsibility for the initial and ongoing accuracy to the material. It is the responsibility of the recipient to make such checks as the recipient considers appropriate to ensure accuracy. Services layers are schematic only and actual positions and level should be confirmed from Council's hard copy records.

1:150,000

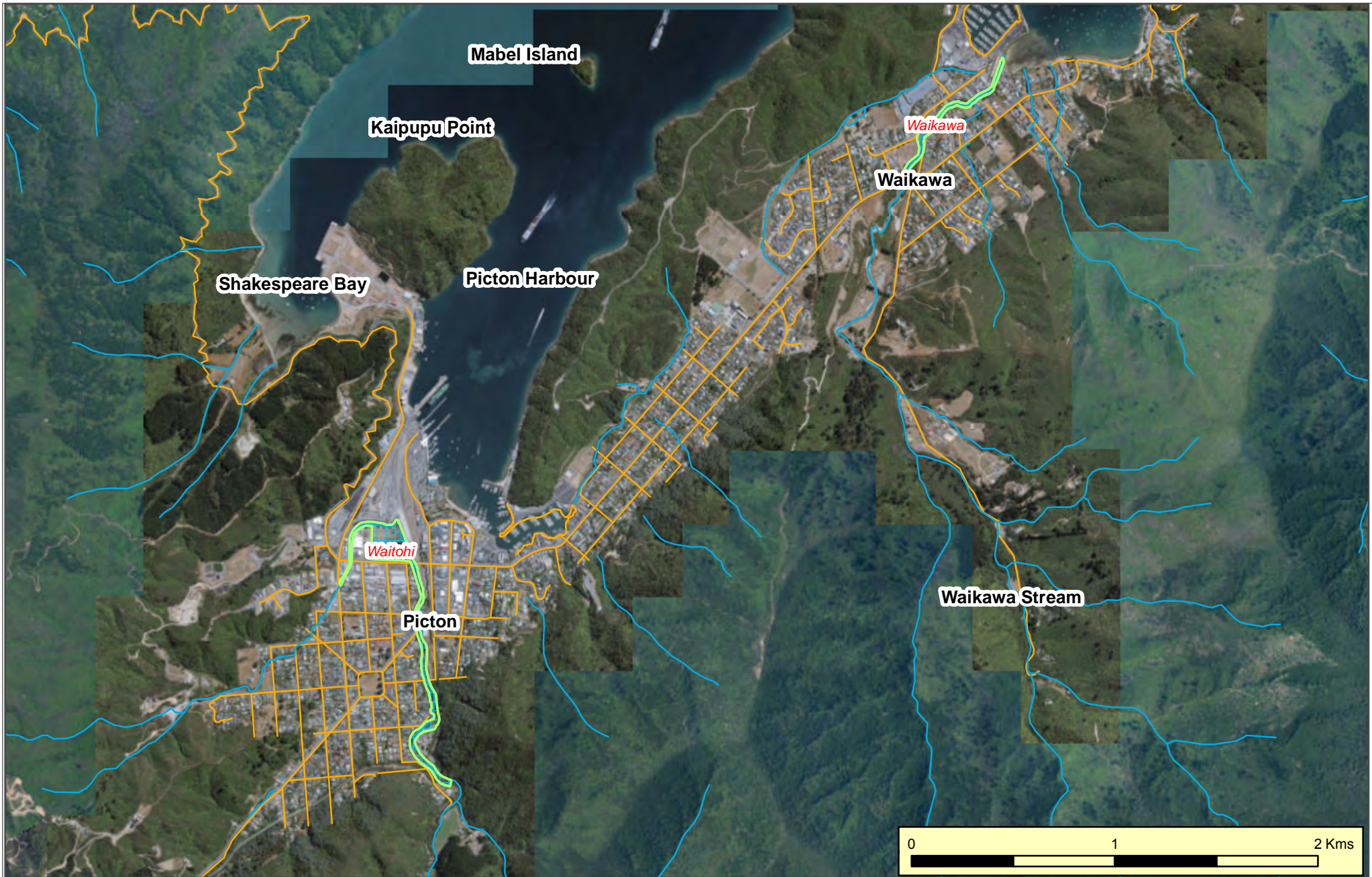
Marlborough Floodway Zones

2



Printed By: kmc2@ NC5105 Date: 22/12/2016

File Name: S:\Kmc2\ARCGIS_Kmc2\Projects\02 LIVE EDITS\RMP Flood Way Zones\Floodway Zones2.mxd



The accompanying material has been released by Council from its information repositories. Council does not accept any responsibility for the initial and ongoing accuracy to the material. It is the responsibility of the recipient to make such checks as the recipient considers appropriate to ensure accuracy. Services layers are schematic only and actual positions and level should be confirmed from Council's hard copy records.

1:25,000

Marlborough Floodway Zones

3



Printed By: kmc2@ NC5105 Date: 22/12/2016

File Name: S:\Kmc2\ARCGIS_Kmc2\Projects\02 LIVE EDITS\SRMP Flood Way Zones\Floodway Zones2.mxd