



# PICTON HAPPENINGS

Free Newsletter

06 September 2023

**09** **CKNZ Save Our Species Programme, 1.00pm - 3.00pm Sat 9 September**

Ever wondered what they do at a CKNZ event? They will be offering several activities, games and crafts sampling their various events from this year so far. See page 13 for more information.

**13** **Coastguard AGM 7.30pm Wed 13 September**

The 2023 Coastguard AGM will take place at the Ogilvie Lee Emergency Operations Centre. See page 11 for more information.

**15** **Evolutions Sails Regatta, Fri 15 - Sun 17 September**

Waikawa biggest sailing event. Racing Saturday and Sunday with good viewing from Karaka Point,, Port Underwood Rd. See page 15.

**16** **Queen Charlotte Relay, 8.45am Sat 16 September**

This relay is one of the oldest road relays held in New Zealand and still running on a State Highway. For more information visit [www.harriers.net.nz](http://www.harriers.net.nz).

**16** **Pirate Month, 6.00pm - 8.00pm Sat 16 September**

Join us to celebrate pirate month - come dressed as a pirate, talk like a pirate and enjoy sea shanties by the sea - arrrrgh! Rum theme: enjoy a glass of rum with us, cash bar, food available to purchase. Pirate and shipwreck pop-up displays. No tickets required, R18 event, licensed bar (no BYO).

**17** **PDC Community Planting Day, 9.30am - 12.30pm Sun 17 September**

To support our flourishing birdlife PDC has established a Ngahere Tree Planting group with the aim of planting a variety of native flora in the Picton Waitohi rohe. See page 6 for more information.

**17** **Picton Spring Clean, 10.45am Sun 17 September**

Join Envirohub Marlborough and Waikawa Dive Centre for the annual Picton Spring Clean. See page 17 for more information.

**20** **A Cuppa With Your Councillors, 10.00am - 12.00pm Wed 20 September**

See page 21 for more information.

**29** **Fiona Pears Trio, 7.30pm - 8.30pm Fri 29 September**

Picton Little Theatre presents Fiona Pears Trio, offering a gypsy jazz extravaganza featuring classic tunes and original compositions with unique and exciting flair. See page 5 for more information.

**30** **Marina 2 Marina, 7.30am - 1.00pm Sat 30 September**

Marina 2 Marina is a scenic annual running event in the heart of the Marlborough Sounds. This unique competition utilises the picturesque trails between Picton, Waikawa and Anakiwa and raised funds for the community. See page 7 for more information.

## NEXT ISSUE

Publication date: 4 Oct 2023  
Copy deadline: 5pm 27 Sep 2023

**SUBSCRIPTION:** The Picton Happenings is a FREE monthly newsletter circulated via email. To subscribe please send an email.

**CONTENT:** Are you a community group who would like to promote your activities or have a story to tell? Then please get in touch.

 03 520 7400

 [nicola.neilson@marlborough.govt.nz](mailto:nicola.neilson@marlborough.govt.nz)



# Become a Nature's Champion and win!

## Picton Dawn Chorus



**Picton Dawn Chorus**  
Restoring our native birdlife together.

### He toki a Tāne - Nature's Champion Winners Round 2 2023

By Jen Dunlop

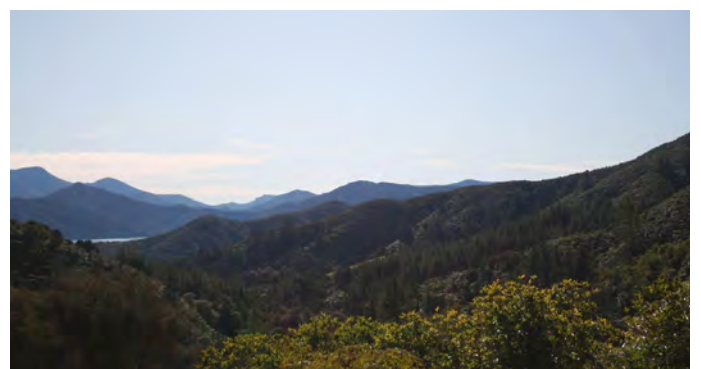
#### **Congratulations to Nigel Muir & Mish Clark, 2023 round two Nature's Champions.**

"Nigel and Mish are doing the most incredible job for nature in Picton. They are trapping pests and propagating native plants but above all they are sharing their passion and energy with the community. .... " as stated by Siobain Finlow-Bates in her nomination, and whilst driving up to the property I can see why Siobain feels this way. It really does feel like a sanctuary where peace and positive energy just surrounds you. The amount of mahi that has gone into this property is just astounding.

The couple moved to their home at the back of Waikawa 3 years ago. "The beauty of this place originally called us towards adventure and sanctuary, however as we explored this 200Ha of special whenua, we heard silent forests, saw dead giant snails, and noticed an absence of native tree succession. We immediately moved into conservation and have become large scale backyard guardians. Our 400-year mission is to recreate an ancient, natural, wonderland that our ancestors used to know, including a safe wildlife corridor from Te Maunga o Piripiri, the sacred mountain of mana whenua in this area,

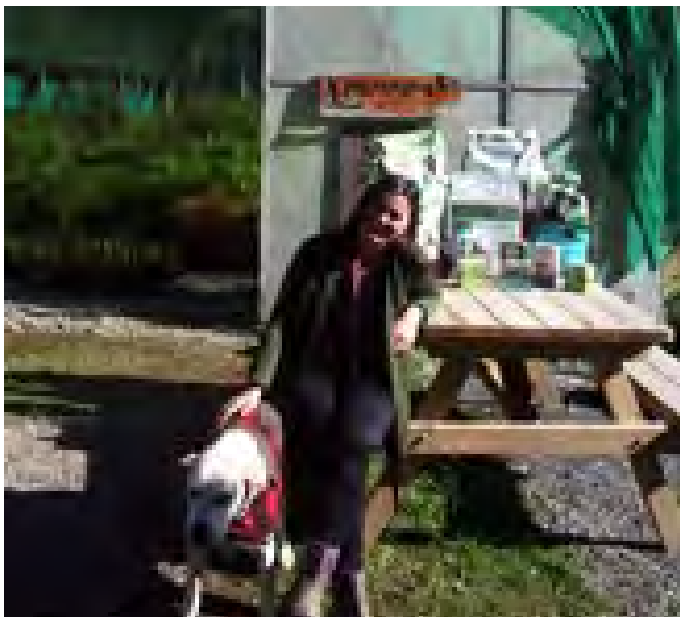
Te Ātiawa o te Waka-a-Maui and the sea.

Our close working relationship with Te Ātiawa Iwi, Waikawa Marae, PDC, Kaipupu Sanctuary, MDC & DOC (& more) is incredibly important to encourage this vision. We first met PDC at the Picton Environment Centre picking up our free trap as part of the 7220 initiative. Then within a week of moving here, Siobain Finlow-Bates and Dianne John from PDC (at the time) came up for a visit, with Dianne commenting on how silent it was sitting on our deck (July 2020). This inspired Nige to start monthly birdsong recordings and bird counts. Last August members of PDC (including Lee & Bryn) were part of a large family, friend and community volunteer day where we distributed 100 traps into steep sections of the property.



On the trapping side, Nige now runs 520 traps, and has trained a goat indicator dog Ash. With three years of time and 1500 less predators, we've seen bird species rise, birdsong triple, insect levels rise, thousands of new seedlings emerge, and ancient native trees are sprouting from their trunks again. We regularly discover new small creatures including the nationally vulnerable Wainuia Nasuta (little black snail). As well as regular crew Tūi, Korimako, Ruru and Tauhou, other bird species include Kārearea, Titipounamu/Rifleman, Miromiro/Tomtit, Kōtare, Long-tailed Cuckoo and Shining Cuckoo and Pīpipī/Brown creeper. This gives us hope and motivation, especially as birds move through the wildlife corridor to safe places like Kaipupu Sanctuary. The continued need to protect is high.

On the planting side, Mish started collecting native seed early. We've now planted 5000 biodiverse eco-sourced ground covers, shrubs and trees chosen for all creatures - birds, insects, lizards on land and water. Their role to provide will come in time, as they grow and age, providing food and habitat for future generations.



On our guardianship journey, we have been blessed to meet so many like-minded people in our community encouraging us, and certainly the Marlborough District Council have been huge nature champions for Wild Waikawa. We are also encouraged by local and international volunteers who find their way to us because they are inspired by our vision to protect this special place. PDC's very own Jack, was originally a volunteer here. Every action and

person makes a difference!

We'd like to thank Siobain Finlow-Bates for nominating us, and Picton Dawn Chorus and Dalton's for providing us with your amazing



gift! After Jen dropped off our goodies, we got into action and gave some Dalton's love of manure, compost and bark to our neglected herb, fruit trees & veggie garden. Thanks so much!"

You are welcome to contact Mish on 0277717285 or Nige 027 546 3301 or visit their facebook page for conservation updates <https://www.facebook.com/groups/wildwaikawa> or watch video from this years Cawthron Marlborough Environmental Awards <https://www.cmea.org.nz/copy-of-2023-entrant-business-innovation>

Dalton's products can be found at Picton ITM and Bunnings, Blenheim. Please support our fantastic sponsor.

[For nominations click here.](#)

# Picton Spring Clean

# RAFFLE



**BE IN TO WIN!!**  
**Tickets \$5 or 5 for \$20!**

## Prize 1:

Family-friendly, 3-4 hour cruise through the Queen Charlotte Sound to "Explore the KOI" a hidden wreck in the Sounds!

Valued at \$600+

Take up to 8 passengers thanks to Waikawa Dive Centre (don't worry, you won't get wet, so suitable for all ages!).



## Prize 2:

**\$500 Interislander Ferry Voucher!**

Valued at \$500 - Thanks to Interislander

## Prize 3:

**Annual Marlborough Launching Ticket**

Valued at \$295 - Thanks to Marlborough Sounds Marinas



## Prize 4:

**Return trip to Kaipupu Sanctuary for 4!**

Valued at \$80 - Thanks to Beachcomber Cruises



## Prize 5:

**Half day Sea Kayak Rental for 2!**

Valued at \$80 - Thanks to Wilderness Guides



# ENTER NOW!

There are a few ways you can enter:

1. Drop us a line at [info@envirohub.co.nz](mailto:info@envirohub.co.nz) and tell us how many tickets you would like
2. DM us on Facebook/Instagram @envirohubmarlborough
3. Drop in to the Picton Environment Centre (14 Auckland St) Mon-Fri 9am-3pm!

## Prize 6:

**\$50 Mystery Box of earth-friendly goodies from Envirohub Marlborough!**



# Picton Little Theatre



## Fiona Pears Trio

**Friday 29 September 7:30pm - 8.30pm.**  
**Tickets: [Eventfinda](#) \$30 + fees / Cash sales at Summit Real Estate Picton / \$35 door sales (if any available).**

Experience the mesmerizing sounds of The Fiona Pears Trio as they take the stage for a spellbinding performance.

Led by the virtuoso violinist Fiona Pears, accompanied by pianist Dan Robertson and guitarist Connor Hartley-Hall, this gypsy jazz trio is sure to delight. With their masterful playing and captivating energy, The Fiona Pears Trio will take you on a musical journey, performing both classic tunes and original compositions with a unique and exciting twist.

Don't miss your chance to witness this unforgettable performance by one of the most talented ensembles in the music scene today!

## Coming soon...

### 26 November - Whirimako Black

Whirimako Black is Aotearoa's undisputed soul diva. With melodies caressed into shape by the language of her ancestors, Whirimako has carved out a musical pathway leading from the mists of the Urewera to the world. She is

joined on stage by the multi-instrumentalist Kim Halliday who perfectly complements her with her virtuosity, and Mahina Kauī's out of this world Taonga Puoro sounds and vocals. Whirimako Black, with special guests, Kim Halliday and Mahina Kauī

Bookings coming soon.

## Picton Movie Viewing Group

Picton Little Theatre committee is planning to host a movie viewing group.

We have a great projector, large screen, and good sound system, along with efficient heating and a tidy kitchen.

We are keen to explore possibilities for a Movie Viewing Group and would love to hear your ideas.

If you have an interest in film/movies, and could be keen to help get this project up and running, or just to attend, please ring Val on 027 573 6442 or email [pictonlittletheatre1@gmail.com](mailto:pictonlittletheatre1@gmail.com)



**Picton Dawn Chorus**  
*Restoring our native birdlife together.*



## Community Planting Day

As you may already know Picton Dawn Chorus have been hard at work restoring the native birdlife within Picton Waitohi and providing a halo of protection to Kaipupu Sanctuary.

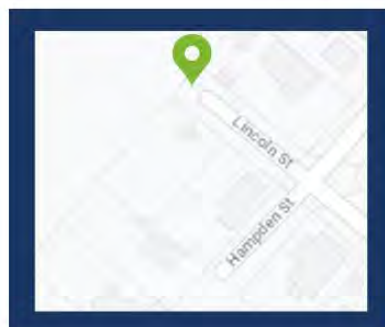
To support the flourishing birdlife we have formed a new working group - **Ngahere Tree Planting**, with the aim of planting native flora species to provide a year round food source and to enhance and protect our environment.

**Our first significant tree planting is happening on**

**Sunday 17th  
September**

**Please register via email**

to [administration@pictondawnchorus.nz](mailto:administration@pictondawnchorus.nz) with your name and contact number. If are unable to attend this time but would be interested in helping the group in the future please get in touch.



**Where:** Meeting at the lower end of Lincoln Street

**Time:** 9:30am

**Bring:** Gardening gloves, water, sturdy shoes

If the weather is not favourable we will email you or visit [facebook.com/PictonDawnChorus](https://www.facebook.com/PictonDawnChorus) for cancellation information.

**[www.pictondawnchorus.nz](http://www.pictondawnchorus.nz)**

**14 Auckland Street**

**03 928 4957**



# Marina 2 Marina

## Marlborough's most scenic running event returns for its 10th anniversary



The highly anticipated Marina 2 Marina brought to you by Marlborough Sounds Marinas, annual running event is set to make a triumphant comeback for its momentous tenth anniversary on Saturday, 30th September. After several years of challenges, the event is set to offer an unforgettable experience, featuring the return of the 24km run, an extended 10km race, and a brand-new turn around point at Waikawa Marina.

Marina 2 Marina has been a highlight on Picton's calendar for a decade, attracting enthusiasts and nature lovers from all corners of the country. This year's event promises to be better than ever, showcasing the stunning beauty of the Marlborough Sounds with its picturesque walking tracks right on our doorstep.

Competitors will have the opportunity to traverse through native bush and along mesmerizing waterfront trails, offering

panoramic views that are simply breathtaking.

As they reach the finish line, a vibrant festival atmosphere at the event hub on Picton Foreshore will welcome them home, making the experience even more memorable.

Adding to the excitement of this milestone year, the 24km run is making a much-awaited comeback after being cancelled last year due to track flood damage. Additionally, the 9km race has been extended to 10km to celebrate the opening of the Waikawa Marina extension. With various walking and running options available, Marina 2 Marina caters to individuals of all fitness levels, ensuring everyone can be a part of this remarkable event.

This year, the Urban Fare Wairau Corporate Competition brings a new dimension to the event. Businesses are invited to join in the excitement by registering their staff for any of the race options. The business that garners the highest number of entries will be rewarded with

a delicious \$100 work shout. Port Marlborough has set the bar high by challenging others to surpass their own impressive number of entries. Let the corporate rivalry begin!

Since its inception, Marina 2 Marina has been deeply committed to giving back to the local community. This year's event will continue this tradition, with funds raised benefiting a selection of worthy groups, including Picton Dawn Chorus, Envirohub Marlborough, Picton Trails, Marlborough Girls College Rowing Club, and Simply the Breast Dragon Boat Team.

Marina 2 Marina also takes pride in its commitment to environmental sustainability. As a Zero-Waste event, organizers are partnering with Envirohub Marlborough, who will be on-site ensuring that the event is eco-friendly and free from disposable plastic.

Join us for the tenth anniversary of Marina 2 Marina on Saturday, 30th September, and be a part of a spectacular journey through the captivating Marlborough Sounds. For more information and to secure your spot, visit [www.marina2marina.co.nz](http://www.marina2marina.co.nz)



## Race Options

### Wilderness Guides Marlborough Sounds 24km Link Run

The Link is not for the faint hearted! Starting at Anakiwa Bay (beginning of the Queen Charlotte Track) the track takes runners through 24km of native bush on the newly built Link Pathway. Passing through Aussie Bay, Momorangi Bay, Ngakuta Bay and Shakespeare Bay before travelling down into the town of Picton. Just over the length of a half marathon and with hills to challenge the fittest of competitors, this event is for the experienced

runner.

The Link also provides competitors with the option of enjoying a boat cruise from the main event at London Quay, Picton to the start line at Anakiwa. Alternatively, they can make their own way to Anakiwa and meet their fellow runners at the start line.

### Tall Poppy Picton and Marlborough Sounds Snout Run/Walk 13km



Competitors must be 14 years or older. The Snout 13km course includes a few hard hill climbs but when you reach the top, the views are amazing. This would be suited for the fitness enthusiast and regular joggers. We offer both walking and running options.

### Oxley's Bar and Kitchen M2M 10km Run/Walk

Competitors must be 7 years or older. This course follows the Picton to Waikawa track and is an easy trail for novice runners and with the option to walk, makes it suitable for all members of the family.

### Picton Lions Kids Dash 2km

Children aged 5 - 9 years can enter this event which is a short 2km around Picton Marina.

[www.marina2marina.co.nz](http://www.marina2marina.co.nz)





Picton Dawn Chorus

# WIN!

Bait, set, check & win...

## ...a trip for 2 to Motuara Island

Do you have a trap in your garden?

submit your catch data for a chance to win a monthly spot prize and an entry into the grand prize draw.



**VISIT OUR WEBSITE FOR MORE DETAILS**

[www.pictondawnchorus.nz](http://www.pictondawnchorus.nz)

traps can be purchased from our shop at 14 Auckland Street

sponsored by

**Cougar Line**



# WIN \$200

WORTH OF SPORTS EQUIPMENT FOR YOUR SCHOOL

## SATURDAY 30 SEPTEMBER 2023

Enter Marina 2 Marina 2023 and your school could win \$200 worth of sports equipment sponsored by Summit Real Estate Picton. Simply name your school on the entry form when prompted. The school with the most entries wins.



T&C's: To be included in the competition registrations must be received online by 5pm 28 September 2023. Entrants must be 18 or under and a school student.

**SUMMIT**

[www.summit.co.nz/real-estate/picton](http://www.summit.co.nz/real-estate/picton)

[WWW.MARINA2MARINA.CO.NZ](http://WWW.MARINA2MARINA.CO.NZ)



# 30 SEPTEMBER 2023

## MARLBOROUGH'S MOST SCENIC RUNNING EVENT

*Celebrating 10 years*



The Link Run 24km | The Snout Run/Walk 13km | Marina 2 Marina Run/Walk 10km | Kids Dash 2km

[WWW.MARINA2MARINA.CO.NZ](http://WWW.MARINA2MARINA.CO.NZ)



# iReX Project

## Progress continues on the Interislander ferry terminal redevelopment

By Diane Livingston

Downer HEB JV, the main works contractor for the project, has set up a lay-down area on Waitohi Domain for construction material, and will soon be building a temporary jetty at Westshore (on the Bluebridge berth side of the harbour, in the restricted Port Zone) which they'll use later to transfer materials to and from the main wharf construction site.

We hope our work around Dublin Street over the weekend didn't create too much disruption – we had to get in underneath the railway lines to relocate pipes, and did it overnight so that we could get the work done quickly. Thanks so much for your patience. We plan to get started on constructing the new overbridge in October.

We also have crew busy relocating the rental car kiosks to the lower carpark behind Edwin Fox Museum, and are working on installing new driveway access for residents near the Dublin and Auckland Street intersection.

### Staying up to date with works

Marlborough District Council has a great app called Antenno that sends out alerts about shutdowns, sports ground closures, sewer outages, local road closures and even changes to waste and recycling collections.

Free to install, Antenno is available on Apple and Android smartphones and no personal information or login details are required. You simply save the locations you want to be informed about, such as your home address, workplace, or school.

When Council posts an update relevant to your chosen locations, you receive a notification. We will be using Antenno wherever possible for roading updates for the ferry terminal development project.



**Above: Left to right - Scott Vallely, project manager for the Downer HEB JV in Waitohi Picton, with Johnny and Alex from Central Fitness Gym.**

To learn more about Antenno including how to download the app visit: [www.marlborough.govt.nz/services/apps](http://www.marlborough.govt.nz/services/apps)

### Construction talk over a cuppa

There was a nice buzz and aroma of good coffee at Seabreeze café last week, where 20 or so people dropped in to chat about work planned for the Dublin Street overbridge.

“People are pretty interested in the project and what it means for their town,” says Downer HEB JV Communications & Engagement Senior Advisor Jane Davison. “It was a great way to talk about the work we'll be doing when things get into full swing next year,” Jane said.

There will be a series of drop in sessions happening in coming months for anyone keen to learn more, and you can check out what's happening with the new ferries and terminals at [www.irex.co.nz](http://www.irex.co.nz)

# Marlborough



follow-me.co.nz



Pick up your copy from Marlborough District Council



# THE CHAT ROOM

CAFE FOR PARENTS AND CAREGIVERS

KIDS WELCOME

TIME: 930AM-1130AM  
2ND AND 4TH THURSDAY OF THE MONTH

IN THE HALL NEXT TO HOLY TRINITY ANGLICAN CHURCH, WAIRAU ROAD

More info contact Stephanie Moore  
022 199 4954



## Notice of Annual General Meeting

The 2023 AGM is scheduled for  
Wednesday 13 September 2023  
at 7.30pm in the

Ogilvie Lee Emergency  
Operations Centre, Picton

For more information contact

[office@coastguardmarlborough.org.nz](mailto:office@coastguardmarlborough.org.nz)

or Lisa 021 703 338

## Volunteer Available: Fishing Buddy

Do you need a fishing partner. I am a 77 year old retired active male and live in Wairau Valley. I recently sold my own boat but would like to offer help to anyone requiring a boat buddy.



Contact Jack - T: 03 572 2827  
E: maurjack@xtra.co.nz

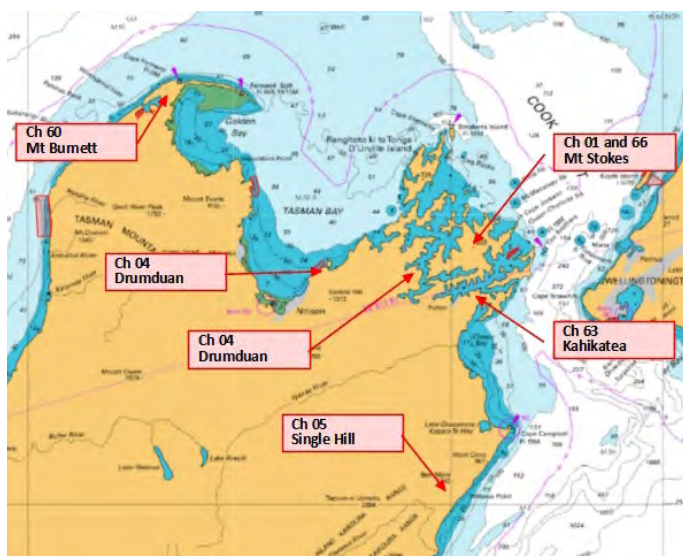
# Marlborough Nelson Marine Radio

## New members welcome

By Michael Blank

Marlborough-Nelson Marine Radio Association provides a monitored marine communication system in the wider Marlborough Sounds, Cook Strait, Tasman and Golden Bays.

Our purpose is to provide safety to our boating members through the provision of a VHF marine radio network. The channels that form the network are privately owned by the Marlborough-Nelson Marine Radio Association. The provision of this network, and its maintenance is funded through member's annual subscriptions and various sponsorship arrangements. Callouts to maintain our network can be expensive and can involve helicopters for access to the remote sites!



Our channels are monitored from 0700 to 2200 daily by a team of highly dedicated operators. These operators will log your trip reports, recording your vessel name, radio callsign, point of departure and destination, number of people on board and your ETA at your destination. If you don't cancel your trip report at the ETA, the operator will follow up to ensure there are no issues.

Weather forecasts are also transmitted four times daily.

If you have ever tuned in to listen to the weather broadcast, or called one of the popular Lodges around the Sounds to book

a mooring, on one of the MNMRA repeater channels you have been utilising the services provided by our Association.

If you are not currently a Member, please consider joining the Association, click on this link to take you to the Join Marlborough-Nelson Radio tab on our website - <http://www.mmr.org.nz/index.php/become-a-member>



**Nelson Marlborough Marine Radio Association**  
**Unit 4, 19 Te Ara Kaimoana, Waikawa Marina**  
**Ph: 03 573 8851**  
**E: [marineradio@xtra.co.nz](mailto:marineradio@xtra.co.nz)**

Conservation Kids NZ **Save Our Species Programme** **TASTER DAY!**

As a part of this year's **Welcoming Communities Week** CKNZ are holding a 'Taster' Day!



Ever wondered what we do at a CKNZ event? We will be offering a number of activities, games and crafts sampling our various events from this year so far!

**A FREE event for the whole family**  
**SATURDAY 9th SEPTEMBER**  
 POLLARD PARK, CHILDREN'S PLAY AREA  
**OPEN SESSION FROM 1PM ~ 3PM**  
 Register online at: [www.envirohub.co.nz/event](http://www.envirohub.co.nz/event)  
 or simply turn up on the day!  
 Wet weather? Meet downstairs at the new Blenheim Library!



**Picton Library Story Box Spring Holidays**



Take Home – Books – Puzzles – Tech Kits

All Welcome – Just turn up – It's Free

<p><b>Monday 25 Sept</b></p> <p>Pick up a Story Box Showtime Reading Challenge booklet over the holidays.</p> <p>Drop-in Craft 10am - 4pm</p>	<p><b>Tuesday 26 Sept</b></p> <p>Stories &amp; Craft 2 pm</p>	<p><b>Wednesday 27 Sept</b></p> <p>The Library opens at 9am today!</p> <p>Family Movie Time 2pm</p>	<p><b>Thursday 28 Sept</b></p> <p>Stories &amp; Craft 10.30am</p>	<p><b>Friday 29 Sept</b></p> <p>Drop-in Craft 10am - 4pm</p>
<p><b>Monday 2 Oct</b></p> <p>Drop-in Craft 10am - 4pm</p>	<p><b>Tuesday 3 Oct</b></p> <p>Storytime &amp; Craft 2pm</p>	<p><b>Wednesday 4 Oct</b></p> <p>The Library opens at 9am today!</p> <p>Family Movie Time 2pm</p>	<p><b>Thursday 5 Oct</b></p> <p>Stories &amp; Craft 10.30am</p>	<p><b>Friday 6 Oct</b></p> <p>Drop-in Craft 10am - 4pm</p>



# Picton Heritage & Whaling Museum

## September notes from the Museum

By Mary Cooper

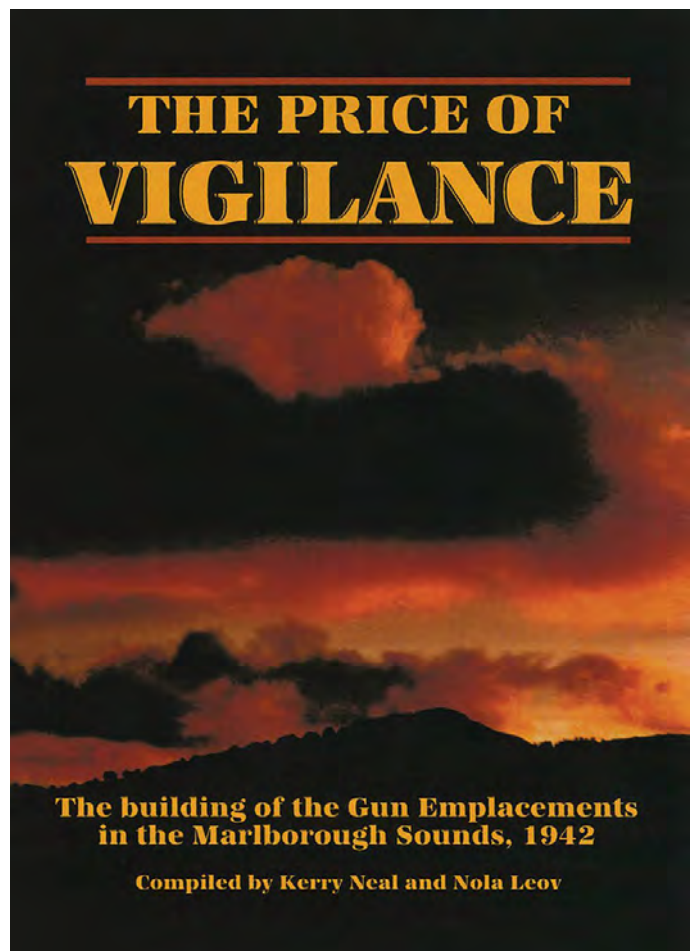
At the AGM of the Picton Historical Society held on Sunday 13th August 2023 The following people were elected unopposed: Beryl Bowers (President), Adelle Kenny (Vice-President), David Craig (Treasurer), Diane St Clair (Secretary), and Val Kenny, Wayne Pearce, Tina Looms and Mary Cooper as Committee Members.

I was looking through an overseas newspaper report on a NZ Team from the 1930s. The team were referred to as "pig islanders". What on earth was meant by that? It appears that a Pig Islander is a New Zealander and that the expression may have come about after Captain Cook released pigs into New Zealand causing an explosion in the number of wild pigs in the country. At Gallipoli the Australians quickly adopted it as a derogatory term for a New Zealander! The term was in use during the first half of the 20th century.



I regularly walk on the Link Pathway as far as what I called the gun emplacements. However, what I was referring to was actually a Lookout Post and Signal Station.

In 1942, when Japan entered World War 2, a series of gun emplacements were erected in the Sounds, the better known are those at Blumine Island and Maud Island as well as the one at Whekenui Bay in Tory Channel. At the museum we have for sale a book on the gun emplacements written by Kerry Neal and Nola Leov (below).



When I researched the Lookout and Signal Station I came across this photo (left) taken in 1945 which is on the Link Pathway website. On the link there are photographs of the condition it was found in by the people working on the track.

<https://www.facebook.com/365588383523911/posts/its-a-surprise-bonus-to-have-rediscovered-the-old-world-war-two-lookout-and-sign/1660127257403344/>

Take the time to walk up – there is a magnificent view down the Sound (image below).



In a recent copy of The Listener I read in Russell Brown's column about a cup and saucer with the name E Baird Friberg, Picton, NZ 1915 on it. My immediate thought was who was she and what was she doing in Picton. Russell Brown did a bit of research on her and found out that she was a well-known water-colour artist who was married to the Rev Nils Friberg.

When I researched the reverend, I found that he was a minister in Kaikoura when he became engaged to Elizabeth Baird Luxton in 1912 and they married later in that year. Rev Nils Friberg was minister at Holy Trinity in Picton between 1914 and 1918. So, mystery solved. Elizabeth Baird Friberg was living in Picton in 1915. I have added the link to the article in The Listener. You can also search her name and see the wonderful paintings she has done.

<https://www.nzherald.co.nz/the-listener/opinion/russell-brown-discovering-art-and-history-in-an-unexpected-place/UBD5NGX23RA63LJSXGLO5KGGUM/>



**Picton Heritage & Whaling Museum**  
**9 London Quay, Picton**  
**Open daily 10am - 3pm**  
[www.pictonmuseum-newzealand.com](http://www.pictonmuseum-newzealand.com)



**Evolution Sails Women's Regatta**  
**September 15th to 17th 2023**  
**Waikawa biggest sailing event**

Racing Saturday and Sunday

*(Good viewing from Karaka Point, Port Underwood Rd)*

<https://waikawaboatingclub.co.nz/womens-regatta/>



# Picton Rail and Sail

## September round up

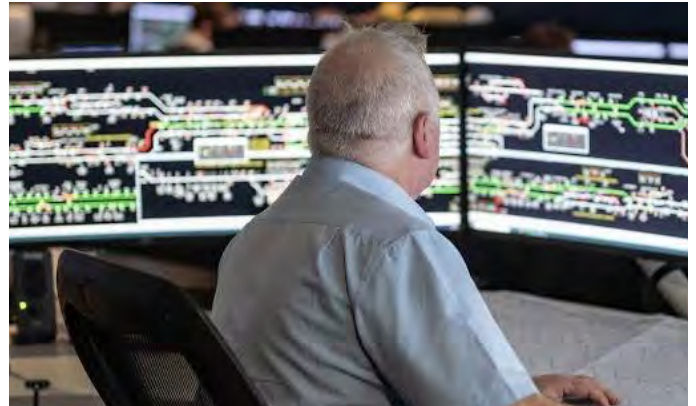
By Brian Morris

In the old days it was the engine driver who controlled the train. The station-master would blow his whistle, wave his green flag, and - on that signal - the engine driver would gently ease the train forward. As a system it worked well for over a century, all over the world. Engine drivers were trained to obey speed limits, interpret track signals (most importantly to observe STOP lights!), and to avoid obstructions on the track – fallen rocks, blown-down branches and sometimes animals.

The famous “cow-catcher” (below) - which we used to see in old movies about train robberies in the Wild West – was actually designed by Charles Babbage in 1830, when he was a passenger on the opening run of the Manchester-Liverpool railroad line. He was concerned to enhance the safety of rail travel and figured the plough-shaped device fixed to the front of locomotives would efficiently remove anything blocking the rails – including cows!



So, with everyone adopting and consistently using the same signals and protocols, trains safely crossed borders, their passengers and freight intact. But now we have centralised control of train movements. A controller (image top right) hundreds of kilometres away manages an electronic system that starts and stops locomotives, operates switching gear that move trains smoothly from one track to



another, hitches and detaches goods wagons from each other; even exercising the capability to pause freight trains in a siding so passenger trains take priority.

Trains can even be moved without a human driver, as happened on the BART (Bay Area Rapid Transit) in San Francisco. When passengers realised that there was no train driver or conductor, they became so apprehensive and reluctant to travel, that management hired an actor dressed in appropriate uniforms to sit up front and do nothing more than reassuringly wave to passengers as they got on board. With restored confidence, passengers once more cheerfully boarded, travelled and exited the trains as before.

Even in this country, our mainline trains are now all controlled electronically from the new \$8billion Control Centre at Wallacetown (Lower Hutt), replacing the 25 year-old system once based in Wellington Central Railway Station. While it's a beautiful old building, it's not the best place to assure safe and secure continuity of service, as that area of the capital is a known risk for events like tsunami, ground liquefaction and earthquake-initiated ground shaking and slips.

Formerly the AgResearch Centre in Wallaceville, the new KiwiRail Control Centre is based in a five-hectare park-style campus with a mix of existing buildings and new commercial buildings. The campus is the Government's



first official regional hub, with the Ministry of Business, Innovation and Employment (MBIE) set to join KiwiRail in the Buddle building later in the year – well away from central Wellington’s well-known hazardous geography!

### Meanwhile back in Picton

Charlotte (right) is finally back on the tracks once more, after months in the beauty parlour (aka the workshop). Her new motor is installed, everything inside and out has been stripped, cleaned, replaced and/or repainted as needed. I swapped out Endeavour’s batteries, installed them in Charlotte, and plan to give Endeavour a good once-over, before giving him a well-earned rest!



**Picton Rail and Sail**  
[railandsailpicton@gmail.com](mailto:railandsailpicton@gmail.com)



# Picton Spring Clean

Registrations open @ 10:45, start at 11am! BBQ at 12:30pm  
**Sunday, 17th September**  
*Meet under Coathanger Bridge (town side)*

Join Envirohub Marlborough & Waihawa Dive Centre for  
**our annual Picton Spring Clean!**

This year we are celebrating *International Coastal Clean-up Day* and *NZ Clean Up Week* and will concentrate on our beautiful local coastline.

**Free BBQ** for all attendees, spot prizes & a chance to enter our raffle draw - see you all there!

Enquiries to Envirohub Marlborough:  
[info@envirohub.co.nz](mailto:info@envirohub.co.nz)  
or check out our website: [www.envirohub.co.nz](http://www.envirohub.co.nz)  
Diving enquiries to: [www.waihawadive.co.nz](http://www.waihawadive.co.nz)

Huge thanks to our sponsors!

DAFAR DIVING  
Port Marlborough  
MARLBOROUGH DISTRICT COUNCIL

# Picton Library Spring Holidays Story Box Showtime

Imagine the best stories being read aloud to you by wonderful storytellers online – well that's Story Box Library!

Explore this awesome new resource at home and at the library these holidays.

Have fun with us on a

## Story Box Reading Challenge



Come in - collect a booklet - get started

# STORYTIMES

## AT THE LIBRARY



**TUESDAY 26 SEPT – 2PM**

**THURSDAY 28 SEPT – 10.30AM**

**TUESDAY 3 OCT – 2PM**

**THURSDAY 5 OCT – 10.30AM**



**ALL WELCOME – JUST TURN UP – IT'S FREE**

MARLBOROUGH DISTRICT LIBRARIES Catalogue & Account

### Search Catalogue

Keyword Author Title

Search



Subscribe to our newsletter



New to the digital library

Find Story Box at home  
with your library card  
[www.marlboroughlibraries.govt.nz](http://www.marlboroughlibraries.govt.nz)



## Family Movie Time

G/PG rated fun.  
Ask us what's playing.

**Wednesday 27 September**

**Wednesday 4 October**

**2 pm**



All welcome - Just turn up - It's free  
We serve popcorn!

# Volunteer in Picton

## Trade Aid Picton

Retail Assistant wanted: We need people to join our team to sell our beautiful Fair Trade products. We also tell our customers who made them and how. Training is provided as needed. Email [picton@tradeaid.org.nz](mailto:picton@tradeaid.org.nz)

[www.tradeaid.org.nz](http://www.tradeaid.org.nz)

## Conservation Kids NZ

Volunteer at our kid's events: We are seeking assistance with our Save Our Species programme. This programme is an out of school, independent programme for families (not just kids!) usually run once a month throughout the year. Email Volunteer Marlborough at [vm@volunteermarlborough.org.nz](mailto:vm@volunteermarlborough.org.nz)

[www.envirohub.co.nz/conservation-kids-nz](http://www.envirohub.co.nz/conservation-kids-nz)

## Kaipupu Wildlife Sanctuary

Pest control, biodiversity surveys, maintenance and staffing the information shop. Our volunteers are guided by our Biodiversity Manager and enthusiastic team leaders. Volunteers have vehicle access to reach Kaipupu. Email Volunteer Marlborough at [vm@volunteermarlborough.org.nz](mailto:vm@volunteermarlborough.org.nz)

[www.kaipupusanctuary.nz](http://www.kaipupusanctuary.nz)

## Picton Heritage & Whaling Museum

We are looking for volunteers to help for one session of three hours per month. Help to present our history. Telephone 03 573 8283 or call in at 9 London Quay.

[www.pictonmuseum-newzealand.com](http://www.pictonmuseum-newzealand.com)

## Picton Dawn Chorus

Trap Line Volunteers needed: If you enjoy long walks in native bush then this role is perfect for you. We rely on a large team of volunteers to check the rat, stoat and possum traps placed out on the town's reserves every weekend. If you can do one weekend day a month or one a week we would love to hear from you. Induction and training is given and you will become part of a very passionate group of volunteers working towards restoring our dawn chorus and making Picton and NZ predator free. Contact: Esther at Picton Dawn Chorus, tel 03 928 4957 ext 1 or email [volunteering@pictondawnchorus.nz](mailto:volunteering@pictondawnchorus.nz)

[www.pictondawnchorus.nz](http://www.pictondawnchorus.nz)

## Marlborough Community Vehicle Trust

Drivers (Picton to Nelson return): Volunteer drivers take people from Picton (or nearby) to Nelson and back for medical appointments. Volunteers will need to be available for most of a day as they will wait in Nelson for the patient. Email Volunteer Marlborough at [vm@volunteermarlborough.org.nz](mailto:vm@volunteermarlborough.org.nz)

[www.marlboroughvehicltrust.org.nz](http://www.marlboroughvehicltrust.org.nz)

## Destination Marlborough

Cruise Ship Ambassador: Marlborough is gearing up for the return of cruise with 54 ships scheduled to berth in Picton so far, including Ovation of the Seas carrying 4,900 passengers on board. To ensure Marlborough continues to be recognised as a great cruise destination, Destination Marlborough coordinates the Cruise Meet and Greet Team. Email Volunteer Marlborough at [vm@volunteermarlborough.org.nz](mailto:vm@volunteermarlborough.org.nz)

[www.marlboroughnz.com](http://www.marlboroughnz.com)

# Enrol. Vote. Be heard.

[vote.nz](https://vote.nz)



## Time to make sure you are enrolled

The general election is being held in October this year and the Electoral Commission wants every eligible New Zealander to enrol and vote.

Voting starts on Monday 2 October and finishes at 7.00 pm on election day, Saturday 14 October.

You need to be enrolled to vote provided you are 18 years or older, are a New Zealand citizen or permanent resident and have lived in New Zealand continuously for 12 months or more at some time in your life.

## New Living in Marlborough brochure

Moving into a new home is an exciting time.

Council has produced a new brochure aimed at people who have purchased property in the region so they can make the most of living in Marlborough. It replaces an Information for Residents brochure sent with new ratepayer letters.

The new Living in Marlborough brochure

If you've moved house or changed your name, you need to update your enrolment details.

It's easy to enrol or update your details at [vote.nz](https://vote.nz) by calling 0800 36 76 56 or by texting your name and address to 3676.

If you haven't enrolled, you can enrol and vote at any voting place including on election day.

If you enrol by Sunday 10 September, you will receive information about the election in the mail as well as an EasyVote card which makes voting easier.

contains information on Council services and provides a guide for new homeowners on where to go to for assistance, including Council's Customer Services Team who are available on (03) 520 7400 or [mdc@marlborough.govt.nz](mailto:mdc@marlborough.govt.nz).

Information about Council services can also be found on Council's website [www.marlborough.govt.nz](http://www.marlborough.govt.nz), Facebook page and the Antenno app.

# One-off funding opportunity for arts festivals

A one-off funding opportunity for festivals featuring the arts is now available in Marlborough and Council is inviting applications.

To apply, your festival must have run at least once in the previous five years. The funding is through Creative NZ and administered by Council.

The festival criteria for the purpose of this fund

cover an integrated programme of events and activities featuring one or more art forms from any cultural tradition, which take place within a defined area or region over a designated period.

To make an application or for further information please contact Nicola Neilson at [nicola.neilson@marlborough.govt.nz](mailto:nicola.neilson@marlborough.govt.nz) by 11 September.

## Commercial Events Fund - open now

Round 1 of Council's 2023/2024 Commercial Events Fund is now open for applications.

The fund was established to help create economic benefit to Marlborough by attracting new events and helping build on existing ones. A Commercial Events Fund sub-committee considers the applications; there is up to \$100,000 available for allocation during 2023/2024.

To be eligible, commercial events must be held within the Marlborough District Council boundaries. Community events, conferences, conventions, trade shows and exhibitions are not eligible. Funding is granted on an annual basis but it does not mean that all funds must be distributed each year. Past applicants who

have been unsuccessful may re-apply.

Key dates:

Applications close: 5.00 pm Monday 11 September 2023

Funding decision by: 5.00 pm Friday 6 October 2023

Applications must be completed via Council's website

[Go to the commercial events fund page](#)

Enquiries to Regional Events Advisor, Samantha Young; Ph: 03 520 7400 or email [events@marlborough.govt.nz](mailto:events@marlborough.govt.nz)

## *A cuppa with your councillors*

Council's Sounds-based councillors are available for a drop-in chat each month.

Come along to the Waitohi Whare Mātauranga/ Picton Library and Service Centre each month, from 10.00 am until midday (dates below).

The councillors can provide advice and information and help with Council-related issues.

Councillors Barbara Faulls, Raylene Innes and Ben Minehan are Sounds Ward councillors. Allanah Burgess is the Māori Ward councillor for Marlborough and based in Picton.



**Councillors: Barbara Faulls, Allanah Burgess, Raylene Innes and Ben Minehan.**

**Where: Picton Library and Service Centre**  
**When: 10.00 am to midday on 20 Sep; 26 Oct and 23 Nov 2023**

# Picton Weekly Events

## MONDAY

Picton Walking Group: 9.20am, RSA car park  
Te Reo Māori: 10am-12pm, Lib  
Tumble Tots: 10am-11am, Pav  
MPT Moana Moui Ola Mamas Tai Chi: 11:30am-12:30pm, Pav  
Writers of Picton: 1.30pm, 1st Monday, Lib  
Senior Citizens: 1pm, RSA  
Scrabble: 1pm-4pm, Lib  
Girl Guides: 6pm-8pm, SJS  
Picton Bridge Club (Beginners): 7pm, Pav  
Arapawa BoxFit Class: 6.30p-7.30pm, Scout Hall  
Sounds Orchestral Ukelele Players (S.O.U.P.): 6.30pm-8.30pm, WBC

## TUESDAY

Pilates: 8am-9am, Pav  
Songbird Yoga: 9.30am-10.30am, Pav  
Table Tennis Club: 10am-Noon, PLT  
Line Dancing: 10am, Anglican Church Hall  
Picton Newcomers Network: 10am-11.00am, 1st Tues, Seabreeze Café  
Ladies 18 Holes: 10am-2pm, PGC  
Spinners and Knitters: 10.30am-2pm, Lib  
Indoor Bowls: 12.45pm-3pm, Pav  
Steady As You Go: 1.30pm-2.30pm, Union Parish Centre  
Picton Writers Club: 1.30pm 1st Tues of month, Lib  
Picton Sea Swim: 6.00pm, Picton or Waikawa (seasonal)  
Taekwon-do: 6.00pm-7.30pm, Picton School  
Arapawa Boxing: 6.30pm-7.30pm, Scout Hall  
Songbird Yoga: 6.30pm-7.30pm, Pav

## WEDNESDAY

St. Joseph's Catholic Church: Mass 9am  
Picton Men's Shed: 9am-4pm, Men's Shed  
Mixed 9 Holes: 9.30am-12pm, PGC  
Tai Chi with Manu: 10am-11am, Pav  
The Waitohi Social Club: 10am, 3rd Weds, Lib  
Book Chat: 10.30am-11.30am, 2nd Weds, Lib  
Picton Poets: 10.30am-12pm, 4th Weds, Lib  
Justice of the Peace Drop-in Clinic: 11am-1pm, Lib  
Cribbage: 1pm-4pm, Picton RSA  
Mahjong: 1.00pm, MCCR  
After School Fun: 3.30pm-4.30pm, Lib  
Drama Playshops (Teens): 3.45pm-4.45pm, Pav  
Picton Quilters: 6.30pm, 2nd Weds, Pav  
Waikawa Ratepayers Assoc: 5.30pm, 2nd Weds, WBC  
Arapawa BoxFit Class: 5.30pm-6.15pm, Picton Scout Hall  
Picton Trails Club Rides: 6pm, Pav carpark  
Picton Badminton Club: 6.30pm-8.30pm, QCC Gym  
Picton Lions (Team): 6.30pm, 1st Weds, The Crow  
Arapawa BoxFit Class: 6.30pm-7.30pm, Scout Hall  
A Cappella Belles: 7pm, Holy Trinity Church  
Quiz Night: 7pm, Picton RSA  
Picton Lions (Business): 7.30pm, 3rd Weds, Pav  
Sounds Accordionaires: 7.30pm-8.30pm, 62 Moana View Rd

## THURSDAY

Picton Playcentre: 9.30am-Noon, 5 Waitohi Place  
Table Tennis Club: 10am-12pm, Pav  
The Company Cafe: 10.30am-11.30am term time, Lib  
Mens18 Holes: 11.00am-3pm, PGC  
Euchre: 12.30pm-3pm, Lib  
Alzhiemers Marlborough Afternoon Tea: 1pm-2pm, 4th Thurs, Lib  
Pilates: 5.15pm-6.15pm, Pav  
Yurt Yoga at Mount Pleasant: 6pm-7.30pm, Yoga Yurt  
Taekwon-do: 6pm-7.30pm, QCCG  
Bookworm Bookclub: 6.30pm, 1st Thurs, Lib  
Bridge Club: 7pm-10pm, Pav  
Bingo: 7pm, WBC

## FRIDAY

Yoga with Picton Yoga Collective: 9.15am-10.30am, Pav  
Mixed Stableford 9 Holes: 9.30am-12pm, PGC  
Picton Amateur Art Group: 10am-2pm, Lib  
Tea @ Ten: 10am, 2nd & 4th Fri, MCCR  
Under 5's Stories & Craft: 10am-11am, Lib  
Welcome In: 11am, 1st Fri, Scoozis Café  
Picton Newcomers Network (Sundowners): 5pm-6pm, Cafe Cortado  
Picton Wine Club: 6.15pm, 1st Fri, PLT

## SATURDAY

Junior Football, Rugby & Cricket: 9am onwards, Pav  
Men's Shed: 9am-12pm, Men's Shed  
Men's Shed Garage Sale: 9am-12pm, last Sat  
Mixed 18 Holes: 11.30am-3.00pm, PGC  
Picton Bowling Club: 12.45pm, 25 Kent St  
Schnauzer Schmooze: 3pm 1st Sat, Picton Dog Park

## SUNDAY

Family worship & communion: 10am, Anglican Church  
Mass: 9am, St. Joseph's Catholic Church  
Sunday Service: 10am, Union Parish of Picton  
Picton Sunday Service: 10am, Baptist Church (zoom available)  
Buddhism for Daily Life (Marlborough Group): 10am, 1st Sun, 8 Moana View Rd  
Rail and Sail: 11am-3pm, Picton Foreshore  
Christian Life Centre Service: 11.30am, 40 Broadway  
Schnauzer Schmooze: 3pm, 3rd Sun, Picton Dog Park

**Pav:** Port Marlborough Pavilion

**PLT:** Picton Little Theatre

**Lib:** Picton Library

**WBC:** Waikawa Boating Club

**PGC:** Picton Golf Club

**QCCG:** Queen Charlotte College Gym

**MCCR:** Marina Cove Club Room

**SJS:** St. Joseph's School

If you would like to add an event to this listing or make an amendment please call Nicci Neilson on 027 262 9024 or email nicola.neilson@marlborough.govt.nz